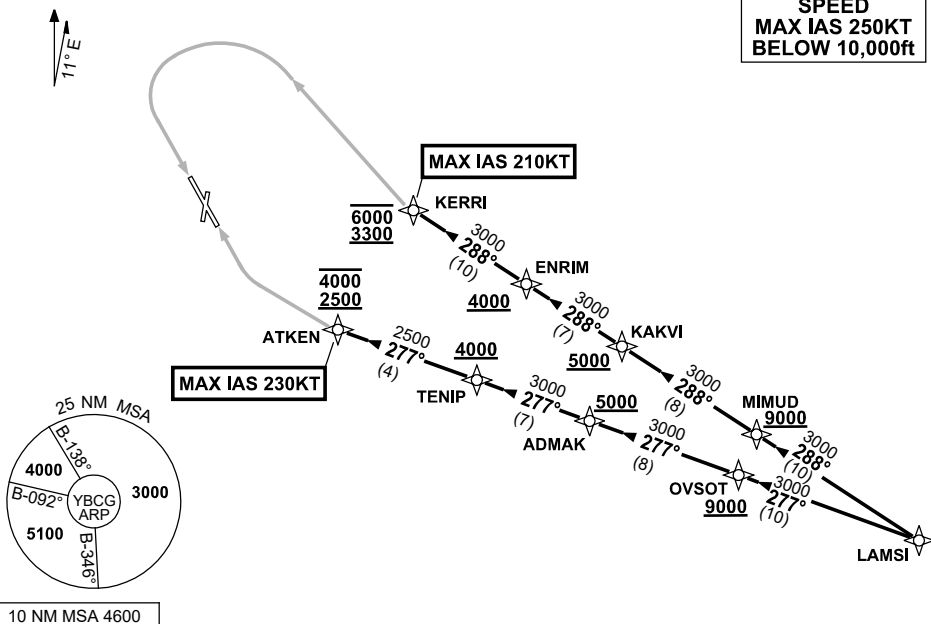


**STANDARD ARRIVAL ROUTE (STAR)  
LAMSI THREE YANKEE ARRIVAL (RNAV)  
GOLD COAST, QLD (YBCG)**

**12 JUN 2025**

ATIS <b>112.3 134.5</b> (H24) (TWR HR)	APP <b>BN 123.5</b>	TWR <b>118.7</b> (AFRU+PAL)	SMC <b>121.8</b>	AWIS (AH) <b>134.5</b>	Bearings are Magnetic Elevations in FEET AMSL
--	------------------------	-----------------------------------	---------------------	---------------------------	--

NOT TO SCALE



**ARRIVAL: LAMSI THREE YANKEE**

**RUNWAY 14:**

- From LAMSI track 288° to MIMUD.  
**Cross** MIMUD AT or ABV 9000ft.
- Track 288° to KAKVI.  
**Cross** KAKVI AT or ABV 5000ft.
- Track 288° to ENRIM.  
**Cross** ENRIM AT or ABV 4000ft.
- Track 288° to KERRI.  
**Cross** KERRI BTN 3300ft and 6000ft.  
MAX IAS 210KT from KERRI
- At KERRI track via RNP Y RWY 14 (AR)

**RUNWAY 32:**

- From LAMSI track 277° to OVSOT.  
**Cross** OVSOT AT or ABV 9000ft.
- Track 277° to ADMAK.  
**Cross** ADMAK AT or ABV 5000ft.
- Track 277° to TENIP.  
**Cross** TENIP AT or ABV 4000ft.
- Track 277° to ATKEN.  
**Cross** ATKEN BTN 2500ft and 4000ft.  
MAX IAS 230KT from ATKEN
- At ATKEN track via RNP Y RWY 32 (AR)

**COMMUNICATIONS FAILURE PROCEDURE  
IF ABLE CTC GOLD COAST ATC ON TEL : 07 55995990**

- Squawk 7600, comply with vertical navigation requirements, but not below MSA.
- Track via the latest STAR clearance to the nominated runway, then fly the most suitable approach in accordance with ERSA EMERG Section 1.5.

Changes: Editorial.

BCGSR04-183