

FOR CASA APPROVED STANDARD INSTRUMENT DEPARTURE (SID) OPERATORS ONLY

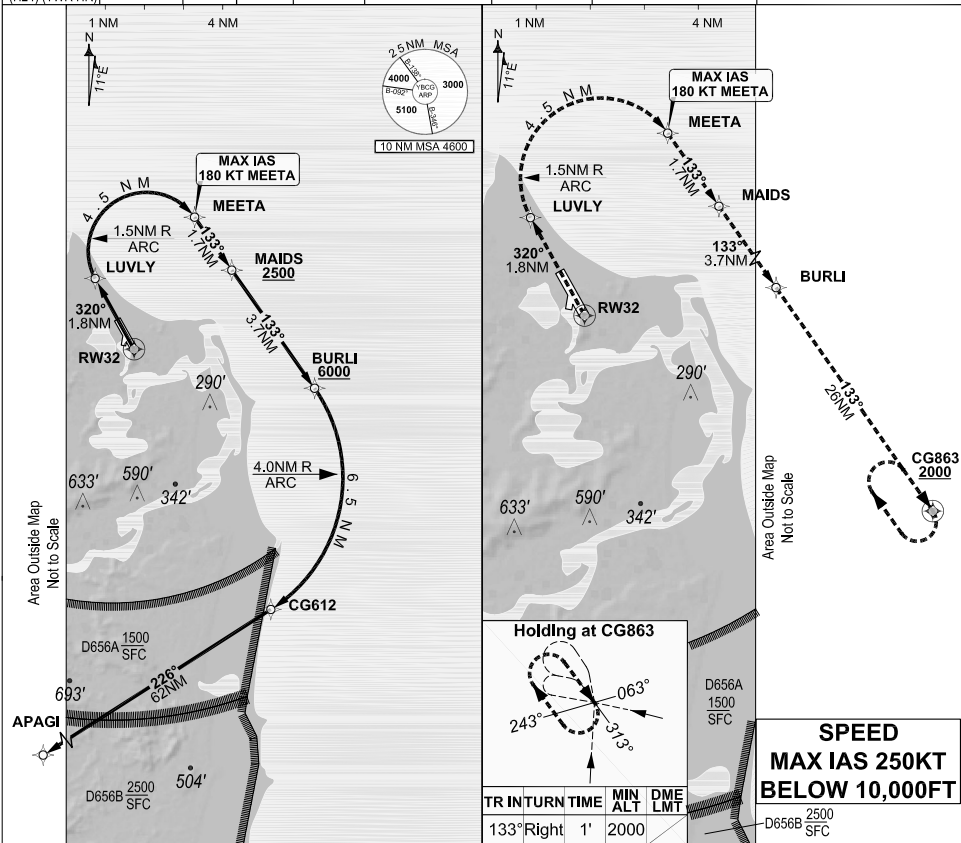
RW32 RNAV (RNP 0.3) BURLI FIVE

GOLD COAST, QLD (YBCG)

2 DEC 2021

USE QNH

ATIS 112.3 134.5 (H24) (TWR HR)	APP BN 123.5	TWR 118.7	SMC 121.8	ACD 128.75	FIA (AH) BN CEN 119.5	AWIS (AH) 134.5	CTAF+AFRU (AH) AFRU+PAL (AH) 118.7	Bearings are Magnetic Elevations in FEET AMSL
---------------------------------------	-----------------	--------------	--------------	---------------	--------------------------	--------------------	--	--



RW 32 BURLI DEPARTURE

GRAD 9.3% (AE) to BURLI at 6000 FT.

RF Required

RWY 32

- Track 320° to LUVLY.
- Turn RIGHT via the RNAV (RNP) track to MEETA.
- **MAX IAS** 180KT until MEETA
- Track 133° to MAIDS.
- **CROSS** MAIDS AT or ABV 2500FT.
- Track 133° to BURLI.
- **CROSS** BURLI AT or ABV 6000FT.
- Turn RIGHT via the RNAV (RNP) track to CG612.
- Track 226° to APAGI, thence as cleared.

RNAV (RNP 0.3) ENGINE OUT DEPARTURE

RWY 32

ENGINE FAILURE PRIOR TO BURLI

- Climb to 2000FT.
- **MAX IAS** 180KT until MEETA
- Fly the RNAV (RNP) ENGINE OUT DEPARTURE track to CG863.
- Hold at CG863.
- **MAX** holding IAS 230KT.

ENGINE FAILURE AFTER BURLI

- Continue via the RNAV (RNP) BURLI track to APAGI.

Changes: From SUP H55/21.

BCGDP03-169

DO NOT USE FOR NAVIGATION

Prepared by GE Aviation

