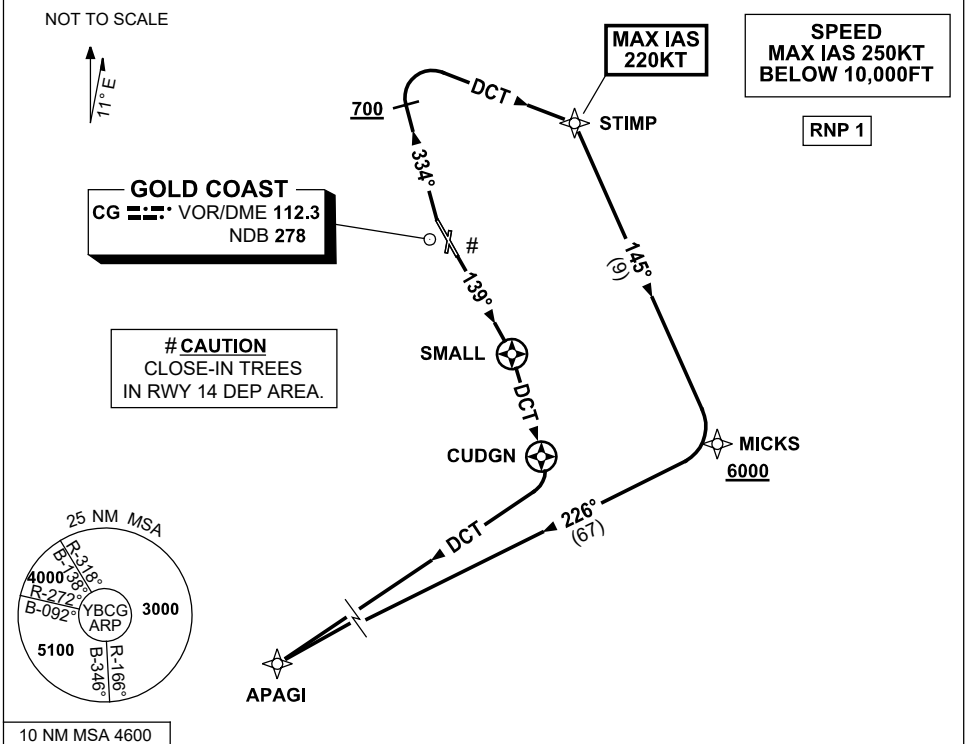


STANDARD INSTRUMENT DEPARTURE (SID)  
RWY 14/32 SOUTH (JET) (RNAV)  
**GOLD COAST, QLD (YBCG)**

13 JUN 2024

ATIS 112.3 (H24) 134.5 (TWR HR)	APP BN 123.5	TWR 118.7	SMC 121.8	ACD 128.75	FIA (AH) BN CEN 119.5	AWIS (AH) 134.5	CTAF+AFRU (AH) AFRU+PAL (AH) 118.7	Bearings are Magnetic Elevations in FEET AMSL
------------------------------------	-----------------	--------------	--------------	---------------	--------------------------	--------------------	--	--



**APAGI FIVE DEPARTURE**

**RWY 14 #**

- GRAD 4.8% to 1500ft then 3.3% (6.7% to 7000ft, then 6% to 7500ft)
- Track 139° to SMALL
- Turn RIGHT, track DCT to CUDGN
- Turn RIGHT, track DCT to APAGI, then as cleared

**RWY 32**

**MAX IAS 220KT UNTIL STIMP**  
GRAD 5.3% to 700ft then 3.3% (6.3% to 2000ft)

- Not before DER turn RIGHT track 334°
- AT or ABV 700ft turn RIGHT track DCT to STIMP
- Turn RIGHT, track 145° to MICKS
- **Cross** MICKS AT or ABV 6000ft
- Turn RIGHT, track 226° to APAGI, then as cleared