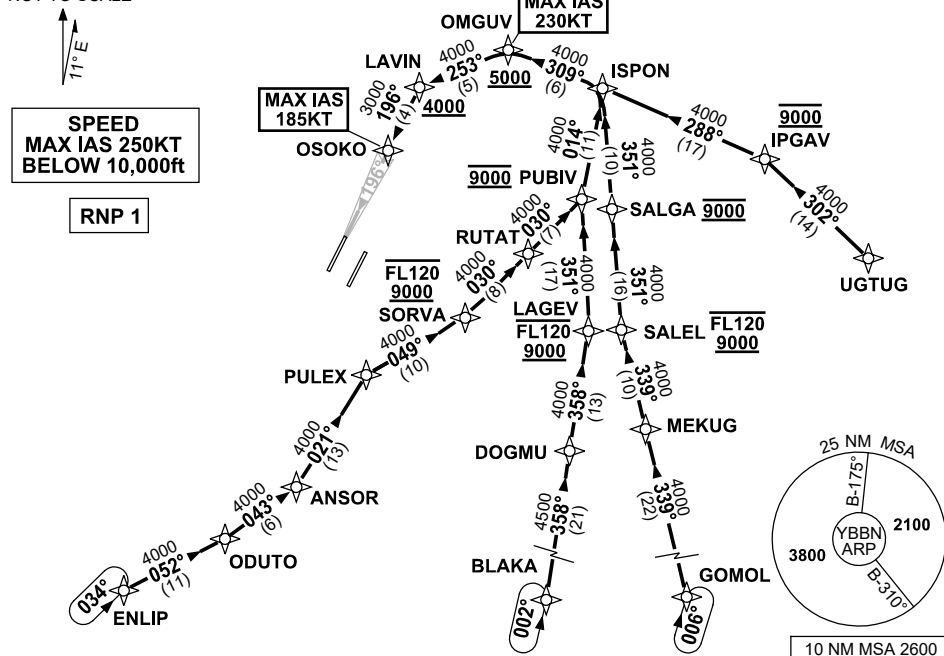


20 MAR 2025

ATIS 113.2 125.5	NORTH 124.7	APP SOUTH 125.6	FINALS 119.25	TWR 01R/19L 120.5 01L/19R 118.0	NORTH 124.05	SMC DOM 121.7	SOUTH 122.25	Bearings are Magnetic Elevations in FEET AMSL
---------------------	----------------	--------------------	------------------	---------------------------------------	-----------------	------------------	-----------------	--

NOT TO SCALE



TRANSITIONS:

ENLIP

- From ENLIP, track 052° to ODUTO
- Turn LEFT, track 043° to ANSOR
- Turn LEFT, track 021° to PULEX
- Turn RIGHT, track 049° to SORVA
- **Cross** SORVA BTN 9000ft and FL120
- Turn LEFT, track 030° to RUTAT
- Track 030° to PUBIV
- **Cross** PUBIV AT 9000ft
- Turn LEFT, track 014° to ISPON

UGTUG

- From UGTUG, track 302° to IPGAV
Cross IPGAV AT 9000ft
- Turn LEFT, track 288° to ISPON

ARRIVAL:

ISPON TWO

RWY 19R

- From ISPON, track 309° to OMGUV
Cross OMGUV AT or ABV 5000ft
MAX IAS 230KT AT OMGUV

BLAKA

- From BLAKA, track 358° to DOGMU
- Track 358° to LAGEV
Cross LAGEV BTN 9000ft and FL120
- Turn LEFT, track 351° to PUBIV
Cross PUBIV AT 9000ft
- Turn RIGHT, track 014° to ISPON

GOMOL

- From GOMOL, track 339° to MEKUG
- Track 339° to SALEL
Cross SALEL BTN 9000ft and FL120
- Turn RIGHT, track 351° to SALGA
Cross SALGA AT 9000ft
- Track 351° to ISPON

- Turn LEFT, track 253° to LAVIN
Cross LAVIN AT or ABV 4000ft
- Turn LEFT, track 196° to OSOKO
for ILS, RNP Z or LOC RWY 19R
approach.
MAX IAS 185KT AT OSOKO

COMMUNICATIONS FAILURE: PROCEDURE IN IMC

IF ABLE CTC BN ATC ON TEL: (07) 3866-3694

- Squawk 7600, comply with vertical navigation requirements, but not below MSA.
- Track via the latest STAR clearance to the nominated runway, then fly the most suitable approach in accordance with ERSB EMERG Section 1.5.

Changes: MSA.

BBNSR55-182