

**STANDARD INSTRUMENT ARRIVAL (STAR)
GOMOL FOUR VICTOR ARRIVAL (RNAV) RWY 01R/19L
BRISBANE, QLD (YBBN)**

20 MAR 2025

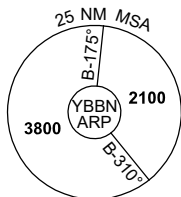
ATIS 113.2 125.5	APP NORTH 124.7 SOUTH 125.6 FINALS 119.25	TWR 01R/19L 120.5 01L/19R 118.0	SMC DOM 121.7 SOUTH 122.25	Bearings are Magnetic Elevations in FEET AMSL
---------------------	--	---------------------------------------	----------------------------------	--

NOT TO SCALE

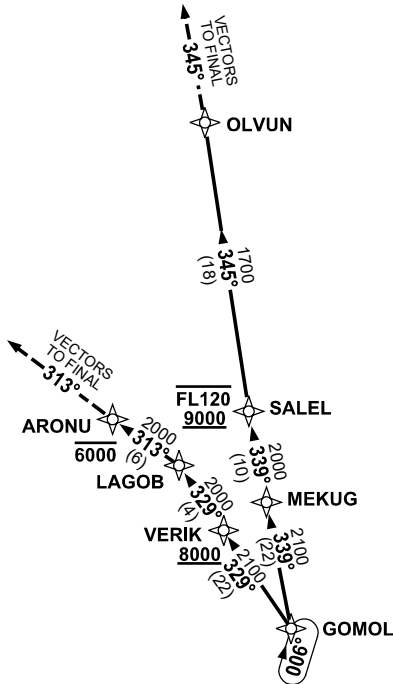


**SPEED
MAX IAS 250KT
BELOW 10,000ft**

RNP 1



10 NM MSA 2600



ARRIVAL: GOMOL FOUR VICTOR

RWY 01R:

- From GOMOL, track 329° to VERIK
Cross VERIK AT or ABV 8000ft
- Track 329° to LAGOB
- Turn LEFT, track 313° to ARONU
Cross ARONU AT or BLW 6000ft
- Track 313°, EXPECT radar vectors to final

RWY 19L:

- From GOMOL, track 339° to MEKUG
- Track 339° to SALEL
Cross SALEL BTN 9000ft and FL120
- Turn RIGHT, track 345° to OLTVUN
- Track 345°, EXPECT radar vectors to final

**COMMUNICATIONS FAILURE: PROCEDURE IN IMC
IF ABLE CTC BN ATC ON TEL: (07) 3866-3694**

- Squawk 7600, comply with vertical navigation requirements, but not below MSA.
- Track via the latest STAR clearance to the nominated runway, then fly the most suitable approach in accordance with ERSA EMERG Section 1.5.

Changes: FROM SUP H152/24.

BBNSR50-182