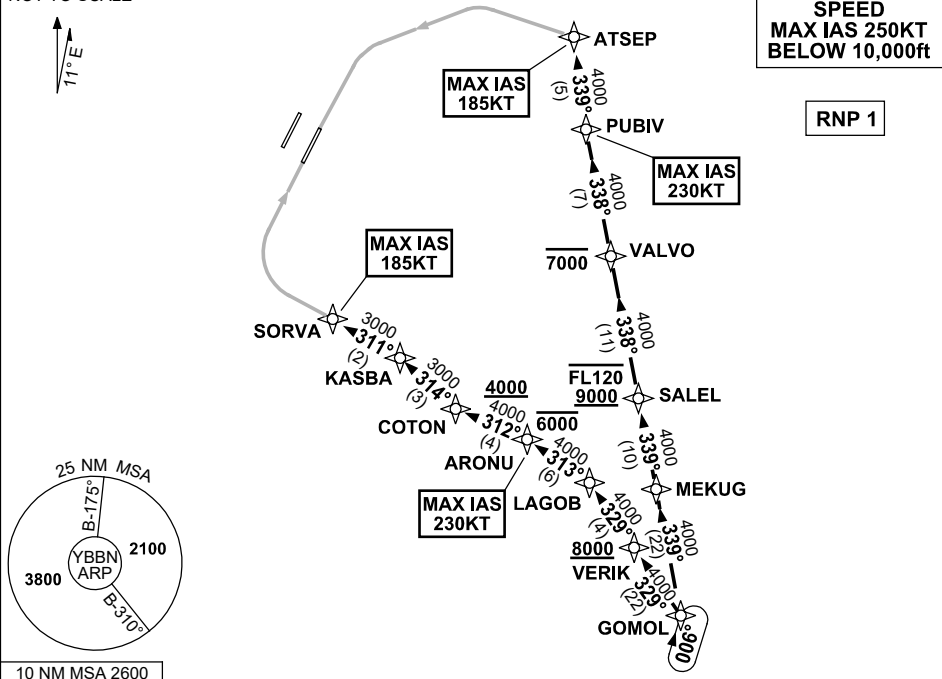


**STANDARD INSTRUMENT ARRIVAL (STAR)  
GOMOL FOUR X-RAY ARRIVAL (RNAV) RWY 01R/19L  
BRISBANE, QLD (YBBN)**

**20 MAR 2025**

ATIS 113.2 125.5	APP NORTH 124.7 SOUTH 125.6 FINALS 119.25	TWR 01R/19L 120.5 01L/19R 118.0	SMC DOM 121.7 SOUTH 122.25	Bearings are Magnetic Elevations in FEET AMSL
---------------------	--	---------------------------------------	----------------------------------	--

NOT TO SCALE



**ARRIVAL: GOMOL FOUR X-RAY**

**RWY 01R:**

- From GOMOL, track 329° to VERIK  
**Cross** VERIK AT or ABV 8000ft
- Track 329° to LAGOB
- Turn LEFT, track 313° to ARONU  
**Cross** ARONU AT or BLW 6000ft  
MAX IAS 230KT AT ARONU
- Turn LEFT, track 312° to COTON  
**Cross** COTON AT or ABV 4000ft
- Turn RIGHT, track 314° to KASBA
- Turn LEFT, track 311° to SORVA for the  
RNP X or RNP S RWY 01R (AR) approach  
MAX IAS 185KT AT SORVA

**RWY 19L:**

- From GOMOL, track 339° to MEKUG.
- Track 339° to SALEL  
**Cross** SALEL BTN 9000ft and FL120
- Track 338° to VALVO  
**Cross** VALVO AT or BLW 7000ft
- Track 338° to PUBIV  
MAX IAS 230KT AT PUBIV
- Turn RIGHT, track 339° to ATSEP for  
RNP X or RNP S RWY 19L (AR) approach  
MAX IAS 185KT AT ATSEP

**COMMUNICATIONS FAILURE: PROCEDURE IN IMC  
IF ABLE CTC BN ATC ON TEL: (07) 3866-3694**

- Squawk 7600, comply with vertical navigation requirements, but not below MSA.
- Track via the latest STAR clearance to the nominated runway, then fly the most suitable approach in accordance with ERSA EMERG Section 1.5.

Changes: FROM SUP H152/24.

BBNSR49-182