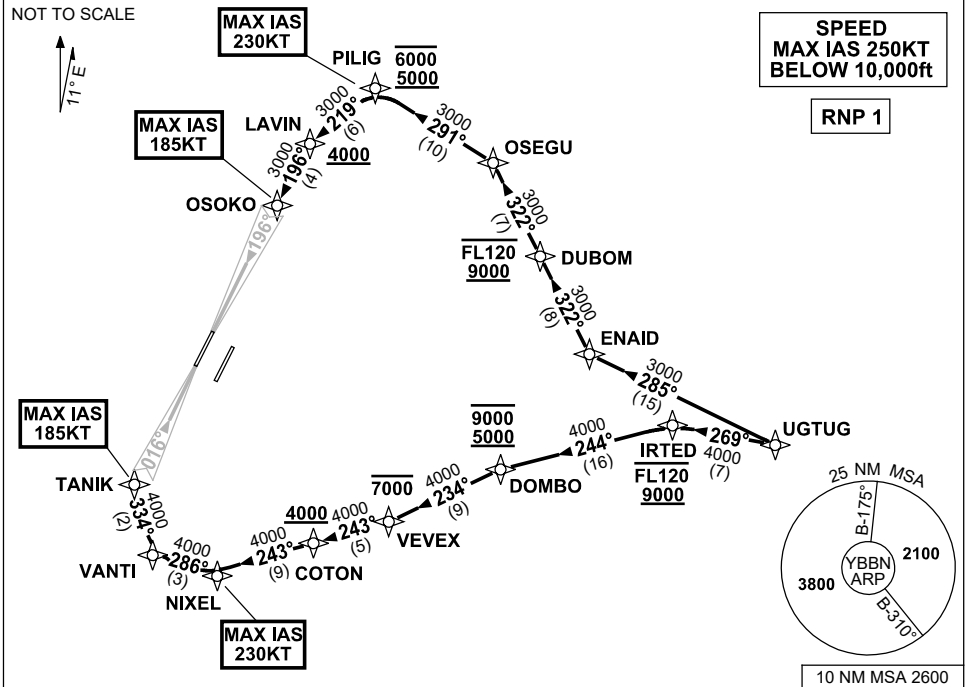


**STANDARD INSTRUMENT ARRIVAL (STAR)
UGTUG TWO ALPHA ARRIVAL (RNAV) RWY 01L/19R
BRISBANE, QLD (YBBN)**

20 MAR 2025

ATIS 113.2 125.5	APP NORTH 124.7 SOUTH 125.6 FINALS 119.25	TWR 01L/19R 118.0 01R/19L 120.5	SMC NORTH 124.05 DOM 121.7 SOUTH 122.25	Bearings are Magnetic Elevations in FEET AMSL
---------------------	--	---------------------------------------	--	--



ARRIVAL: UGTUG TWO ALPHA

RWY 01L:

- From UGTUG, track 269° to IRTED
Cross IRTED BTN 9000ft and FL120
- Turn LEFT, track 244° to DOMBO
Cross DOMBO BTN 5000ft and 9000ft
- Turn LEFT, track 234° to VEVEV
Cross VEVEV AT or BLW 7000ft
- Turn RIGHT, track 243° to COTON
Cross COTON AT or ABV 4000ft
- Track 243° to NIXEL
MAX IAS 230KT AT NIXEL
- Turn RIGHT, track 286° to VANTI
- Turn RIGHT, track 334° to TANIK for ILS,
RNP Z or LOC RWY 01L approach
MAX IAS 185KT AT TANIK

RWY 19R:

- From UGTUG, track 285° to ENAID
- Turn RIGHT, track 322° to DUBOM
Cross DUBOM BTN 9000ft and FL120
- Track 322° to OSEGU
- Turn LEFT, track 291° to PILIG
Cross PILIG BTN 5000ft and 6000ft
MAX IAS 230KT AT PILIG
- Turn LEFT, track 219° to LAVIN
Cross LAVIN AT or ABV 4000ft
- Turn LEFT, track 196° to OSOKO for ILS,
RNP Z or LOC RWY 19R approach
MAX IAS 185KT AT OSOKO

**COMMUNICATIONS FAILURE: PROCEDURE IN IMC
IF ABLE CTC BN ATC ON TEL: (07) 3866-3694**

- Squawk 7600, comply with vertical navigation requirements, but not below MSA.
- Track via the latest STAR clearance to the nominated runway, then fly the most suitable approach in accordance with ERSA EMERG Section 1.5.

Changes: MSA.

BBNSR44-182