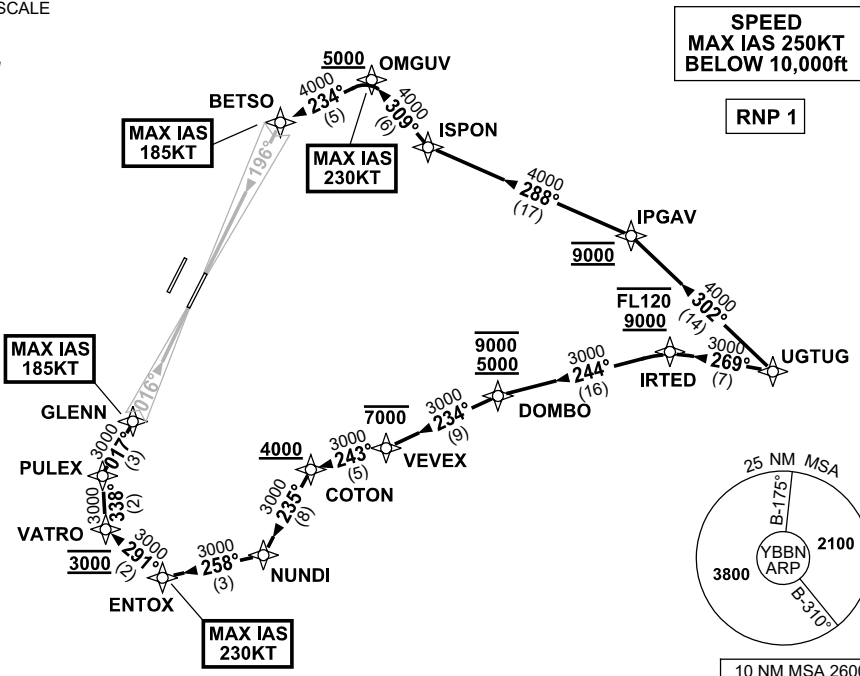


STANDARD INSTRUMENT ARRIVAL (STAR) UGTUG TWO ALPHA ARRIVAL (RNAV) RWY 01R/19L BRISBANE, QLD (YBBN)

20 MAR 2025

ATIS 113.2 125.5	APP NORTH 124.7 SOUTH 125.6 FINALS 119.25	TWR 01R/19L 120.5 01L/19R 118.0	SMC DOM 121.7 SOUTH 122.25	Bearings are Magnetic Elevations in FEET AMSL
---------------------	--	---------------------------------------	-------------------------------	--

NOT TO SCALE



ARRIVAL: UGTUG TWO ALPHA RWY 01R:

- From UGTUG, track 269° to IRTED
Cross IRTED BTN 9000ft and FL120
- Turn LEFT, track 244° to DOMBO
Cross DOMBO BTN 5000ft and 9000ft
- Turn LEFT, track 234° to VEVEV
Cross VEVEV AT or BLW 7000ft
- Turn RIGHT, track 243° to COTON
Cross COTON AT or ABV 4000ft
- Turn LEFT, track 235° to NUNDI
- Turn RIGHT, track 258° to ENTUX
MAX IAS 230KT AT ENTUX
- Turn RIGHT, track 291° to VATRO
Cross VATRO AT 3000ft
- Turn RIGHT, track 338° to PULEX
- Turn RIGHT, track 017° to GLENN for ILS,
RNP Z, LOC or RNP T RWY 01R approach
MAX IAS 185KT AT GLENN

RWY 19L:

- From UGTUG, track 302° to IPGAV
Cross IPGAV AT 9000ft
- Turn LEFT, track 288° to ISPON
- Turn RIGHT, track 309° to OMGUV
Cross OMGUV AT or ABV 5000ft
MAX IAS 230KT AT OMGUV
- Turn LEFT, track 234° to BETSO for ILS,
RNP Z, LOC or RNP T RWY 19L approach
MAX IAS 185KT AT BETSO

COMMUNICATIONS FAILURE: PROCEDURE IN IMC IF ABLE CTC BN ATC ON TEL: (07) 3866-3694

- Squawk 7600, comply with vertical navigation requirements, but not below MSA.
- Track via the latest STAR clearance to the nominated runway, then fly the most suitable approach in accordance with ERSA EMERG Section 1.5.

Changes: MSA.

BBNSR43-182