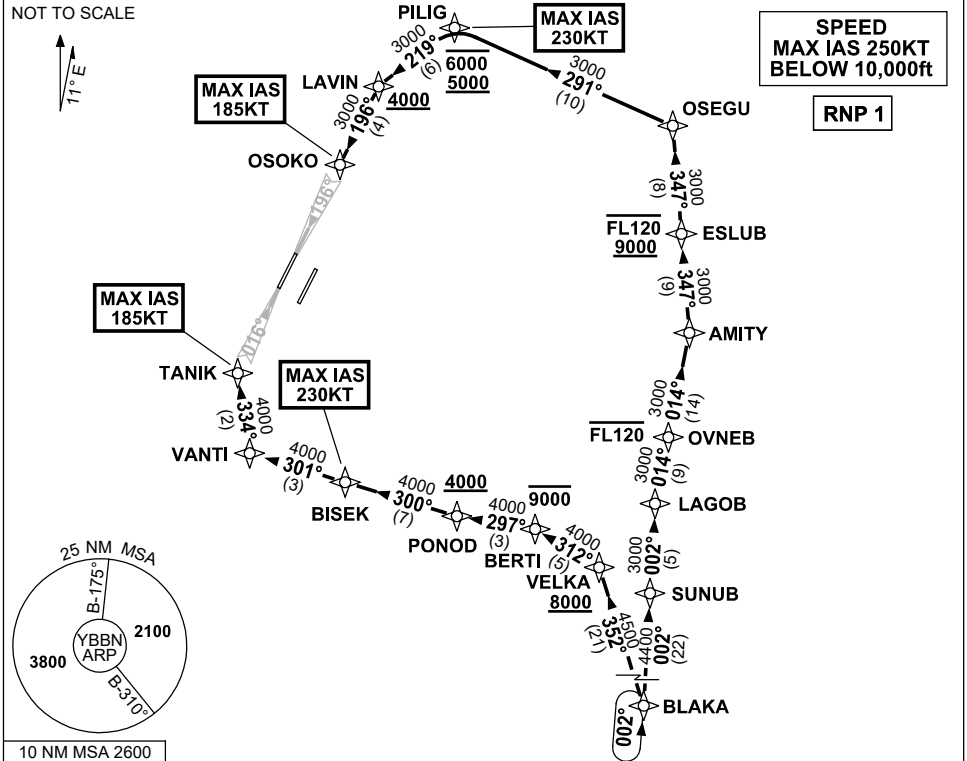


STANDARD INSTRUMENT ARRIVAL (STAR) BLAKA SIX ALPHA ARRIVAL (RNAV) RWY 01L/19R BRISBANE, QLD (YBBN)

20 MAR 2025

ATIS 113.2 125.5	APP NORTH 124.7 SOUTH 125.6 FINALS 119.25	TWR 01L/19R 118.0 01R/19L 120.5	SMC NORTH 124.05 DOM 121.7 SOUTH 122.25	Bearings are Magnetic Elevations in FEET AMSL
---------------------	--	---------------------------------------	--	--



ARRIVAL: BLAKA SIX ALPHA

RWY 01L:

- From BLAKA, track 352° to VELKA
Cross VELKA AT or ABV 8000ft
- Turn LEFT, track 312° to BERTI
Cross BERTI AT or BLW 9000ft
- Turn LEFT, track 297° to PONOD
Cross PONOD AT or ABV 4000ft
- Turn RIGHT, track 300° to BISEK
MAX IAS 230KT AT BISEK
- Track 301° to VANTI
- Turn RIGHT, track 334° to TANIK for ILS,
RNP Z or LOC RWY 01L approach
MAX IAS 185KT AT TANIK

RWY 19R:

- From BLAKA, track 002° to SUNUB
- Track 002° to LAGOB
- Turn RIGHT, track 014° to OVNEB
Cross OVNEB AT or BLW FL120
- Track 014° to AMITY
- Turn LEFT, track 347° to ESLUB
Cross ESLUB BTN 9000ft and FL120
- Turn LEFT, track 347° to OSEGU
- Turn LEFT, track 291° to PILIG
Cross PILIG BTN 5000ft and 6000ft
MAX IAS 230KT AT PILIG
- Turn LEFT, track 219° to LAVIN
Cross LAVIN AT or ABV 4000ft
- Turn LEFT, track 196° to OSOKO for ILS,
RNP Z or LOC RWY 19R approach
MAX IAS 185KT AT OSOKO

COMMUNICATIONS FAILURE: PROCEDURE IN IMC

IF ABLE CTC BN ATC ON TEL: (07) 3866-3694

- Squawk 7600, comply with vertical navigation requirements, but not below MSA.
- Track via the latest STAR clearance to the nominated runway, then fly the most suitable approach in accordance with ERSA EMERG Section 1.5.

Changes: FROM SUP H152/24.

BBNSR38-182