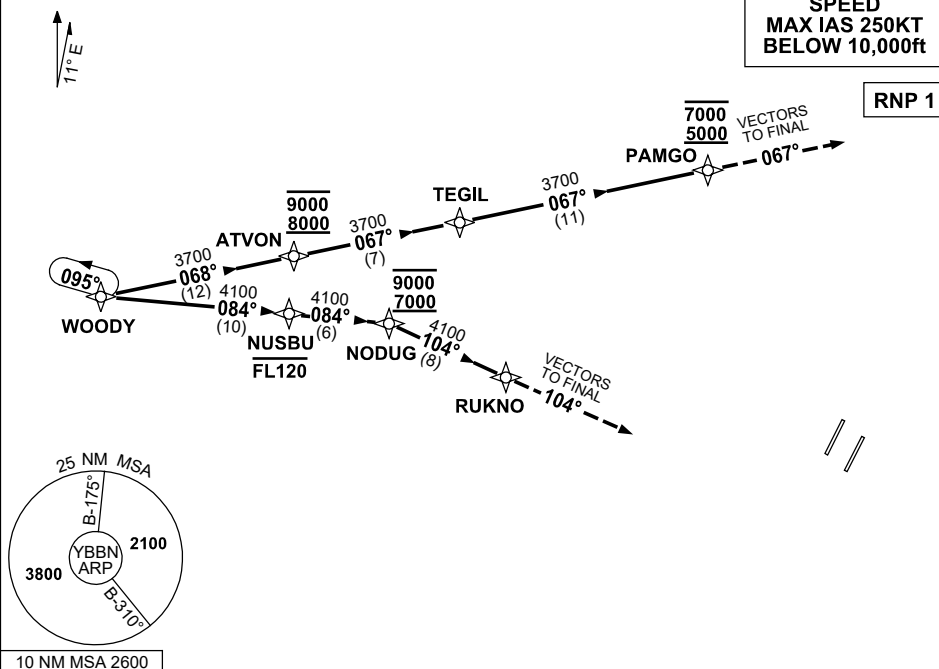


# STANDARD INSTRUMENT ARRIVAL (STAR) WOODY TWO VICTOR ARRIVAL (RNAV) RWY 01L/19R BRISBANE, QLD (YBBN)

20 MAR 2025

ATIS	APP			TWR	SMC			Bearings are Magnetic Elevations in FEET AMSL
113.2 125.5	NORTH	SOUTH	FINALS	01L/19R 118.0 01R/19L 120.5	NORTH	DOM	SOUTH	
	124.7	125.6	119.25		124.05	121.7	122.25	

NOT TO SCALE



## ARRIVAL: WOODY TWO VICTOR

### RWY 01L:

- From WOODY track 084° to NUSBU  
**Cross** NUSBU AT or BLW FL120
- Track 084° to NODUG  
**Cross** NODUG BTN 7000ft and 9000ft
- Turn RIGHT, track 104° to RUKNO
- Track 104°, EXPECT radar vectors to final

### RWY 19R:

- From WOODY track 068° to ATVON  
**Cross** ATVON BTN 8000ft and 9000ft
- Track 067° to TEGIL
- Track 067° to PAMGO  
**Cross** PAMGO BTN 5000ft and 7000ft
- Track 067°, EXPECT radar vectors to final

## COMMUNICATIONS FAILURE: PROCEDURE IN IMC IF ABLE CTC BN ATC ON TEL: (07) 3866-3694

- Squawk 7600, comply with vertical navigation requirements, but not below MSA.
- Track via the latest STAR clearance to the nominated runway, then fly the most suitable approach in accordance with ERSA EMERG Section 1.5.

Changes: MSA.

BBNSR33-182