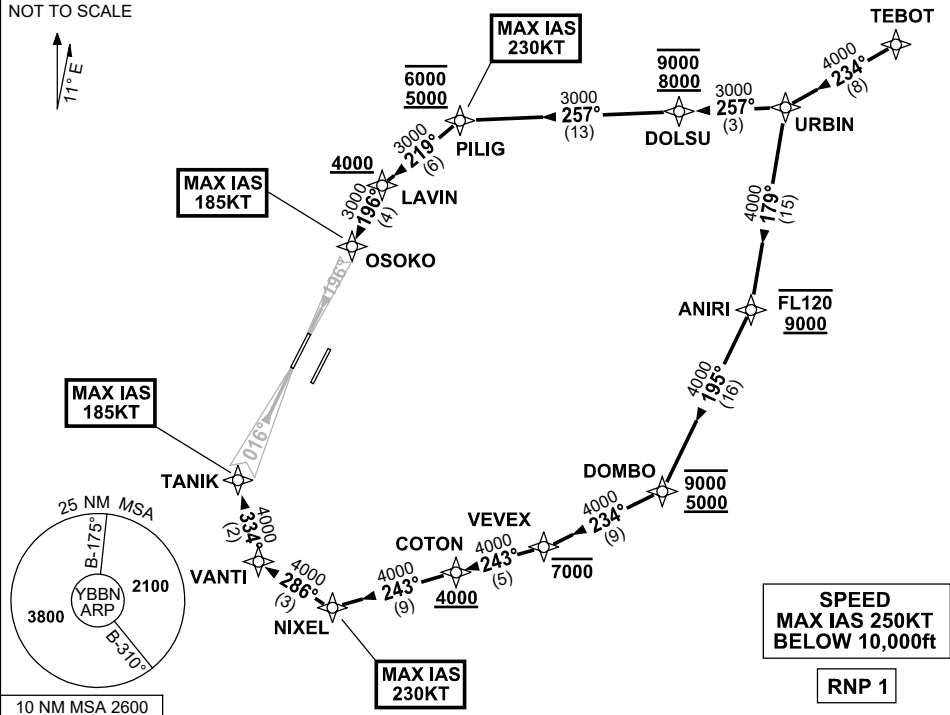


# STANDARD INSTRUMENT ARRIVAL (STAR) TEBOT TWO ALPHA ARRIVAL (RNAV) RWY 01L/19R BRISBANE, QLD (YBBN)

20 MAR 2025

ATIS	APP			TWR	SMC		Bearings are Magnetic Elevations in FEET AMSL
113.2 125.5	NORTH	SOUTH	FINALS	01L/19R	DOM	SOUTH	
	124.7	125.6	119.25	118.0	121.7	122.25	
				01R/19L			
				120.5			

NOT TO SCALE



## ARRIVAL: TEBOT TWO ALPHA

### RWY 01L:

- From TEBOT track 234° to URBIN
- Turn LEFT, track 179° to ANIRI  
**Cross** ANIRI BTN 9000ft AND FL120
- Turn RIGHT, track 195° to DOMBO  
**Cross** DOMBO BTN 5000ft and 9000ft
- Turn RIGHT, track 234° to VEVE  
**Cross** VEVE AT or BLW 7000ft
- Turn RIGHT, track 243° to COTON  
**Cross** COTON AT or ABV 4000ft
- Track 243° to NIXEL  
MAX IAS 230KT AT NIXEL
- Turn RIGHT, track 286° to VANTI
- Turn RIGHT, track 334° to TANIK for ILS,  
RNP Z or LOC RWY 01L approach  
MAX IAS 185KT AT TANIK

### RWY 19R:

- From TEBOT track 234° to URBIN
- Turn RIGHT, track 257° to DOLSU  
**Cross** DOLSU BTN 8000ft and 9000ft
- Track 257° to PILIG  
**Cross** PILIG BTN 5000ft and 6000ft  
MAX IAS 230KT AT PILIG
- Turn LEFT, track 219° to LAVIN  
**Cross** LAVIN AT or ABV 4000ft
- Turn LEFT, track 196° to OSOKO for ILS,  
RNP Z or LOC RWY 19R approach  
MAX IAS 185KT AT OSOKO

## COMMUNICATIONS FAILURE: PROCEDURE IN IMC

### IF ABLE CTC BN ATC ON TEL: (07) 3866-3694

- Squawk 7600, comply with vertical navigation requirements, but not below MSA.
- Track via the latest STAR clearance to the nominated runway, then fly the most suitable approach in accordance with ERSA EMERG Section 1.5.

Changes: MSA.

BBNSR29-182