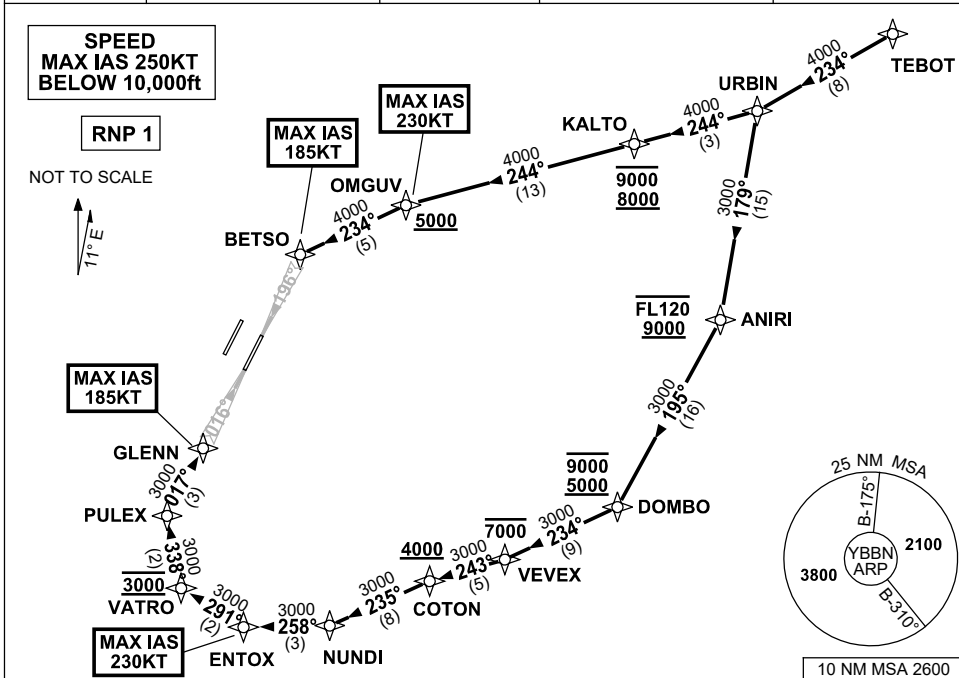


# STANDARD INSTRUMENT ARRIVAL (STAR) TEBOT TWO ALPHA ARRIVAL (RNAV) RWY 01R/19L BRISBANE, QLD (YBBN)

20 MAR 2025

ATIS 113.2 125.5	APP NORTH 124.7 SOUTH 125.6 FINALS 119.25	TWR 01R/19L 120.5 01L/19R 118.0	NORTH 124.05	SMC DOM 121.7	SOUTH 122.25	Bearings are Magnetic Elevations in FEET AMSL
---------------------	--	---------------------------------------	--------------	------------------	--------------	--



## ARRIVAL: TEBOT TWO ALPHA RWY 01R:

- From TEBOT track 234° to URBIN.
- Turn LEFT, track 179° to ANIRI  
**Cross ANIRI BTN 9000ft and FL120**
- Turn RIGHT, track 195° to DOMBO  
**Cross DOMBO BTN 5000ft AND 9000ft**
- Turn RIGHT, track 234° to VEVE  
**Cross VEVE AT or BLW 7000ft**
- Turn RIGHT, track 243° to COTON  
**Cross COTON AT or ABV 4000ft**
- Turn LEFT, track 235° to NUNDI
- Turn RIGHT, track 258° to ENTOM  
**MAX IAS 230KT AT ENTOM**
- Turn RIGHT, track 291° to VATRO  
**Cross VATRO AT 3000ft**
- Turn RIGHT, track 338° to PULEX
- Turn RIGHT, track 017° to GLENN for ILS,  
RNP Z, LOC or RNP T RWY 01R approach  
**MAX IAS 185KT AT GLENN**

## RWY 19L:

- From TEBOT track 234° to URBIN.
- Turn RIGHT, track 244° to KALTO  
**Cross KALTO BTN 8000ft and 9000ft**
- Track 244° to OMGUV  
**Cross OMGUV AT or ABV 5000ft**  
**MAX IAS 230KT AT OMGUV**
- Turn LEFT, track 234° to BETSO for ILS,  
RNP Z, LOC or RNP T RWY 19L approach  
**MAX IAS 185KT AT BETSO**

## COMMUNICATIONS FAILURE: PROCEDURE IN IMC IF ABLE CTC BN ATC ON TEL: (07) 3866-3694

- Squawk 7600, comply with vertical navigation requirements, but not below MSA.
- Track via the latest STAR clearance to the nominated runway, then fly the most suitable approach in accordance with ERSA EMERG Section 1.5.

Changes: MSA.

BBNSR28-182