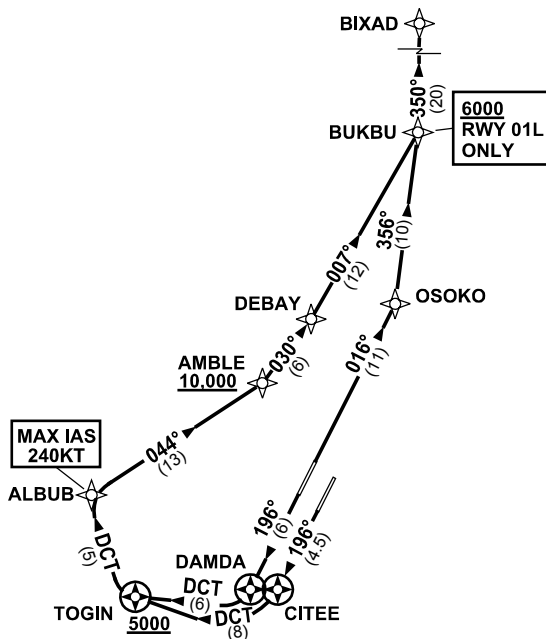


**STANDARD INSTRUMENT DEPARTURES (SID)  
BIXAD TWO DEPARTURE (RNAV) RWY 01L, 19L, 19R  
BRISBANE, QLD (YBBN)**

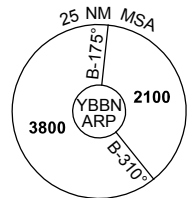
**20 MAR 2025**

|                     |               |                 |                     |                 |                                       |                      |                                                  |
|---------------------|---------------|-----------------|---------------------|-----------------|---------------------------------------|----------------------|--------------------------------------------------|
| ATIS<br>113.2 125.5 | ACD<br>118.85 | NORTH<br>124.05 | SMC<br>DOM<br>121.7 | SOUTH<br>122.25 | TWR<br>01R/19L 120.5<br>01L/19R 118.0 | DEP<br>118.45 133.45 | Bearings are Magnetic<br>Elevations in FEET AMSL |
|---------------------|---------------|-----------------|---------------------|-----------------|---------------------------------------|----------------------|--------------------------------------------------|

NOT TO SCALE



**RNP 1**



10 NM MSA 2600

**DEPARTURE: BIXAD TWO**

**RWY 01L**

GRAD 3.3% (5.3% TO 3000ft)

- Track 016° to OSOKO
- Turn LEFT, track 356° to BUKBU  
Cross BUKBU AT or ABV 6000ft  
(RQ GRAD TO BUKBU: 4.7%)
- Turn LEFT, track 350° to BIXAD

**RWY 19R**

GRAD 3.3%

MAX IAS 240KT until ALBUB

- Track 196° to DAMDA
- Turn RIGHT, track DCT to TOGIN  
Cross TOGIN AT or ABV 5000ft  
(RQ GRAD TO TOGIN: 6.9%)
- Turn RIGHT, track DCT° to ALBUB
- Turn RIGHT, track 044° to AMBLE  
Cross AMBLE AT or ABV 10,000ft  
(RQ GRAD TO AMBLE: 4.8% FM TOGIN)
- Turn LEFT, track 030° to DEBAY
- Turn LEFT, track 007° to BUKBU
- Turn LEFT, track 350° to BIXAD

**RWY 19L**

GRAD 3.3%

MAX IAS 240KT until ALBUB

- Track 196° to CITEE
- Turn RIGHT, track DCT to TOGIN  
Cross TOGIN AT or ABV 5000ft  
(RQ GRAD TO TOGIN: 7%)
- Turn RIGHT, track DCT° to ALBUB
- Turn RIGHT, track 044° to AMBLE  
Cross AMBLE AT or ABV 10,000ft  
(RQ GRAD TO AMBLE: 4.8% FM TOGIN)
- Turn LEFT, track 030° to DEBAY
- Turn LEFT, track 007° to BUKBU
- Turn LEFT, track 350° to BIXAD

Changes: MSA, RWY 01R PROC MOVED TO SEPARATE CHART.

BBNDP18-182