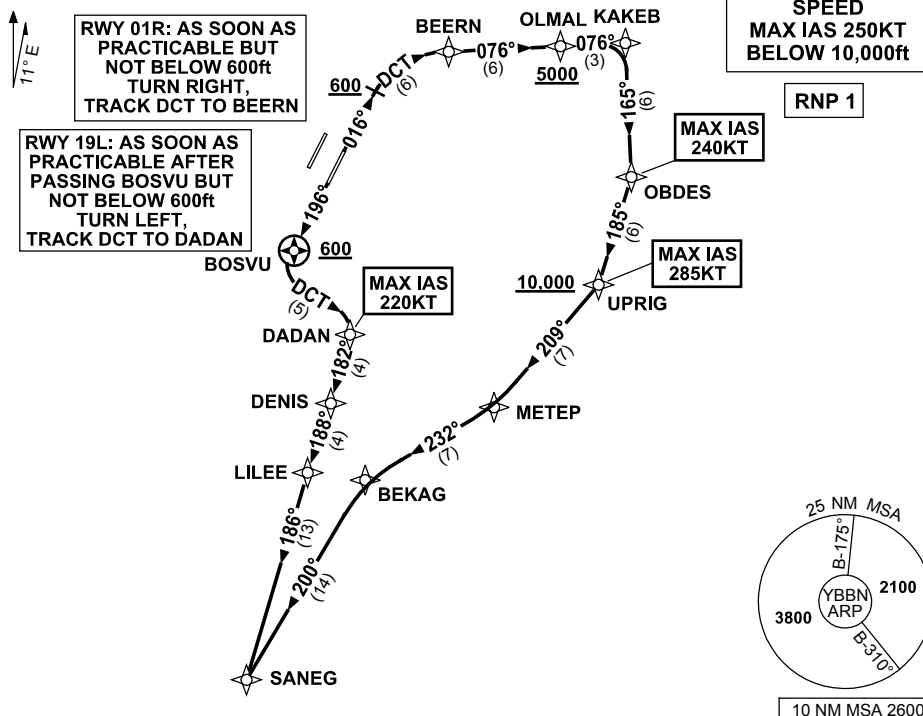


**STANDARD INSTRUMENT DEPARTURES (SID)  
SANEG TWO DEPARTURE (RNAV) RWY 01R/19L  
BRISBANE, QLD (YBBN)**

20 MAR 2025

ATIS 113.2 125.5	ACD 118.85	NORTH 124.05	SMC DOM 121.7	SOUTH 122.25	TWR 01R/19L 120.5 01L/19R 118.0	DEP 118.45	Bearings are Magnetic Elevations in FEET AMSL
---------------------	---------------	-----------------	---------------------	-----------------	---------------------------------------	---------------	--

NOT TO SCALE



**DEPARTURE: SANEG TWO**

**RWY 01R**

GRAD 3.3%

MAX IAS 240KT until OBDES

- Track 016°
- AT or ABV 600ft turn RIGHT, track DCT to BEERN
- Turn RIGHT, track 076° to OLMA  
**Cross OLMA AT or ABV 5000ft**  
(RQ GRAD TO OLMA: 6.2%)
- Track 076° to KAKEB
- Turn RIGHT, track 165° to OBDES  
MAX IAS 285KT until UPRIG
- Turn RIGHT, track 185° to UPRIG  
**Cross UPRIG AT or ABV 10,000ft**  
(RQ GRAD TO UPRIG: 6.2% FM OLMA)
- Turn RIGHT, track 209° to METEP
- Turn RIGHT, track 232° to BEKAG
- Turn LEFT, track 200° to SANEG

**RWY 19L**

GRAD 3.3%

MAX IAS 220KT until DADAN

- Track 196°
- AT or ABV 600ft, but not before BOSVU, turn LEFT, track DCT to DADAN
- Turn RIGHT, track 182° to DENIS
- Turn RIGHT, track 188° to LILEE
- Turn LEFT, track 186° to SANEG