

**STANDARD INSTRUMENT DEPARTURES (SID)  
BRISBANE FOUR DEPARTURE (RADAR)  
BRISBANE, QLD (YBBN)**

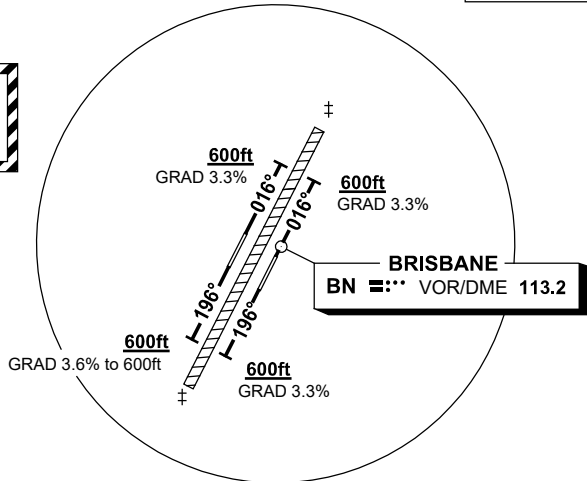
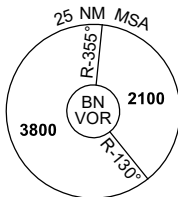
**20 MAR 2025**

ATIS 113.2 125.5	ACD 118.85	NORTH 124.05	SMC DOM 121.7	SOUTH 122.25	TWR 01R/19L 120.5 01L/19R 118.0	DEP 118.45 133.45	Bearings are Magnetic Elevations in FEET AMSL
---------------------	---------------	-----------------	---------------------	-----------------	---------------------------------------	----------------------	--

NOT TO SCALE



**SPEED  
MAX IAS 250KT  
BELOW 10,000ft**



10 NM MSA 2600

**DEPARTURE: BRISBANE FOUR (RADAR)**

**RWY 01L**

GRAD 3.3% to 600ft (5.8% TO 3200ft)

- Track 016°
- AT or ABV 600ft but not before DER turn to assigned heading or track
- When directed, contact Departures for radar vectors

**RWY 19R**

GRAD 3.6% to 600ft (5.3% TO 3700ft)

- Track 196°
- AT or ABV 600ft but not before DER turn to assigned heading or track
- When directed, contact Departures for radar vectors

**RWY 01R**

GRAD 3.3% to 600ft ( 4.9% TO 3800ft)

- Track 016°
- AT or ABV 600ft but not before DER turn to assigned heading or track
- When directed, contact Departures for radar vectors

**RWY 19L**

GRAD 3.3% to 600ft (5.6% TO 3400ft)

- Track 196°
- AT or ABV 600ft but not before DER turn to assigned heading or track
- When directed, contact Departures for radar vectors

**COMMUNICATIONS FAILURE PROCEDURE**

On recognition of communications failure

- Squawk 7600
- Maintain last assigned vector for two minutes, and
- CLIMB IF NECESSARY TO MINIMUM SAFE ALTITUDE, to maintain terrain clearance, then
- proceed in accordance with the latest ATC route clearance acknowledged.

Changes: MSA, Editorial.

BBNDP01-182