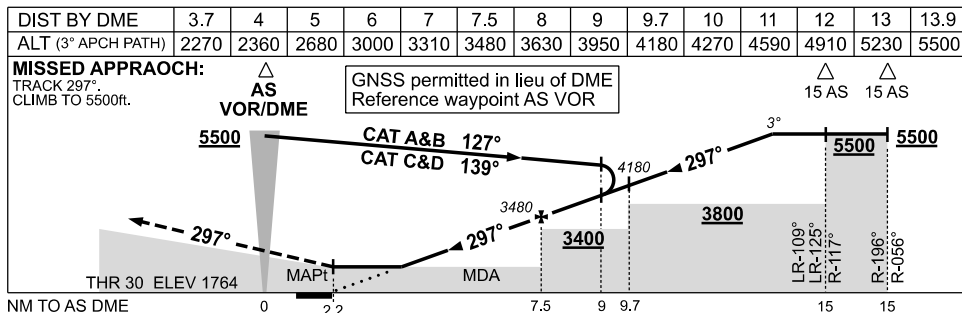
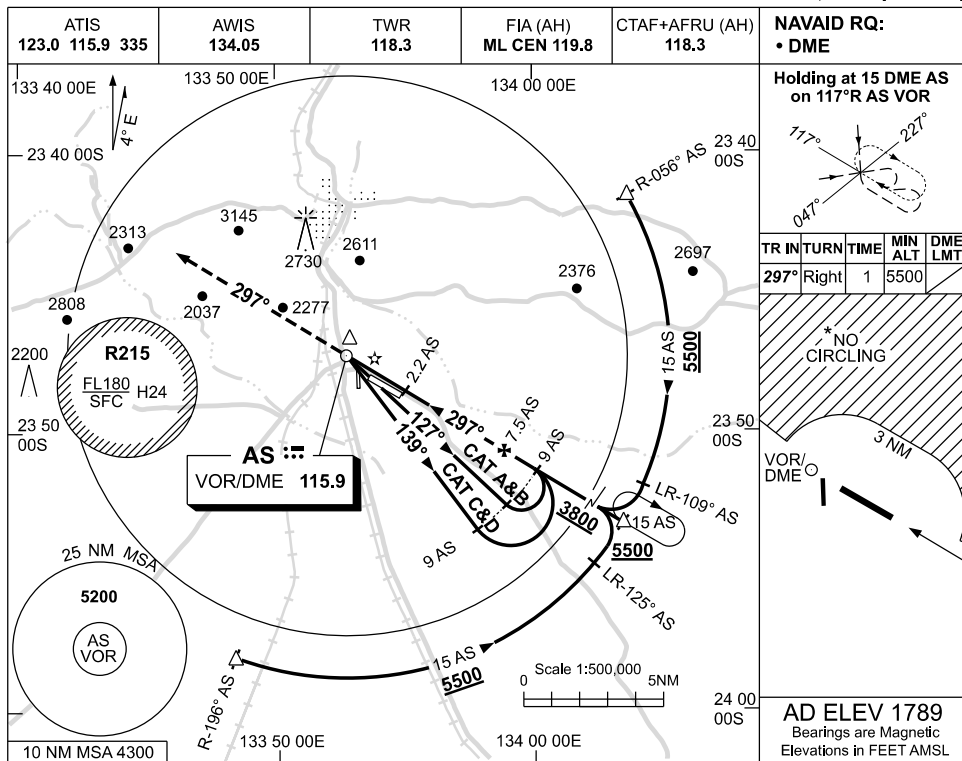


USE QNH

VOR RWY 30

09 JUL 2026

ALICE SPRINGS, NT (YBAS)



NOTES

1. MAX IAS:
INITIAL : 210KT.
- * 2. SPECIAL ALTN MNM
800/4.0KM.
- * 3. NO CIRCLING N
OF RWY 12 / 30
BEYOND 3NM.
4. CTA CONTAINMENT
NOT ASSURED WHEN
HOLDING AT OR BLW
6500ft.

CATEGORY	A	B	C	D
S-I VOR/DME	2270 (506-2.9)			
CIRCLING*	2570 (781-2.4)		2990 (1201-4.0) 2990 (1201-5.0)	
ALTERNATE*	(1281-4.4)		(1701-6.0) (1701-7.0)	

Changes: VAR.

BASVO02-187