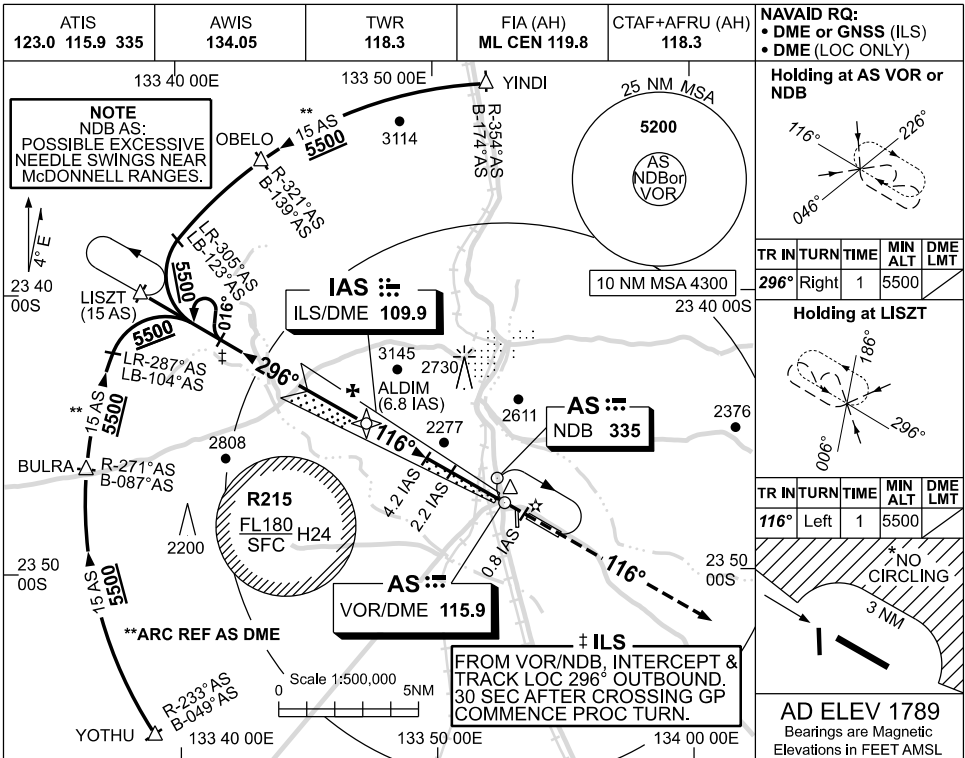


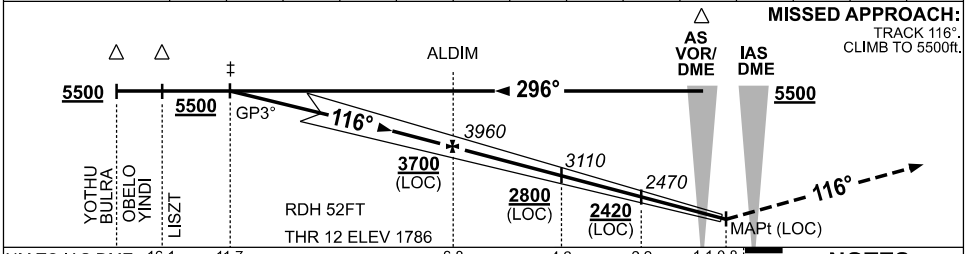
USE QNH

ILS-Z or LOC-Z RWY 12
ALICE SPRINGS, NT (YBAS)

09 JUL 2026



NM TO IAS DME	11.7	11	10	9	8	6.8	6	5	4.2	4	3	2.2	2	1.7
ALT (3° APCH PATH)	5500	5290	4970	4650	4330	3960	3690	3380	3110	3060	2740	2470	2420	2320



NM TO IAS DME	16.1	11.7			6.8		4.2	2.2	1.1	0.8				
NM TO THR 12	16	11.5			6.7		4	2	1	0.6				

CATEGORY	A	B	C	D/D _L
S-I ILS		2100 (314)	0.8	
S-I LOC		2320 (531-2.1)		
CIRCLING *	2570 (781-2.4)		2990 (1201-4.0)	2990 (1201-5.0)
ALTERNATE *	(1281-4.4)		(1701-6.0)	(1701-7.0)

- MAX IAS:
 HOLDING : 185KT.
 HLDG NOT ABOVE
 FL120.
- SPECIAL ALTN MNM
 800/4.0KM.
- NO CIRCLING N
 OF RWY 12 / 30
 BEYOND 3NM.
- CTA CONTAINMENT
 NOT ASSURED WHEN
 HOLDING AT LISZT
 AT OR BLW 6500ft.

Changes: VAR.

BASII02-187