

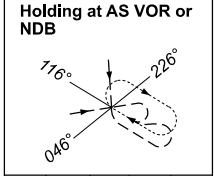
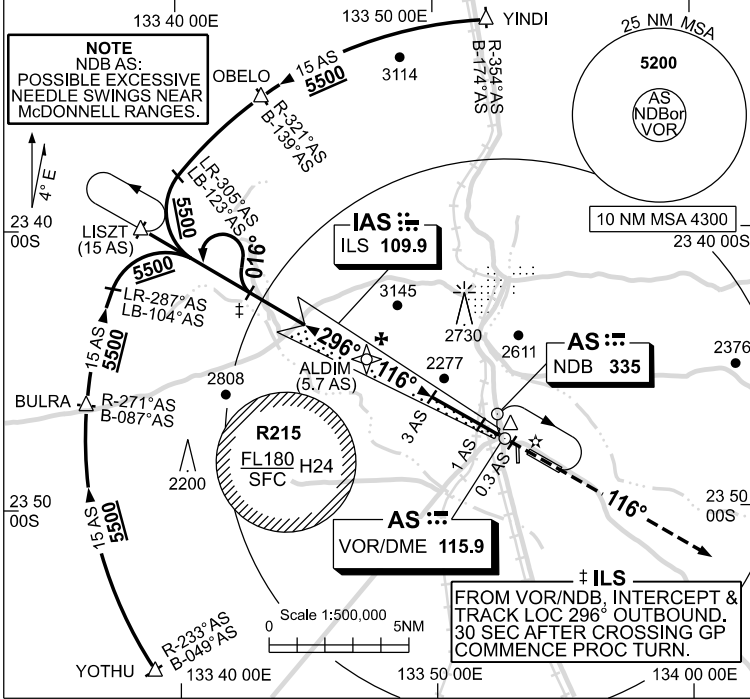
USE QNH

ILS-Y or LOC-Y RWY 12
ALICE SPRINGS, NT (YBAS)

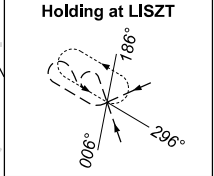
09 JUL 2026

ATIS 123.0 115.9 335	AWIS 134.05	TWR 118.3	FIA (AH) ML CEN 119.8	CTAF+AFRU (AH) 118.3
-------------------------	----------------	--------------	--------------------------	-------------------------

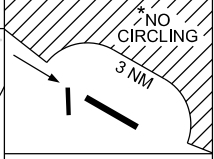
NAVAID RQ:
 • DME or GNSS



TR	IN	TURN	TIME	MIN ALT	DME LMT
296°	Right	1	5500		

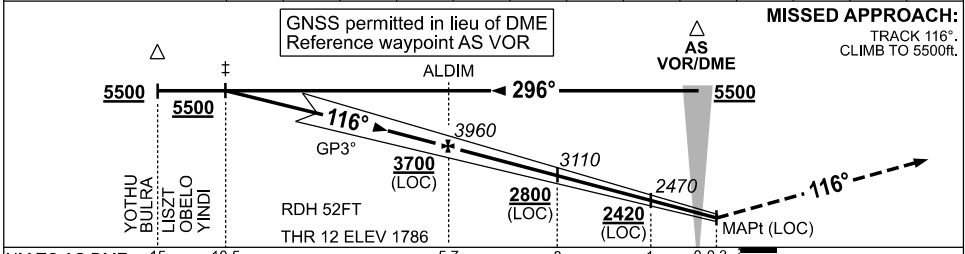


TR	IN	TURN	TIME	MIN ALT	DME LMT
116°	Left	1	5500		



AD ELEV 1789
 Bearings are Magnetic
 Elevations in FEET AMSL

NM TO AS DME	10.5	10	9	8	7	6	5.7	5	4	3	2	1	0.5
ALT (3° APCH PATH)	5500	5330	5010	4690	4370	4060	3960	3740	3420	3110	2780	2470	2320



MISSED APPROACH:
 TRACK 116°. CLIMB TO 5500ft.

NM TO AS DME	15	10.5	5.7	3	1	0.3
NM TO THR 12	11.5	6.7	4	2	1.0	0

- NOTES**
- MAX IAS:
HOLDING : 185KT.
HLDG NOT ABOVE FL120.
 - SPECIAL ALTN MNM 800/4.0KM.
 - NO CIRCLING N OF RWY 12 / 30 BEYOND 3NM.
 - CTA CONTAINMENT NOT ASSURED WHEN HOLDING AT LISZT AT OR BLW 6500ft.

CATEGORY	A	B	C	D/D _L
S-I ILS		2100 (314) 0.8		
S-I LOC		2320 (531-2.1)		
CIRCLING *	2570 (781-2.4)		2990 (1201-4.0)	2990 (1201-5.0)
ALTERNATE **	(1281-4.4)		(1701-6.0)	(1701-7.0)

Changes: VAR.

BASII01-187