

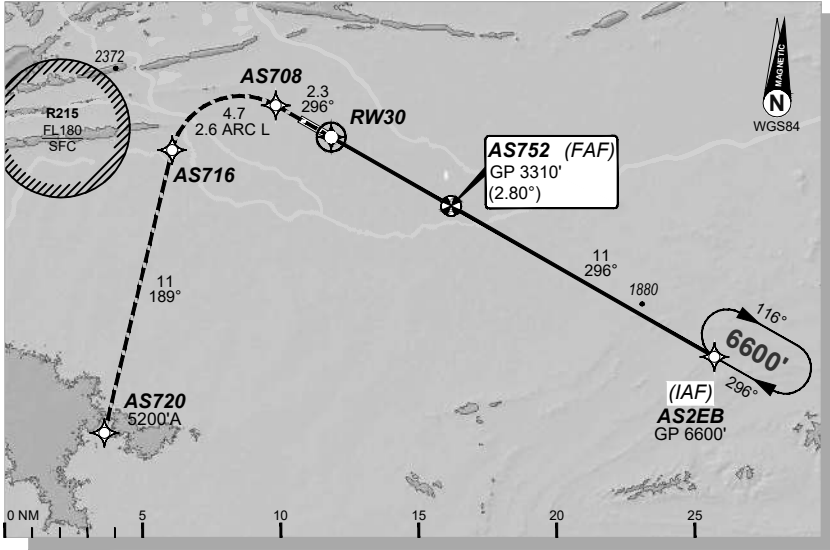
**USE QNH**

RNP U RWY 30 (AR)

**09 JUL 2026**

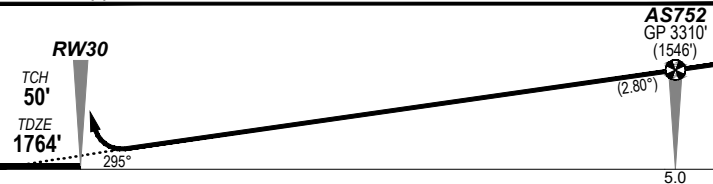
**ALICE SPRINGS, NT (YBAS)**

ATIS	AWIS	TWR	FIA (AH)	CTAF + AFRU (AH)
123.0 115.9 335	134.05	118.3	ML CEN 119.8	118.3
RNP AR <b>RNV U 30</b>	Apt Elev. <b>1789'</b> TDZE <b>1764'</b>	AS752 (FAF) <b>GP 3310'</b> (2.80°)	Trans Level <b>FL110</b>	



**MISSED APPROACH:**

Climb to **5200'** via the RNP AR  
Missed Approach track to **AS720**.



**NOTES:**

- YBAS ACT QNH RQ.
- Minimum MAP gradient (All Engines) 3.0% to 5200FT.
- APCH Path does not coincide with PAPI glide path 3°.

				RNP <b>0.30</b>	
				DA(H) <b>2067'</b> (303')	
C		C		C	<b>1600 m</b>

2.5 NM MSA  
**5200**  
YBAS ARP

10 NM MSA 4300

**FOR CASA APPROVED OPERATORS ONLY**

20260206/201 General Electric Company Proprietary & Confidential Information

Changes: BASEB to AS2EB, editorial.

**DO NOT USE FOR NAVIGATION**

BASGN08-187

© Airservices Australia

Prepared by GE Aerospace

