

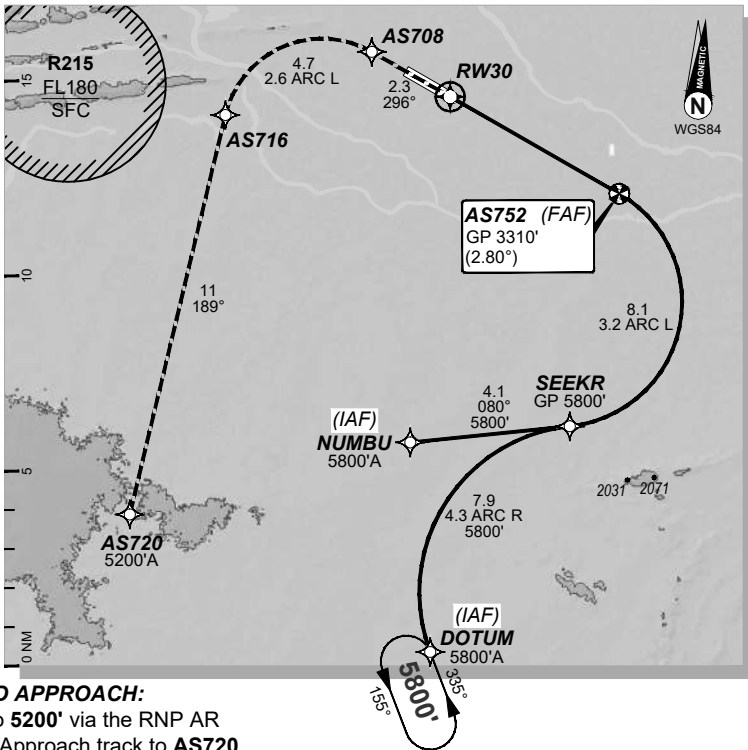
USE QNH

RNP P RWY 30 (AR)

09 JUL 2026

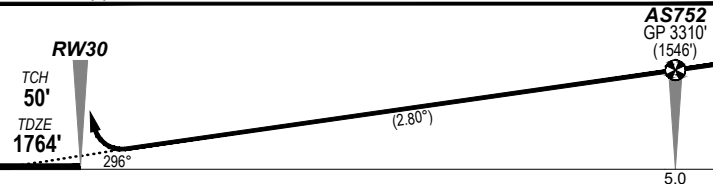
ALICE SPRINGS, NT (YBAS)

ATIS	AWIS	TWR	FIA (AH)	CTAF + AFRU (AH)
123.0 115.9 335	134.05	118.3	ML CEN 119.8	118.3
RNP AR RNP P 30	Apt Elev. 1789' TDZE 1764'	AS752 (FAF) GP 3310' (2.80°)	Trans Level FL110	



**MISSED APPROACH:**

Climb to 5200' via the RNP AR  
Missed Approach track to AS720.



**NOTES:**

- YBAS ACT QNH RQ.
- Minimum MAP gradient (All Engines) 3.0% to 5200FT.
- APCH Path does not coincide with PAPI glide path 3°.

				RNP 0.30
				DA(H) 2067' (303')
C		C		1600 m

2.5 NM MSA  
5200  
YBAS  
ARF

10 NM MSA 4300

**FOR CASA APPROVED OPERATORS ONLY**

202602061203 General Electric Company Proprietary & Confidential Information

Changes: Editorial.

**DO NOT USE FOR NAVIGATION**

BASGN07-187

© Airservices Australia

Prepared by GE Aerospace

