

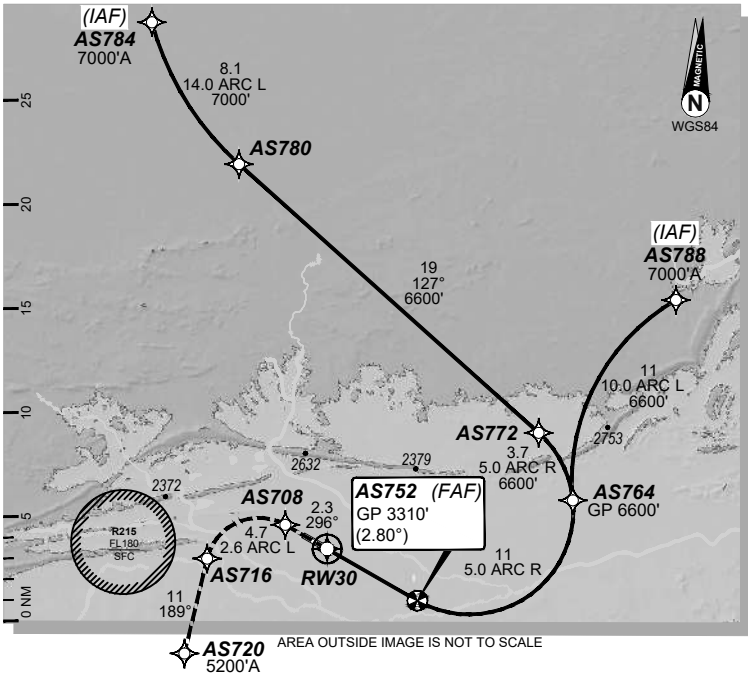
USE QNH

RNP M RWY 30 (AR)

09 JUL 2026

ALICE SPRINGS, NT (YBAS)

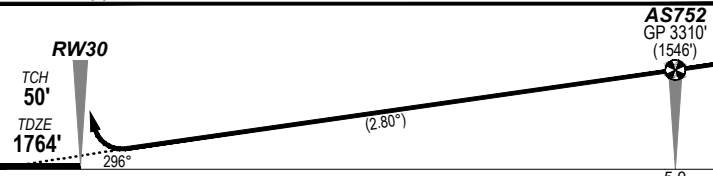
ATIS	AWIS	TWR	FIA (AH)	CTAF + AFRU (AH)
123.0 115.9 335	134.05	118.3	ML CEN 119.8	118.3
RNP AR RNV M 30	Apt Elev. 1789' TDZE 1764'	AS752 (FAF) GP 3310' (2.80°)	Trans Level FL110	



AREA OUTSIDE IMAGE IS NOT TO SCALE

MISSED APPROACH:

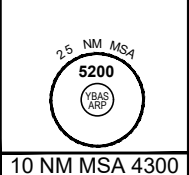
Climb to 5200' via the RNP AR
Missed Approach track to AS720.



NOTES:

- YBAS ACT QNH RQ.
- Minimum MAP gradient (All Engines) 3.0% to 5200FT.
- APCH Path does not coincide with PAPI glide path 3°.

				RNP 0.30
				DA(H) 2067' (303')
C		C		1600 m



FOR CASA APPROVED OPERATORS ONLY

202602061202 General Electric Company Proprietary & Confidential Information

Changes: Editorial.

DO NOT USE FOR NAVIGATION

BASGN06-187

© Airservices Australia

Prepared by GE Aerospace

