

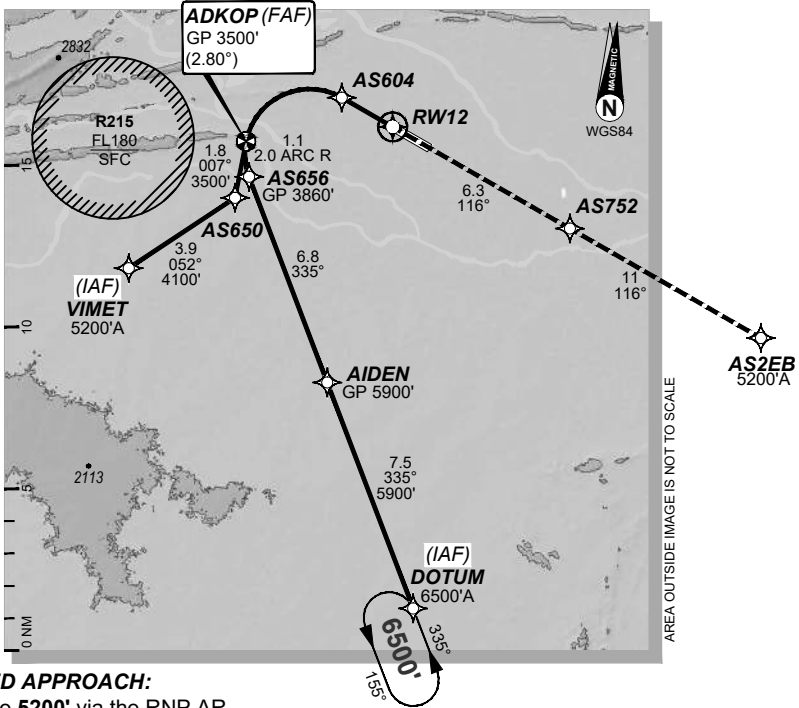
USE QNH

RNP P RWY 12 (AR)

09 JUL 2026

ALICE SPRINGS, NT (YBAS)

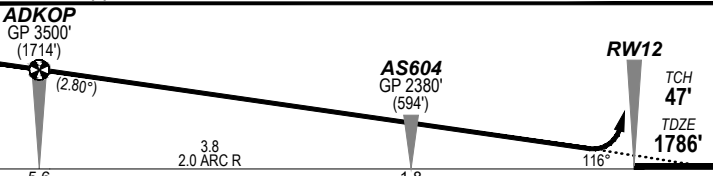
ATIS	AWIS	TWR	FIA (AH)	CTAF + AFRU (AH)
123.0 115.9 335	134.05	118.3	ML CEN 119.8	118.3
RNP AR RNP P 12	Apt Elev. 1789' TDZE 1786'	ADKOP (FAF) GP 3500' (2.80°)	Trans Level FL110	



AREA OUTSIDE IMAGE IS NOT TO SCALE

MISSED APPROACH:

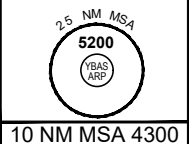
Climb to 5200' via the RNP AR
 Missed Approach track to AS2EB.



NOTES:

- YBAS ACT QNH RQ.
- Minimum MAP gradient (All Engines) 3.0% to 5200FT.
- APCH Path does not coincide with PAPI glide path 3°.

		RNP 0.30	
		DA(H) 2104' (318')	
		HIALS OUT	
C	C	C	C
		800 m	1700 m



FOR CASA APPROVED OPERATORS ONLY

202602061204 General Electric Company Proprietary & Confidential Information

Changes: BASEB to AS2EB, editorial.

DO NOT USE FOR NAVIGATION

BASGN04-187

© Airservices Australia

Prepared by GE Aerospace

