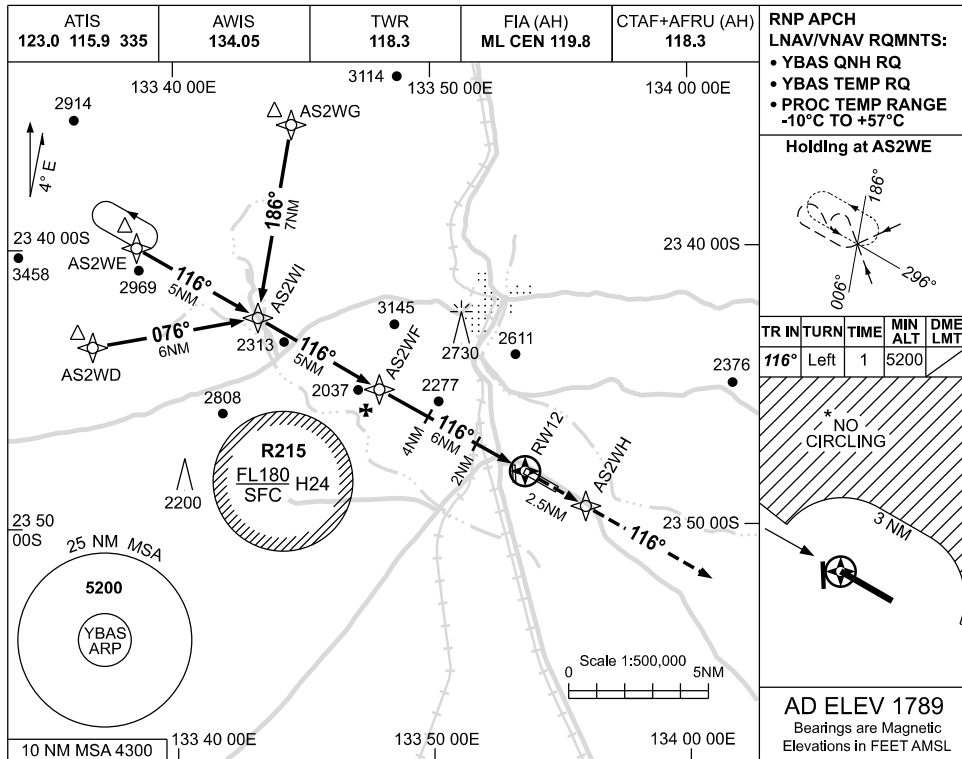


USE QNH

RNP Z RWY 12

ALICE SPRINGS, NT (YBAS)

09 JUL 2026

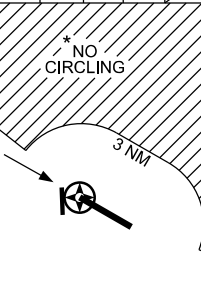


**RNP APCH
LNAV/VNAV RQMTS:**

- YBAS QNH RQ
- YBAS TEMP RQ
- PROC TEMP RANGE -10°C TO +57°C

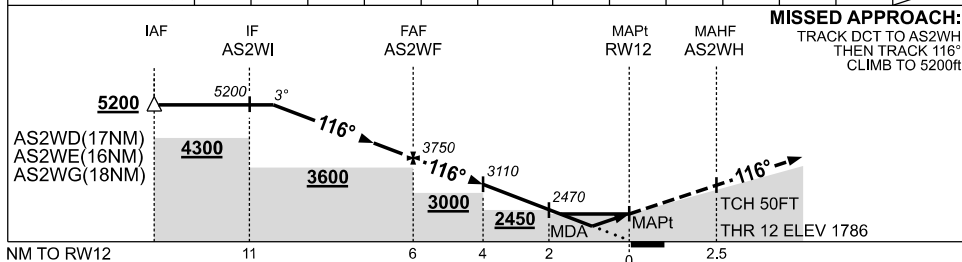
Holding at AS2WE

TR	IN	TURN	TIME	MIN ALT	DME LMT
116°	Left	1	5200		



AD ELEV 1789
Bearings are Magnetic
Elevations in FEET AMSL

NM TO NEXT WPT	4.6	4	3	2	1	AS2WF	5	4	3	2	1.5	1	RWY12
ALT (3° APCH PATH)	5200	5020	4700	4380	4070	3750	3430	3110	2790	2470	2320	2140	



MISSED APPROACH:
TRACK DCT TO AS2WH,
THEN TRACK 116°.
CLIMB TO 5200ft.

NOTES

CATEGORY	A	B	C	D
LNAV/VNAV		2140	(354-1.1)	
LNAV		2320	(531-2.1)	
CIRCLING *	2570	(781-2.4)	2990	(1201-4.0) 2990 (1201-5.0)
ALTERNATE		(1281-4.4)	(1701-6.0)	(1701-7.0)

- * 1. NO CIRCLING NORTH OF RWY 12 / 30 BEYOND 3NM.
- 2. CTA CONTAINMENT NOT ASSURED WHEN HOLDING AT OR BLW 6500ft.

Changes: VAR, WPT NAMING CONVENTION.

BASGN01-187