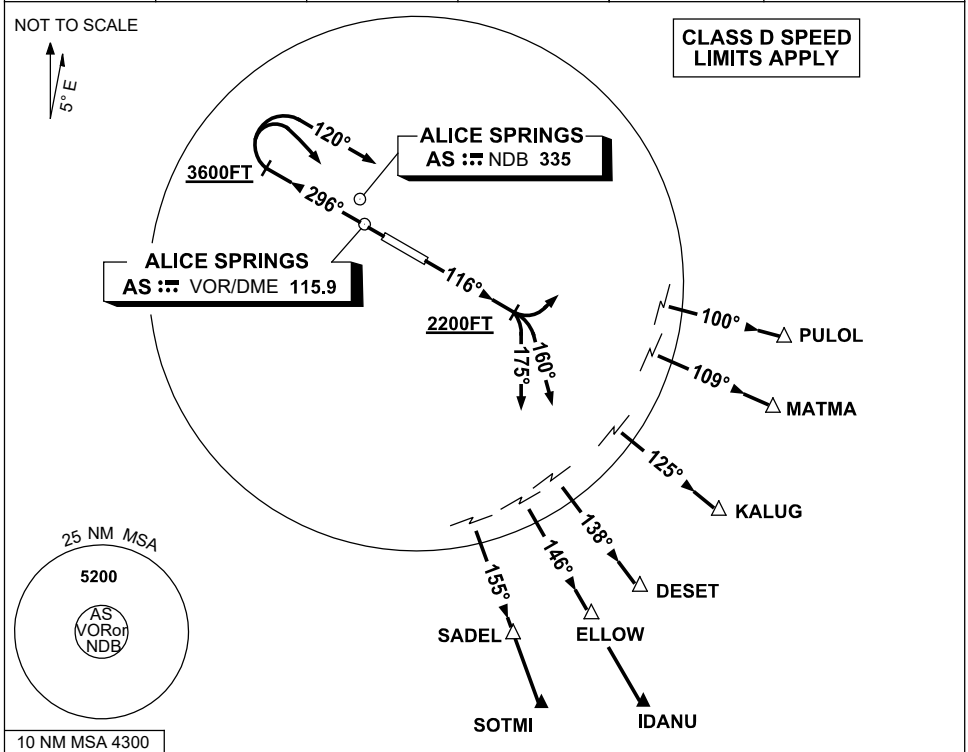


**STANDARD INSTRUMENT DEPARTURES (SID)  
RWY 12/30 SOUTH EAST  
ALICE SPRINGS, NT (YBAS)**

**30 NOV 2023**

ATIS 123.0 115.9 335	AWIS 134.05	TWR 118.3	FIA (AH) ML CEN 119.8	CTAF+AFRU (AH) 118.3	Bearings are Magnetic. Elevations in FEET AMSL
-------------------------	----------------	--------------	--------------------------	-------------------------	---



**PULOL THREE DEPARTURE  
MATMA ONE DEPARTURE  
KALUG THREE DEPARTURE  
SADEL FOUR DEPARTURE**

**RWY 30**

- GRAD 3.8% TO 3600ft THENCE 3.3%
- Track 296°
- At or ABV 3600ft but not before abeam AS VOR or NDB turn RIGHT

For PULOL and MATMA

- Track 120°
- Intercept cleared route

For KALUG, DESET, IDANU, ELLOW, SADEL and SOTMI

- Track DCT to AS VOR or AS NDB
- Overhead AS VOR or AS NDB
- Intercept cleared route

**IDANU THREE DEPARTURE  
DESET FOUR DEPARTURE  
ELLOW THREE DEPARTURE  
SOTMI ONE DEPARTURE**

**RWY 12**

- GRAD 3.3%
- Track 116°
- At or ABV 2200ft

For PULOL and MATMA

- Turn LEFT
- Intercept cleared route

For KALUG, DESET and IDANU

- Turn RIGHT
- Track 160°
- Intercept cleared route

For ELLOW, SADEL and SOTMI

- Turn RIGHT
- Track 175°
- Intercept cleared route

Changes: SOTMI REPLACES SARAH, MATMA REPLACES STEEL, Editorial.

BASDP02-177