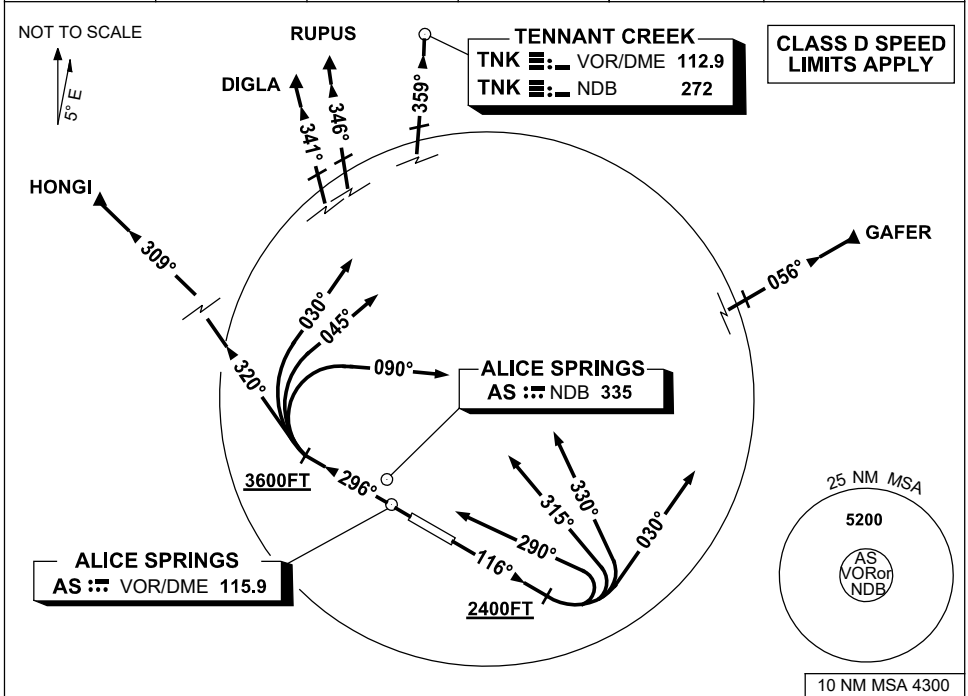


STANDARD INSTRUMENT DEPARTURES (SID)
RWY 12/30 NORTH
ALICE SPRINGS, NT (YBAS)

30 NOV 2023

ATIS 123.0 115.9 335	AWIS 134.05	TWR 118.3	FIA (AH) ML CEN 119.8	CTAF+AFRU (AH) 118.3	Bearings are Magnetic Elevations in FEET AMSL
-------------------------	----------------	--------------	--------------------------	-------------------------	--



DIGLA
RUPUS
TENNANT CREEK (TNK) THREE DEPARTURE
ONE DEPARTURE
THREE DEPARTURE

RWY 30

- GRAD 3.8% TO 3600ft THENCE 3.3%
- Track 296°
- At or ABV 3600ft but not before abeam AS VOR or AS NDB turn RIGHT

For HONGI

- Track 320°
- Intercept cleared route

For DIGLA and RUPUS

- Track 030°
- Intercept cleared route

For TNK

- Track 045°
- Intercept cleared route

For GAFER

- Track 090°
- Intercept cleared route

GAFER THREE DEPARTURE
HONGI THREE DEPARTURE

RWY 12

- GRAD 3.3%
- Track 116°
- At or ABV 2400ft turn LEFT

For HONGI

- Track 290°
- Intercept cleared route

For DIGLA and RUPUS

- Track 315°
- Intercept cleared route

For TNK

- Track 330°
- Intercept cleared route

For GAFER

- Track 030°
- Intercept cleared route

Changes: RUPUS REPLACES SCOTI, Editorial.

BASDP01-177