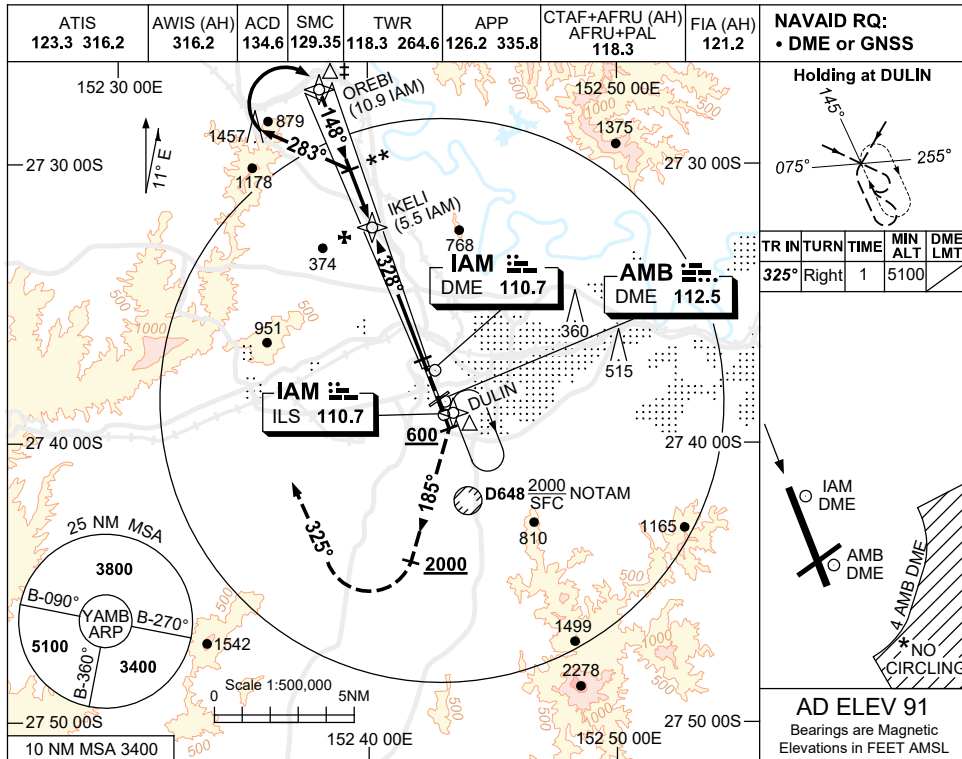


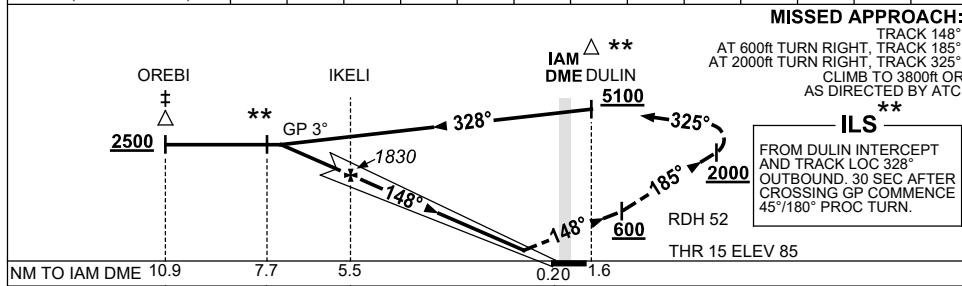
USE QNH

ILS-Z RWY 15
AMBERLEY, QLD (YAMB)

20 MAR 2025



NM TO IAM DME	7.6	7	6	5.5	5	4	3	2	1				
ALT (3° APCH PATH)	2500	2300	1990	1830	1670	1350	1030	710	390				



CATEGORY	A	B	C	D
S-I ILS		390 (305) 0.8		
CIRCLING*	860 (769-2.4)		1090 (999-4.0)	1550 (1459-5.0)
ALTERNATE	(1269-4.4)		(1499-6.0)	(1959-7.0)

- NOTES**
- † ACFT MAY BE RADAR VECTORED TO 10.9 IAM DME IAF.
 - * NO CIRCLING SE OF RWY 15 / 33 AND RWY 04 / 22 BEYOND 4 AMB DME.
 - 3. COLOUR : SEE SPEC NOTICES.

Changes: MISSED APCH INITIAL TURN ALTITUDE, SEGMENT MNM SAFE ALT REMOVED. AMBII01-182