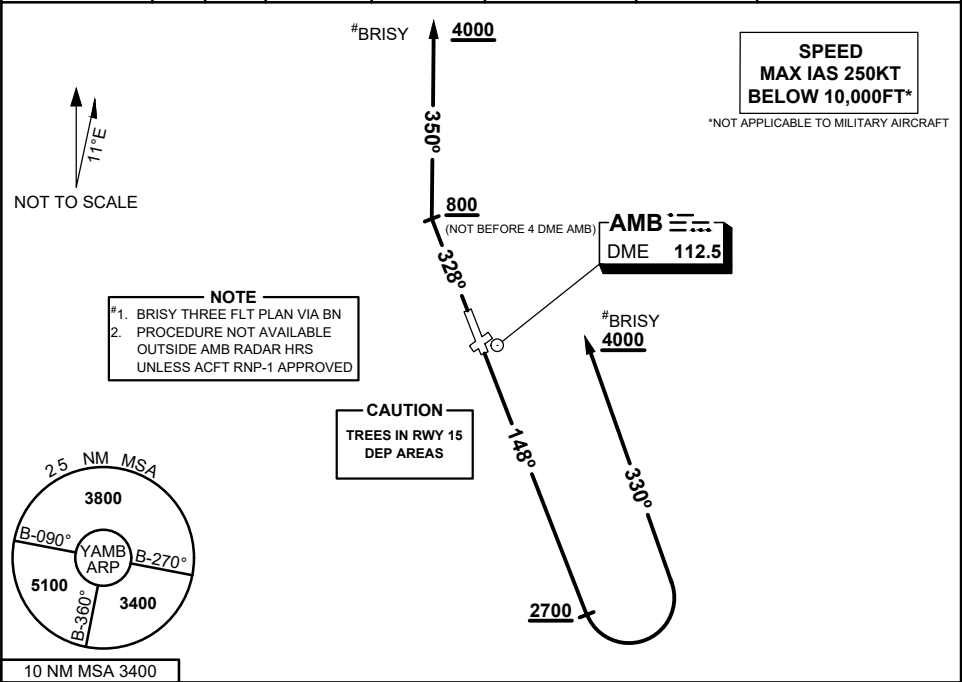


STANDARD INSTRUMENT DEPARTURES (SID)  
RWY 15/33 BRISY THREE  
AMBERLEY, QLD (YAMB)

04 SEP 2025

ATIS / AWIS (AH) 123.3 316.2	ACD 134.6	SMC 129.35	TWR 118.3 264.6	APP 126.2 335.8	CTAF+AFRU (AH) AFRU+PAL (AH) 118.3	FIA BN CEN 121.2	Bearings are Magnetic Elevations in FEET AMSL
---------------------------------	--------------	---------------	--------------------	--------------------	--	---------------------	--



BRISY THREE DEPARTURE

RWY 15

- GRAD 4.3% to 2700FT, then 3.3%
- Track 148°
- When passing 2700FT, but not before DER, turn LEFT track 330°
- CLIMB to 4000FT
- Track as instructed

RWY 33

- GRAD 3.9% to 800FT, then 3.3%
- Track 328°
- When passing 800FT, but not before 4 DME AMB, turn RIGHT track 350°
- CLIMB to 4000FT
- Track as instructed

COMMUNICATIONS FAILURE PROCEDURE

On recognition of communication failure

- Squawk 7600.
- Maintain last assigned vector for two minutes, and
- CLIMB, if necessary, TO MINIMUM SAFE ALTITUDE to maintain terrain clearance, then
- Proceed in accordance with the latest ATC route clearance acknowledged.

Changes: FROM SUP H88/25

AMBDP02-184

