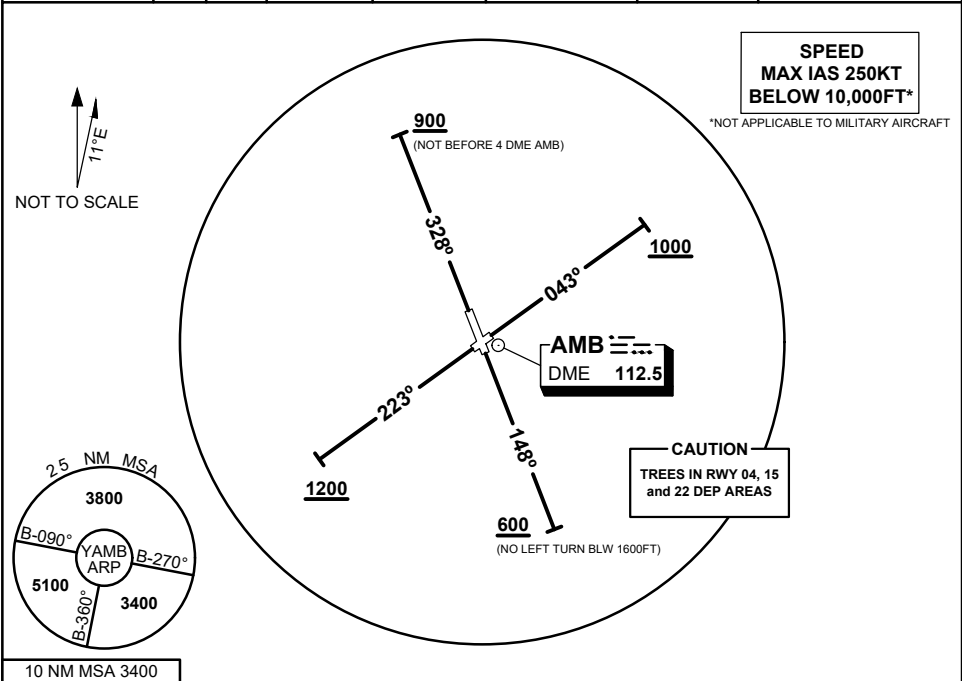


STANDARD INSTRUMENT DEPARTURES (SID)  
AMBERLEY FOUR DEPARTURE (RADAR)  
**AMBERLEY, QLD (YAMB)**

04 SEP 2025

ATIS / AWIS (AH) 123.3 316.2	ACD 134.6	SMC 129.35	TWR 118.3 264.6	APP 126.2 335.8	CTAF+AFRU (AH) AFRU+PAL (AH) 118.3	FIA BN CEN 121.2	Bearings are Magnetic Elevations in FEET AMSL
---------------------------------	--------------	---------------	--------------------	--------------------	--	---------------------	--



**AMBERLEY FOUR DEPARTURE**

**RWY 04**

- GRAD 4.6% to 1000FT, thence 3.3%
- Track 043°
- AT or ABV 1000FT, but not before DER, turn to assigned heading or track

**RWY 15**

- GRAD 4.3% to 2700FT, thence 3.3%
- Track 148°
- AT or ABV 600FT, but not before DER, turn to assigned heading or track (NO LEFT TURN BLW 1600FT)

**RWY 22**

- GRAD 4.7% to 1200FT, thence 3.3%
- Track 223°
- AT or ABV 1200FT, but not before DER, turn to assigned heading or track

**RWY 33**

- GRAD 3.9% to 900FT, thence 3.3%
- Track 328°
- AT or ABV 900FT, but not before 4 DME AMB, turn to assigned heading or track

**COMMUNICATIONS FAILURE PROCEDURE**

On recognition of communication failure

- Squawk 7600.
- Maintain last assigned vector for two minutes, and
- CLIMB, if necessary, TO MINIMUM SAFE ALTITUDE to maintain terrain clearance, then
- Proceed in accordance with the latest ATC route clearance acknowledged.

Changes: FROM SUP H88/25

AMBDP01-184