

**AIP SUPPLEMENT  
(SUP)****AIRAC****H88/26****Effective: 202608051600 UTC**AERONAUTICAL INFORMATION SERVICE,  
AIRSERVICES AUSTRALIA, GPO BOX 367,  
CANBERRA ACT 2601For **DISTRIBUTION** queries, contact:  
Email: [aim\\_editorial@airservicesaustralia.com](mailto:aim_editorial@airservicesaustralia.com)For **CONTENT** queries regarding this SUP, contact:  
Email: [maintenance@globalairspaceolutions.com](mailto:maintenance@globalairspaceolutions.com)**TOWNSVILLE/TOWNSVILLE INTL  
AERODROME (YBTL) NEW PROCEDURE  
FOR TEMPORARY DISPLACED THRESHOLD  
RWY 19 – STAGE 2****1. INTRODUCTION**

- 1.1 This SUP cancels and replaces SUP H82/26 with Section 2 - Implementation removed and para 4.1 updated.
- 1.2 This AIP SUP publishes new procedures for use during the displaced threshold of RWY 19 at Townsville/Townsville INTL Aerodrome (YBTL).
- 1.3 The procedures published in this SUP are to be used only when RWY 19 THR is displaced by 478M. A NOTAM will be issued to indicate when the threshold is displaced.
- 1.4 VOR-T RWY 19 has incorporated the THR RWY 19 displacement of 478M.
- 1.5 During Stage 2, VOR RWY 19 approach will be authorised to circling minima only. These changes will also be promulgated by NOTAM.
- 1.6 Temporary changes to RWY 19 will be available online: [www.airservicesaustralia.com/aip/aip.asp](http://www.airservicesaustralia.com/aip/aip.asp).

**2. DISPLACED THRESHOLD**

RWY	LAT	LONG	ELEV
RWY 19	191431.66S	1464620.50E	14FT

### **3. PROCEDURE DIFFERENCES**

- 3.1 The differences between VOR RWY 19 and VOR-T RWY 19 procedures include:
- Procedure name
  - DTHR location and elevation
  - Initial segment
  - Final approach track alignment
  - FAF altitude
  - SDF altitudes
  - Approach path slope
  - Distance/altitude table
  - Added caution note

### **4. CANCELLATION**

- 4.1 This SUP will be cancelled when Stage 2 works are complete, expected to be in December 2026.

### **5. DISTRIBUTION**

- 5.1 Airservices Australia website only.

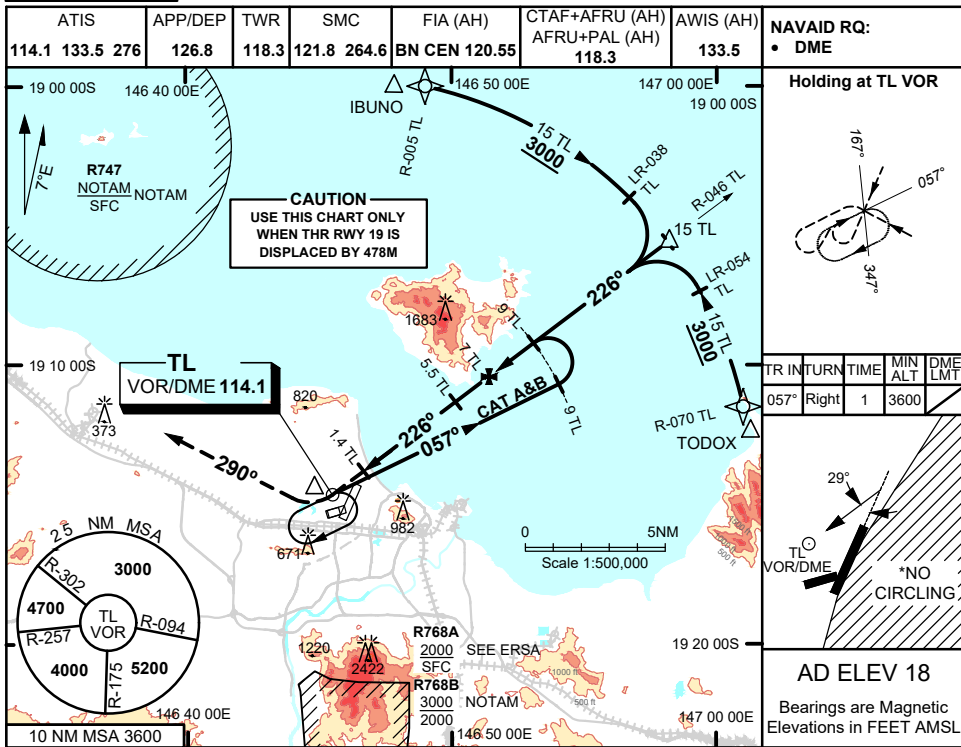
### **Appendix**

1. VOR-T RWY 19

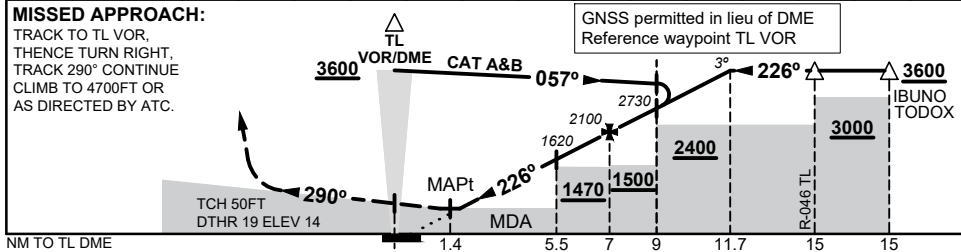
**APPENDIX 1  
TO SUP H88/26**

**TOWNSVILLE/TOWNSVILLE INTL, QLD (YBTL)**

VOR-T RWY 19



NM TO TL DME	2.1	3	4	5	5.5	6	7	8	9	10	11	11.7	
ALT (3° APCH PATH)	550	820	1140	1460	1620	1780	2100	2420	2730	3050	3370	3600	



**NOTES**

1. MAX IAS:  
BASE TURN : 140KT
- \*2. NO CIRCLING IN SECTOR  
EAST OF RWY 01/19.

CATEGORY	A	B	C	D
S-I VOR/DME	550 (532 - 3.0)		<b>NOT APPLICABLE</b>	
CIRCLING*	1090 (1072 - 2.4)			
ALTERNATE	(1572 - 4.4)			

Changes: NEW PROCEDURE

BTLV099-SUP