

**AIP SUPPLEMENT
(SUP)****AIRAC****H82/26****Effective: 202608051600 UTC**AERONAUTICAL INFORMATION SERVICE,
AIRSERVICES AUSTRALIA, GPO BOX 367,
CANBERRA ACT 2601For **DISTRIBUTION** queries, contact:
Email: aim_editorial@airservicesaustralia.comFor **CONTENT** queries regarding this SUP, contact:
Email: maintenance@globalairspacesolutions.com**TOWNSVILLE/TOWNSVILLE INTL
AERODROME (YBTL) NEW DAP FOR
TEMPORARY DISPLACED THRESHOLD
RWY 19 – STAGE 2****1. INTRODUCTION**

- 1.1 This AIP SUP publishes new procedures for use during the displaced threshold of RWY 19 at Townsville/Townsville INTL Aerodrome (YBTL).
- 1.2 The procedures published in this SUP are to be used only when RWY 19 THR is displaced by 478M. A NOTAM will be issued to indicate when the threshold is displaced.
- 1.3 VOR-T RWY 19 has incorporated the THR RWY 19 displacement of 478M.
- 1.4 During Stage 2, VOR RWY 19 approach will be authorised to circling minima only. These changes will also be promulgated by NOTAM.
- 1.5 Temporary changes to RWY 19 will be available online: www.airservicesaustralia.com/aip/aip.asp.

2. IMPLEMENTATION

- 2.1 The procedures in the appendix become effective 202608061600 UTC.

3. DISPLACED THRESHOLD

| RWY | LAT | LONG | ELEV |
|------------|------------|-------------|-------------|
| RWY 19 | 191431.66S | 1464620.50E | 14FT |

4. PROCEDURE DIFFERENCES

- 4.1 The differences between VOR RWY 19 and VOR-T RWY 19 procedures include:
- Procedure name
 - DTHR location and elevation
 - Initial segment
 - Final approach track alignment
 - FAF altitude
 - SDF altitudes
 - Approach path slope
 - Distance/altitude table
 - Added caution note

5. CANCELLATION

- 5.1 This SUP will be cancelled when Stage 2 works are complete, expected to be on 18 December 2026.

6. DISTRIBUTION

- 6.1 Airservices Australia website only.

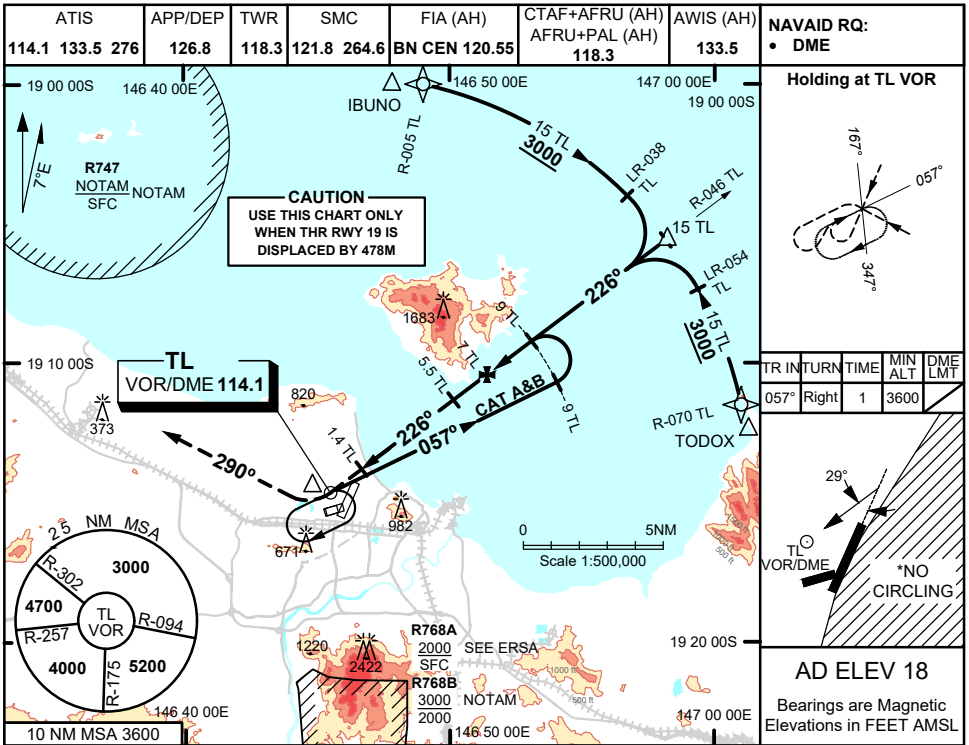
Appendix

1. VOR-T RWY 19

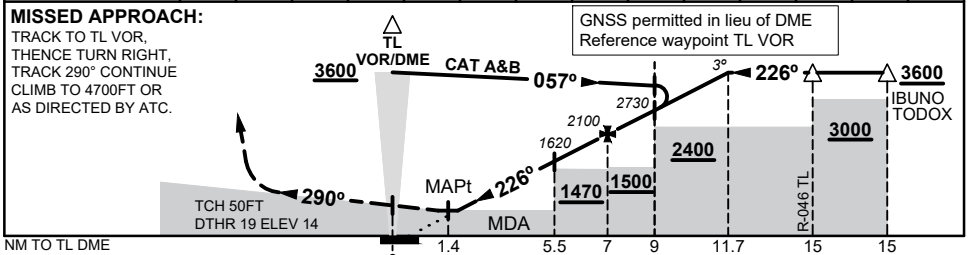
**APPENDIX 1
TO SUP H82/26**

TOWNSVILLE/TOWNSVILLE INTL, QLD (YBTL)

VOR-T RWY 19



| | | | | | | | | | | | | | |
|--------------------|-----|-----|------|------|------|------|------|------|------|------|------|------|--|
| NM TO TL DME | 2.1 | 3 | 4 | 5 | 5.5 | 6 | 7 | 8 | 9 | 10 | 11 | 11.7 | |
| ALT (3° APCH PATH) | 550 | 820 | 1140 | 1460 | 1620 | 1780 | 2100 | 2420 | 2730 | 3050 | 3370 | 3600 | |



NOTES

1. MAX IAS:
BASE TURN : 140KT
- *2. NO CIRCLING IN SECTOR EAST OF RWY 01/19.

| CATEGORY | A | B | C | D |
|-------------|-------------------|---|-----------------------|---|
| S-I VOR/DME | 550 (532 - 3.0) | | NOT APPLICABLE | |
| CIRCLING* | 1090 (1072 - 2.4) | | | |
| ALTERNATE | (1572 - 4.4) | | | |

Changes: NEW PROCEDURE

BTLV099-SUP