

**AIP SUPPLEMENT
(SUP)****AIRAC****H67/26****Effective: 202608051600 UTC**

AERONAUTICAL INFORMATION SERVICE,
AIRSERVICES AUSTRALIA, GPO BOX 367,
CANBERRA ACT 2601

For **DISTRIBUTION** queries, contact:
Email: aim_editorial@airservicesaustralia.com

For **CONTENT** queries regarding this SUP, contact:
Email: ifp@airservicesaustralia.com

GOLD COAST AERODROME (YBCG) NEW INSTRUMENT APPROACH PROCEDURES

1. INTRODUCTION

- 1.1 This AIP SUP implements permanent approach procedures for RWY 32 Gold Coast Aerodrome (YBCG) to be used during the yearly Pacific Airshow.
- 1.2 New RNP APCH and RNP AR approach procedures have been designed for use during the Pacific Airshow weekend. The amended approach procedures avoid the Pacific Airshow TRA. The RNP APCH approach procedure has the suffix 'T' and the RNP AR approach procedures have suffixes "R" and "S".
- 1.3 The RWY 32 approach procedures published in this SUP are to be used only when Pacific Airshow TRA are active. A NOTAM will be issued to indicate when these TRA are active. The existing RNP Z RWY 32, RNP Y RWY 32 (AR) and RNP X RWY 32 (AR) are not to be used when these TRA are active.
- 1.4 The existing STAR to RWY 32 have been amended to include the new procedure terminations.
- 1.5 Recommended coding for these procedures is available on request.

2. WAYPOINTS

2.1 New waypoints required for the new procedures:

Waypoint	Latitude	Longitude	
CG480	280845.18S	1532938.26E	
CG490	280436.91S	1533108.01E	
CG2SR	280237.63S	1533555.18E	
CG481	280717.93S	1533232.98E	RF Arc Centre

3. CANCELLATION

3.1 This SUP will be cancelled when it is incorporated into AIP DAP, expected to be in DAP Amendment 189, effective 26 NOV 2026.

4. DISTRIBUTION

4.1 Airservices Australia website only.

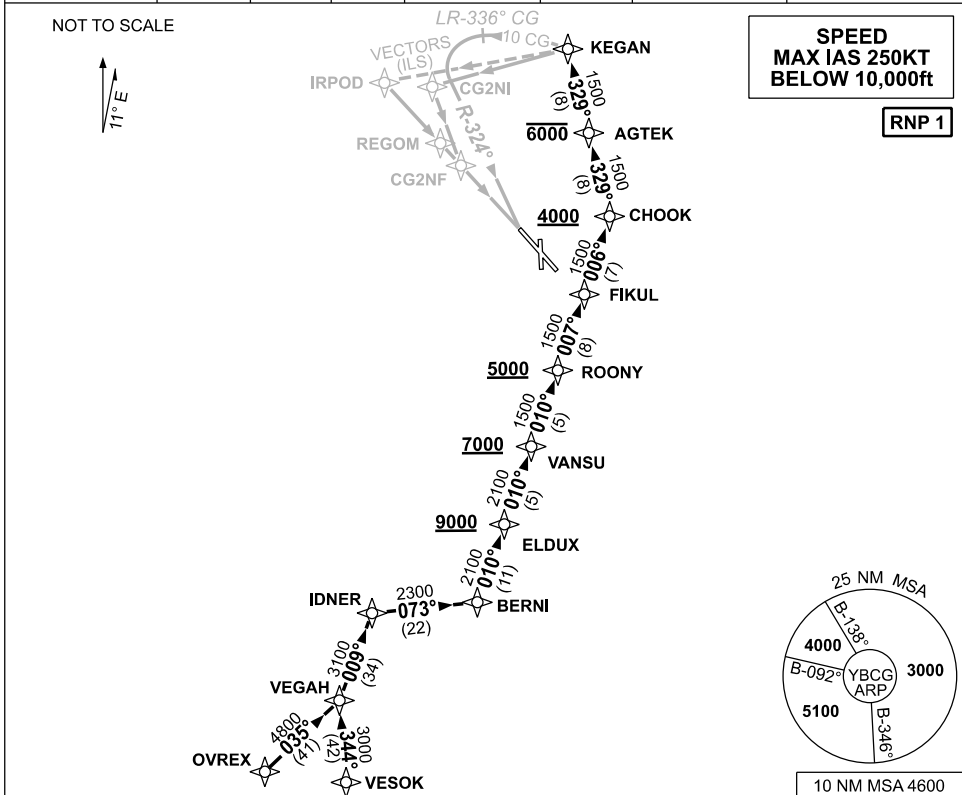
Appendices

1. BERNI FIVE ALPHA ARRIVAL (RNAV) RWY 14
2. BERNI FIVE ALPHA ARRIVAL (RNAV) RWY 32
3. BERNI FIVE VICTOR ARRIVAL (RNAV) RWY 14
4. BERNI FIVE VICTOR ARRIVAL (RNAV) RWY 32
5. BERNI FIVE YANKEE ARRIVAL (RNAV)
6. LAMSI FOUR ALPHA ARRIVAL (RNAV)
7. LAMSI FOUR YANKEE ARRIVAL (RNAV)
8. RNP T RWY 32
9. RNP R RWY 32 (AR)
10. RNP S RWY 32 (AR)

**APPENDIX 1
TO SUP H67/26**

**STANDARD ARRIVAL ROUTE (STAR)
BERNI FIVE ALPHA ARRIVAL (RNAV) RWY 14
GOLD COAST, QLD (YBCG)**

ATIS 112.3 (H24) 134.5 (TWR HR)	APP BN 123.5	TWR 118.7	SMC 121.8	FIA (AH) BN CEN 119.5	AWIS (AH) 134.5	CTAF+AFRU (AH) AFRU+PAL (AH) 118.7	Bearings are Magnetic Elevations in FEET AMSL
---------------------------------------	-----------------	--------------	--------------	--------------------------	--------------------	--	--



TRANSITIONS:

OVREX:

- Track 035° to VEGAH
- Turn LEFT track 009° to IDNER
- Turn RIGHT track 073° to BERNI

VESOK:

- Track 344° to VEGAH
- Turn RIGHT track 009° to IDNER
- Turn RIGHT track 073° to BERNI

THEN FOLLOW ARRIVAL INSTRUCTION

BERNI FIVE ALPHA ARRIVAL RWY 14

- From BERNI track 010° to ELDUX
Cross ELDUX AT or ABV 9000ft
- Track 010° to VANSU
Cross VANSU AT or ABV 7000ft
- Track 010° to ROONY
Cross ROONY AT or ABV 5000ft
- Turn LEFT track 007° to FIKUL
- Turn LEFT track 006° to CHOOK
Cross CHOOK AT or ABV 4000ft
- Turn LEFT track 329° to AGTEK
Cross AGTEK AT or BLW 6000ft
- Track 329° to KEGAN
- Track via RNP Z RWY 14, NDB or VOR RWY 14 or radar vectors for ILS-Z RWY 14 or LOC-Z RWY 14

COMMUNICATIONS FAILURE PROCEDURE

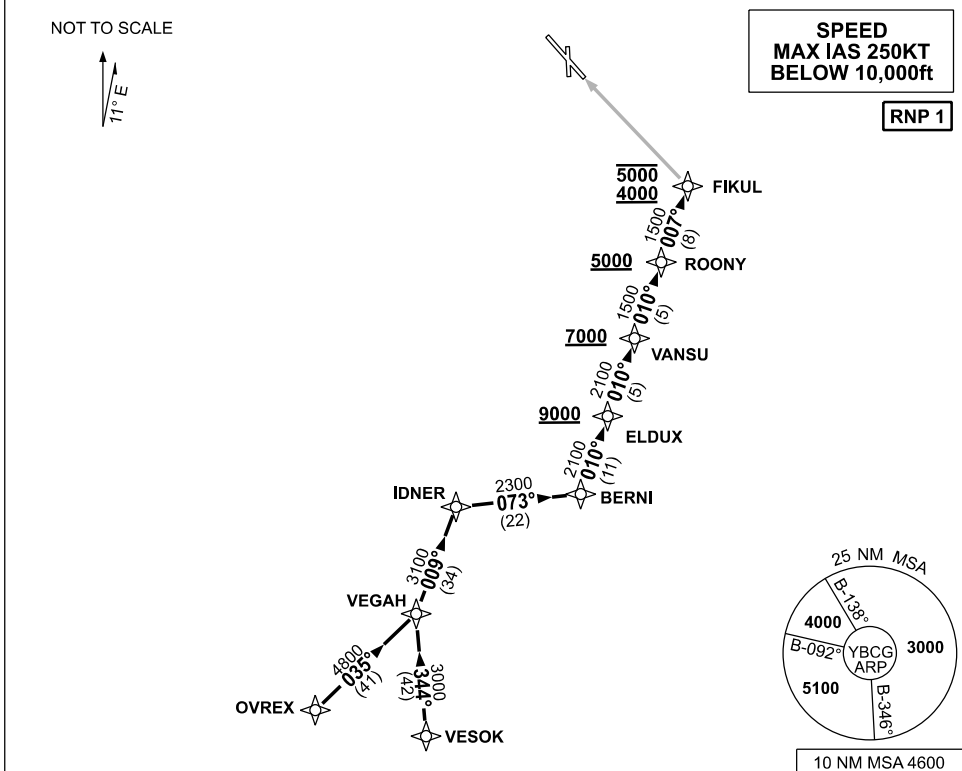
IF ABLE CTC GOLD COAST ATC ON TEL : 07 55995990

- Squawk 7600, comply with vertical navigation requirements, but not below MSA.
- Track via the latest STAR clearance to the nominated runway, then fly the most suitable approach in accordance with ERSA EMERG Section 1.5.

**APPENDIX 2
TO SUP H67/26**

**STANDARD ARRIVAL ROUTE (STAR)
BERNI FIVE ALPHA ARRIVAL (RNAV) RWY 32
GOLD COAST, QLD (YBCG)**

ATIS 112.3 (H24) 134.5 (TWR HR)	APP BN 123.5	TWR 118.7	SMC 121.8	FIA (AH) BN CEN 119.5	AWIS (AH) 134.5	CTAF+AFRU (AH) AFRU+PAL (AH) 118.7	Bearings are Magnetic Elevations in FEET AMSL
------------------------------------	-----------------	--------------	--------------	--------------------------	--------------------	--	--



TRANSITIONS:

OVREX:

- Track 035° to VEGAH
- Turn LEFT track 009° to IDNER
- Turn RIGHT track 073° to BERNI

VESOK:

- Track 344° to VEGAH
- Turn RIGHT track 009° to IDNER
- Turn RIGHT track 073° to BERNI

BERNI FIVE ALPHA ARRIVAL RWY 32

- From BERNI track 010° to ELDUX
Cross ELDUX AT or ABV 9000ft
- Track 010° to VANSU
Cross VANSU AT or ABV 7000ft
- Track 010° to ROONY
Cross ROONY AT or ABV 5000ft
- Turn LEFT track 007° to FIKUL
Cross FIKUL BTN 4000ft and 5000ft
- Track via RNP X RWY 32 (AR) or RNP Z RWY 32 or RNP S RWY 32 (AR) or RNP T RWY 32.

THEN FOLLOW ARRIVAL INSTRUCTION

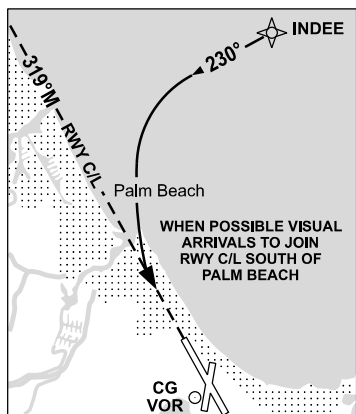
**COMMUNICATIONS FAILURE PROCEDURE
IF ABLE CTC GOLD COAST ATC ON TEL : 07 55995990**

- Squawk 7600, comply with vertical navigation requirements, but not below MSA.
- Track via the latest STAR clearance to the nominated runway, then fly the most suitable approach in accordance with ERS A EMERG Section 1.5.

**APPENDIX 3
TO SUP H67/26**

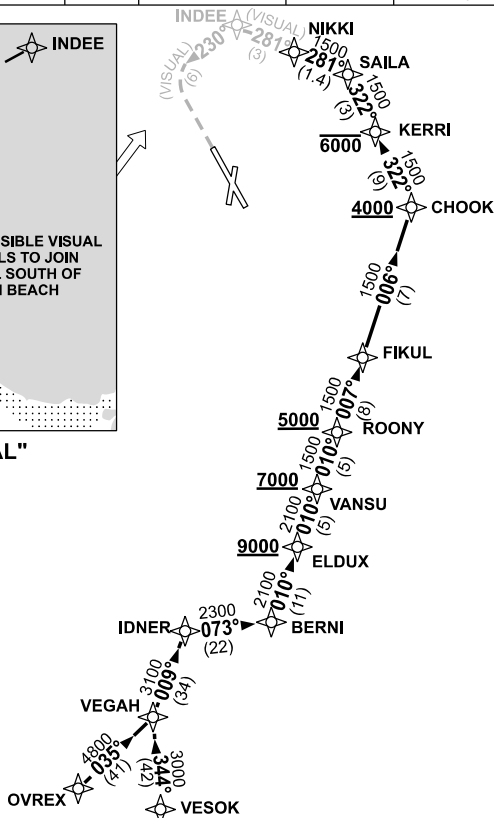
**STANDARD ARRIVAL ROUTE (STAR)
BERNI FIVE VICTOR ARRIVAL (RNAV) RWY 14
GOLD COAST, QLD (YBCG)**

ATIS 112.3 (H24) 134.5 (TWR HR)	APP BN 123.5	TWR 118.7	SMC 121.8	FIA (AH) BN CEN 119.5	AWIS (AH) 134.5	CTAF+AFRU (AH) AFRU+PAL (AH) 118.7	Bearings are Magnetic Elevations in FEET AMSL
---------------------------------------	-----------------	--------------	--------------	--------------------------	--------------------	--	--



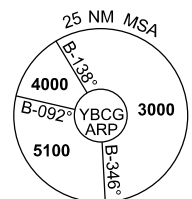
"RWY 14 VISUAL"

NOT TO SCALE



**SPEED
MAX IAS 250KT
BELOW 10,000ft**

RNP 1



10 NM MSA 4600

TRANSITIONS:

OVREX:

- Track 035° to VEGAH
- Turn LEFT track 009° to IDNER
- Turn RIGHT track 073° to BERNI

VESOK:

- Track 344° to VEGAH
- Turn RIGHT track 009° to IDNER
- Turn RIGHT track 073° to BERNI

THEN FOLLOW ARRIVAL INSTRUCTION

BERNI FIVE VICTOR ARRIVAL RWY14

- From BERNI track 010° to ELDUX
Cross ELDUX AT or ABV 9000ft
- Track 010° to VANSU
Cross VANSU AT or ABV 7000ft
- Track 010° to ROONY
Cross ROONY AT or ABV 5000ft
- Turn LEFT track 007° to FIKUL
- Turn LEFT track 006° to CHOOK
Cross CHOOK AT or ABV 4000ft
- Turn LEFT track 322° to KERRI
Cross KERRI AT or BLW 6000ft
- Track 322° to SAILA
- Turn LEFT track 281° to NIKKI,
- Track 281° VISUAL to INDEE
- Turn LEFT track 230° to intercept 3NM final RWY 14 (RWY 14 VISUAL)

COMMUNICATIONS FAILURE PROCEDURE

IF ABLE CTC GOLD COAST ATC ON TEL : 07 55995990

- Squawk 7600, comply with vertical navigation requirements, but not below MSA.
- Track via the latest STAR clearance to the nominated runway, then fly the most suitable approach in accordance with ERS A EMERG Section 1.5.

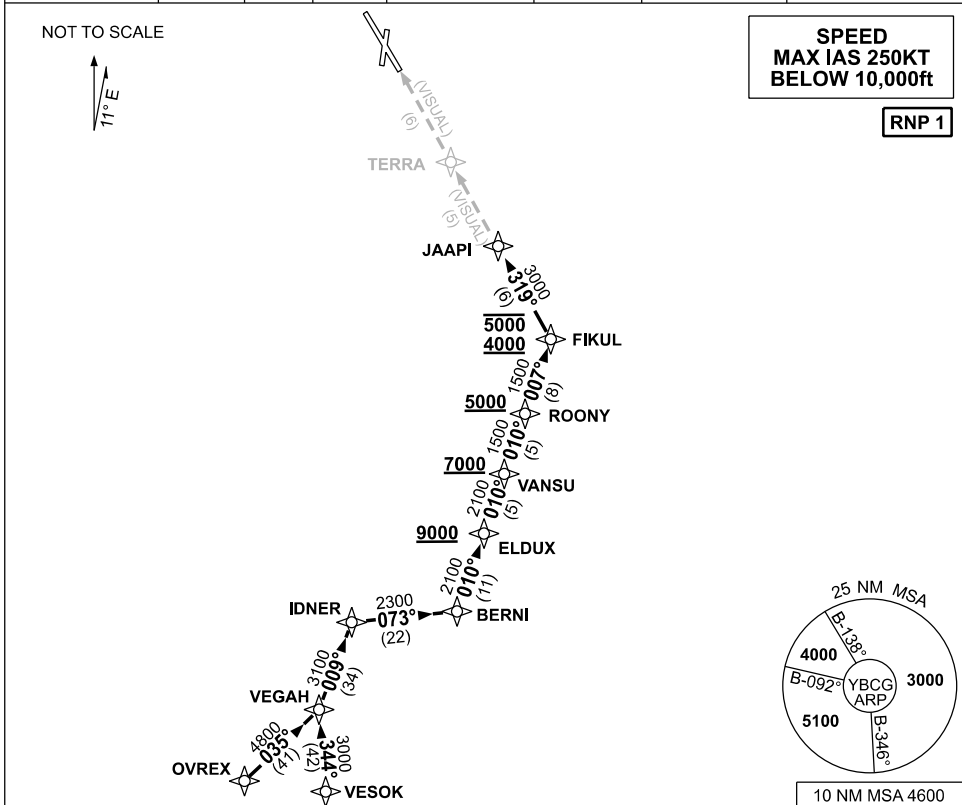
Changes: VALIDITY INDICATOR.

BCGSR07-SUP

**APPENDIX 4
TO SUP H67/26**

**STANDARD ARRIVAL ROUTE (STAR)
BERNI FIVE VICTOR ARRIVAL (RNAV) RWY 32
GOLD COAST, QLD (YBCG)**

ATIS 112.3 (H24) 134.5 (TWR HR)	APP BN 123.5	TWR 118.7	SMC 121.8	FIA (AH) BN CEN 119.5	AWIS (AH) 134.5	CTAF+AFRU (AH) AFRU+PAL (AH) 118.7	Bearings are Magnetic Elevations in FEET AMSL
------------------------------------	-----------------	--------------	--------------	--------------------------	--------------------	--	--



TRANSITIONS:

OVREX:

- Track 035° to VEGAH
- Turn LEFT track 009° to IDNER
- Turn RIGHT track 073° to BERNI

VESOK:

- Track 344° to VEGAH
- Turn RIGHT track 009° to IDNER
- Turn RIGHT track 073° to BERNI

THEN FOLLOW ARRIVAL INSTRUCTION

BERNI FIVE VICTOR ARRIVAL RWY 32

- From BERNI track 010° to ELDUX
Cross ELDUX AT or ABV 9000ft
- Track 010° to VANSU
Cross VANSU AT or ABV 7000ft
- Track 010° to ROONY
Cross ROONY AT or ABV 5000ft
- Turn LEFT track 007° to FIKUL
Cross FIKUL BTN 4000ft and 5000ft
- Turn LEFT, track 319° to JAAPI
- Track VISUAL to TERRA
- Report RWY in sight for approach instructions

COMMUNICATIONS FAILURE PROCEDURE

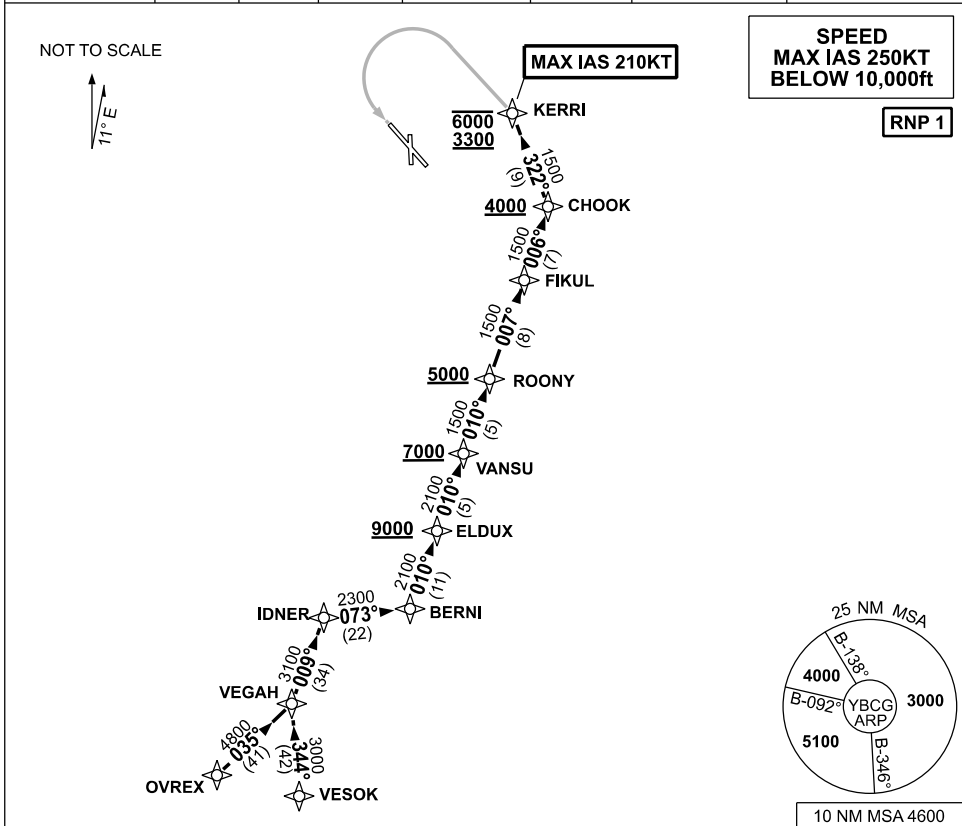
IF ABLE CTC GOLD COAST ATC ON TEL : 07 55995990

- Squawk 7600, comply with vertical navigation requirements, but not below MSA.
- Track via the latest STAR clearance to the nominated runway, then fly the most suitable approach in accordance with ERS A EMERG Section 1.5.

**APPENDIX 5
TO SUP H67/26**

**STANDARD ARRIVAL ROUTE (STAR)
BERNI FIVE YANKEE ARRIVAL (RNAV)
GOLD COAST, QLD (YBCG)**

ATIS 112.3 (H24) 134.5 (TWR HR)	APP BN 123.5	TWR 118.7	SMC 121.8	FIA (AH) BN CEN 119.5	AWIS (AH) 134.5	CTAF+AFRU (AH) AFRU+PAL (AH) 118.7	Bearings are Magnetic Elevations in FEET AMSL
---------------------------------------	-----------------	--------------	--------------	--------------------------	--------------------	--	--



TRANSITIONS:

OVREX:

- Track 035° to VEGAH
- Turn LEFT track 009° to IDNER
- Turn RIGHT track 073° to BERNI

VESOK:

- Track 344° to VEGAH
- Turn RIGHT track 009° to IDNER
- Turn RIGHT track 073° to BERNI

THEN FOLLOW ARRIVAL INSTRUCTION

BERNI FIVE YANKEE ARRIVAL RWY 14

- From BERNI track 010° to ELDUX
Cross ELDUX AT or ABV 9000ft
- Track 010° to VANSU
Cross VANSU AT or ABV 7000ft
- Track 010° to ROONY
Cross ROONY AT or ABV 5000ft
- Turn LEFT track 007° to FIKUL
- Turn LEFT track 006° to CHOOK
Cross CHOOK AT or ABV 4000ft
- Turn LEFT track 322° to KERRI
Cross KERRI BTN 3300ft and 6000ft
MAX IAS 210KT from KERRI
- Track via RNP Y RWY 14 (AR)

COMMUNICATIONS FAILURE PROCEDURE

IF ABLE CTC GOLD COAST ATC ON TEL : 07 55995990

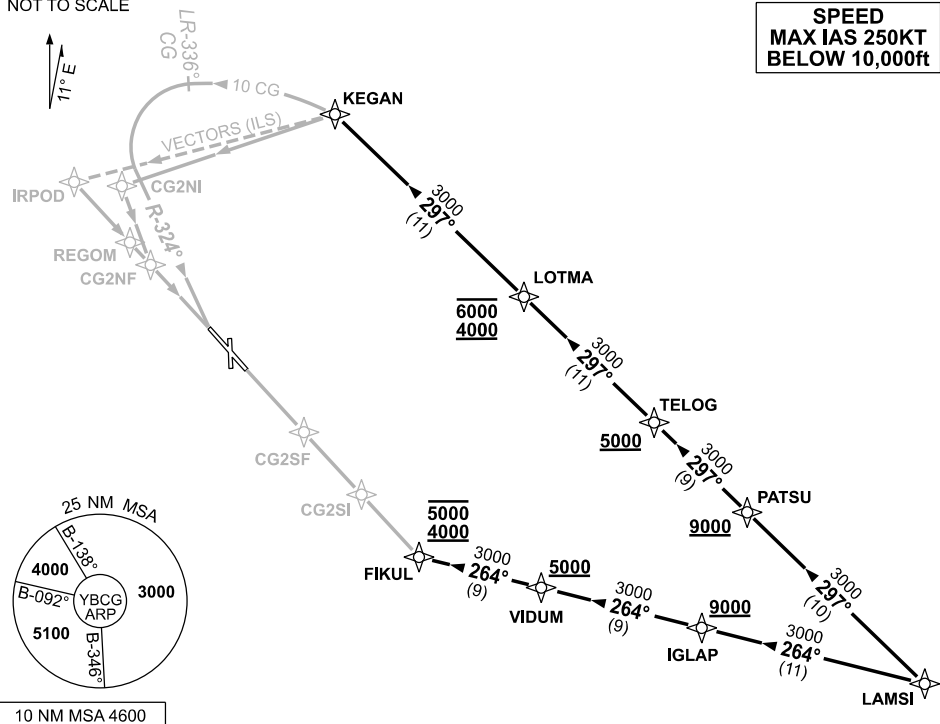
- Squawk 7600, comply with vertical navigation requirements, but not below MSA.
- Track via the latest STAR clearance to the nominated runway, then fly the most suitable approach in accordance with ERS A EMERG Section 1.5.

**APPENDIX 6
TO SUP H67/26**

**STANDARD ARRIVAL ROUTE (STAR)
LAMSI FOUR ALPHA ARRIVAL (RNAV)
GOLD COAST, QLD (YBCG)**

ATIS 112.3 134.5 (H24) (TWR HR)	APP BN 123.5	TWR 118.7 (AFRU+PAL)	SMC 121.8	ACD 128.75	AWIS (AH) 134.5	Bearings are Magnetic Elevations in FEET AMSL
---------------------------------------	-----------------	----------------------------	--------------	---------------	--------------------	--

NOT TO SCALE



LAMSI FOUR ALPHA ARRIVAL

RWY 14:

- From LAMSI track 297° to PATSU
Cross PATSU AT or ABV 9000ft
- Track 297° to TELOG
Cross TELOG AT or ABV 5000ft
- Track 297° to LOTMA
Cross LOTMA BTN 4000ft AND 6000ft
- Track 297° to KEGAN
- At KEGAN track via RNP Z RWY 14, NDB or VOR RWY 14 or radar vectors for ILS-Z RWY 14 or LOC-Z RWY 14.

RWY 32:

- From LAMSI track 264° to IGLAP
Cross IGLAP AT or ABV 9000ft
- Track 264° to VIDUM
Cross VIDUM AT or ABV 5000ft
- Track 264° to FIKUL.
Cross FIKUL BTN 4000ft and 5000ft
- At FIKUL track via RNP X RWY 32 (AR) or RNP Z RWY 32 or RNP S RWY 32 (AR) or RNP T RWY 32.

**COMMUNICATIONS FAILURE PROCEDURE
IF ABLE CTC GOLD COAST ATC ON TEL : 07 55995990**

- Squawk 7600, comply with vertical navigation requirements, but not below MSA.
- Track via the latest STAR clearance to the nominated runway, then fly the most suitable approach in accordance with ERSA EMERG Section 1.5.

Changes: PROC TERMINATION.

BCGSR03-SUP

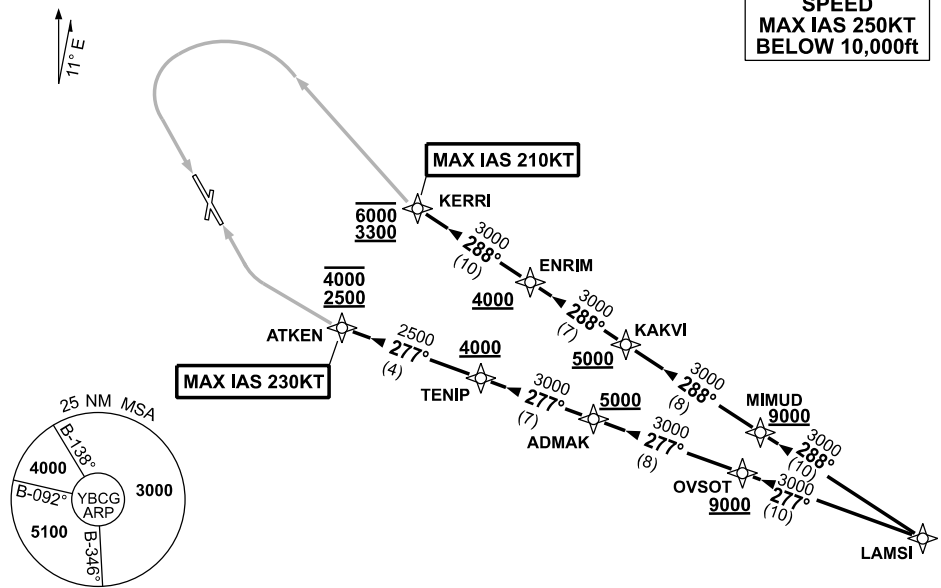
**APPENDIX 7
TO SUP H67/26**

**STANDARD ARRIVAL ROUTE (STAR)
LAMSI FOUR YANKEE ARRIVAL (RNAV)
GOLD COAST, QLD (YBCG)**

ATIS 112.3 134.5 (H24) (TWR HR)	APP BN 123.5	TWR 118.7 (AFRU+PAL)	SMC 121.8	ACD 128.75	AWIS (AH) 134.5	Bearings are Magnetic Elevations in FEET AMSL
---------------------------------------	-----------------	----------------------------	--------------	---------------	--------------------	--

NOT TO SCALE

**SPEED
MAX IAS 250KT
BELOW 10,000ft**



10 NM MSA 4600

LAMSI FOUR YANKEE ARRIVAL

RWY 14:

- From LAMSI track 288° to MIMUD.
Cross MIMUD AT or ABV 9000ft.
- Track 288° to KAKVI.
Cross KAKVI AT or ABV 5000ft.
- Track 288° to ENRIM.
Cross ENRIM AT or ABV 4000ft.
- Track 288° to KERRI.
Cross KERRI BTN 3300ft and 6000ft.
MAX IAS 210KT from KERRI
- At KERRI track via RNP Y RWY 14 (AR)

RWY 32:

- From LAMSI track 277° to OVSOT.
Cross OVSOT AT or ABV 9000ft.
- Track 277° to ADMAK.
Cross ADMAK AT or ABV 5000ft.
- Track 277° to TENIP.
Cross TENIP AT or ABV 4000ft.
- Track 277° to ATKEN.
Cross ATKEN BTN 2500ft and 4000ft.
MAX IAS 230KT from ATKEN
- At ATKEN track via RNP Y RWY 32 (AR) or RNP R RWY 32 (AR).

**COMMUNICATIONS FAILURE PROCEDURE
IF ABLE CTC GOLD COAST ATC ON TEL : 07 55995990**

- Squawk 7600, comply with vertical navigation requirements, but not below MSA.
- Track via the latest STAR clearance to the nominated runway, then fly the most suitable approach in accordance with ERSA EMERG Section 1.5.

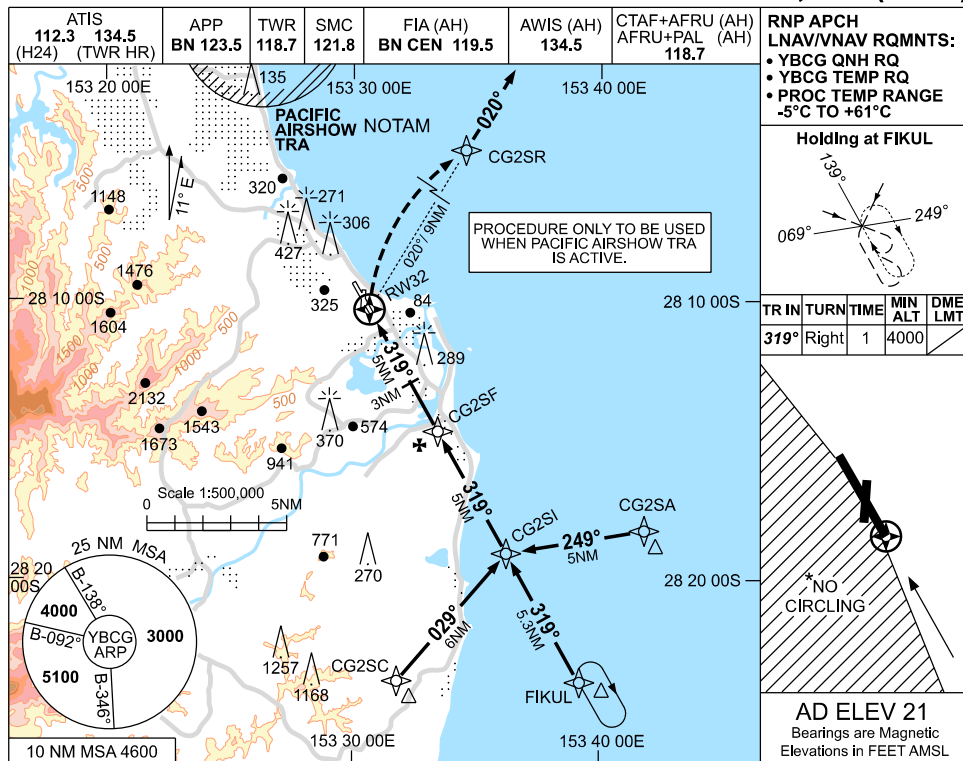
Changes: PROC TERMINATION.

BCGSR04-SUP

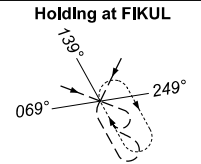
**APPENDIX 8
TO SUP H67/26**

USE QNH

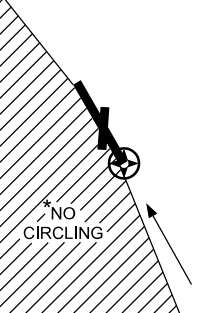
**RNP T RWY 32
GOLD COAST, QLD (YBCG)**



**RNP APCH
LNAV/VNAV RQMNTS:**
 • YBCG QNH RQ
 • YBCG TEMP RQ
 • PROC TEMP RANGE
 -5°C TO +61°C

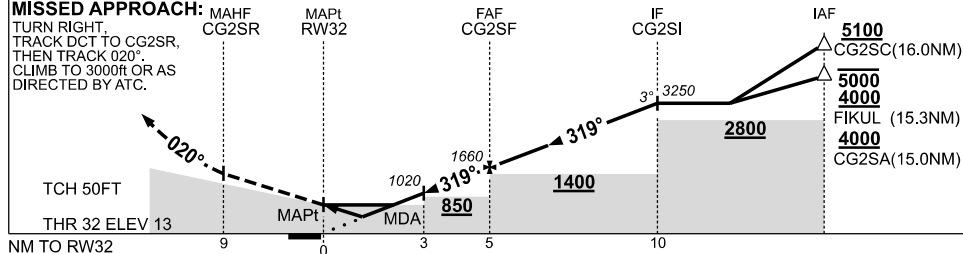


TR IN	TURN	TIME	MIN ALT	DME LMT
319°	Right	1	4000	



AD ELEV 21
 Bearings are Magnetic
 Elevations in FEET AMSL

NM TO NEXT WPT	RW32	1.4	2.1	3	4	CG2SF	1	2	3	4	CG2SI		
ALT (3° APCH PATH)		510	720	1020	1340	1660	1970	2290	2610	2930	3250		



NOTES

- MAX IAS:
INITIAL : 210KT.
- NO CIRCLING WEST OF RWY 14 / 32.
- COLOR: SEE SPEC NOTICES.

CATEGORY	A	B	C	D
LNAV/VNAV		510 (497-2.8)		
LNAV		720 (707-4.0)		
CIRCLING *	860 (839-2.4)		960 (939-4.0)	960 (939-5.0)
ALTERNATE	(1339-4.4)		(1439-6.0)	(1439-7.0)

Changes: NEW PROC.

BCGGN03-SUP

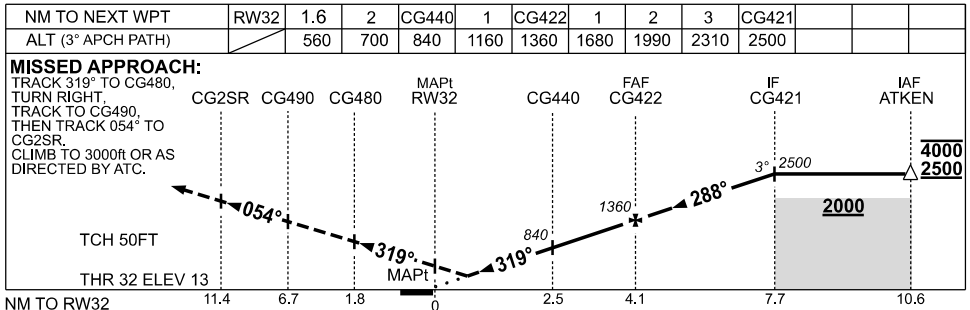
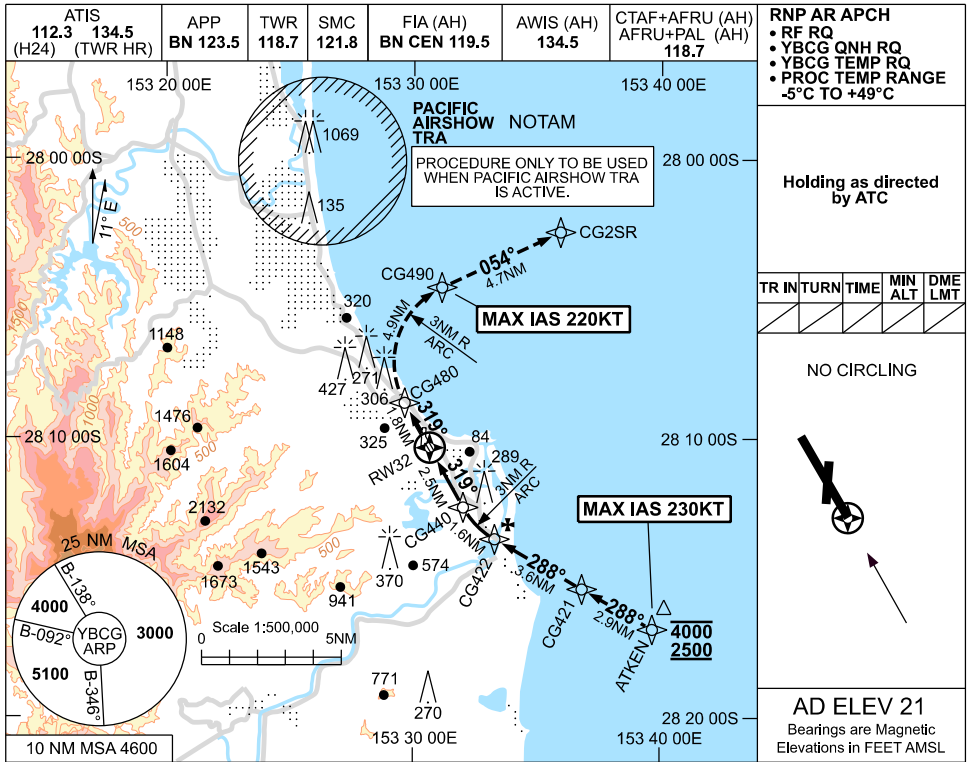
FOR CASA APPROVED OPERATORS ONLY

APPENDIX 9
TO SUP H67/26

USE QNH

RNP R RWY 32 (AR)

GOLD COAST, QLD (YBCG)



NOTES

CATEGORY	A	B	C	D
RNP 0.3	560 (547-3.1)			
CIRCLING	NOT AUTHORISED			
ALTERNATE	(1239-4.4)		(1339-6.0)	(1339-7.0)

1. MAX IAS:
 ATKEN : 230KT,
 CG490 : 220KT.
2. COLOUR: SEE
 SPEC NOTICES.

Changes: NEW PROC.

BCGGN04-SUP

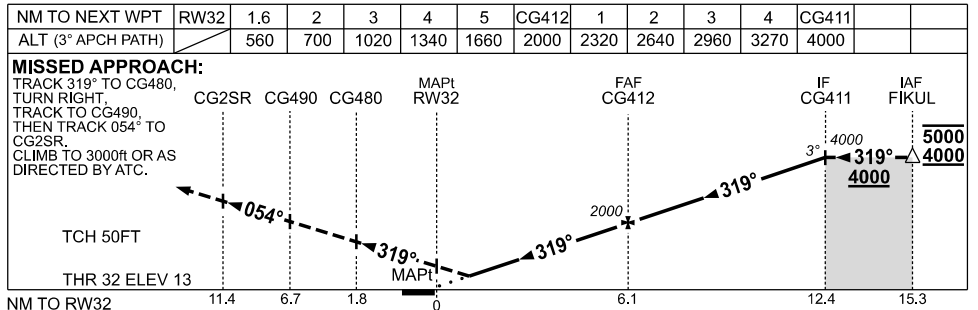
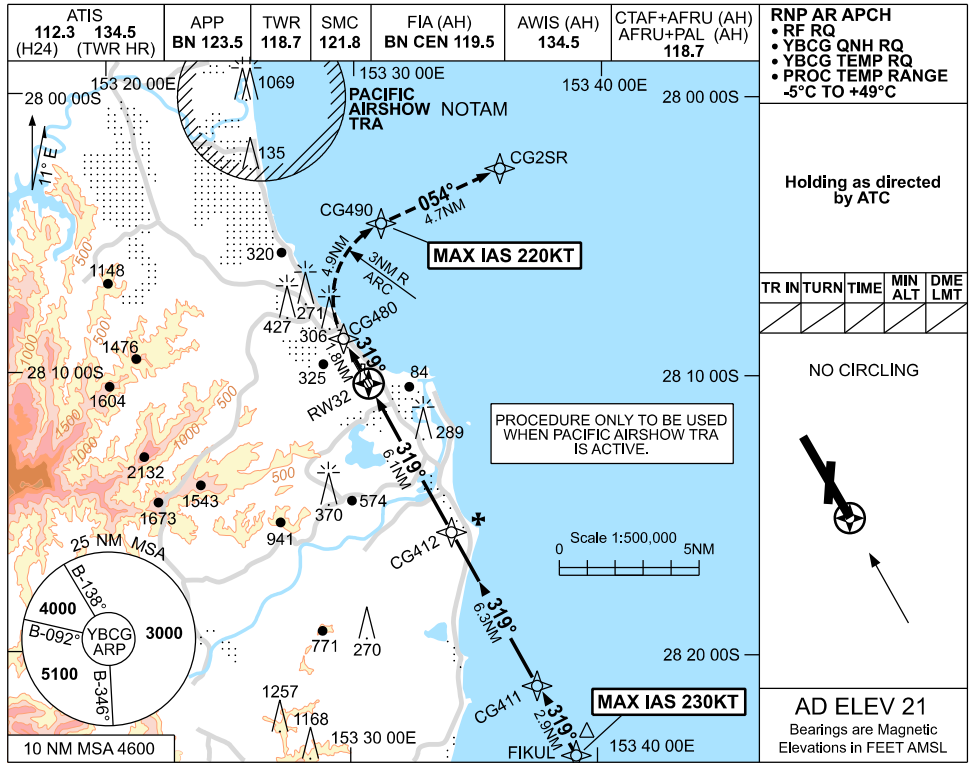
FOR CASA APPROVED OPERATORS ONLY

USE QNH

RNP S RWY 32 (AR)

APPENDIX 10
TO SUP H67/26

GOLD COAST, QLD (YBCG)



NOTES

CATEGORY	A	B	C	D
RNP 0.3	560 (547-3.1)			
CIRCLING	NOT AUTHORISED			
ALTERNATE	(1239-4.4)	(1339-6.0)	(1339-7.0)	

1. MAX IAS:
 FIKUL : 230KT,
 CG490 : 220KT.
2. COLOUR: SEE SPEC NOTICES.

Changes: NEW PROC.

BCGGN05-SUP