

**AIP SUPPLEMENT
(SUP)****H14/26****Effective: 202602011600 UTC**

AERONAUTICAL INFORMATION SERVICE,
AIRSERVICES AUSTRALIA, GPO BOX 367,
CANBERRA ACT 2601

For **DISTRIBUTION** queries, contact:
Email: aim.editorial@airservicesaustralia.com

For **CONTENT** queries regarding this SUP, contact:
Email: adf.airspace@defence.gov.au Phone: 02 6128 4858

**TRA 'WOOLGANGI', SOUTH AUSTRALIA
02 FEBRUARY - 30 JUNE 2026****1. INTRODUCTION**

- 1.1 This AIP SUP cancels and replaces SUP H06/26 with an update to para 2.2.
- 1.2 Defence flying activities will be conducted in the Flinders Ranges region over the period 02 February – 30 June 2026.
- 1.3 This AIP SUP describes the airspace, timings, access and procedures associated with these activities.

2. AIRSPACE

- 2.1 Airspace users should refer to YMMM area NOTAM to confirm activation timings of the Temporary Restricted Area (TRA).
- 2.2 The following TRA is established:

YMMM/TRA 'WOOLGANGI'**CONDITIONAL STATUS: RA2****MILITARY FLYING****LATERAL LIMITS:** 331740S 1392532E - 331809S 1394202E - 334136S
1394159E - 333813S 1391240E - 331740S 1392532E**VERTICAL LIMITS:** SFC - NOTAM (MAX 6000FT)**HOURS OF ACTIVITY:** NOTAM**CONTROLLING AUTHORITY:** ADVANCED STRATEGIC CAPABILITIES
ACCELERATOR (ASCA)

2.3 TRA ‘WOOLGANGI’ is planned to be activated over the following periods:

| Date (Local) | Time (Local) |
|-----------------|------------------------|
| 02 – 06 FEB | Daylight Hours (HJ) |
| 02 – 06 MAR | |
| 30 MAR – 03 APR | |
| 27 APR – 01 MAY | |
| 25 – 29 MAY | |
| 22 – 26 JUN | |

2.4 NOTAM

2.4.1 TRA (YMMM) NOTAM shall be issued to confirm activation dates and timings.

2.4.2 NOTAM will be published at least 24 hours prior to activation.

2.5 General airspace enquiries prior to activation period can be made to the Joint Airspace Control Cell on (02) 6128 4857 during normal business hours (AEST) or via email adf.airspace@defence.gov.au.

2.6 During activation periods, contact ASCA on 0488 787 711 (primary) or 0488 787 000 (secondary) or via email asca.missions@defence.gov.au.

3. ACCESS TO EXERCISE AIRSPACE

3.1 Access to the TRA by non-participant aircraft will generally not be available except for:

- a) Aircraft operating in the preservation of life or property (MEDEVAC, FFR, POL, SAR)
- b) Aircraft with a declared emergency
- c) Aircraft that pre-arrange clearance with the controlling authority by phone prior to take-off.

3.2 No ATS will be provided to aircraft requiring transit of TRA ‘WOOLGANGI’.

3.3 Should a flight noted above require transit of TRA ‘WOOLGANGI’, contact with the controlling authority before departure is required to ensure that transit is available. When airborne, contact is to be made with the controlling authority on 126.7 MHz to request transit clearance prior to entry.

4. CANCELLATION

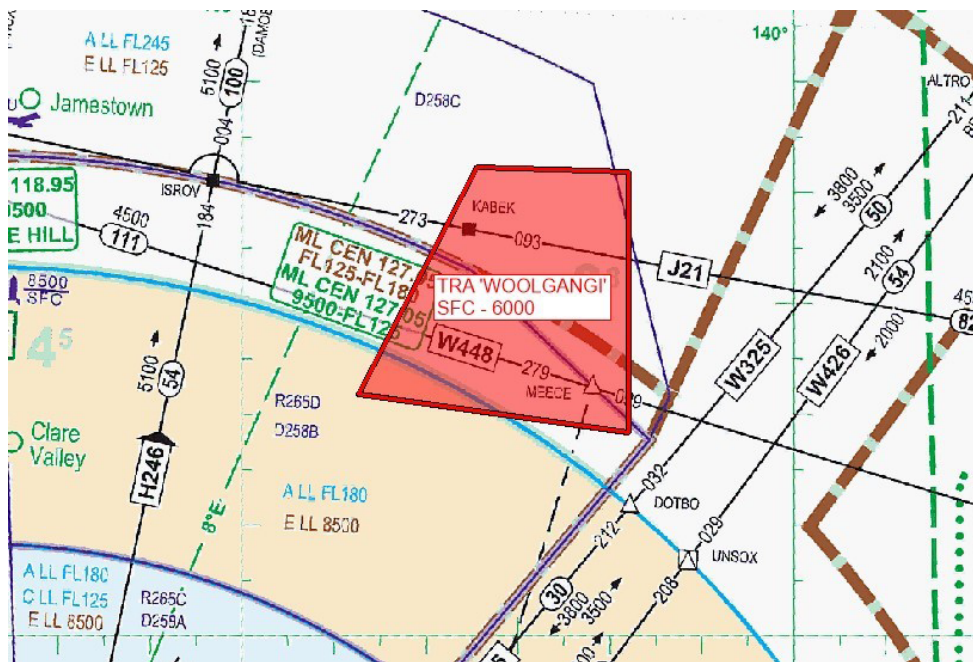
- 4.1 This SUP self-cancels at 202606301430 UTC.

5. DISTRIBUTION

- 5.1 Airservices Australia website only.

Appendices

1. TRA 'WOOLGANGI' - ENR Low
2. TRA 'WOOLGANGI' - Low Flying Chart Day



2. TRA 'WOOLGANGI' - Low Flying Chart Day

