

**AIP SUPPLEMENT
(SUP)****H12/26****Effective: 202602130200 UTC**

AERONAUTICAL INFORMATION SERVICE,
AIRSERVICES AUSTRALIA, GPO BOX 367,
CANBERRA ACT 2601

For **DISTRIBUTION** queries, contact:
Email: aim.editorial@airservicesaustralia.com

For **CONTENT** queries regarding this SUP, contact:
Email: adf.airspace@defence.gov.au Phone: 02 6128 4858

**MILITARY EXERCISE “DIAMOND SEAS 2026”,
QUEENSLAND, 13 – 14 FEBRUARY 2026****1. INTRODUCTION**

- 1.1 Elements of the Royal Australian Air Force will be conducting Exercise ‘DIAMOND SEAS 2026’ (DSS26) over the period 13 – 14 February 2026.
- 1.2 This AIP SUP describes the airspace, timings, diversion routes and procedures associated with this activity.

2. AIRSPACE

- 2.1 Airspace users should refer to Amberley Airspace (AMX and AWX) and Brisbane FIR (YBBB) NOTAM to confirm vertical limits and activation timings, for permanent airspace and temporary restricted areas.
- 2.2 During the activity period all the following AMX and AWX permanent SUA will be activated with vertical limits and timings published by NOTAM:

IDENT	VERTICAL LIMITS (AMSL)	HOURS
D621ABCD	SFC - 10000	NOTAM
R625A	1500 - 8500	NOTAM
R625B	2500 - 8500	NOTAM
R625C	4500 - 8500	NOTAM
R625D	8500 – FL210	NOTAM
R639ABCD	10000 – FL600	NOTAM

2.3 The following Temporary Restricted Area (TRA) has been established to facilitate DSS26 in the vicinity of RAAF Amberley:

YBBB/TRA ‘NIMBUS’

CONDITIONAL STATUS: RA2

MILITARY FLYING

LATERAL LIMITS: 265722S 1485538E – 265738S 1494403E – 281000S 1494800E – 291542S 1500721E – 291523S 1492858E – 285713S 1485340E – 265722S 1485538E

VERTICAL LIMITS: 10000 – FL600

HOURS OF ACTIVITY: NOTAM

CONTROLLING AUTHORITY: FLTCDR 452SQN AMBERLEY

2.4 Temporary SUA activation

2.4.1 TRA airspace activation periods are expected to be in accordance with the following table:

Airspace	Dates (UTC)	Times
TRA ‘NIMBUS’	13 FEB 26	Up to 2 x 4 hour windows promulgated via NOTAM

2.5 Non-activity airspace activation

2.5.1 AMX and AWX permanent airspace will be activated for non-exercise activities in accordance with normal NOTAM requirements.

2.6 NOTAM

2.6.1 Airspace users should refer to both local area (AMX and AWX) and Brisbane FIR (YBBB) NOTAM to confirm vertical limits and activation timings for permanent and temporary SUA. Timings may be amended or deactivated by NOTAM at short notice.

2.7 Activation of TRA ‘NIMBUS’ in support of DSS26 will specifically refer to this SUP in NOTAM.

2.8 NOTAM will be issued at least 8 hours prior to activation.

2.9 General airspace enquiries prior to exercise start can be made to the Joint Airspace Control Cell on (02) 6128 4856 during normal business hours or via email adf.airspace@defence.gov.au.

- 2.10 During execution, contact the 452SQN Amberley Flight Approach Supervisor on (07) 5361 3349.

3. MILITARY AIRCRAFT OPERATIONS

3.1 Noise sensitive areas

- 3.1.1 Military aircraft will plan to avoid known sensitive areas and comply with Fly Neighbourly Advice.

4. ACCESS TO EXERCISE AIRSPACE

- 4.1 Access through active restricted areas described in this SUP, by non-exercise aircraft, is not available except for:
- a) Aircraft operating in the preservation of life or property (SAR, MED, POL, FFR), and
 - b) Aircraft with a declared emergency.
- 4.2 Should priority transits IAW with para 4.1 be required, airways clearance must be obtained from the Controlling Authority prior to entry.
- 4.3 No ATS will be provided to civilian aircraft requiring emergency transit of Exercise Airspace.

5. DIVERSION ROUTES

- 5.1 The following Air Routes are affected by the restricted areas in this AIP SUP: H652, Q165, Q238, W353, W356, W655, Y94, Y153, Y161, Z418.
- a) Pilots are not to flight plan via diversion routes promulgated in *ERSA GEN – FPR*.
 - b) Please direct all enquiries relating to diversion routes to: atm.director@airservicesaustralia.com
 - c) Pilots operating at levels that would not remain vertically clear of restricted areas shall flight plan via the following diversion routes.

Affected route	H652
Use diversion route	H652 ALAXU ROM SGE ESLOM GOPVO OVNOM H652
Purpose	Separation from hazardous activities in TRA Nimbus

Affected route	Q165 (and W655 to Q165)
Use diversion route	Above A100 OVNOM IGDIT BINAG UBGAN ROM Q165 At or below A100 Plan: Q165 at or below A100 until ROM.
Purpose	Separation from hazardous activities in TRA Nimbus. Segregation from southbound diversion routes.

Affected route	Q238
Use diversion route	LASUD H530 KABIX Q141 DUPUG
Purpose	Segregation from southbound diversion routes.

Affected route	W353
Use diversion route	Plan W353 at or below A100 between SGE - HUUGO
Purpose	Separation from hazardous activities in TRA Nimbus

Affected route	W356
Use diversion route	<u>Above A100 (eastbound)</u> W356 RIRSA RILGO OK W356 <u>Above A100 (westbound)</u> W356 OK RILGO RIRSA W356 <u>At or below A100</u> Plan: W356
Purpose	Separation from hazardous activities in TRA Nimbus

Affected route	W655
Use diversion route	<u>Above A100</u> See diversion route for Q165 (and W655 to Q165) <u>At or below A100</u> Plan: W655
Purpose	Separation from hazardous activities in TRA Nimbus. Segregation from southbound diversion routes.

Affected route	Y94
Use diversion route	LEC T33 ANROM Y62 IGDIT Y27 BN
Purpose	Separation from hazardous activities in TRA Nimbus

Affected route	Y153
Use diversion route	Y153 GOBAR DUPUG SGE ESLOM GOPVO OVNOM
Purpose	Separation from hazardous activities in TRA Nimbus

Affected route	Y161
Use diversion route	Y161 SGE ESLOM GOPVO OVNOM
Purpose	Separation from hazardous activities in TRA Nimbus

Affected route	Z418
Use diversion route	Plan: Z418 at or below A100 between COLLY - OK
Purpose	Separation from hazardous activities in TRA Nimbus

6. CANCELLATION

6.1 This SUP self-cancels at 202602132000 UTC.

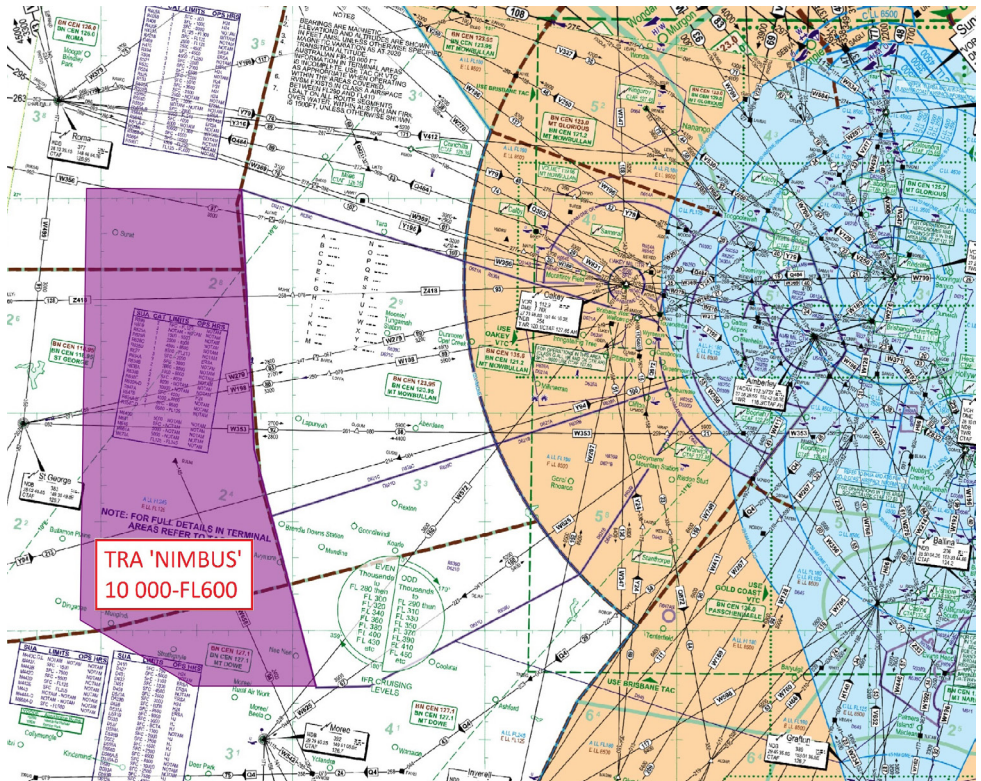
7. DISTRIBUTION

7.1 Airservices Australia website only.

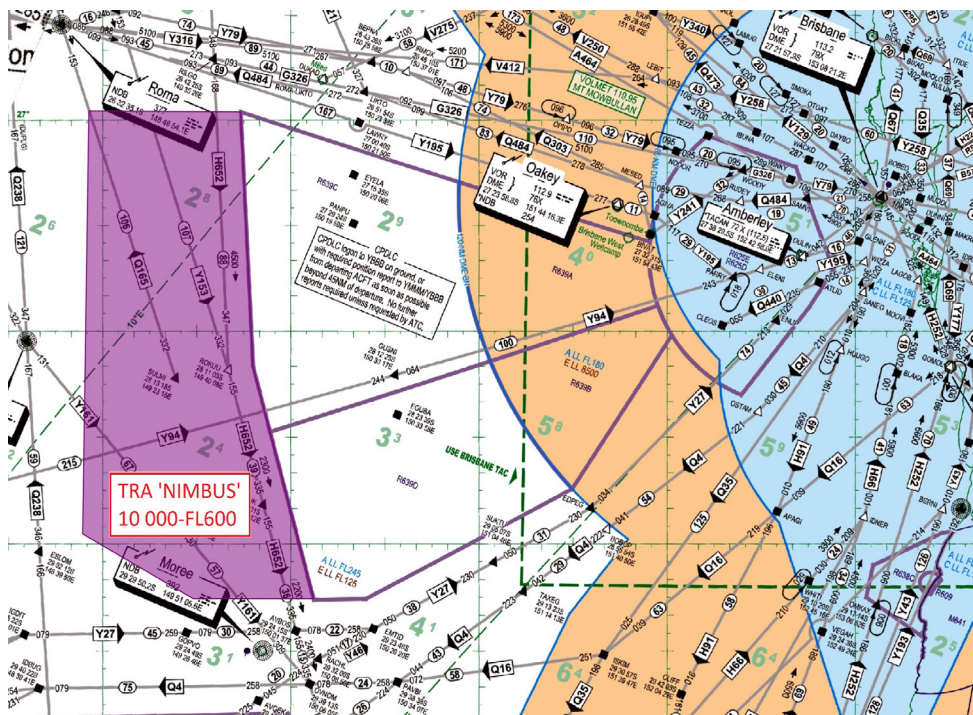
Appendices

1. DSS26 Temporary Airspace – Enroute Chart Low
2. DSS26 Temporary Airspace – Enroute Chart High
3. Airspace Diversion Routes

1. DSS26 Temporary Airspace – Enroute Chart Low



2. DSS26 Temporary Airspace – Enroute Chart High



3. Airspace Diversion Routes

