

**AIP SUPPLEMENT
(SUP)****AIRAC****H01/26****Effective: 202601211600 UTC**

AERONAUTICAL INFORMATION SERVICE,
AIRSERVICES AUSTRALIA, GPO BOX 367,
CANBERRA ACT 2601

For **DISTRIBUTION** queries, contact:
Email: aim_editorial@airservicesaustralia.com

For **CONTENT** queries regarding this SUP, contact:
Email: maintenance@globalairspaceolutions.com

TOWNSVILLE/TOWNSVILLE INTL AERODROME (YBTL) DAP FOR TEMPORARY DISPLACED THRESHOLD RWY 19 - STAGE 2 - 8

1. INTRODUCTION

- 1.1 This AIP SUP publishes revised procedure for use during the displaced threshold of RWY 19 at Townsville/Townsville INTL Aerodrome (YBTL).
- 1.2 The procedure published in this SUP are to be used only when RWY 19 THR is displaced by 478M. A NOTAM will be issued to indicate when the threshold is displaced.
- 1.3 RNP T RWY 19 has incorporated the THR RWY 19 displacement of 478M.
- 1.4 During Stage 2 - 8, VOR RWY 19 approach will be authorised to circling minima only and the RNP Z RWY 19 will not be available. These changes will also be promulgated by NOTAM.
- 1.5 Temporary changes to RWY 19 are published by an additional SUP, available online: www.airservicesaustralia.com/aip/aip.asp.

2. IMPLEMENTATION

- 2.1 The procedure in the appendix becomes effective 202601211600 UTC.

3. RECOMMENDED CODING

- 3.1 Recommended coding available on request.

4. DISPLACED THRESHOLD

RWY	LAT	LONG	ELEV
19	191431.66S	1464620.50E	14 FT

5. PROCEDURE DIFFERENCES

5.1 The differences between RNP Z RWY 19 and RNP T RWY 19 procedures include:

- Procedure name
- DTHR location and elevation
- FAF altitude
- SDF altitudes
- Distance/altitude table
- Added caution note

6. CANCELLATION

6.1 This SUP will be cancelled when Stage 2 - 8 works are complete, expected to be on 30 November 2026.

7. DISTRIBUTION

7.1 Airservices Australia website only.

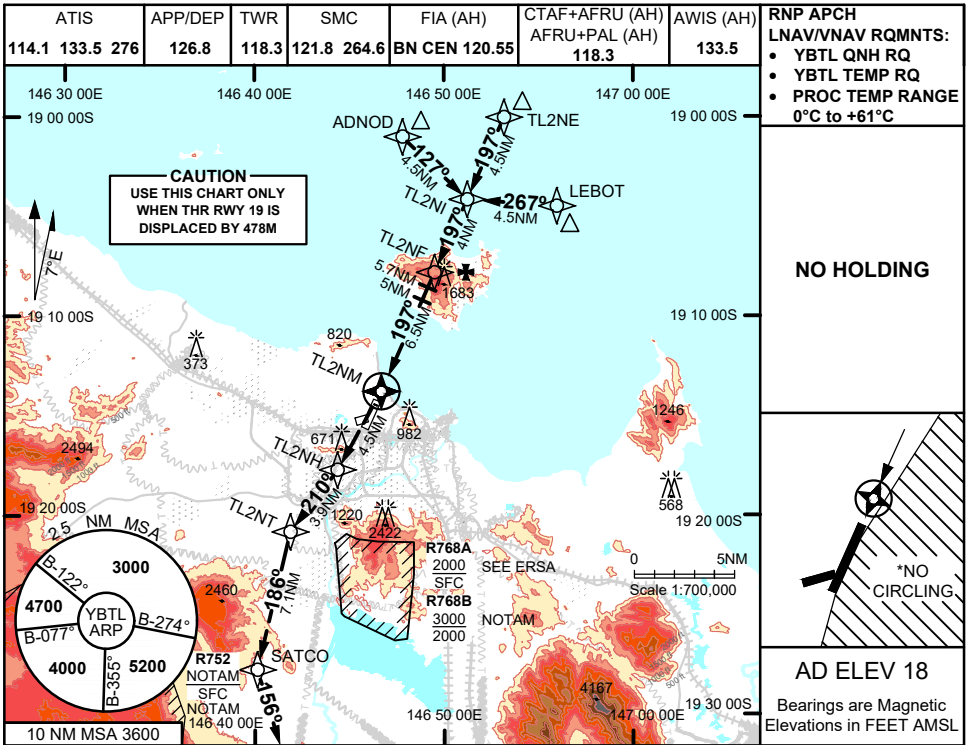
Appendix

1. RNP T RWY 19

**APPENDIX 1
TO SUP H01/26**

TOWNSVILLE/TOWNSVILLE INTL, QLD (YBTL)

RNP T RWY 19

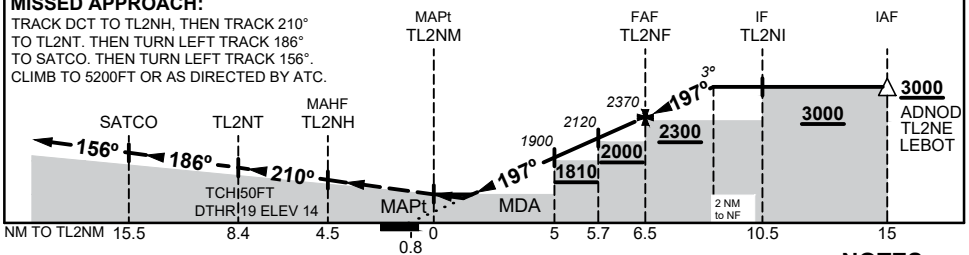


AD ELEV 18
Bearings are Magnetic
Elevations in FEET AMSL

NM TO NEXT WPT	TL2NM	0.8	1	1.2	1.3	2	3	4	5	5.7	TL2NF	1	2
ALT (3° APCH PATH)		560	628	672	733	940	1260	1580	1900	2120	2370	2690	3000

MISSED APPROACH:

TRACK DCT TO TL2NH, THEN TRACK 210° TO TL2NT, THEN TURN LEFT TRACK 186° TO SATCO. THEN TURN LEFT TRACK 156°. CLIMB TO 5200FT OR AS DIRECTED BY ATC.



NOTES

1. MAX IAS:
INITIAL : 210KT
MISSED APCH : 210KT
TL2NH : 210KT
SATCO : 240KT
- *2. NO CIRCLING IN SECTOR EAST OF RWY 01 & RWY 19.

CATEGORY	A	B	C	D
LNAV/VNAV	628 (614 - 3.5)		672 (658 - 3.7)	733 (719 - 4.1)
LNAV	560 (542 - 3.1)			
CIRCLING*	1090 (1072 - 2.4)		1350 (1332 - 4.0)	1380 (1362 - 5.0)
ALTERNATE	(1572 - 4.4)		(1832 - 6.0)	(1862 - 7.0)

Changes: NEW PROCEDURE

BTLGN98-SUP