

**AIP SUPPLEMENT
(SUP)****H202/25****Effective: 202512311255 UTC**

AERONAUTICAL INFORMATION SERVICE,
AIRSERVICES AUSTRALIA, GPO BOX 367,
CANBERRA ACT 2601

For **DISTRIBUTION** queries, contact:
Email: aim_editorial@airservicesaustralia.com

For **CONTENT** queries regarding this SUP, contact:
Email: aviation@geniuslaser.com

Phone: 0427 913 566

**CITY OF MELBOURNE
NEW YEARS EVE (NYE)
LASER DISPLAY 2025-2026****1. INTRODUCTION**

- 1.1 A high intensity laser display will take place as part of the City of Melbourne NYE celebrations. The display will be conducted by Genius Laser Technology (GLT).
- 1.2 The display involves the use of high-powered entertainment lasers throughout the Melbourne Central Business District (CBD) that pose an ocular hazard to flight crews.
- 1.3 The Civil Aviation Safety Authority (CASA) has approved temporary changes to the airspace surrounding the laser display that are necessary to:
 - prevent inadvertent laser exposure to pilots operating in the vicinity of the CBD and within the laser projection zones; and
 - eliminate the risk of distraction, flash blindness, or glare to flight crews.

2. TEMPORARY AIRSPACE CHANGES

- 2.1 A Temporary Restricted Area (TRA) will be established in Class G airspace to facilitate the display:

YMMM/TRA LASER DISPLAY

OCULAR HAZARD

LATERAL LIMITS: 374901S 1445653E – 374908S 1445812E – 374926S 1445919E – 374436S 1450409E – 374814S 1450734E – 375439S 1450203E – 375529S 1445627E – 374901S 1445653E

VERTICAL LIMITS: SFC – BCTA

CONTROLLING AUTHORITY: Airservices Australia (Melbourne TCU) contact +61 3 9235 7337 or ML CEN 135.7 MHz.

- 2.2 A Temporary Danger Area (TDA) will also be established in Class G and Class C airspace to facilitate the display:

YMMM/TDA LASER DISPLAY

OCULAR HAZARD

LATERAL LIMITS: 374846S 1445654E – 374428S 1450401E – 374814S 1450734E – 375439S 1450203E – 375529S 1445627E – 374846S 1445654E

VERTICAL LIMITS: SFC – 7000 FT

CONTACT: Genius Laser Technology Pty. Ltd. Phone +61 413 566 734

- 2.3 The TRA and TDA will be active from 2355 local time on 31 December 2025 until 0015 local time on 1 January 2026.
- 2.4 Refer to Appendices 1 and 2 for ML VTC overlays of the restrictions.

3. AIR TRAFFIC MANAGEMENT

- 3.1 With the exception of priority flights in accordance with *AIP ENR 1.4 paragraph 6.1 (a. to g.)* and emergency services aircraft, entry to the TRA and/or an air traffic control (ATC) clearance to operate within the TDA will not be available.
- 3.2 GLT will cease operating specific laser sites when access is required by authorised aircraft.
- 3.3 All other aircraft in controlled airspace will be rerouted around the TDA by ATC.

- 3.4 Clearances to operate within the vicinity of the Melbourne CBD (e.g. “city orbits”) will not be available.
- 3.5 Aircraft arriving and departing Essendon Airport (YMEN), excluding *AIP ENR 1.4 paragraph 6.1 (a. to g.)* priority flights, may incur additional delays due to the proximity of the TRA/TDA.

4. CANCELLATION

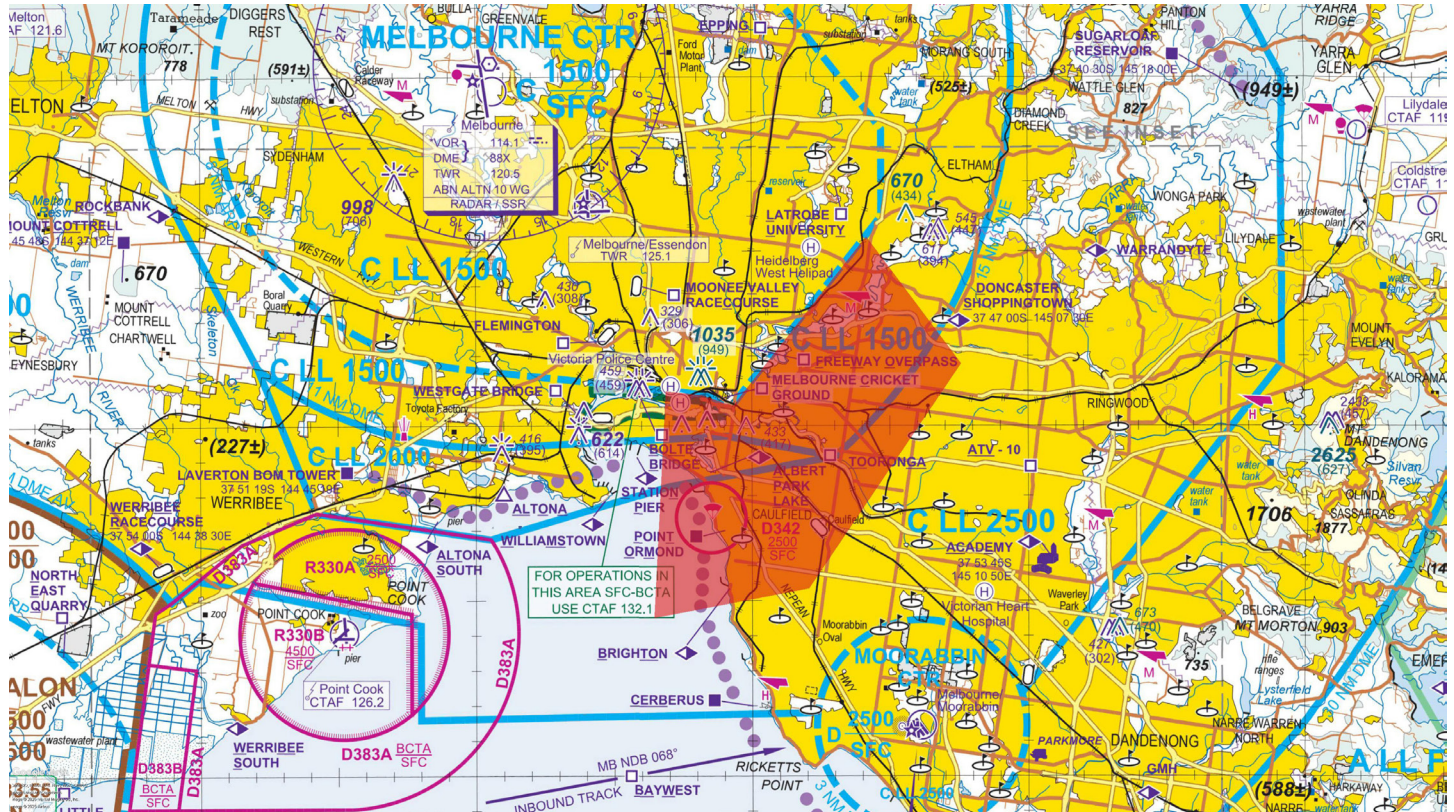
- 4.1 This SUP self-cancels at 202512311315 UTC

5. DISTRIBUTION

- 5.1 Airservices Australia website only.

Appendices

- 1. Temporary Restricted Area Diagram
- 2. Temporary Danger Area Diagram



2. Temporary Danger Area Diagram

