

**AIP SUPPLEMENT
(SUP)****H147/25****Effective: 202509072200 UTC**

AERONAUTICAL INFORMATION SERVICE,
AIRSERVICES AUSTRALIA, GPO BOX 367,
CANBERRA ACT 2601

For **DISTRIBUTION** queries, contact:
Email: aim.editorial@airservicesaustralia.com

For **CONTENT** queries regarding this SUP, contact:
Email: operations@bsaero.space Phone: 0489 998 850

BLACK SKY INDUSTRIES (BSI) ROCKET LAUNCHING ACTIVITIES AT OUTBACK SPACEPORT (OSP) THARGOMINDAH, QUEENSLAND

1. INTRODUCTION

- 1.1 Black Sky Industries (BSI) conduct regular rocket launches from their Outback Spaceport (OSP) launch facility near Thargomindah, Queensland. These launches are currently managed by activation of a temporary restricted area (TRA) that impacts a number of overlying air routes as well as instrument flight procedures at Thargomindah Aerodrome (YTGM).

2. OUTBACK SPACEPORT

- 2.1 The OSP launch facility is located approximately 25NM to the north-west of YTGM.

3. AIRSPACE RESTRICTIONS

- 3.1 The following TRA is declared in the interests of public safety to facilitate rocket launching activities at OSP:

YBBB/TRA 'SPACEPORT'

ROCKET LAUNCHING

LATERAL LIMITS: A circle radius 20NM centre 273619S 1433730E

VERTICAL LIMITS: SFC – FL500

HOURS OF ACTIVITY: NOTAM

CONTROLLING AUTHORITY: Airservices Australia; 07 3866 3314

3.2 For all queries other than immediate access requests, please contact the BSI Range Operations Manager on 0489 998 850.

3.3 **Airspace Activation**

3.3.1 Typical activation times for TRA ‘SPACEPORT’ are provided in the following table. For actual activation times operators should check YBBB FIR NOTAM.

	QLD Local Time (AEST)	Time (UTC)
MON	0800 – 0930	2200 – 2330
	1100 – 1230	0100 – 0230
	1400 – 1530	0400 – 0530
TUE	0800 – 0930	2200 – 2330
	1100 – 1230	0100 – 0230
	1400 – 1530	0400 – 0530
WED	0800 – 0930	2200 – 2330
	1030 – 1130	0030 – 0130
	1400 – 1530	0400 – 0530
THU	0900 – 1000	2300 – 0000
	1100 – 1230	0100 – 0230
	1400 – 1530	0400 – 0530
FRI	0800 – 0930	2200 – 2330
	1100 – 1230	0100 – 0230
	1400 – 1530	0400 – 0530
SAT	0900 – 1000	2300 – 0000
	1100 – 1230	0100 – 0230
	1400 – 1530	0400 – 0530
SUN	0800 – 0930	2200 – 2330
	1030 – 1130	0030 – 0130
	1400 – 1530	0400 – 0530

4. **INSTRUMENT FLIGHT PROCEDURES AT YTGM**

4.1 At all times when TRA ‘SPACEPORT’ is active YTGM RNP RWY 31 and RNP W will be unavailable. When required a separate AD NOTAM will refer airspace users to the YBBB FIR NOTAM for relevant timings.

5. ACCESS TO ROCKET LAUNCH AIRSPACE

- 5.1 Direct tracking through active TRA may be available and is subject to the status of rocket launching activities. Aircraft should plan in accordance with the diversion routes detailed in section 6 and may expect direct tracking when available.

6. DIVERSION ROUTES

- 6.1 The following air routes are restricted during TRA activation windows:
- T74
 - Z418
- 6.2 Alliance jet aircraft operating Ballera (YLLE) to Brisbane (YBBN), Brisbane West Wellcamp (YBWW), or Toowoomba (YTWB) will also be affected.
- 6.3 For Alliance jet aircraft operating YBBN-YLLE no change in flight planning is required, tracking from CV - ELMOL is sufficient.
- 6.4 Pilots intending to operate on T74 or Z418 should plan in accordance with the diversion routes specified in the following tables.

Affected route	T74
Use diversion route	ENPAG OVMUD MUGTI VINAX
Purpose	Separation from hazardous activities in TRA 'SPACEPORT'

Affected route	Z418
Use diversion route	ELMOL IVRAD COLLY
Purpose	Separation from hazardous activities in TRA 'SPACEPORT'

7. CANCELLATION

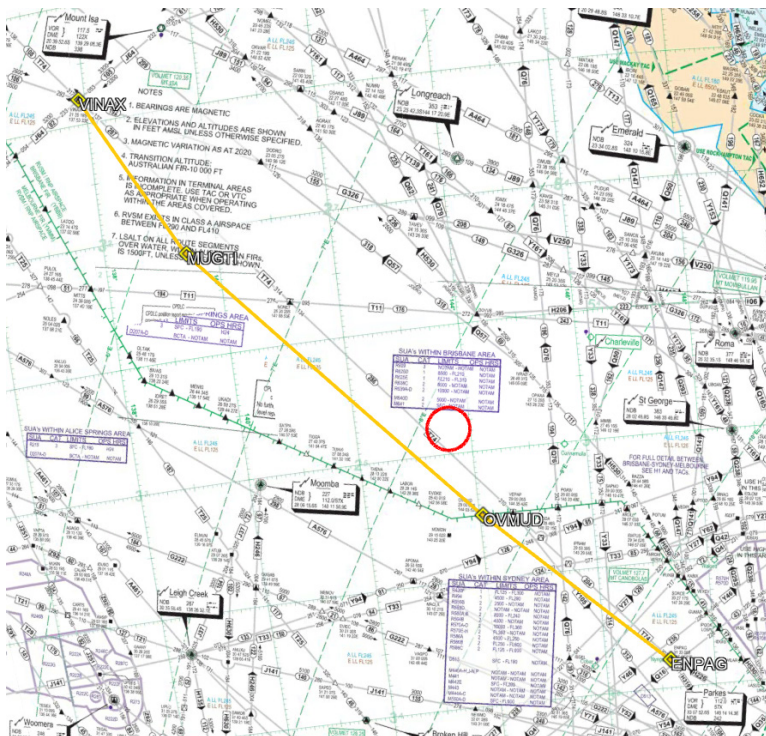
- 7.1 This SUP is associated with ongoing rocket launching activities and remains in force until cancelled.

8. DISTRIBUTION

- 8.1 Airservices Australia website only.

Appendices

1. Temporary SUA areas – ERCH3 overlay and diversion routing
2. Temporary SUA areas – ERCL5 overlay and diversion routing



2. Temporary SUA areas - ERCL5 overlay and diversion routing

