

**AIP SUPPLEMENT
(SUP)****H130/25****Effective: 202508151600 UTC**

AERONAUTICAL INFORMATION SERVICE,
AIRSERVICES AUSTRALIA, GPO BOX 367,
CANBERRA ACT 2601

For **DISTRIBUTION** queries, contact:
Email: aim.editorial@airservicesaustralia.com

For **CONTENT** queries regarding this SUP, contact:
Email: mmvince74@gmail.com bill.bartlett@bigpond.com Phone: 0414 256 602 or
0439 820 635

INTENSIVE GLIDING OPERATIONS GLOUCESTER AERODROME (YGCR) NEW SOUTH WALES 16 - 24 AUGUST 2025

1. INTRODUCTION

- 1.1 Intensive Glider operations will take place in the vicinity of Gloucester Aerodrome (YGCR), NSW over the period 16 to 24 August 2025.
- 1.2 YGCR is situated approximately BRG 240 DEG MAG 29NM from Taree AD (YTRE).

2. SCOPE OF OPERATIONS

- 2.1 Operations will take place within an area bounded by straight lines joining:
 - WARDS RIVER (321318S 1515612E),
 - MONKERAI UPPER (321430S 1515049E),
 - UPPER BOWMAN (315521S 1514650E),
 - BUNDOOK (315343S 1520722E),
 - BUNDOCK MOUNTAIN (315830S 1520500E) and
 - WARDS RIVER (321318S 1515612E).

VERTICAL LIMITS: SFC - 10,000FT

HOURS OF ACTIVITY: 2300 - 0730 UTC Daily.

- 2.2 Up to 15 gliders and one tug aircraft.

3. AIRSPACE AND PROCEDURES

- 3.1 Existing airspace categories apply. ATC Procedures are unchanged.

- 3.2 Participating aircraft will be broadcasting on CTAF 126.7 MHz when within the area.
- 3.3 Gliders may operate in Class E airspace without transponders.
- 3.4 Should the meteorological phenomena 'Standing Mountain Lee Waves' occur, gliders may wish to operate independently outside the area both vertically and laterally and will notify Brisbane Centre.

4. CONTACT

- 4.1 Operator is Central Coast Soaring Club.
- 4.2 Contact: CTAF 126.7 MHz, callsign: 'GLOUCESTER GLIDE'.

5. CANCELLATION

- 5.1 This SUP self-cancels at 202508240730 UTC.

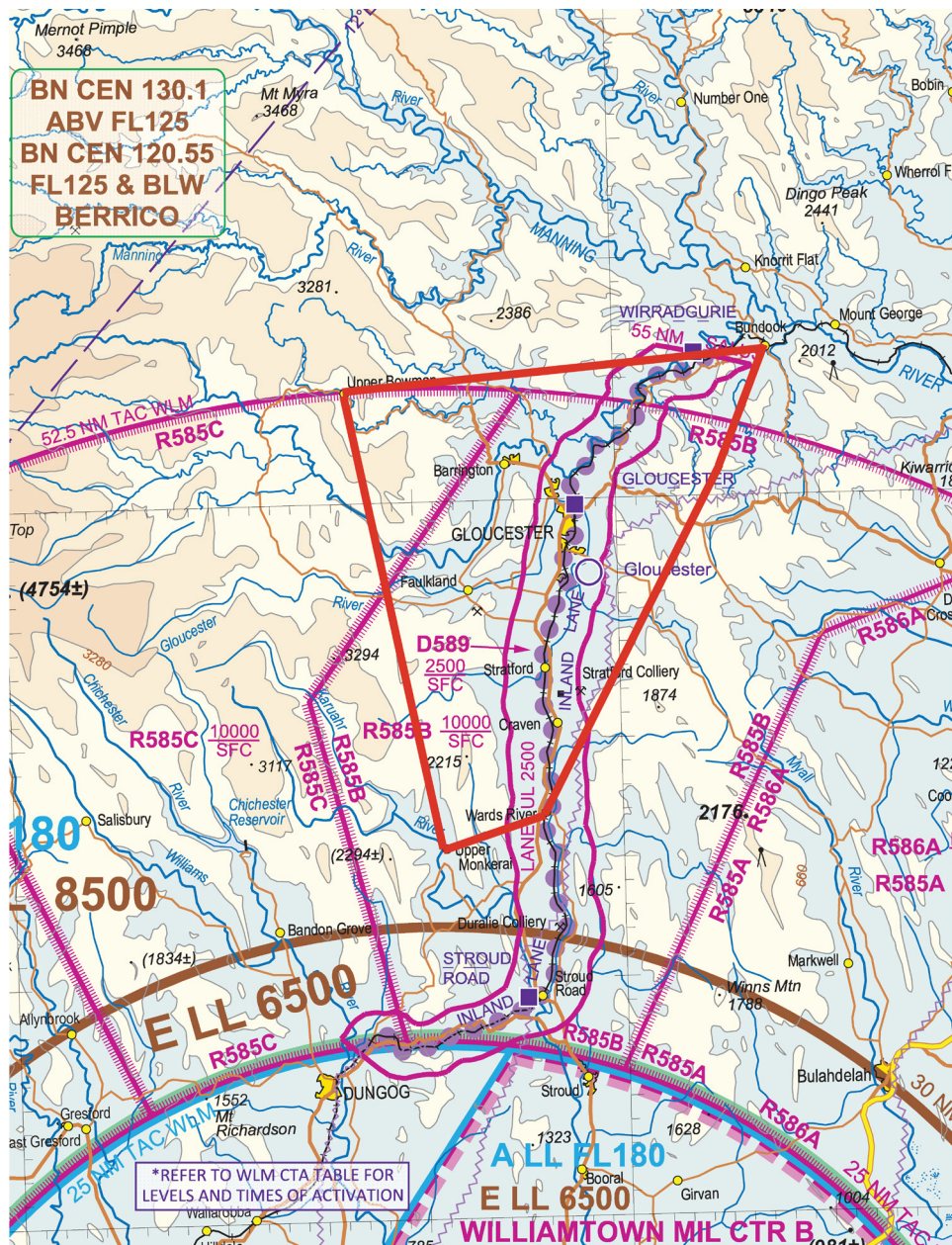
6. DISTRIBUTION

- 6.1 Airservices Australia website only.

Appendices

- 1. Gloucester Soaring Area (Area of Gliding Operations)
- 2. Glider Operating Area and Proximity of Air Routes

1. Gloucester Soaring Area (Area of Gliding Operations)



2. Glider Operating Area and Proximity of Air Routes

