

**AIP SUPPLEMENT  
(SUP)****H121/25****Effective: 202507101400 UTC**

AERONAUTICAL INFORMATION SERVICE,  
AIRSERVICES AUSTRALIA, GPO BOX 367,  
CANBERRA ACT 2601

For **DISTRIBUTION** queries, contact:  
Email: [aim\\_editorial@airservicesaustralia.com](mailto:aim_editorial@airservicesaustralia.com)

For **CONTENT** queries regarding this SUP, contact:  
Email: [adf.airspace@defence.gov.au](mailto:adf.airspace@defence.gov.au) Phone: 02 6128 4857

# **MILITARY EXERCISE 'TALISMAN SABRE' SOUTH QUEENSLAND 11 – 27 JULY 2025**

## **1. INTRODUCTION**

- 1.1 This SUP cancels and replaces H120/25 with correction to waypoint "WELKE" spelling and a change in flight level on affected diversion route Q67.
- 1.2 Elements of Australian and international military forces will be conducting Exercise TALISMAN SABRE 2025 (TS25) over the period 07 – 27 July 2025.
- 1.3 TS25 is a large scale military activity, involving a wide range of tactical flying, live fire and amphibious operations across Queensland. Due to the geographical scale of activities, two TS25 AIP SUP have been published to cover localised regions across Queensland. Users should consult the following AIP SUP for additional activities:
  - Military Exercise 'TALISMAN SABRE', North Queensland, 13 – 27 July 2025
- 1.4 This AIP SUP covers the Rockhampton/ Shoalwater Bay area and describes the TS25 permanent and temporary Special Use Airspace (SUA), Class G operations, airspace access, diversion routes, and procedures associated with this activity.
- 1.5 Airspace associated with Shoalwater Bay will be activated prior to the commencement of TS25 to enable lead in exercises to be conducted. Flight crews should refer to NOTAM to confirm activation details.

2. AIRSPACE

2.1 During the exercise period all, or some, of the following permanent and temporary SUA will be activated, with vertical limits published by NOTAM.

2.1.1 Permanent Shoalwater Bay Training Area (SWBTA) SUA:

IDENT	VERTICAL LIMITS (AMSL)	HOURS	CONTROLLING AUTHORITY
R681	NOTAM - NOTAM	NOTAM	Army RCO Shoalwater Bay
R682	NOTAM - NOTAM	NOTAM	Army RCO Shoalwater Bay
R683	NOTAM - NOTAM	NOTAM	Army RCO Shoalwater Bay
R684A	SFC - 2000	H24	Army RCO Shoalwater Bay
R684B	2000 - NOTAM	NOTAM	Army RCO Shoalwater Bay
R692A	SFC - 2000	NOTAM	Army RCO Shoalwater Bay
R692B	2000 - 6000	NOTAM	Army RCO Shoalwater Bay
R692C	6000 - NOTAM	NOTAM	Army RCO Shoalwater Bay
M678	NOTAM - NOTAM	NOTAM	Army RCO Shoalwater Bay

2.1.2 From 11 - 16 July 2025, military live fire activities will take place in all of the above airspaces including M678.

- 2.1.3 The following Temporary Military Operating Areas (TMOA) and Temporary Restricted Area (TRA) have been established to facilitate TS25 activities in the vicinity of Rockhampton, SWBTA and off-shore areas:

**YBBB/TMOA 'STINGRAY A'**

**MILITARY FLYING**

**LATERAL LIMITS:** 203000S 1503240E - 203000S 1523900E - 210300S 1523900E - 210300S 1500000E - 205757S 150000E - 203000S 1503240E

**VERTICAL LIMITS:** SFC - FL320

**HOURS OF ACTIVATION:** NOTAM

**ADMINISTERING AUTHORITY:** TS25 Airspace Management Team

**YBBB/TMOA 'STINGRAY B'**

**MILITARY FLYING**

**LATERAL LIMITS:** 210300S 1500000E - 210300S 1523900E - 221400S 1523900E - 221400S 1510530E then along the counter clockwise arc of a circle radius 30.00NM centre 221600S 1503300E - 221509S 1500040E - 221500S 1500000E - 210300S 1500000E

**VERTICAL LIMITS:** SFC - FL320

**HOURS OF ACTIVATION:** NOTAM

**ADMINISTERING AUTHORITY:** TS25 Airspace Management Team

**YBBB/TMOA 'STINGRAY C'**

**MILITARY FLYING**

**LATERAL LIMITS:** 221400S 1510530E - 221400S 1523900E - 232500S 1523900E - 230709S 1520000E - 225656S 1504740E - 225400S 1503600E - 224757S 1503721E - 224922S 1504707E - 224119S 1505031E then along the counter clockwise arc of a circle radius 30.00NM centre 221600S 1503300E - 221400S 1510530E

**VERTICAL LIMITS:** SFC - FL320

**HOURS OF ACTIVATION:** NOTAM

**ADMINISTERING AUTHORITY:** TS25 Airspace Management Team

**YBBB/TMOA 'STINGRAY D'****MILITARY FLYING**

**LATERAL LIMITS:** 203000S 1523900E - 203000S 1540000E -  
221400S 1540000E - 221400S 1523900E - 203000S 1523900E

**VERTICAL LIMITS:** SFC - FL320

**HOURS OF ACTIVATION:** NOTAM

**ADMINISTERING AUTHORITY:** TS25 Airspace Management Team

**YBBB/TMOA 'STINGRAY E'****MILITARY FLYING**

**LATERAL LIMITS:** 221400S 1523900E - 221400S 1540000E -  
232500S 1540000E - 232500S 1523900E - 221400S 1523900E

**VERTICAL LIMITS:** SFC - FL320

**HOURS OF ACTIVATION:** NOTAM

**ADMINISTERING AUTHORITY:** TS25 Airspace Management Team

**YBBB/TMOA 'STINGRAY F'****MILITARY FLYING**

**LATERAL LIMITS:** 194730S 1511700E - 194730S 1523900E -  
203000S 1523900E - 203000S 1511700E - 194730S 1511700E

**VERTICAL LIMITS:** SFC - FL320

**HOURS OF ACTIVATION:** NOTAM

**ADMINISTERING AUTHORITY:** TS25 Airspace Management Team

**YBBB/TRA 'MANTA'****CONDITIONAL STATUS:** RA2**MILITARY FLYING**

**LATERAL LIMITS:** 214940S 1500000E - 221500S 1500000E - 221933S 1495410E - 220636S 1494834E - 215931S 1494828E then along the counter clockwise arc of a circle radius 60.00NM centre 211023S 1491115E (MK/DME) - 214940S 1500000E

**VERTICAL LIMITS:** SFC - FL160**HOURS OF ACTIVATION:** NOTAM**CONTROLLING AUTHORITY:** TS25 Airspace Management Team**YBBB/TMOA 'CROSSBOW'****MILITARY FLYING/NON-FLYING**

**LATERAL LIMITS:** 193800S 1521500E - 193800S 1545700E - 203850S 1545700E - 203850S 1521500E - 193800S 1521500E

**VERTICAL LIMITS:** SFC - UNL**ADMINISTERING AUTHORITY:** TS25 Airspace Management Team**2.2 TS25 permanent SWBTA airspace activation**

2.2.1 Activation of permanent SWBTA SUA shall be varied and airspace users should refer to NOTAM (SBX) for confirmation of activation periods.

2.2.2 SWBTA permanent restricted and danger areas may be activated for non-TS25 activities in accordance with normal NOTAM requirements.

**2.3 TS25 temporary SUA activation**

2.3.1 TMOA and TRA airspace activation periods are expected to be in accordance with the following table with exact timings to be confirmed by NOTAM:

Airspace	Dates (Local)	Times
TMOA 'STINGRAY ABCDEF'	11 - 28 JUL 25	Up to H24
TRA 'MANTA'		
TMOA 'CROSSBOW'	20 - 23 JUL 25	Up to 6 hours daily

2.3.2 TMOA 'STINGRAY' airspace volumes have been designed to be activated as distinct areas of operation. As such, volumes will only be activated as required, and TMOA CROSSBOW will not be activated concurrently with overlapping portions of TMOA STINGRAY.

## **2.4 NOTAM**

2.4.1 Airspace users should refer to both local area (SBX) and Brisbane FIR (YBBB) NOTAM to confirm vertical limits and activation timings for permanent and temporary SUA. Timings may be amended or deactivated by NOTAM at short notice. TRA/TMOA timings shall not exceed what is listed in para 2.4.

2.4.2 NOTAM activation of TRA and TMOA mentioned in this document will specifically refer to this SUP.

2.4.3 NOTAM will be issued at least 24 hours prior to expected activation.

2.4.4 General airspace enquiries prior to exercise start can be made to the Joint Airspace Control Cell (JACC) on (02) 6128 4858 during normal business hours (AEST) or via email: [adf.airspace@defence.gov.au](mailto:adf.airspace@defence.gov.au)

2.4.5 During execution, please contact the relevant airspace Controlling Authority listed in ERSA (permanent areas). Contact with the relevant authority of the temporary SUA noted in para 2.1.3 of this SUP (TS25 Airspace Management Team) can be made via email: [hqjoc.aocjacc@defence.gov.au](mailto:hqjoc.aocjacc@defence.gov.au) or the phone number that will be confirmed by NOTAM.

## **3. MILITARY AIRCRAFT OPERATIONS**

### **3.1 Rockhamptom Airport (YBRK)**

3.1.1 There will be an increased military presence at Rockhamptom Airport over the TS25 period. Civil aircraft should be aware that this may lead to unexpected delays as a result of increased traffic.

### **3.2 Naval Warship avoidance**

3.2.1 Australian and foreign warships often have embarked aircraft which may conduct aviation operations at any time.

3.2.2 In order to maintain safe operations, pilots operating in Class G airspace should avoid warships by 5NM laterally or not below 2,000FT vertically whenever possible, and should not circle the warship at any time.

3.2.3 Traffic alerts and warnings may be passed on FREQ 121.5 MHz to aircraft operating in the vicinity of warships.

3.2.4 Flight crews should refer to *AIP ENR 5.3 para 1* for further details.

### 3.3 Noise sensitive areas

- 3.3.1 Military aircraft will plan to avoid known sensitive areas and comply with Fly Neighbourly Advice.

## 4. ACCESS TO EXERCISE AIRSPACE - PRIORITIES

- 4.1 Access through active restricted areas described in this SUP, by non-exercise aircraft, is not available except for:
- i) Aircraft operating in the preservation of life or property (SAR, MED, POL, FFR),
  - ii) Aircraft with a declared emergency, and
  - iii) Border Force operations.
- 4.2 Should priority transits IAW para 4.1 be required, airways clearance must be obtained from the relevant authority prior to entry.
- 4.3 The relevant authority will ensure that any approved transits are segregated from military activities by a minimum of 1NM laterally or 1,000FT vertically.
- 4.4 Conditions for Australian aircraft and foreign aircraft access to MOA (including TMOA) are detailed in *AIP ENR 5.1 para 2.6*. Foreign registered aircraft are strongly recommended to comply with the requirements of MOA/TMOA within international airspace as if they were Australian aircraft because of the potential for hazardous activities to be occurring.

## 5. DIVERSION ROUTES

- 5.1 The following Air Routes are affected by the SUA described in this AIP SUP: A346, B220, Q24, Q67, V308, W889, Y61.
- 5.2 Pilots are not to flight plan via diversion routes promulgated in *ERSA GEN – FPR Shoalwater Bay*.
- 5.3 Pilots operating at levels that would not remain vertically clear of SUA shall flight plan via the following diversion routes.

## 5.4 Airspace – TS25 SWBTA Airspace (Appendix 1)

<b>Affected routes</b>	<b>A346</b>
<b>Use diversion route</b>	<u>At and above FL320</u> Plan: A346  <u>Below FL320 (eastbound)</u> Plan: OVRON MK MAGRA RK GLA LEEAM A346  <u>Below FL320 (westbound)</u> Plan: A346 LEEAM GLA RK then as per Q67 diversion route to OVRON
<b>Purpose</b>	Separation from hazardous activities in SWBTA, TRA MANTA and TMOA STINGRAY-B, C, E.

<b>Affected routes</b>	<b>B220 southbound to Y89</b>
<b>Use diversion route</b>	<u>At and above FL320</u> Plan: B220 KELPI Y89  <u>Below FL320</u> Plan: LAMEK G205 OVRON B462 MK MUNAR Y61 RUROX Y177 BESBO
<b>Purpose</b>	Separation from hazardous activities in SWBTA, TRA MANTA and TMOA STINGRAY-B, C.

<b>Affected routes</b>	<b>G591</b>
<b>Use diversion route</b>	Plan: G591 LAMEK 1918S 15502E PUGEL
<b>Purpose</b>	Separation from hazardous activities in TMOA CROSSBOW.



<b>Affected routes</b>	<b>Q24 northbound to B220</b>
<b>Use diversion route</b>	<p><u>At and above FL320</u> Plan: Q24 KELPI B220</p> <p><u>Below FL320</u> Plan: GUDSO Q67 then as per Q67 diversion route to OVRON G205 LAMEK.</p>
<b>Purpose</b>	Separation from hazardous activities in SWBTA, TRA MANTA and TMOA STINGRAY-B, C.

<b>Affected routes</b>	<b>Q67</b>
<b>Use diversion route</b>	<p><u>At and above FL320</u> Plan: Q67 GLA RK TARES NOLUP OVRON Q67</p> <p><u>Below FL160</u> Plan: Q67 GLA RK TARES 2210S 14940E WELKE OVRON Q67</p>
<b>Purpose</b>	Separation from hazardous activities in SWBTA, TRA MANTA and TMOA STINGRAY B.

<b>Affected routes</b>	<b>Q67 transition to V308 (YBMK, YBPN, and YBTL arrivals)</b>
<b>Use diversion route</b>	<p><u>At and above FL160</u> Plan: GLA RK TARES WELKE</p> <p><u>Below FL160</u> Plan: GLA RK TARES 2210S 14940E WELKE</p>
<b>Purpose</b>	Separation from hazardous activities in SWBTA, TRA MANTA and TMOA STINGRAY B.

<b>Affected routes</b>	<b>V308</b>
<b>Use diversion route</b>	<u>At and above FL160</u> Plan: RK TARES WELKE  <u>Below FL160</u> Plan: GLA RK TARES 2210S 14940E WELKE
<b>Purpose</b>	Separation from hazardous activities in SWBTA, TRA MANTA and TMOA STINGRAY B.

<b>Affected routes</b>	<b>W889</b>
<b>Use diversion route</b>	<u>At and above FL160</u> Plan: RK TARES WELKE  <u>Below FL160</u> Plan: RK TARES 2210S 14940E WELKE
<b>Purpose</b>	Separation from hazardous activities in SWBTA, TRA MANTA.

<b>Affected routes</b>	<b>Y61</b>
<b>Use diversion route</b>	<u>At and above FL160</u> Plan: Y61  <u>Below FL160</u> Plan: MK MUNAR LERKI RUROX
<b>Purpose</b>	Segregated route structure from northbound diversion routes.

## 6. CANCELLATION

6.1 This SUP self-cancels at 202507271400 UTC.

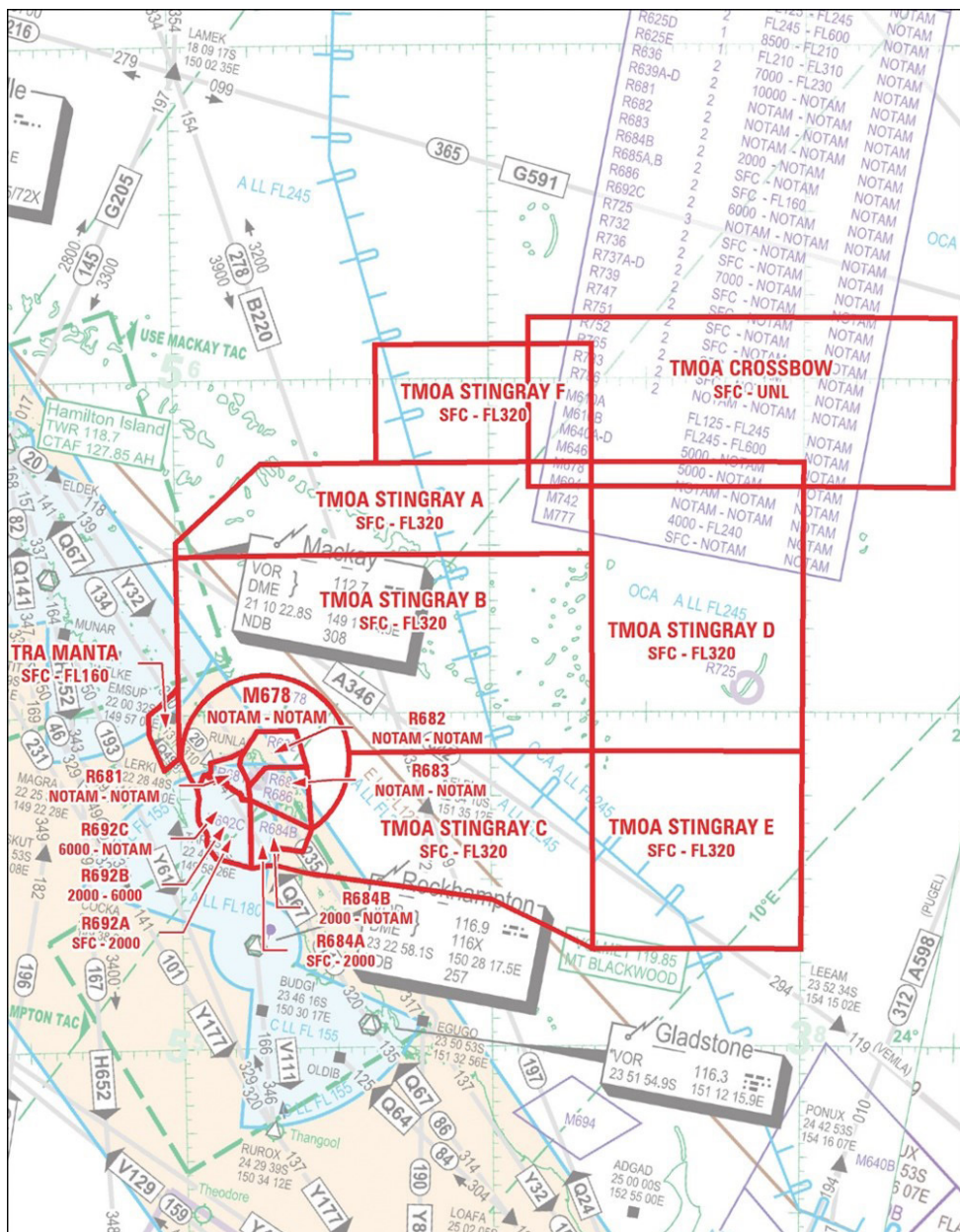
## 7. DISTRIBUTION

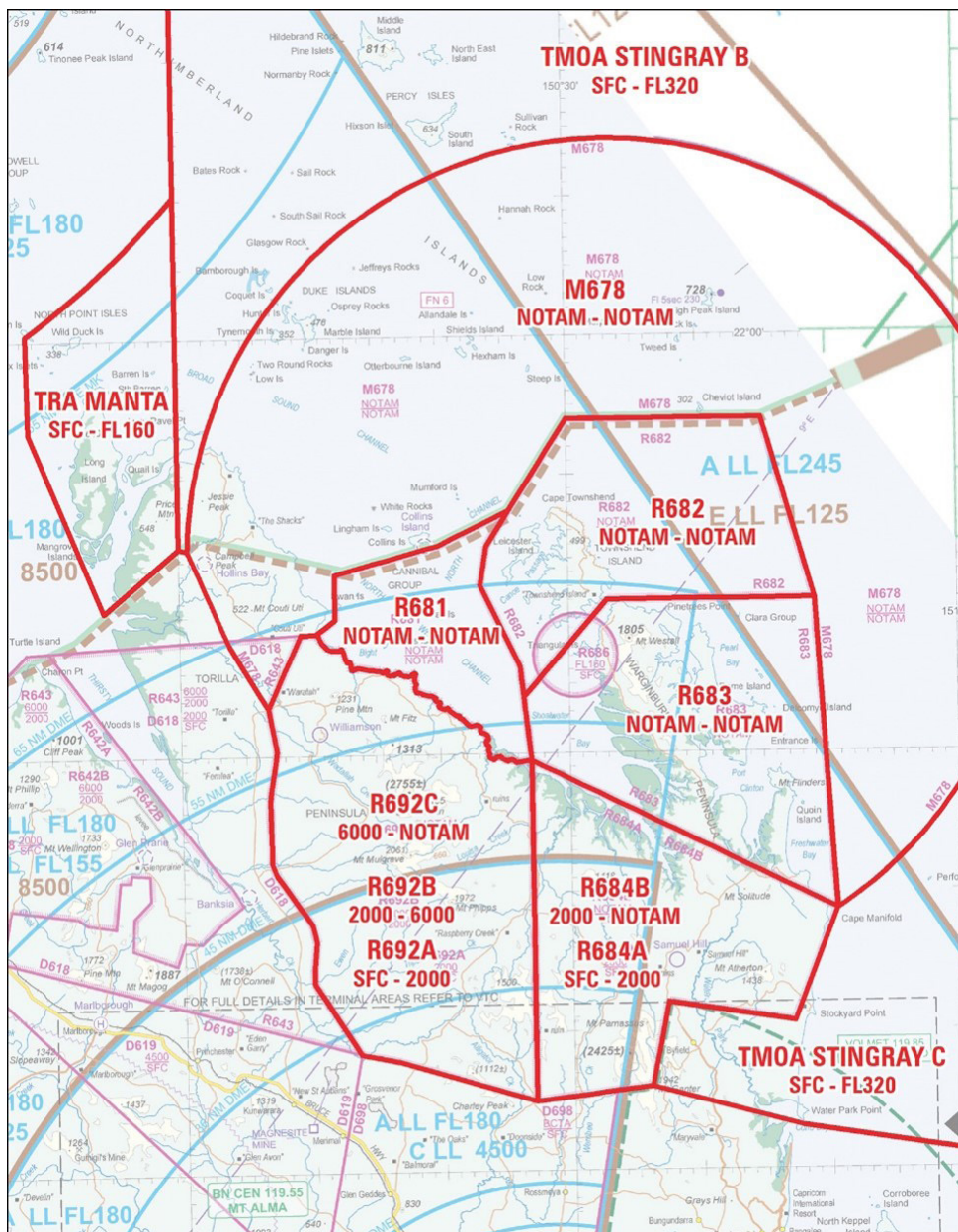
7.1 Airservices Australia website only.

**Appendices**

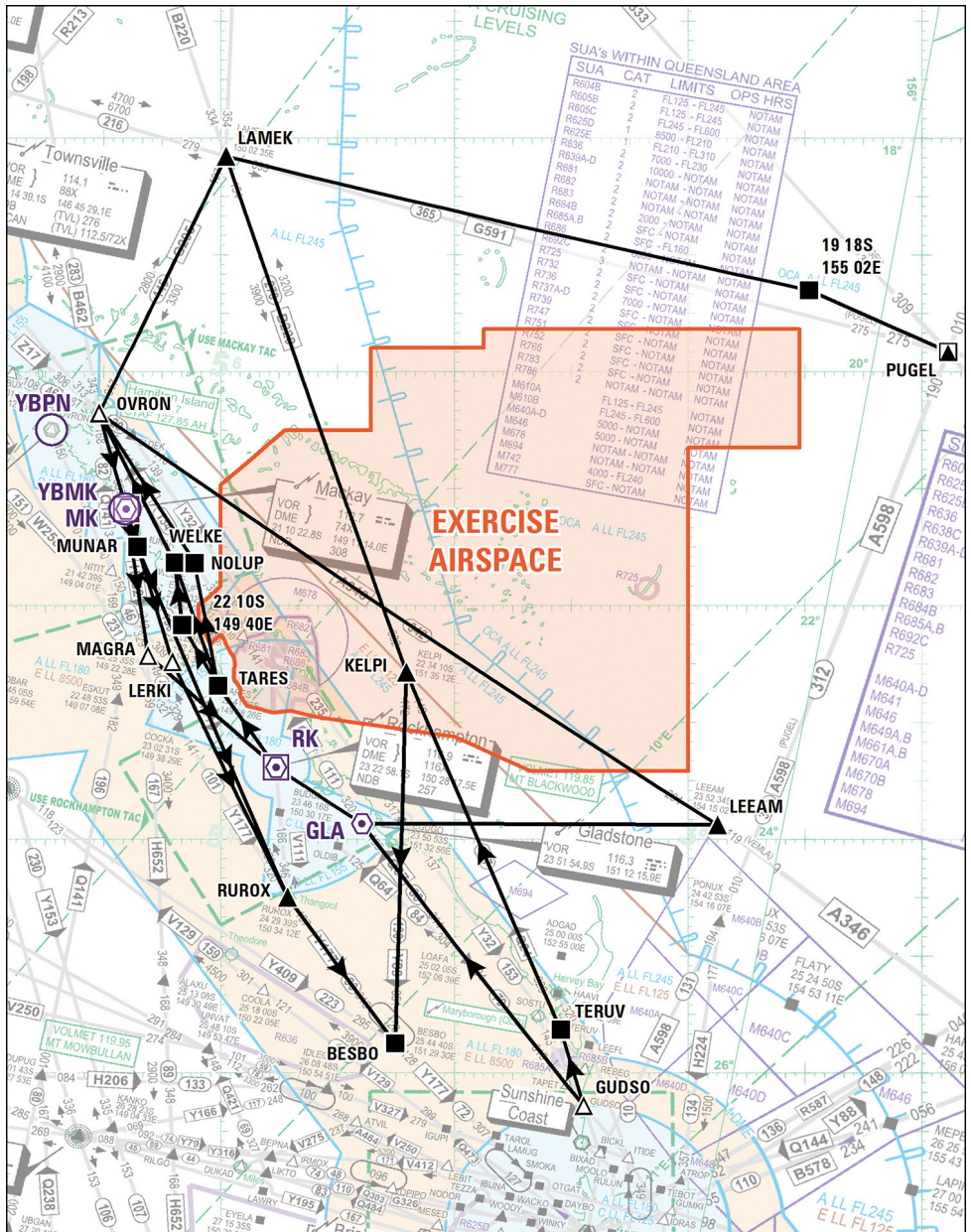
1. TS25 SWBTA RA, TRA and TMOA
2. TS25 SWBTA RA , TRA and TMOA – Coastal Areas
3. TS25 Airspace Diversion Routes
4. TS25 Airspace Diversion Routes – Enlarged
5. TMOA 'CROSSBOW' Airspace with Diversion Routes.

## **1. TS25 SWBTA RA, TRA and TMOA**

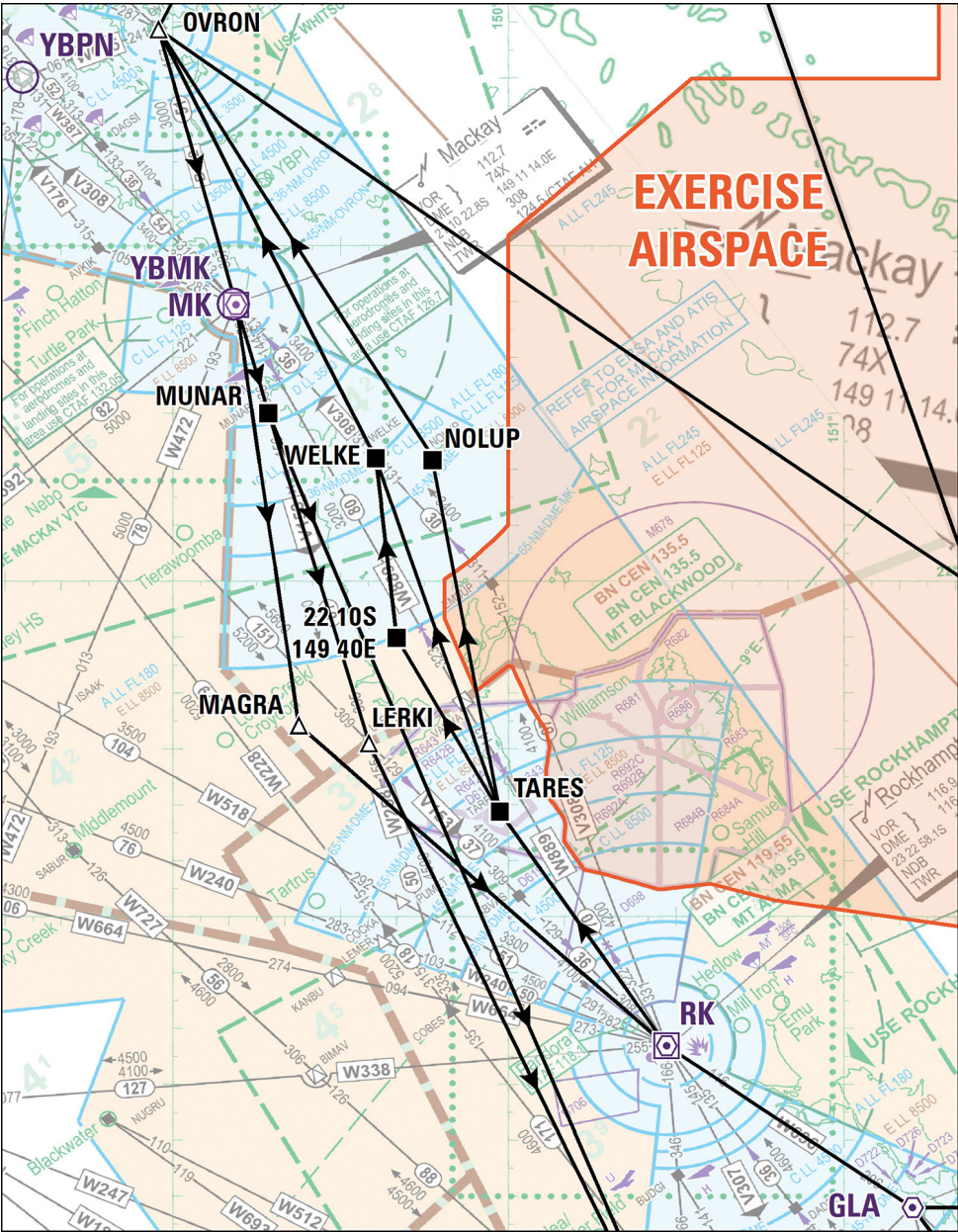








**4. TS25 Airspace Diversion Routes – Enlarged**





5. TMOA 'CROSSBOW' Airspace with Diversion Routes

