

**AIP SUPPLEMENT  
(SUP)****H114/25****Effective: 202507121200 UTC**

AERONAUTICAL INFORMATION SERVICE,  
AIRSERVICES AUSTRALIA, GPO BOX 367,  
CANBERRA ACT 2601

For **DISTRIBUTION** queries, contact:  
Email: [aim\\_editorial@airservicesaustralia.com](mailto:aim_editorial@airservicesaustralia.com)

For **CONTENT** queries regarding this SUP, contact:  
Email: [adf.airspace@defence.gov.au](mailto:adf.airspace@defence.gov.au)

# **MILITARY EXERCISE 'TALISMAN SABRE' NORTH QUEENSLAND 13 – 27 JULY 2025**

## **1. INTRODUCTION**

- 1.1 Elements of Australian and international military forces will be conducting Exercise TALISMAN SABRE 2025 (TS25) throughout July 2025.
- 1.2 TS25 is a large scale military activity, involving a wide range of tactical flying, live fire and amphibious operations across Queensland. Due to the geographical scale of activities, two TS25 AIP SUP have been published to cover localised regions across Queensland. Users should consult the following AIP SUP for additional QLD activities:
  - AIP SUP MILITARY EXERCISE 'TALISMAN SABRE' South Queensland 11 – 27 July 2025
- 1.3 This AIP SUP covers the region spanning Charters Towers to Cairns, and describes the TS25 permanent and temporary airspace, Class G operations, airspace access and procedures associated with this activity.
- 1.4 TS25 activities between the Whitsundays and Cairns shall occur within existing Townsville Field Training Area (TFTA) special use airspace (SUA), Temporary Restricted Areas (TRA), and portions of Class G airspace.

2. AIRSPACE

2.1 All or some of the following permanent and temporary SUA will be activated in support of TS25.

2.1.1 Permanent TFTA SUA 13-27 JUL:

IDENT	VERTICAL LIMITS (AMSL)	HOURS	CONTROLLING AUTHORITY
R736	SFC – NOTAM	NOTAM	452 SQN TVL FLT
R739	SFC – NOTAM	NOTAM	452 SQN TVL FLT
R751	SFC – NOTAM	NOTAM	452 SQN TVL FLT
R737A	7000 – NOTAM	NOTAM	452 SQN TVL FLT
R737B	7000 – NOTAM	NOTAM	452 SQN TVL FLT
R737C	7000 – NOTAM	NOTAM	452 SQN TVL FLT
D744	SFC – 7000	NOTAM	452 SQN TVL FLT

2.1.2 During the activation of TRA ‘LAKEVIEW’, the Controlling Authority for R737AB is temporarily delegated to the Australian Air Support Operations Centre (ASOC), TEL: 0472 613 560. This temporary delegation will also be noted in the issued NOTAM.

2.2 The following TRA are established for the purposes of TS25:

2.2.1 TRA ‘FENRIR’ from the 13-25 JUL:

YBBB/TRA ‘FENRIR’

Conditional Status: RA2

Military Flying

**Lateral Limits:** 195715S 1463232E then along the clockwise arc of a circle radius 5.00NM centre 200100S 1462900E – 200147S 1462345E – 195715S 1463232E

**Vertical Limits:** SFC – 4500

**Hours of Activity:** NOTAM

**Controlling Authority:** Combined Joint Special Operations Air Component (CJSOAC) Watch Keeper (Contact Details to be contained in NOTAM)

## 2.2.2 TRA 'LAKEVIEW' from the 13-15 JUL:

**YBBB/TRA 'LAKEVIEW'****Conditional Status:** RA2**Military Flying****Lateral Limits:** 200714S 1453048E – 195452S 1454747E – 201443S 1460520E – 202654S 1454717E – 200714S 1453048E**Vertical Limits:** SFC – 5000**Hours of Activity:** NOTAM**Controlling Authority:** Australian ASOC, TEL: 0472 613 560

## 2.2.3 TRA 'SHADE' and 'BANSHEE' in support of amphibious activities in the vicinity of Cowley Beach Training Area from 14-16 JUL:

**YBBB/TRA 'SHADE'****Conditional Status:** RA2**Military Flying****Lateral Limits:** 173823S 1460149E then along counter clockwise arc of a circle radius 50.00NM centre 165101S 1454438E (CS/DME) – 173029S 1461658E – 173029S 1464127E – 175140S 1464127E – 175140S 1461010E – 174412S 1461011E – 174412S 1460203E then north along the Bruce Highway – 173823S 1460149E**Vertical Limits:** SFC – 3000**Hours of Activity:** NOTAM**Controlling Authority:** Tactical Air Control Party Afloat (TACP-A) (Contact Details to be contained in NOTAM)

**YBBB/TRA ‘BANSHEE’**

**Conditional Status:** RA1

**Military Flying**

**Lateral Limits:** 173823S 1460149E then along counter clockwise arc of a circle radius 50.00NM centre 165101S 1454438E (CS/DME) – 173029S 1461658E – 173029S 1464127E – 175140S 1464127E – 175140S 1461010E – 174412S 1461011E – 174412S 1460203E then north along the Bruce Highway – 173823S 1460149E

**Vertical Limits:** 3000 – 6000

**Hours of Activity:** NOTAM

**Controlling Authority:** Tactical Air Control Party Afloat (TACP-A) (Contact Details to be contained in NOTAM)

2.3 TRA activation times are expected to be in accordance with the following table:

Date	Time (Local)	Time (UTC)
TRA ‘FENRIR’		
13-25 JUL	H24	H24
TRA ‘LAKEVIEW’		
13-15 JUL	2200 - 0400	1200 – 1800
TRA ‘SHADE’		
14-16 JUL	NOTAM	NOTAM
TRA ‘BANSHEE’		
14-16 JUL	NOTAM	NOTAM

**2.4 NOTAM**

- 2.4.1 Airspace users should refer to the local area (TLX) and Brisbane FIR (YBBB) NOTAM to confirm vertical limits and activation timings for permanent airspace and TRA. Timings may be amended or airspace deactivated by NOTAM at short notice.
- 2.4.2 Activation of TRA in support of TS25 will specifically refer to this SUP in NOTAM.
- 2.4.3 NOTAM will be issued at least 12 hours prior to expected activation.

- 2.4.4 General airspace enquiries prior to exercise start can be made to the Joint Airspace Control Cell (JACC) on (02) 6128 4858 during normal business hours (AEST) or via email: [adf.airspace@defence.gov.au](mailto:adf.airspace@defence.gov.au).
- 2.4.5 During execution, please contact the relevant airspace Controlling Authority listed in ERSa (permanent areas), paragraph 2.2 of this SUP (temporary areas) or as published by NOTAM.

### **3. ACCESS TO EXERCISE AIRSPACE – CHARTERS TOWERS REGION**

- 3.1 Flight crews are to remain north of the Flinders Highway in the vicinity of Macrossan in order to remain clear of TRA 'FENRIR'.
- 3.2 YCHT RNP RWY 24 Approach will not be available while TRA 'FENRIR' is active. The affected procedure will be promulgated as unavailable by NOTAM.
- 3.3 During activation of TRA 'LAKEVIEW', the Charters Towers (YCHT) RNP RWY 06 approach will only be available via 'HT2WC' and 'HT2WA' initial approach fixes. HT2WB is not available during TRA 'LAKEVIEW' activation. The affected procedure will be promulgated as unavailable by NOTAM.
- 3.4 In all circumstances, the relevant controlling authority will facilitate access to aircraft with a declared emergency, participating in activities for the preservation of life and property (SAR, MED, POL or FFR), or conducting a non-training instrument approach to YCHT in IMC.

#### **3.5 TRA 'FENRIR'**

- 3.5.1 Should transit of TRA 'FENRIR' be required, transit clearance must be obtained from the Controlling Authority prior to entry. The underlying Class G services will apply. Aircraft requiring transit are requested to make contact with the Controlling Authority prior to departure.

#### **3.6 TRA 'LAKEVIEW'**

- 3.6.1 Should transit of TRA 'LAKEVIEW' be required, transit clearance must be obtained from the Controlling Authority prior to entry. The underlying Class G services will apply. Aircraft requiring transit are requested to make contact with the Controlling Authority prior to departure.

#### **4. ACCESS TO EXERCISE AIRSPACE – COWLEY BEACH TRAINING AREA (CBTA)**

- 4.1 Flight crews are to remain west of the Bruce Highway in order to remain clear of TRA 'SHADE' and TRA 'BANSHEE'.
- 4.2 YIFL RNP RWY 32 is affected by TRA 'SHADE' and 'BANSHEE'. Use of this IFP requires clearance from the Controlling Authority to transit active TRA.
- 4.3 In all circumstances, the Controlling Authority will facilitate access to aircraft with a declared emergency, participating in activities for the preservation of life and property (SAR, MED, POL or FFR), or conducting a non-training instrument approach to YIFL in IMC.

##### **4.4 TRA 'SHADE'**

- 4.4.1 Access to TRA 'SHADE' (Conditional Status RA2) may be approved to facilitate transit provided that prior coordination has taken place with the Controlling Authority no later than 12 hours beforehand. The underlying Class G services will apply.

##### **4.5 TRA 'BANSHEE'**

- 4.5.1 Pilots may flight plan through TRA 'BANSHEE' (Conditional Status RA1) and under normal circumstances expect a clearance from the Controlling Authority. Notification of intent to transit TRA 'BANSHEE' is to be provided to the Controlling Authority, HQAAF Tactical Air Control Party (TACP) – Afloat, via phone or email. The underlying Class G services will apply.
- 4.5.2 Clearances through TRA 'BANSHEE' may be subject to delay due to airspace de-confliction requirements ahead of civil aircraft transit.
- 4.5.3 To avoid delays, transit clearance through TRA 'BANSHEE' should be coordinated via telephone prior to becoming airborne, where practicable.
- 4.6 Airborne aircraft, having provided sufficient notice in accordance with para 4.4.1-4.5.3, may request transit through active TRA by contacting the Controlling Authority, callsign 'TAC P', via the CTAF, FREQ 132.9 MHz.
- 4.7 When requesting transit clearance, pilots shall advise aircraft callsign, type, position, altitude and desired route.
- 4.8 Transiting aircraft will be deconflicted from UAS operations by at least 1NM laterally or 1,000FT vertically.
- 4.9 Phone details for TACP-A will be published in TRA NOTAM.

4.10 TACP-A may be contacted by the following email addresses:

- Prior to activity execution: [tacp.afloat@defence.gov.au](mailto:tacp.afloat@defence.gov.au)
- During execution: [tacp.afloat@fleet.defence.gov.au](mailto:tacp.afloat@fleet.defence.gov.au)

## 5. TOWNSVILLE AERODROME (YBTL)

- 5.1 Due to the increased military flying and basing at YBTL, all aircraft captains, including military exercise aircraft, should anticipate some delays. Airborne delays can be expected at the periods immediately before and within 30 minutes of TFTA restricted airspace activation.
- 5.2 No change in traffic priority shall be afforded due TS25 activities. All aircraft operating at YBTL and within Townsville CTA will be afforded equal priority IAW *AIP ENR 1.4*.
- 5.3 Pilots are to flight plan in accordance with *ERSA GEN – FPR* Townsville for diversions around TFTA and R737ABC.

## 6. INCREASED MILITARY FLYING IN CLASS G AIRSPACE

- 6.1 Throughout the exercise period, increased military flying in Class G airspace will take place in the following locations:
- Tully (See Appendix 3): 172600S 1461700E – 181200S 1461200E – 174700S 1450000E – 173200S 1450400E – 172600S 1461700E.
  - Whitsundays (See Appendix 4): 204000S 1492600E – 205600S 1492400E – 204200S 1483200E – 203400S 1483600E.
- 6.2 Defence will issue a NOTAM in these locations to advise of increased military flying for the applicable dates.

## 7. CANCELLATION

- 7.1 This SUP self-cancels at 202507271400 UTC.

## 8. DISTRIBUTION

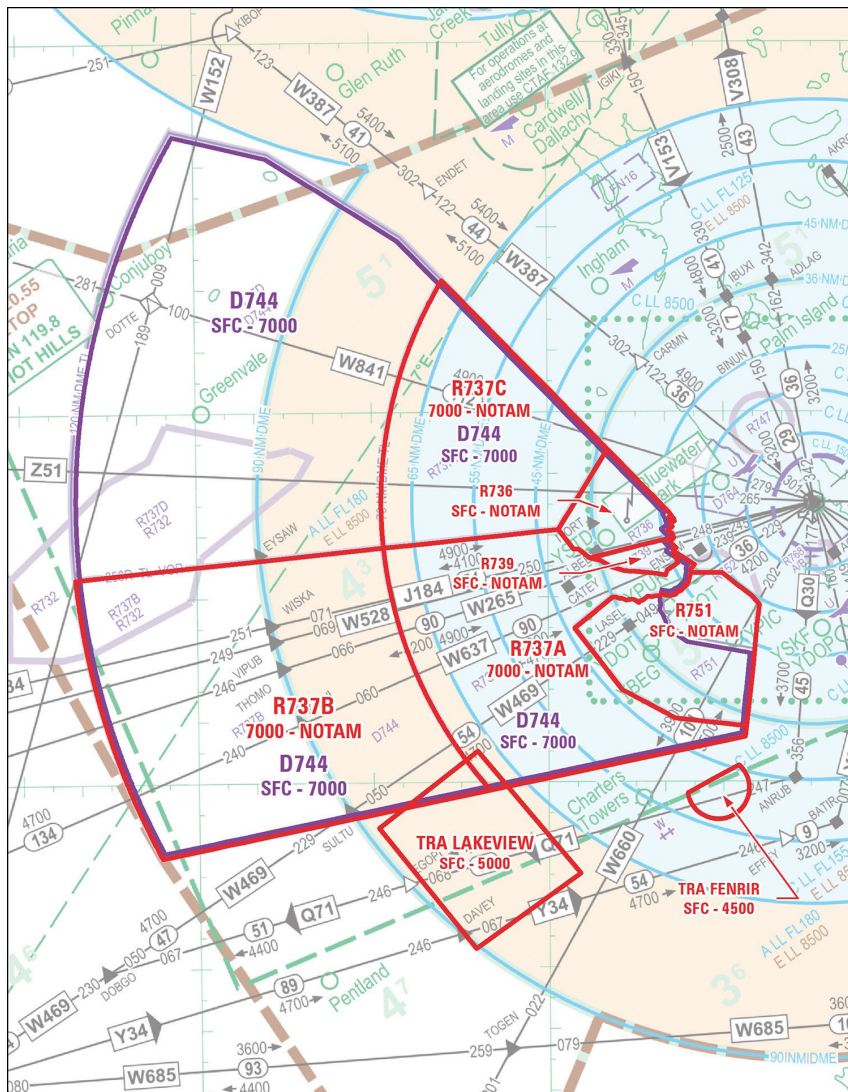
- 8.1 Airservices Australia website only.

## Appendices

1. Airspace – Extant TFTA SUA with TRA 'LAKEVIEW' and TRA 'FENRIR'.
2. Airspace – TRA 'SHADE' and TRA 'BANSHEE'
3. Increased Military Flying in Class G Airspace – Tully
4. Increased Military Flying in Class G Airspace – Whitsundays

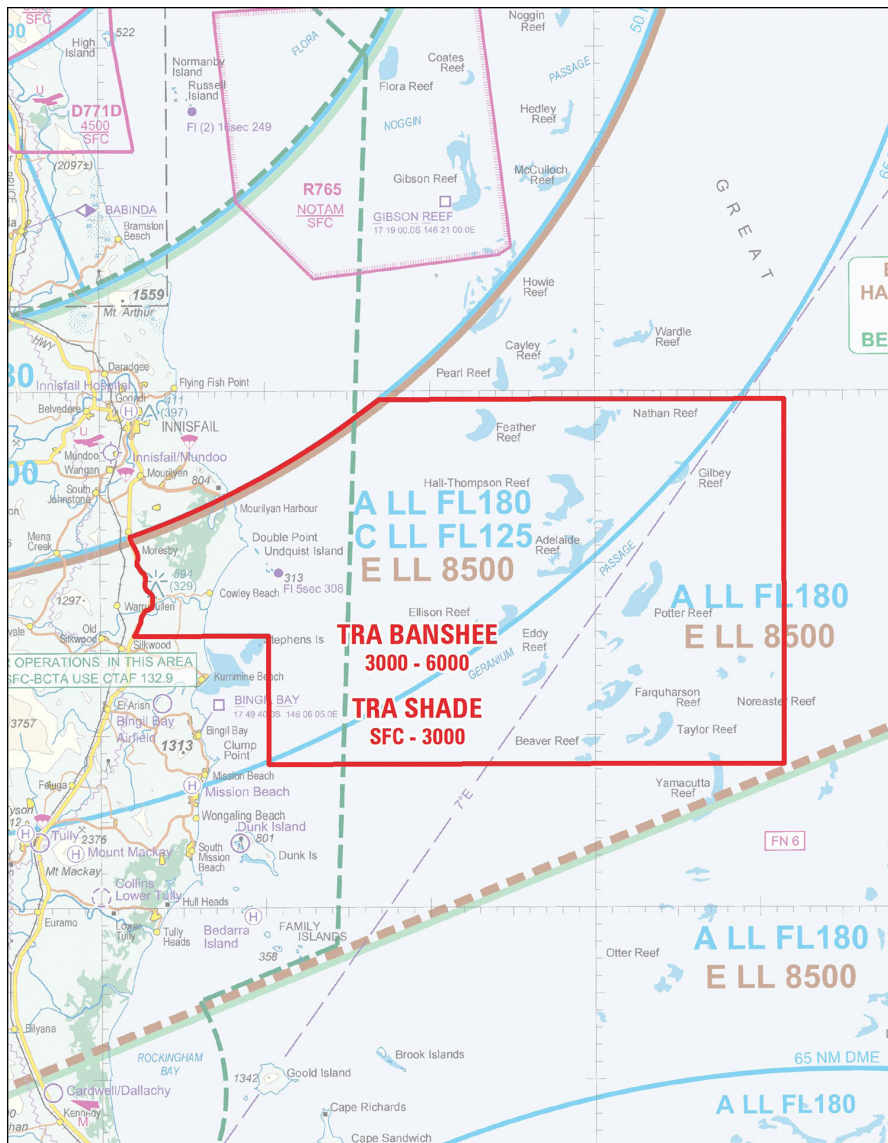
# Appendix 1 to SUP H114/25

## 1. Airspace – Extant TFTA SUA, TRA ‘FENRIR’ and TRA ‘LAKEVIEW’

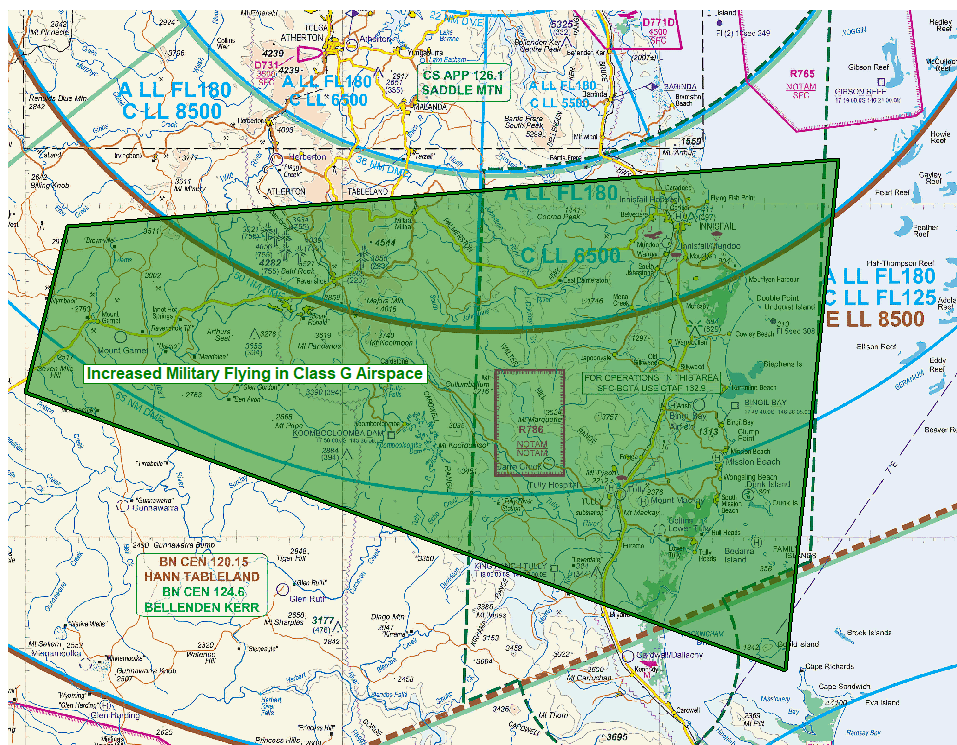




## 2. Airspace – TRA ‘SHADE’ and TRA ‘BANSHEE’



### 3. Increased Military Flying in Class G Airspace - Tully



#### 4. Increased Military Flying in Class G Airspace - Whitsundays

