

**AIP SUPPLEMENT
(SUP)****H104/25****Effective: 202505270300 UTC**

AERONAUTICAL INFORMATION SERVICE,
AIRSERVICES AUSTRALIA, GPO BOX 367,
CANBERRA ACT 2601

For DISTRIBUTION queries, contact:
Email: aim.editorial@airservicesaustralia.com

For CONTENT queries regarding this SUP, contact:
Email: airsidemanagement@adgnt.com.au

DARWIN AERODROME (YPDN) RWY 11/29 RECONSTRUCTION PROJECT: OPERATIONAL RESTRICTIONS DURING WORKS – STAGES 28, 30A AND 30B

1. INTRODUCTION

- 1.1 This SUP cancels and replaces SUP H99/25 with changes to para 4.3 and 5.4.
- 1.2 This SUP provides operational information for users of Darwin Aerodrome (YPDN) during Stages 28, 30A and 30B of the RWY 11/29 Reconstruction Project.
- 1.3 During Stage 28 – RWY 11/29 full length runway will be available and works on the runway will be carried out under time limited works.
- 1.4 It is essential that pilots ensure they understand displaced threshold markings and the associated requirements of displaced threshold operations. Pilots are reminded to check YPDN NOTAM during works to ensure they are using the correct RWY distances.

2. REFERENCES

- 2.1 Method of Working Plan – [MOWP 23/02 Version 3.0.1 Method of Working Plans, Darwin International Airport](#)

3. STAGE 28

- 3.1 This stage will be in operation H24 commenced 31 March 2025 through to 30 June 2025.

- 3.2 Stage 28 includes removal of redundant AGL following AGL cutover to the new system. Activities include light fitting removal and installation of Distance to Run Marker signs under time limited works.
- 3.3 RWY 11/29 Details:
 - Full length available
- 3.4 Taxiway Details:
 - No restrictions to taxiway

4. STAGE 30A

- 4.1 This stage will be in operation from 1000 to 1800 Local (0030 to 0830 UTC), when concurrent with Stage 30B, commenced 24 May 2025, and is expected to run until 31 May 2025.
- 4.2 Stage 30A includes lift and respacing of Taxiway C3 AGL lead-out centreline lights and works past the work limit markers performed under time limited works.
- 4.3 RWY 11/29 Details:
 - RWY 11 Displaced Threshold 824M
 - RWY 11/29 765M western end closed

	TORA	TODA	ASDA	LDA
RWY 11	2589 (8494)	2679 (8789) (2.14)	2589 (8494)	2530 (8300)
RWY 29	2589 (8494)	2679 (8789) (2.0)	2589 (8494)	2589 (8494)

Supplementary Takeoff Distances		
RWY 11	2308 (7572) (1.6)	2524 (8281) (1.9)
RWY 29	2587 (8487) (1.6)	2662 (8733) (1.9)

Caution when backtracking for RWY 11 departure or following arrival RWY 29, avoid making tight 180 DEG turn.

- 4.4 Taxiway details:
 - TWY A1, C3 and C4 closed.
- 4.5 Taxiway C4 is available for ground engine run and compass swing during Stage 30A

5. STAGE 30B

- 5.1 Stage 30B will run concurrently with Stage 30A.
- 5.2 Stage 30B will be in operation during the following dates and times:
- 25 May 2025, 1710 to 0000 Local (0740 to 1430 UTC)
 - 26 May 2025, 1710 to 0100 Local (0740 to 1530 UTC)
 - 27 May 2025 to 31 May 2025, 1710 to 2320 Local (0740 to 1350 UTC)
- 5.3 Stage 30B works includes lift and respacing of Taxiway C3 AGL lead-out centreline lights.
- 5.4 RWY 11/29 Details:
- RWY 11 Displaced Threshold 824M
 - RWY 11/29 765M western end closed
 - RWY 11/29 not available for scheduled international Air Transport Operations due to RESA of 130M in place

	TORA	TODA	ASDA	LDA
RWY 11	2589 (8494)	2679 (8789) (2.14)	2589 (8494)	2530 (8300)
RWY 29	2589 (8494)	2679 (8789) (2.0)	2589 (8494)	2589 (8494)

Supplementary Takeoff Distances		
RWY 11	2308 (7572) (1.6)	2524 (8281) (1.9)
RWY 29	2587 (8487) (1.6)	2662 (8733) (1.9)

Caution when backtracking for RWY 11 departure or following arrival RWY 29, avoid making tight 180 DEG turn.

- 5.5 Taxiway details:
- Taxiway A1, C3 and C4 closed
- 5.6 Taxiway C4 is available for ground engine run and compass swing during Stage 30B

6. CONTACT

6.1 For further information contact:

Van Nguyen

Airside Manager: airsidemanagement@adgnt.com.au

7. CANCELLATION

7.1 This SUP cancels when Stage 30B is complete.

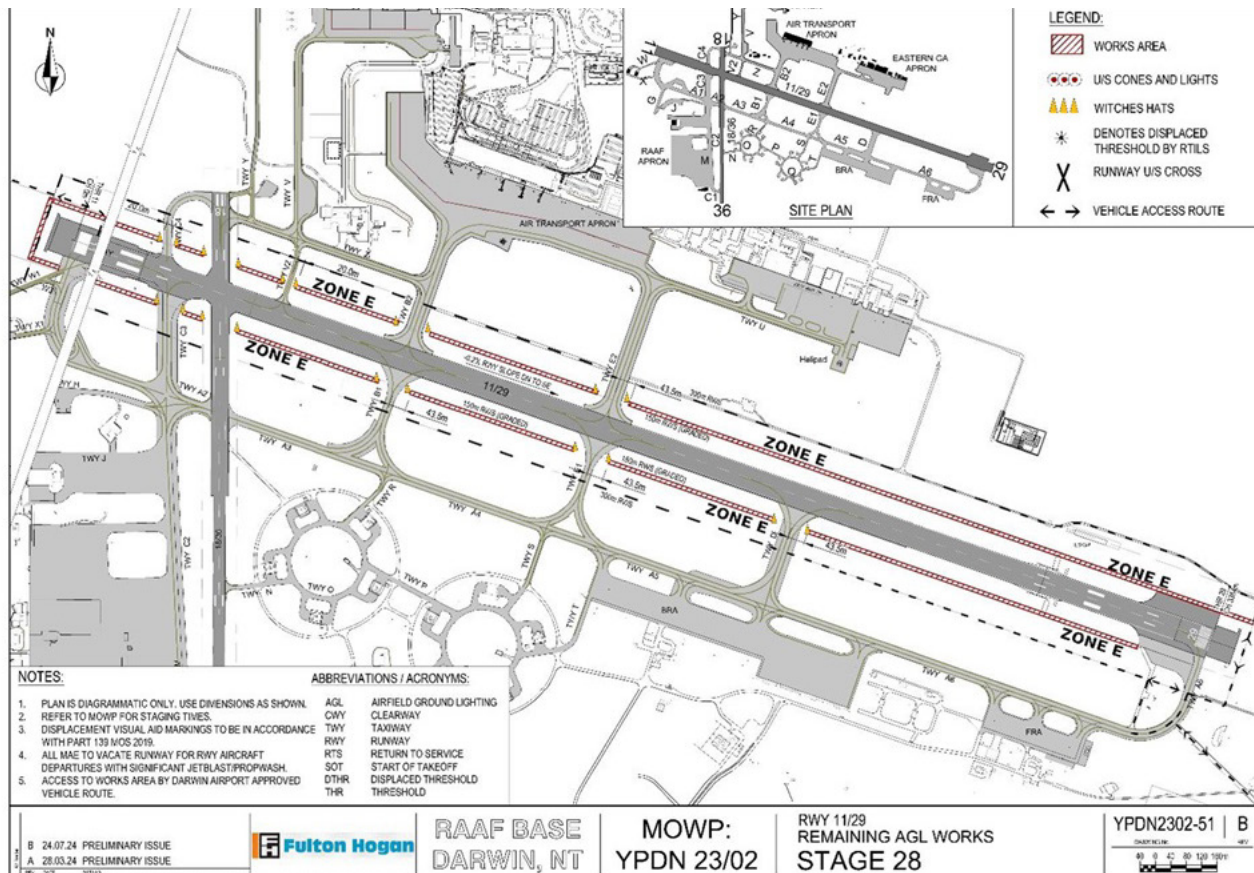
8. DISTRIBUTION

8.1 Airservices Australia website only.

Appendices

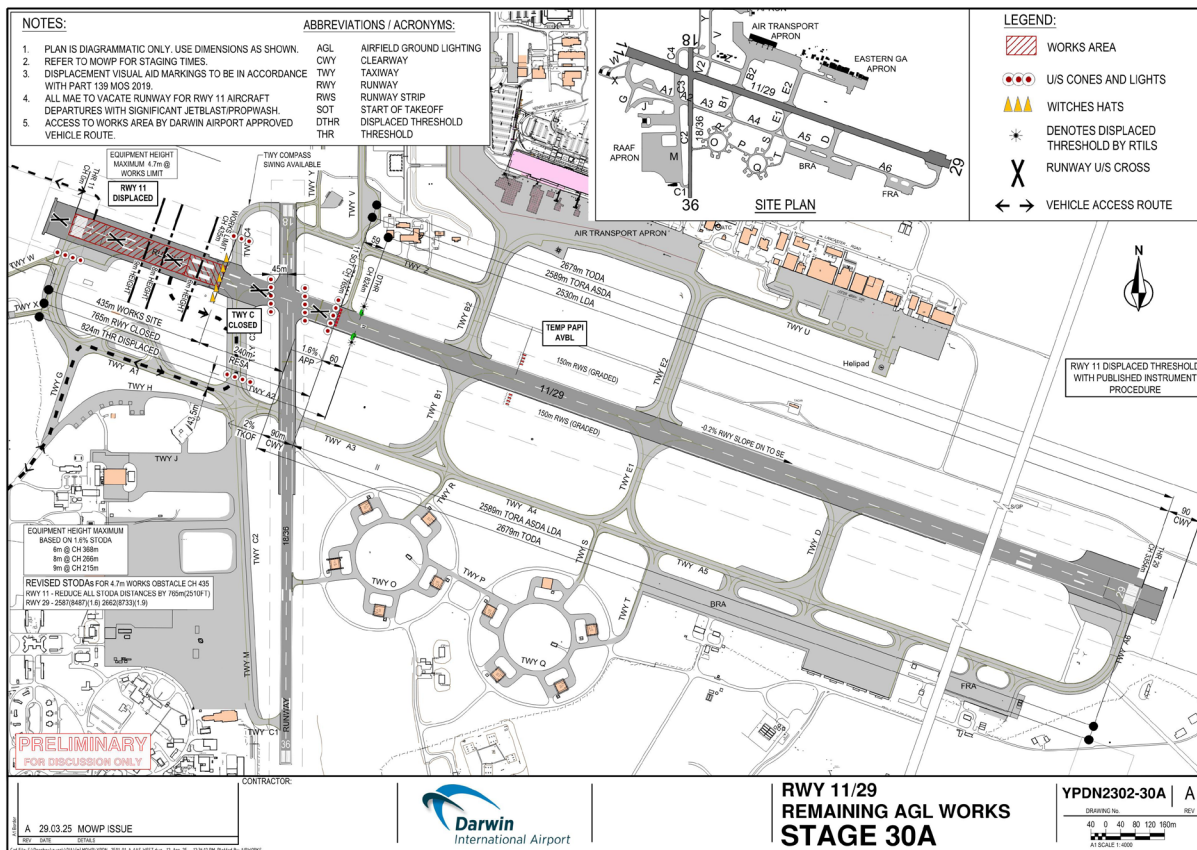
1. Stage 28
2. Stage 30A
3. Stage 30B

1. Stage 28



2. Stage 30A

**Appendix 2 to
SUP H104/25**



3. Stage 30B

Appendix 3 to SUP H104/25

