

**AIP SUPPLEMENT  
(SUP)****H41/24****Effective: 202404282330 UTC**AERONAUTICAL INFORMATION SERVICE,  
AIRSERVICES AUSTRALIA, GPO BOX 367,  
CANBERRA ACT 2601For **DISTRIBUTION** queries, contact:  
Email: [aim\\_editorial@airservicesaustralia.com](mailto:aim_editorial@airservicesaustralia.com)For **CONTENT** queries regarding this SUP, contact:  
Email: [adf.airspace@defence.gov.au](mailto:adf.airspace@defence.gov.au) Phone: 02 6128 4858**FAST JET ACTIVITY, QUEENSLAND  
29 APRIL - 10 MAY 2024****1. INTRODUCTION**

- 1.1 This SUP cancels and replaces SUP H40/24 with immediate effect and with amendments to paras 2.3.1, 4.3, 5.2 and the Y153 diversion route in section 5.
- 1.2 Elements of the Royal Australian Air Force (RAAF) will be conducting high tempo fast jet activity over the period 29 April - 10 May 2024.
- 1.3 This activity will involve a wide range of tactical flying activities with aircraft operating from Amberley aerodrome.
- 1.4 This AIP SUP describes the airspace, timings, diversion routes, access and procedures associated with this activity.

**2. AIRSPACE**

- 2.1 Airspace users should refer to Amberley (AEX) and Brisbane FIR (YBBB) NOTAM to confirm vertical limits and activation timings of Special Use Airspace (SUA).
- 2.2 During the activity period (excluding weekends) the following SUA will be activated by NOTAM.
  - 2.2.1 **Permanent Amberley Restricted Areas (AEX):**

IDENT	VERTICAL LIMITS (AMSL)	HOURS
R639ABCD	10 000 – FL600	NOTAM

2.2.2 Temporary Restricted Area (TRA). The following TRA is established in addition to permanent areas (refer Appendix 1):

**TRA 'NIMBUS'**

**RA2**

**MIL FLYING**

**LATERAL LIMITS:** 265722S 1485538E – 265738S 1494403E – 281000S 1494800E – 291523S 1500721E – 291523S 1492858E – 285713S 1485340E – 265722S 1485538E

**VERTICAL LIMITS:** 10 000FT AMSL – FL600

**HOURS OF ACTIVITY:** NOTAM

**CONTROLLING AUTHORITY:** FLTCDR 452SQN AMBERLEY

**ACTIVATION:** NOTAM

**2.3 Airspace Activation**

2.3.1 Temporary SUA listed in paragraph 2.2.2, shall be activated in accordance with the following table:

<b>Airspace Activation Windows</b>		
<b>Week One</b>		
	<b>Local Time (AEST)</b>	<b>Time (UTC)</b>
<b>MON 29 April – THU 02 May</b>	0930 – 1200 daily	2330 – 0200 daily
	1415 – 1645 daily	0415 – 0645 daily
<b>FRI 03 May</b>	0930 – 1200	2330 – 0200
<b>Week Two</b>		
	<b>Local Time (AEST)</b>	<b>Time (UTC)</b>
<b>MON 06 May</b>	Nil	Nil
<b>TUE 07 May – WED 08 May</b>	0830 – 1030 daily	2230 – 0030 daily
	1330 – 1630 daily	0330 – 0630 daily
<b>THU 09 May</b>	0830 – 1030	2230 – 0030
	1400 – 1730	0400 – 0730
<b>FRI 10 May</b>	Nil	Nil

2.4 Permanent restricted and danger areas may also be activated for other Defence activities in accordance with normal NOTAM requirements.

2.5 General airspace enquiries prior to exercise start can be made to the Joint Airspace Control Cell on 02 6128 4858 during normal business hours (AEST) or via email [adf.airspace@defence.gov.au](mailto:adf.airspace@defence.gov.au).

2.6 During execution, please contact the relevant airspace Controlling Authority or Administering Authority.

### **3. MILITARY AIRCRAFT OPERATIONS**

3.1 Within associated active Danger Areas, high-speed military jet aircraft may be conducting high-speed, abrupt manoeuvres not congruent with rules of the air and not in normal communication.

3.2 Traffic information will not be provided to or about aircraft operating in Danger Areas.

#### **3.3 Noise and sensitive areas**

3.3.1 Military aircraft will plan to avoid known sensitive areas, and comply with Fly Neighbourly Advice.

### **4. ACCESS TO AIRSPACE**

4.1 Access to exercise RA by non-exercise aircraft is not available except for:

- Aircraft operating in the preservation of life or property (MEDEVAC, FFR, POL, SAR)
- Aircraft with a declared emergency.

4.2 All non-participating aircraft shall flight plan IAW diversion routing specified within section 5 of this SUP.

4.3 Aircraft operating within temporary SUA will not receive an Air Traffic Control Service.

### **5. DIVERSION ROUTES**

5.1 The following routes are restricted during TRA 'NIMBUS' activation windows:

- H652
- Q165
- Q238
- Y153
- Y161

Pilots intending to operate on these routes must plan in accordance with the diversion routes specified in the following tables.

There will be nil coincident activation of Williamtown R570 airspace to facilitate diversion routing for TRA 'NIMBUS'.

<b>Affected route</b>	<b>H652</b>
<b>Use diversion route</b>	H652 ALAXU ROM SGE ESLOM GOPVO OVNOM H652
<b>Purpose</b>	Separation from hazardous activities in TRA Nimbus

<b>Affected route</b>	<b>Q165</b>
<b>Use diversion route</b>	Plan on Q165. Expect delays for levels above A100 until north of ROM.
<b>Purpose</b>	Separation from hazardous activities in TRA Nimbus

<b>Affected route</b>	<b>Q238</b>
<b>Use diversion route</b>	LASUD Q293 BINAG UBGAN DUPUG
<b>Purpose</b>	Traffic management due southbound diversion routes

<b>Affected route</b>	<b>Y153</b>
<b>Use diversion route</b>	<b>Above A100</b> Y153 GOBAR 2538S 14850E ROM SGE ESLOM GOPVO OVNOM <b>A100 and below</b> Plan on Y153
<b>Purpose</b>	Separation from hazardous activities in TRA Nimbus

<b>Affected route</b>	<b>Y161</b>
<b>Use diversion route</b>	Y161 SGE ESLOM GOPVO OVNOM
<b>Purpose</b>	Traffic management due southbound diversion routes

5.2 Enquiries relating to diversion routes are to be directed to [atm.director@airservicesaustralia.com](mailto:atm.director@airservicesaustralia.com)

## **6. CANCELLATION**

6.1 This SUP self-cancels at 202405090730 UTC.

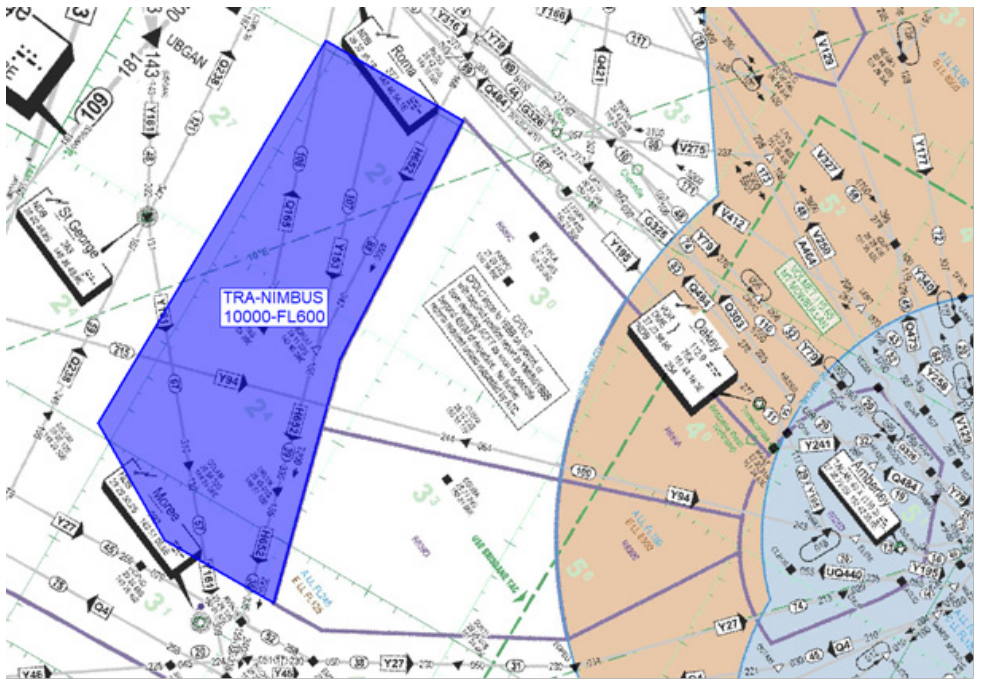
## **7. DISTRIBUTION**

7.1 Airservices Australia website only.

### **Appendices**

1. TRA 'NIMBUS'
2. Airspace Diversion Routes

1. TRA 'NIMBUS'



**2. Airspace Diversion Routes**

