

**AIP SUPPLEMENT
(SUP)****AIRAC****H31/24****Effective: 202403201600 UTC**AERONAUTICAL INFORMATION SERVICE,
AIRSERVICES AUSTRALIA, GPO BOX 367,
CANBERRA ACT 2601For **DISTRIBUTION** queries, contact:
Email: aim_editorial@airservicesaustralia.comFor **CONTENT** queries regarding this SUP, contact:
Email: bas@globalairspaceolutions.com**DARWIN (YPDN) DAP PROCEDURES FOR
TEMPORARY DISPLACED THRESHOLD
RWY 11 - STAGE 8, 10, 12 AND 14****1. INTRODUCTION**

- 1.1 This AIP SUP cancels and replaces SUP H03/24, with changes to reference stages and the estimated cancellation date.
- 1.2 This AIP SUP publishes revised procedures for use during the displaced threshold of RWY 11 at Darwin (YPDN).
- 1.3 The procedures published in this SUP are to be used only when RWY 11 THR is displaced by 1,254M. A NOTAM will be issued to indicate when the threshold is displaced.
- 1.4 RNP R RWY 11 and VOR-R RWY 11 have incorporated the displaced THR RWY 11 of 1,254M.
- 1.5 The existing RWY 11 ALPHA STAR remain unchanged and will be used with the RNP R RWY 11.
- 1.6 Temporary changes to RWY 11 are published by an additional SUP, available online: www.airservicesaustralia.com/aip/aip.asp.

2. IMPLEMENTATION

- 2.1 The procedures in the appendices become effective 202403201600 UTC.

3. NEW DISPLACED THRESHOLD

RWY	LAT	LONG	ELEV
11	122447.04S	1305234.21E	89FT

4. WAYPOINTS

DRWWR	122447.04S	1305234.21E	MAPt RNP R RWY 11
DRWWL	122523.12S	1303933.36E	RIGHT IAF
DRWWN	121627.50S	1304240.45E	LEFT IAF

5. PROCEDURE DIFFERENCES

5.1 The differences between RNP Z RWY 11 and RNP R RWY 11 procedures include:

- Procedure name
- DTHR location and elevation
- IF/IAF NASUX
- Right IAF DRWWL
- Left IAF DRWWN
- MAPt DRWWR
- Holding at NASUX
- Connection to the ALPHA STARs for RWY 11
- FAF altitude
- MDA and visibilities
- Grey shading applied to minima lines
- Distance/altitude table
- Added caution note

5.2 The differences between VOR-Z RWY 11 and VOR-R RWY 11 procedures include:

- Procedure name
- DTHR location and elevation
- FAF altitude
- MDA and visibilities
- Grey shading applied to minima lines
- Distance/altitude table
- Added caution note

6. CANCELLATION

- 6.1 This SUP will be cancelled when all works are completed, expected to be on 12 November 2024.

7. DISTRIBUTION

- 7.1 Airservices Australia website only.

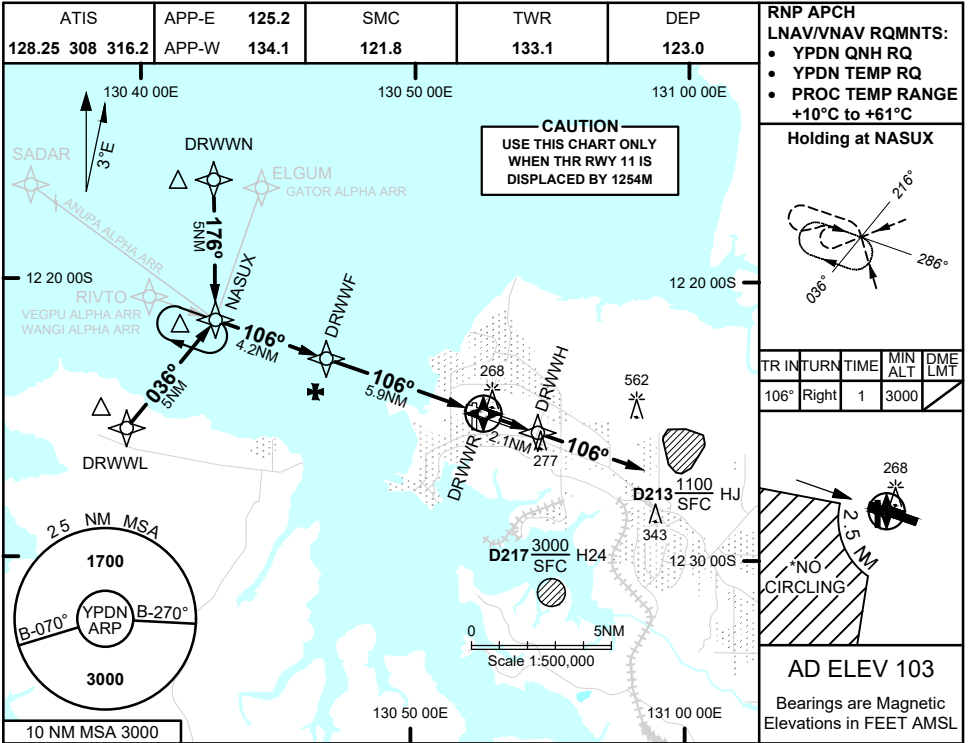
Appendices

1. RNP R RWY 11
2. VOR-R RWY 11

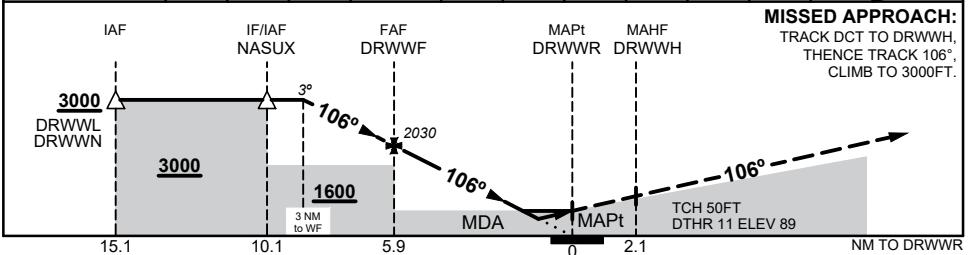
USE QNH

RNP R RWY 11 DARWIN, NT (YPDN)

APPENDIX 1 TO SUP H31/24



NM TO NEXT WPT	3	2	1	DRWWF	5	4	3	2	1.5	1	0.9	DRWWR
ALT (3° APCH PATH)	3000	2670	2350	2030	1730	1410	1090	780	620	460	430	



NOTES

1. MAX IAS:
INITIAL : 210KT
2. **CAUTION:** USE THIS CHART ONLY WHEN THR RWY 11 IS DISPLACED BY 1254M
- *3. NO CIRCLING IN SECTOR SW OF RWY 11/29 AND RWY 18/36 BEYOND 2.5NM

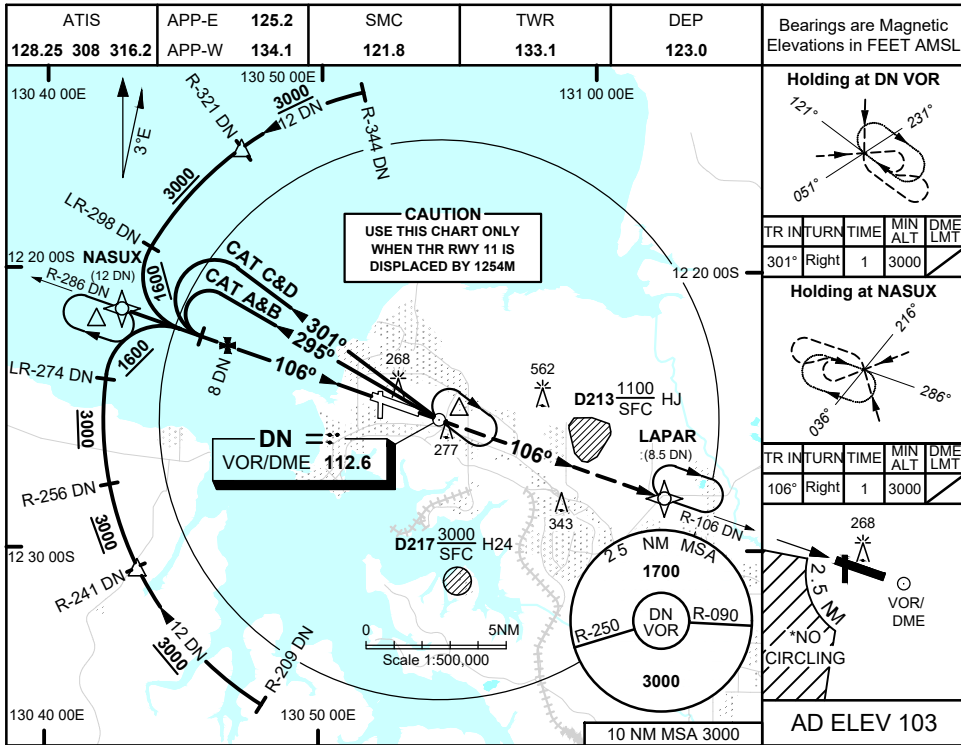
CATEGORY	A	B	C	D
LNAV/VNAV	430 (341 - 1.9)			
LNAV	620 (531 - 3.0)			
CIRCLING*	800 (697 - 2.4)	900 (797 - 4.0)	1100 (997 - 5.0)	
ALTERNATE	(1197 - 4.4)		(1497 - 7.0)	

Changes: NEW PROCEDURE

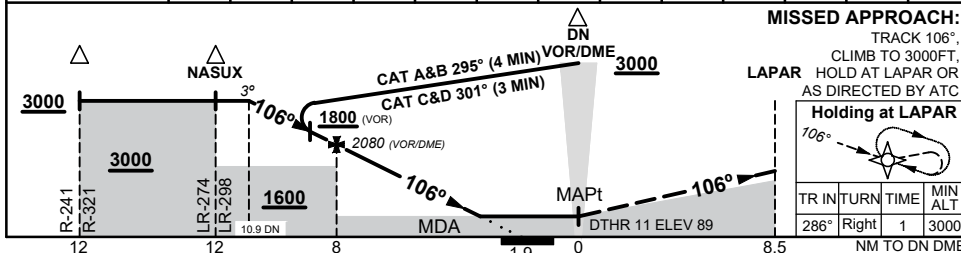
PDNGN22-SUP

**APPENDIX 2
TO SUP H31/24**

**VOR-R RWY 11
DARWIN, NT (YPDN)**



DIST TO DN DME	10.9	10	9	8	7	6	5	4	3.6	3.4		
ALT (3° APCH PATH)	3000	2720	2400	2080	1770	1450	1130	810	670	620		



NOTES

1. MAX IAS:
INITIAL :210KT
2. ACFT MAY BE RADAR VECTORED TO FINAL
3. **CAUTION:** USE THIS CHART ONLY WHEN THR RWY 11 IS DISPLACED BY 1254M
- *4. NO CIRCLING IN SECTOR SW OF RWY 11/29 AND RWY 18/36 BEYOND 2.5 NM

CATEGORY	A	B	C	D
S-I VOR		670 (581 - 3.3)		
S-I VOR/DME		620 (531 - 3.0)		
CIRCLING*	800 (697 - 2.4)	900 (797 - 4.0)		1100 (997 - 5.0)
ALTERNATE	(1197 - 4.4)		(1497 - 7.0)	

Changes: NEW PROCEDURE

PDNV008-SUP