

**AIP SUPPLEMENT
(SUP)****H24/24****Effective: 202402260100 UTC**AERONAUTICAL INFORMATION SERVICE,
AIRSERVICES AUSTRALIA, GPO BOX 367,
CANBERRA ACT 2601For **DISTRIBUTION** queries, contact:
Email: aim_editorial@airservicesaustralia.comFor **CONTENT** queries regarding this SUP, contact:
Email: admin@ozairports.com.au Phone: 0407 721 664**RAAF BASE TINDAL (KTR/YPTN)
RWY 14/32 UPGRADE PHASE 1
DISPLACED THR RWY 14****1. INTRODUCTION**

- 1.1 This SUP cancels and replaces SUP H83/23 with an update to paragraph 1.2, 2.1.1 (j), 3 removal of 2.1.1 (k) and the addition of Appendix 3.
- 1.2 This AIP SUP is to provide notification and operational information to aircraft and ground operations in regard to the RWY 14/32 upgrade works by the Department of Defence from 4 April 2022 through to June 2024 – Phase 1.
- 1.3 The displacement of THR RWY 14 is required to facilitate the RWY extension civil construction works. These construction works include excavation, pavement construction, NAVAID and AGL changes/additions.
- 1.4 All works affecting aircraft operations, including displacement preparation works, will be advised via the distribution of a Method of Working Plan.
- 1.5 The actual date and time of works will be advised by NOTAM.

2. WORK PROGRAMME

- 2.1 Phase 1 - THR RWY 14 displacement (this SUP).
 - 2.1.1 North Western end RWY 14/32
 - a) THR RWY 14 DTHR of 298M will remain in place for the entire period referenced under this SUP.
 - b) No ground workers or equipment are required or permitted within the DTHR RWY 14.

- c) DTHR RWY 14 will comprise of inset lights with the current THR 14 lights extinguished.
- d) RWY 14 PAPI will be relocated to suit displacement and will consist of a single set of four PAPI units on the right hand side of RWY 14.
- e) HIRL within the displacement length will be replaced with blue edge lights to define movement area. Edge light spacings will be even from DTHR RWY 14 through THR RWY 32 - no further edge light changes are required.
- f) RWY 14 HIAL will be removed. SALS to be established from 30 November 2022 to 1 April 2023.
- g) RWY 14 and 32 distance to run markers will be adjusted to suit the shortened RWY.
- h) DTHR RWY 14 will include new line marking - piano keys, RWY designator adjustments to CL markings and new aiming points and the current THR 14 line marking extinguished.
- i) RWY 14 precision approach unavailable - ILS/GP unavailable during displacement period. (LOC available)
- j) Declared distances: Refer ERSA/Runway Distance Supplement - YPTN.

3. ADDITIONAL PHASES

- Phase 2 - RWY 14/32 (Main RWY) Extension Open – June 2024 to 31 March 2026
- Phase 3 - RWY 14L/32R (Temp RWY) Open – 1 April 2026 to 30 November 2027
- Phase 4 - RWY 14/32 (Main RWY) Re-Open – 1 December 2027 - Onwards

4. CANCELLATION

- 4.1 This SUP will be cancelled when the Phase 1 works are complete.

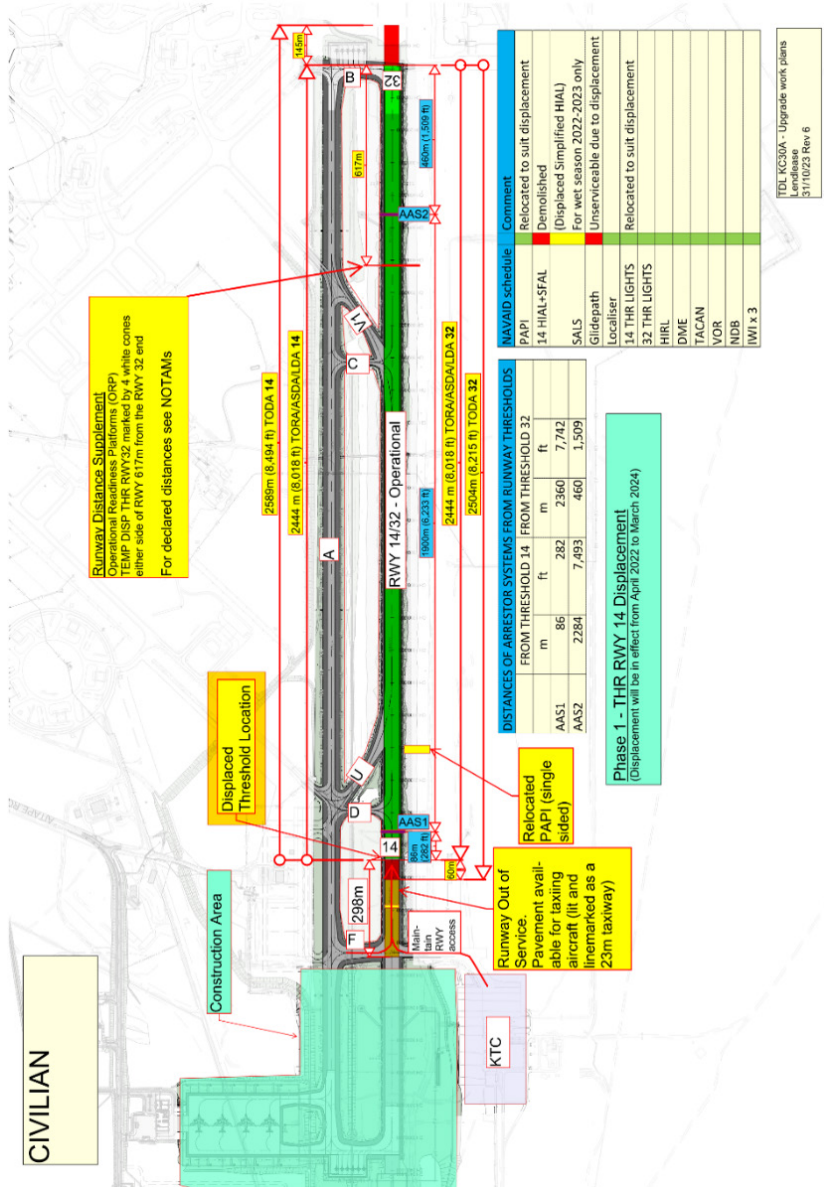
5. DISTRIBUTION

5.1 Airservices Australia website only.

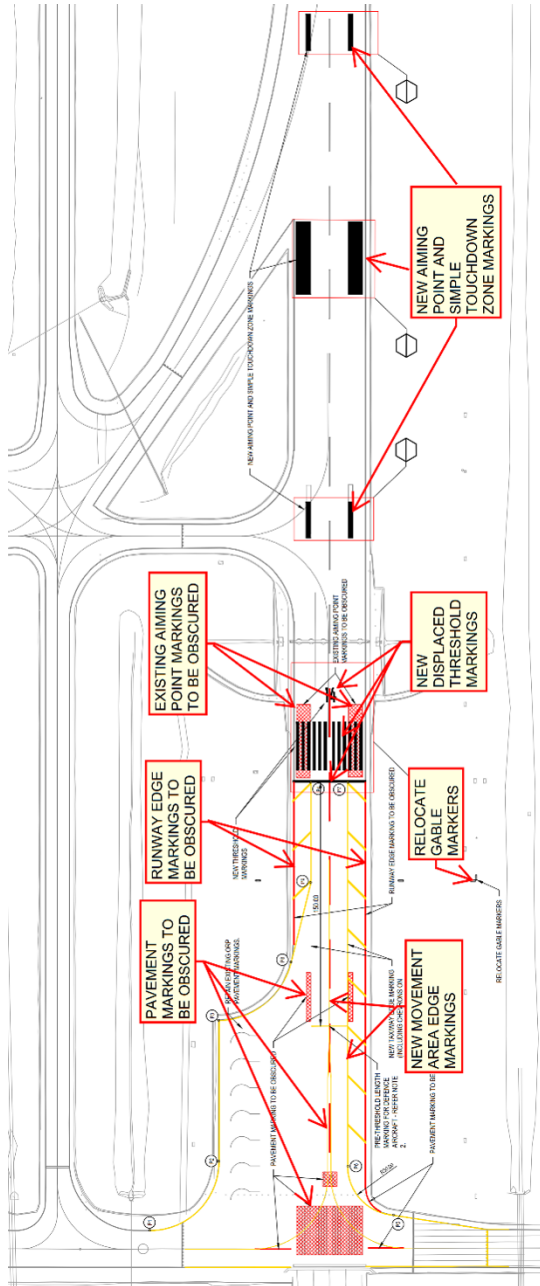
Appendices

1. Layout of THR RWY 14 displacement
2. Linemarking of THR RWY 14 to suit displacement
3. Unserviceability Markers on Runway

1. Layout of THR RWY 14 displacement



2. Linemarking of THR RWY 14 to suit displacement



3. Unserviceability Markers on Runway

