

**AIP SUPPLEMENT
(SUP)****AIRAC****H152/24****Effective: 202411271600 UTC**

AERONAUTICAL INFORMATION SERVICE,
AIRSERVICES AUSTRALIA, GPO BOX 367,
CANBERRA ACT 2601

For **DISTRIBUTION** queries, contact:
Email: aim_editorial@airservicesaustralia.com

For **CONTENT** queries regarding this SUP, contact:
Email: atm_director@airservicesaustralia.com

LEVEL RESTRICTIONS ADDED TO DAP BRISBANE (YBBN) STAR BLAKA AND GOMOL

1. INTRODUCTION

- 1.1 This AIP SUP amends two standard instrument arrival procedures for Brisbane (YBBN) with the introduction of level restrictions.
- 1.2 When in SODPROPS mode, the use of which is expanding beyond night time only, the level restrictions are required to ensure strategic separation with Gold Coast (YBCG) arrivals.
- 1.3 This AIP SUP replaces the following arrivals in DAP:
 - STAR BLAKA FIVE ALPHA ARRIVAL (RNAV) RWY 01L/19R
 - STAR GOMOL THREE ALPHA ARRIVAL (RNAV) RWY 01L/19R
- 1.4 The procedure number for the below STAR will also be amended with no change to the procedures:
 - STAR BLAKA FIVE ALPHA ARRIVAL (RNAV) RWY 01R/19L
 - STAR BLAKA FIVE X-RAY ARRIVAL (RNAV) RWY 01R/19L
 - STAR GOMOL THREE ALPHA ARRIVAL (RNAV) RWY 01R/19L
 - STAR GOMOL THREE VICTOR ARRIVAL (RNAV) RWY 01R/19L
 - STAR GOMOL THREE X-RAY ARRIVAL (RNAV) RWY 01R/19L

2. IMPLEMENTATION

- 2.1 The procedures in the appendices become effective 202411271600 UTC and replaces the same procedures published in DAP.

2.2 Recommended coding sheets for the procedures are available on request.

3. IMPLEMENTATION

3.1 The following new waypoint applies to the BLAKA procedure: Recommended coding sheets for the procedures are available on request.

Waypoint	Latitude	Longitude
OVNEB	273759.04S	1532403.81E

4. CANCELLATION

4.1 This SUP will be cancelled when the new arrival procedures are incorporated into DAP amendment 182, effective AIRAC 20 March 2025.

5. DISTRIBUTION

5.1 Airservices Australia website only.

Appendices

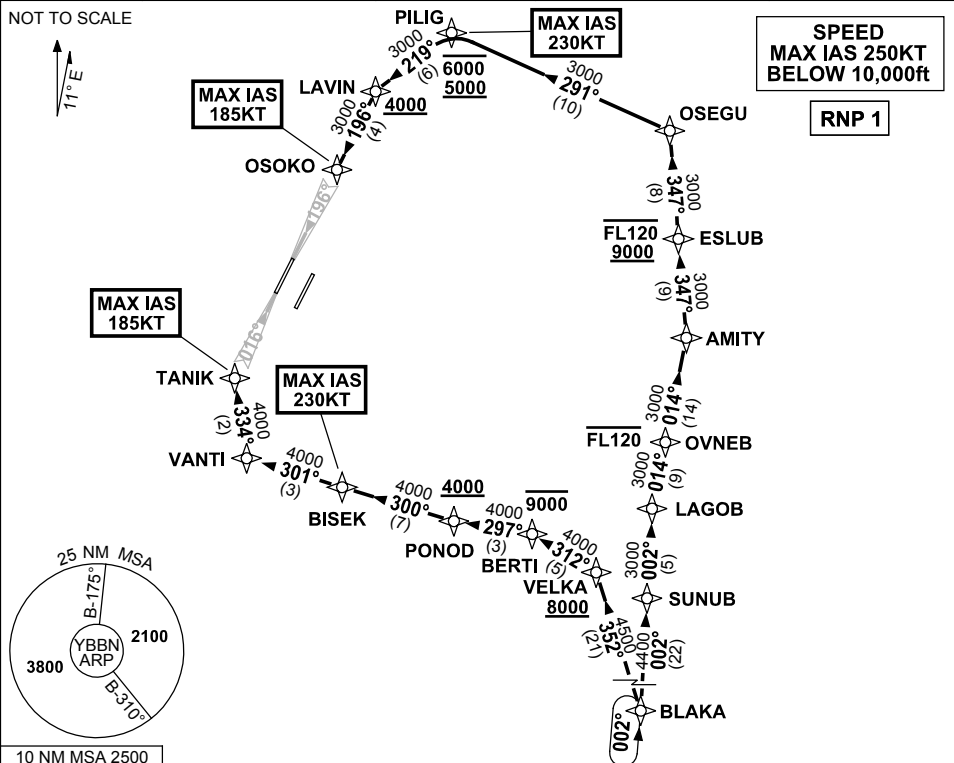
1. STAR BLAKA SIX ALPHA ARRIVAL (RNAV) RWY 01L/19R
2. STAR BLAKA SIX ALPHA ARRIVAL (RNAV) RWY 01R/19L
3. STAR BLAKA SIX X-RAY ARRIVAL (RNAV) RWY 01R/19L
4. STAR GOMOL FOUR ALPHA ARRIVAL (RNAV) RWY 01L/19R
5. STAR GOMOL FOUR ALPHA ARRIVAL (RNAV) RWY 01R/19L
6. STAR GOMOL FOUR VICTOR ARRIVAL (RNAV) RWY 01R/19L
7. STAR GOMOL FOUR X-RAY ARRIVAL (RNAV) RWY 01R/19L

**APPENDIX 1
TO SUP H152/24**

**STANDARD INSTRUMENT ARRIVAL (STAR)
BLAKA SIX ALPHA ARRIVAL (RNAV) RWY 01L/19R
BRISBANE, QLD (YBBN)**

ATIS 113.2 125.5	APP NORTH 124.7 SOUTH 125.6 FINALS 119.25	TWR 01L/19R 118.0 01R/19L 120.5	SMC DOM 121.7 SOUTH 122.25	Bearings are Magnetic Elevations in FEET AMSL
---------------------	--	---------------------------------------	----------------------------------	--

NOT TO SCALE



10 NM MSA 2500

ARRIVAL: BLAKA SIX ALPHA

RWY 01L:

- From BLAKA, track 352° to VELKA
Cross VELKA AT or ABV 8000ft
- Turn LEFT, track 312° to BERTI
Cross BERTI AT or BLW 9000ft
- Turn LEFT, track 297° to PONOD
Cross PONOD AT or ABV 4000ft
- Turn RIGHT, track 300° to BISEK
MAX IAS 230KT AT BISEK
- Track 301° to VANTI
- Turn RIGHT, track 334° to TANIK for ILS,
RNP Z or LOC RWY 01L approach
MAX IAS 185KT AT TANIK

RWY 19R:

- From BLAKA, track 002° to SUNUB
- Track 002° to LAGOB
- Turn RIGHT, track 014° to OVNEB
Cross OVNEB AT or BLW FL120
- Track 014° to AMITY
- Turn LEFT, track 347° to ESLUB
Cross ESLUB BTN 9000ft and FL120
- Turn LEFT, track 347° to OSEGU
- Turn LEFT, track 291° to PILIG
Cross PILIG BTN 5000FT and 6000ft
MAX IAS 230KT AT PILIG
- Turn LEFT, track 219° to LAVIN
Cross LAVIN AT or ABV 4000ft
- Turn LEFT, track 196° to OSOKO for ILS,
RNP Z or LOC RWY 19R approach
MAX IAS 185KT AT OSOKO

**COMMUNICATIONS FAILURE: PROCEDURE IN IMC
IF ABLE CTC BN ATC ON TEL: (07) 3866-3694**

- Squawk 7600, comply with vertical navigation requirements, but not below MSA.
- Track via the latest STAR clearance to the nominated runway, then fly the most suitable approach in accordance with ERSA EMERG Section 1.5.

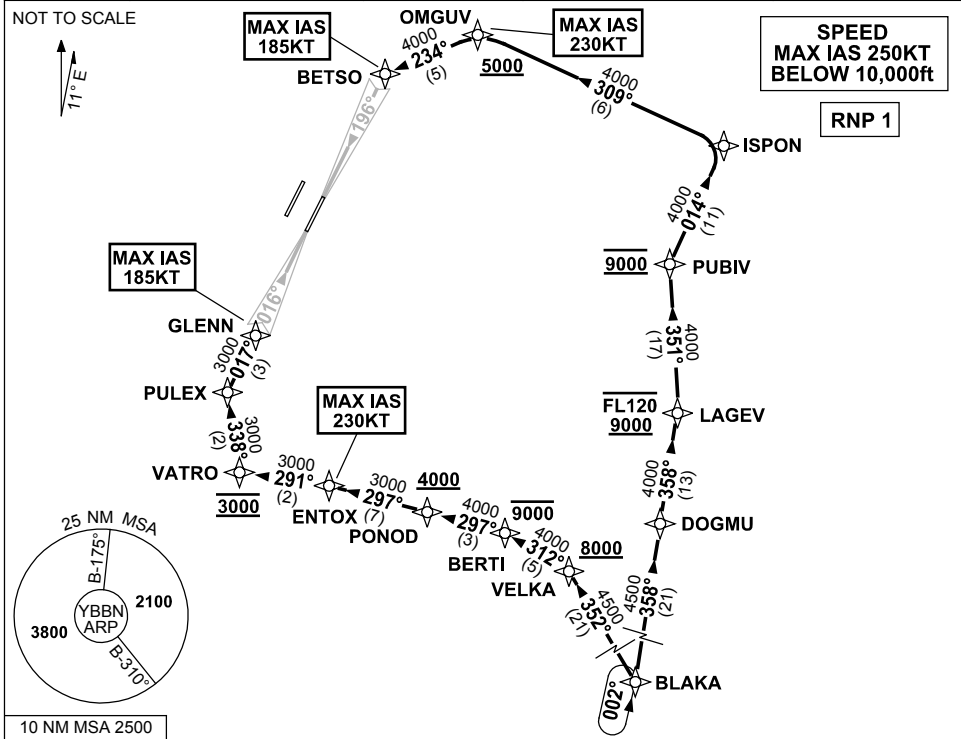
Changes: OVNEB WPT.

BBNSR38-SUP

**APPENDIX 2
TO SUP H152/24**

**STANDARD INSTRUMENT ARRIVAL (STAR)
BLAKA SIX ALPHA ARRIVAL (RNAV) RWY 01R/19L
BRISBANE, QLD (YBBN)**

ATIS 113.2 125.5	APP NORTH 124.7 SOUTH 125.6 FINALS 119.25	TWR 01R/19L 120.5 01L/19R 118.0	SMC DOM 121.7 SOUTH 122.25	Bearings are Magnetic Elevations in FEET AMSL
---------------------	--	---------------------------------------	----------------------------------	--



ARRIVAL: BLAKA SIX ALPHA

RWY 01R:

- From BLAKA, track 352° to VELKA
Cross VELKA AT or ABV 8000ft
- Turn LEFT, track 312° to BERTI
Cross BERTI AT or BLW 9000ft
- Turn LEFT, track 297° to PONOD
Cross PONOD AT or ABV 4000ft
- Track 297° to ENTOX
MAX IAS 230KT AT ENTOX
- Turn LEFT, track 291° to VATRO
Cross VATRO AT 3000FT
- Turn RIGHT, track 338° to PULEX
- Turn RIGHT, track 017° to GLENN for ILS,
RNP Z, LOC or RNP T RWY 01R approach
MAX IAS 185KT AT GLENN

RWY 19L:

- From BLAKA, track 358° to DOGMU
- Track 358° to LAGEV
Cross LAGEV BTN 9000ft and FL120
- Turn LEFT, track 351° to PUBIV
Cross PUBIV AT 9000ft
- Turn RIGHT, track 014° to ISPON
- Turn LEFT, track 309° to OMGUV
Cross OMGUV AT or ABV 5000ft
MAX IAS 230KT AT OMGUV
- Turn LEFT, track 234° to BETSO for ILS,
RNP Z, LOC or RNP T RWY 19L approach
MAX IAS 185KT AT BETSO

**COMMUNICATIONS FAILURE: PROCEDURE IN IMC
IF ABLE CTC BN ATC ON TEL: (07) 3866-3694**

- Squawk 7600, comply with vertical navigation requirements, but not below MSA.
- Track via the latest STAR clearance to the nominated runway, then fly the most suitable approach in accordance with ERSA EMERG Section 1.5.

Changes: VALIDITY INDICATOR.

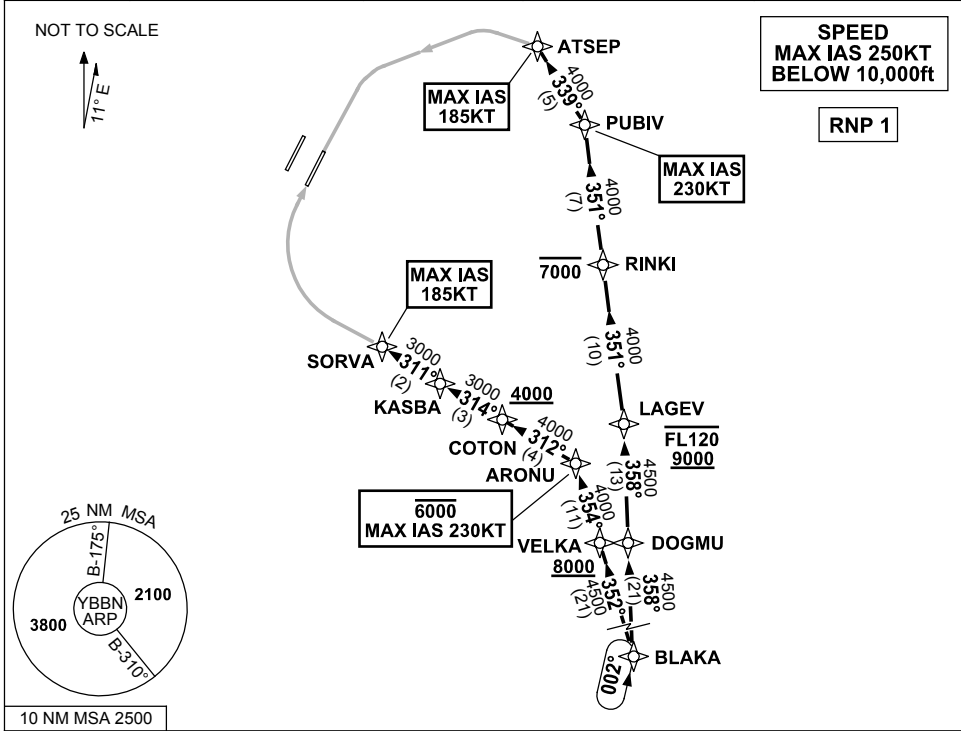
BBNSR46-SUP



**APPENDIX 3
TO SUP H152/24**

**STANDARD INSTRUMENT ARRIVAL (STAR)
BLAKA SIX X-RAY ARRIVAL (RNAV) RWY 01R/19L
BRISBANE, QLD (YBBN)**

ATIS 113.2 125.5	APP NORTH SOUTH FINALS 124.7 125.6 119.25	TWR 01R/19L 120.5 01L/19R 118.0	SMC DOM SOUTH 121.7 122.25	Bearings are Magnetic Elevations in FEET AMSL
---------------------	---	---------------------------------------	----------------------------------	--



ARRIVAL: BLAKA SIX X-RAY

RWY 01R:

- From BLAKA, track 352° to VELKA
Cross VELKA AT or ABV 8000ft
- Turn RIGHT, track 354° to ARONU
Cross ARONU AT or BLW 6000ft
MAX IAS 230KT AT ARONU
- Turn LEFT, track 312° to COTON
Cross COTON AT or ABV 4000ft
- Turn RIGHT, track 314° to KASBA
- Turn LEFT, track 311° to SORVA for the
RNP X or RNP S RWY 01R (AR) approach
MAX IAS 185KT AT SORVA

RWY 19L:

- From BLAKA, track 358° to DOGMU
- Turn LEFT, track 358° to LAGEV
Cross LAGEV BTN 9000ft and FL120
- Turn LEFT, track 351° to RINKI
Cross RINKI AT or BLW 7000ft
- Track 351° to PUBIV
MAX IAS 230KT AT PUBIV
- Turn LEFT, track 339° to ATSEP for the
RNP X or RNP S RWY 19L (AR) approach
MAX IAS 185KT AT ATSEP

**COMMUNICATIONS FAILURE: PROCEDURE IN IMC
IF ABLE CTC BN ATC ON TEL: (07) 3866-3694**

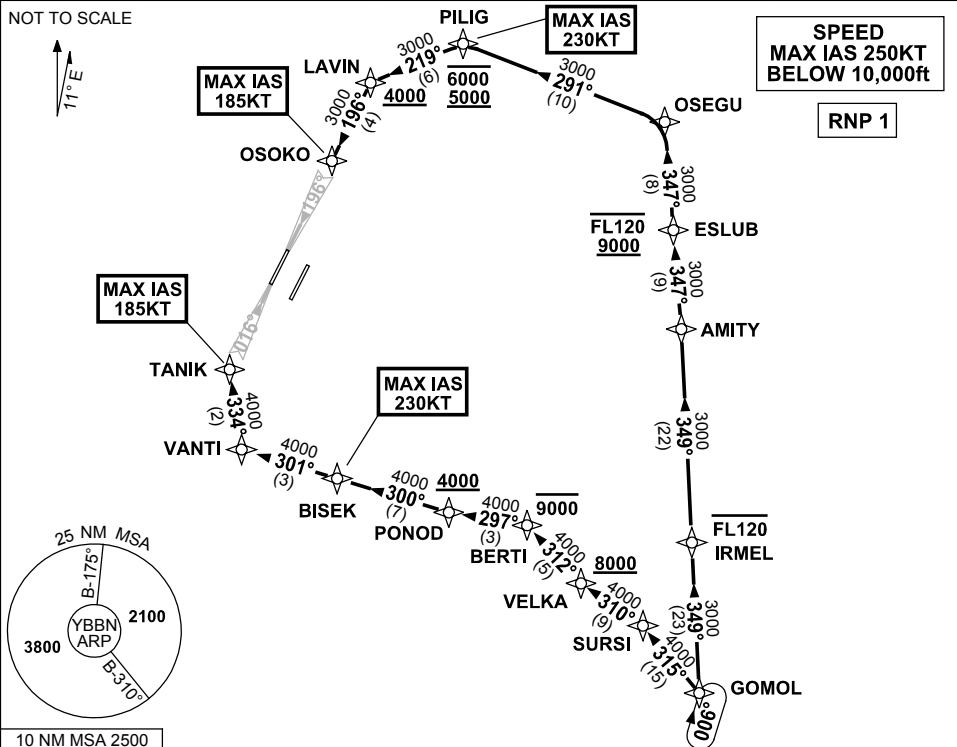
- Squawk 7600, comply with vertical navigation requirements, but not below MSA.
- Track via the latest STAR clearance to the nominated runway, then fly the most suitable approach in accordance with ERSA EMERG Section 1.5.

**APPENDIX 4
TO SUP H152/24**

**STANDARD INSTRUMENT ARRIVAL (STAR)
GOMOL FOUR ALPHA ARRIVAL (RNAV) RWY 01L/19R
BRISBANE, QLD (YBBN)**

ATIS 113.2 125.5	APP NORTH 124.7 SOUTH 125.6 FINALS 119.25	TWR 01L/19R 118.0 01R/19L 120.5	SVC DOM 121.7 SOUTH 122.25	Bearings are Magnetic Elevations in FEET AMSL
---------------------	--	---------------------------------------	----------------------------------	--

NOT TO SCALE



**ARRIVAL: GOMOL FOUR ALPHA
RWY 01L:**

- From GOMOL, track 315° to SURSI
- Turn LEFT, track 310° to VELKA
Cross VELKA AT or ABV 8000ft
- Turn RIGHT, track 312° to BERTI
Cross BERTI AT or BLW 9000ft
- Turn LEFT, track 297° to PONOD
Cross PONOD AT or ABV 4000ft
- Turn RIGHT, track 300° to BISEK
MAX IAS 230KT AT BISEK
- Track 301° to VANTI
- Turn RIGHT, track 334° to TANIK for ILS,
RNP Z or LOC RWY 01L approach
MAX IAS 185KT AT TANIK

RWY 19R:

- From GOMOL, track 349° to IRMEL
Cross IRMEL AT or BLW FL120
- Track 349° to AMITY
- Turn LEFT, track 347° to ESLUB
Cross ESLUB BTN 9000ft and FL120
- Track 347° to OSEGU
- Turn LEFT, track 291° to PILIG
Cross PILIG BTN 5000ft and 6000ft
MAX IAS 230KT AT PILIG
- Turn LEFT, track 219° to LAVIN
Cross LAVIN AT or ABV 4000ft
- Turn LEFT, track 196° to OSOKO for ILS,
RNP Z or LOC RWY 19R approach
MAX IAS 185KT AT OSOKO

**COMMUNICATIONS FAILURE: PROCEDURE IN IMC
IF ABLE CTC BN ATC ON TEL: (07) 3866-3694**

- Squawk 7600, comply with vertical navigation requirements, but not below MSA.
- Track via the latest STAR clearance to the nominated runway, then fly the most suitable approach in accordance with ERSA EMERG Section 1.5.

Changes: VERTICAL REQUIREMENT AT IRMEL.

BBNSR47-SUP

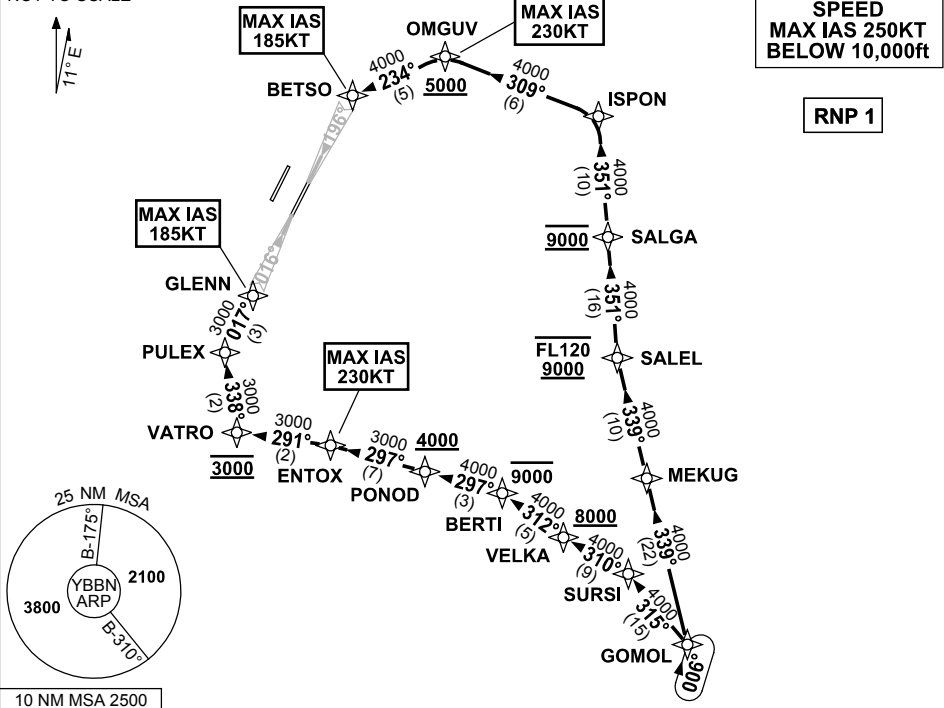


**APPENDIX 5
TO SUP H152/24**

**STANDARD INSTRUMENT ARRIVAL (STAR)
GOMOL FOUR ALPHA ARRIVAL (RNAV) RWY 01R/19L
BRISBANE, QLD (YBBN)**

ATIS 113.2 125.5	APP NORTH 124.7 SOUTH 125.6 FINALS 119.25	TWR 01R/19L 120.5 01L/19R 118.0	SMC DOM 121.7 SOUTH 122.25	Bearings are Magnetic Elevations in FEET AMSL
---------------------	--	---------------------------------------	----------------------------------	--

NOT TO SCALE



**ARRIVAL: GOMOL FOUR ALPHA
RWY 01R:**

- From GOMOL, track 315° to SURSI
- Turn LEFT, track 310° to VELKA
Cross VELKA AT or ABV 8000ft
- Turn RIGHT, track 312° to BERTI
Cross BERTI AT or BLW 9000ft
- Turn LEFT, track 297° to PONOD
Cross PONOD AT or ABV 4000ft
- Track 297° to ENTOX
MAX IAS 230KT AT ENTOX
- Turn LEFT, track 291° to VATRO
Cross VATRO AT 3000ft
- Turn RIGHT, track 338° to PULEX
- Turn RIGHT, track 017° to GLENN for ILS,
RNP Z, LOC or RNP T RWY 01R approach
MAX IAS 185KT AT GLENN

RWY 19L:

- From GOMOL, track 339° to MEKUG
- Track 339° to SALEL
Cross SALEL BTN 9000ft and FL120
- Turn RIGHT, track 351° to SALGA
Cross SALGA AT 9000ft
- Track 351° to ISPON
- Turn LEFT, track 309° to OMGUV
Cross OMGUV AT or ABV 5000ft
MAX IAS 230KT AT OMGUV
- Turn LEFT, track 315° to SURSI
- Turn LEFT, track 309° to ISPON
RNP Z, LOC or RNP T RWY 19L approach
MAX IAS 185KT AT BETSO

**COMMUNICATIONS FAILURE: PROCEDURE IN IMC
IF ABLE CTC BN ATC ON TEL: (07) 3866-3694**

- Squawk 7600, comply with vertical navigation requirements, but not below MSA.
- Track via the latest STAR clearance to the nominated runway, then fly the most suitable approach in accordance with ERSA EMERG Section 1.5.

Changes: VALIDITY INDICATOR.

BBNSR48-SUP

**APPENDIX 6
TO SUP H152/24**

**STANDARD INSTRUMENT ARRIVAL (STAR)
GOMOL FOUR VICTOR ARRIVAL (RNAV) RWY 01R/19L
BRISBANE, QLD (YBBN)**

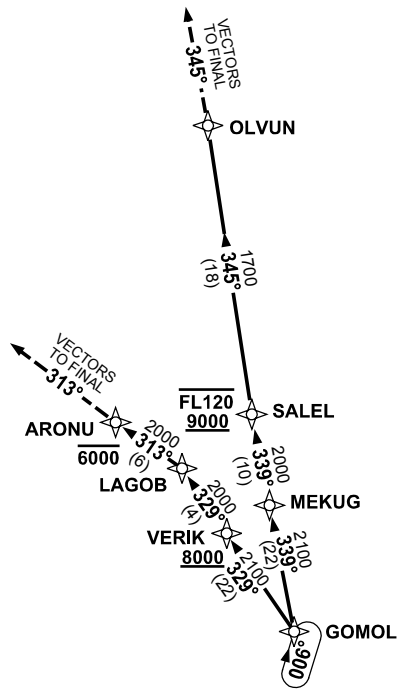
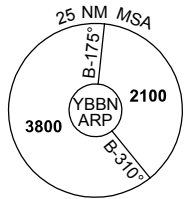
ATIS 113.2 125.5	APP NORTH 124.7 SOUTH 125.6 FINALS 119.25	TWR 01R/19L 120.5 01L/19R 118.0	SMC DOM 121.7 SOUTH 122.25	Bearings are Magnetic Elevations in FEET AMSL
---------------------	--	---------------------------------------	----------------------------------	--

NOT TO SCALE



**SPEED
MAX IAS 250KT
BELOW 10,000ft**

RNP 1



10 NM MSA 2500

ARRIVAL: GOMOL FOUR VICTOR

RWY 01R:

- From GOMOL, track 329° to VERIK
Cross VERIK AT or ABV 8000ft
- Track 329° to LAGOB
- Turn LEFT, track 313° to ARONU
Cross ARONU AT or BLW 6000ft
- Track 313°, EXPECT radar vectors to final

RWY 19L:

- From GOMOL, track 339° to MEKUG
- Track 339° to SALEL
Cross SALEL BTN 9000ft and FL120
- Turn RIGHT, track 345° to OLVUN
- Track 345°, EXPECT radar vectors to final

**COMMUNICATIONS FAILURE: PROCEDURE IN IMC
IF ABLE CTC BN ATC ON TEL: (07) 3866-3694**

- Squawk 7600, comply with vertical navigation requirements, but not below MSA.
- Track via the latest STAR clearance to the nominated runway, then fly the most suitable approach in accordance with ERSA EMERG Section 1.5.

Changes: VALIDITY INDICATOR.

BBNSR50-SUP

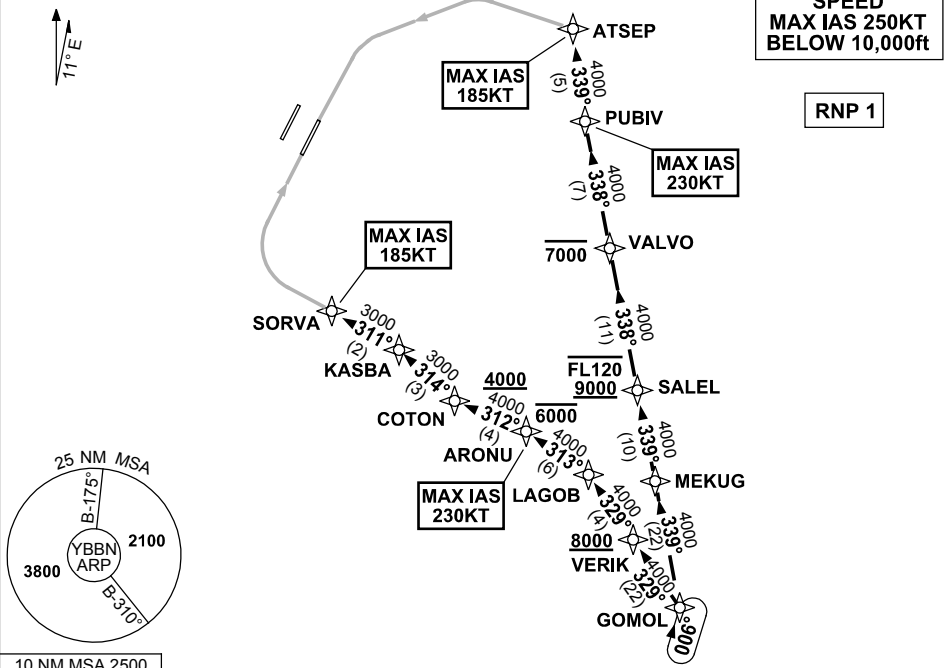


**APPENDIX 7
TO SUP H152/24**

**STANDARD INSTRUMENT ARRIVAL (STAR)
GOMOL FOUR X-RAY ARRIVAL (RNAV) RWY 01R/19L
BRISBANE, QLD (YBBN)**

ATIS 113.2 125.5	APP NORTH 124.7 SOUTH 125.6 FINALS 119.25	TWR 01R/19L 120.5 01L/19R 118.0	SMC DOM 121.7 SOUTH 122.25	Bearings are Magnetic Elevations in FEET AMSL
---------------------	--	---------------------------------------	----------------------------------	--

NOT TO SCALE



ARRIVAL: GOMOL FOUR X-RAY

RWY 01R:

- From GOMOL, track 329° to VERIK
Cross VERIK AT or ABV 8000ft
- Track 329° to LAGOB
- Turn LEFT, track 313° to ARONU
Cross ARONU AT or BLW 6000ft
MAX IAS 230KT AT ARONU
- Turn LEFT, track 312° to COTON
Cross COTON AT or ABV 4000ft
- Turn RIGHT, track 314° to KASBA
- Turn LEFT, track 311° to SORVA for the
RNP X or RNP S RWY 01R (AR) approach
MAX IAS 185KT AT SORVA

RWY 19L:

- From GOMOL, track 339° to MEKUG.
- Track 339° to SALEL
Cross SALEL BTN 9000ft and FL120
- Track 338° to VALVO
Cross VALVO AT or BLW 7000ft
- Track 338° to PUBIV
MAX IAS 230KT AT PUBIV
- Turn RIGHT, track 339° to ATSEP for
RNP X or RNP S RWY 19L (AR) approach
MAX IAS 185KT AT ATSEP

**COMMUNICATIONS FAILURE: PROCEDURE IN IMC
IF ABLE CTC BN ATC ON TEL: (07) 3866-3694**

- Squawk 7600, comply with vertical navigation requirements, but not below MSA.
- Track via the latest STAR clearance to the nominated runway, then fly the most suitable approach in accordance with ERSA EMERG Section 1.5.

Changes: VALIDITY INDICATOR.

BBNSR49-SUP