

**AIP SUPPLEMENT
(SUP)****AIRAC****H49/23****Effective: 202310041600 UTC**AERONAUTICAL INFORMATION SERVICE,
AIRSERVICES AUSTRALIA, GPO BOX 367,
CANBERRA ACT 2601For **DISTRIBUTION** queries, contact:
Email: aim_editorial@airservicesaustralia.comFor **CONTENT** queries regarding this SUP, contact:Email: bas@globalairspaceolutions.com**DARWIN (YPDN) DAP PROCEDURES FOR
TEMPORARY DISPLACED THRESHOLD
RWY 29 – STAGE 3****1. INTRODUCTION**

- 1.1 This AIP SUP publishes revised procedures for use during the displaced threshold of RWY 29 at Darwin (YPDN).
- 1.2 The procedures published in this SUP are to be used only when RWY 29 THR is displaced by 1,354M. A NOTAM will be issued to indicate when the threshold is displaced.
- 1.3 RNP R RWY 29 and VOR-R RWY 29 have incorporated the displaced THR RWY 29 of 1,354M.
- 1.4 Temporary changes to RWY 29 are published by an additional SUP, available online: www.airservicesaustralia.com/aip/aip.asp.

2. IMPLEMENTATION

- 2.1 The procedures in the appendices become effective 202310041600 UTC.

3. NEW DISPLACED THRESHOLD

RWY	LAT	LONG	ELEV
29	122454.91S	1305257.58E	90FT

4. WAYPOINTS

DRWER	122454.91S	1305257.58E	MAPt RNP R RWY 29
-------	------------	-------------	-------------------

5. PROCEDURE DIFFERENCES

- 5.1 The differences between RNP Z RWY 29 and RNP R RWY 29 procedures include:
- Procedure name
 - DTHR location and elevation
 - MAPt DRWER
 - FAF altitude
 - Distance/altitude table
 - Added caution note
- 5.2 The differences between VOR-Z RWY 29 and VOR-R RWY 29 procedures include:
- Procedure name
 - DTHR location and elevation
 - FAF altitude
 - MDA and visibilities
 - Distance/altitude table
 - Added caution note

6. CANCELLATION

- 6.1 This SUP will be cancelled when Stage 3 works are complete, expected to be on 6 December 2023.

7. DISTRIBUTION

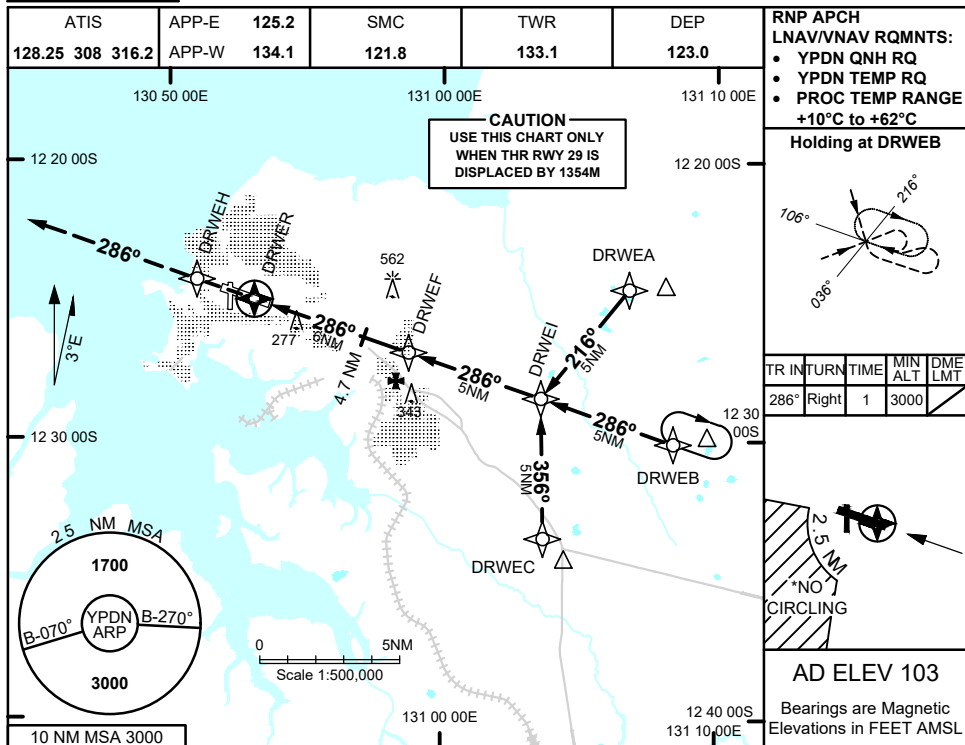
- 7.1 Airservices Australia website only.

Appendices

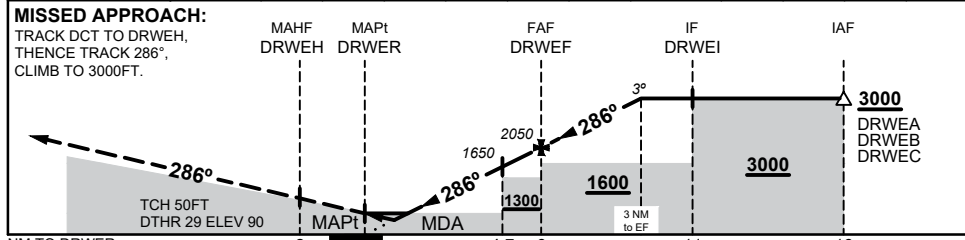
1. RNP R RWY 29
2. VOR-R RWY 29

**APPENDIX 1
TO SUP H49/23**

**RNP R RWY 29
DARWIN, NT (YPDN)**



NM TO NEXT WPT	DRWEH	1	1.5	2	3	4.7	5	DRWEF	1	2	3
ALT (3° APCH PATH)		460	630	780	1100	1650	1730	2050	2370	2690	3000



NOTES

1. MAX IAS:
INITIAL : 210KTS
2. **CAUTION:** USE THIS CHART ONLY WHEN THR RWY 29 IS DISPLACED BY 1354M
- *3. NO CIRCLING IN SECTOR SW OF RWY 11/29 AND RWY 18/36 BEYOND 2.5 NM

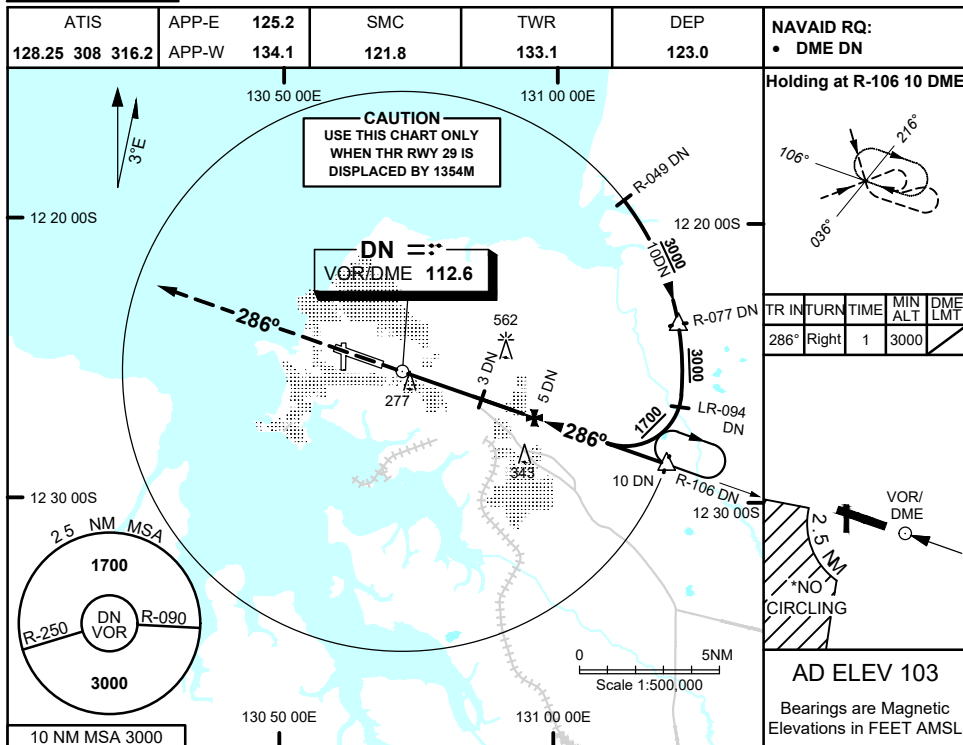
CATEGORY	A	B	C	D
LNAV/VNAV	460 (370 - 2.1)			
LNAV	630 (540 - 3.0)			
CIRCLING*	800 (697 - 2.4)	900 (797 - 4.0)	1100 (997 - 5.0)	
ALTERNATE	(1197 - 4.4)		(1497 - 7.0)	

Changes: NEW PROCEDURE

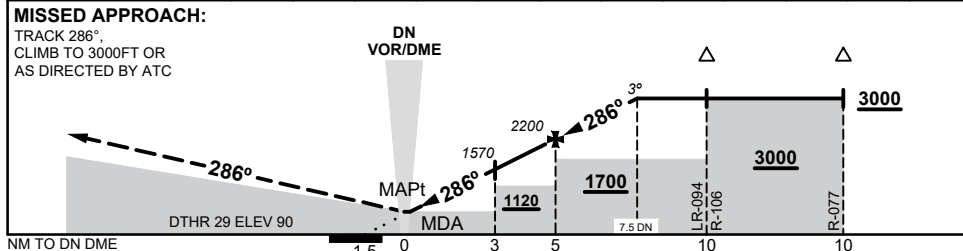
PDNGN21-SUP

**APPENDIX 2
TO SUP H49/23**

**VOR-R RWY 29
DARWIN, NT (YPDN)**



DIST TO DN DME	0.3	1	2	3	4	5	6	7	7.5				
ALT (3° APCH PATH)	720	930	1250	1570	1880	2200	2520	2840	3000				



NOTES

1. ACFT MAY BE RADAR VECTORED TO FINAL
2. **CAUTION:** USE THIS CHART ONLY WHEN THR RWY 29 IS DISPLACED BY 1354M
- *3. NO CIRCLING IN SECTOR SW OF RWY 11/29 AND RWY 18/36 BEYOND 2.5 NM

CATEGORY	A	B	C	D
S-I VOR/DME	720 (630 - 3.5)			
CIRCLING*	800 (697 - 2.4)		900 (797 - 4.0) 1100 (997 - 5.0)	
ALTERNATE#	(1197 - 4.4)		(1297 - 6.0) (1497 - 7.0)	

Changes: NEW PROCEDURE

PDNV007-SUP