

**AIP SUPPLEMENT
(SUP)****AIRAC****H63/22****Effective: 202206151600 UTC**

AERONAUTICAL INFORMATION SERVICE,
AIRSERVICES AUSTRALIA, GPO BOX 367,
CANBERRA ACT 2601

For **DISTRIBUTION** queries, contact:
Email: aim_editorial@airservicesaustralia.com

For **CONTENT** queries regarding this SUP, contact:
Email: contactamp@airservicesaustralia.com

APPROACH SERVICE AT ROCKHAMPTON (YBRK) AND MACKAY (YBMK)

1. INTRODUCTION

- 1.1 This SUP cancels and replaces SUP H36/22 with a correction made to the effective date in para 4.1.
- 1.2 This AIP SUP details the changes to the airspace classification, including the Air Traffic Services and procedures for Rockhampton Approach and Mackay Approach. It clarifies the current airspace arrangements and future arrangements.

2. BACKGROUND

- 2.1 A tower service operates at Rockhampton and Mackay aerodromes during hours specified in *ERSA*. During tower hours, the airspace surrounding the tower controlled airspace is managed by en route (ENR) sectors at Brisbane Centre.
- 2.2 In 2013 a surveillance approach service was introduced overnight at Rockhampton, and in early 2014 for Mackay, to provide APP (surveillance) services outside of tower hours. During tower, the airspace surrounding the tower airspace continued to be managed by ENR sectors.
- 2.3 A program has now commenced to provide an APP (surveillance) service at Rockhampton and Mackay during tower hours. Outside of tower hours, the airspace in the vicinity of the aerodromes will revert to Class G airspace with ENR providing ATS in Class G and the adjacent Class C and E airspace. The planned changes will commence 16 June 2022.

3. AIRSPACE MANAGEMENT

3.1 The airspace around Rockhampton and Mackay can be managed in two operating modes:

3.1.1 Tower and Approach operating

- Standard operations with mostly daytime activity. Current hours of operation detailed in *ERSA* with further details provided in Appendix 5 (Rockhampton) and Appendix 8 (Mackay).

3.1.2 Tower and Approach closed

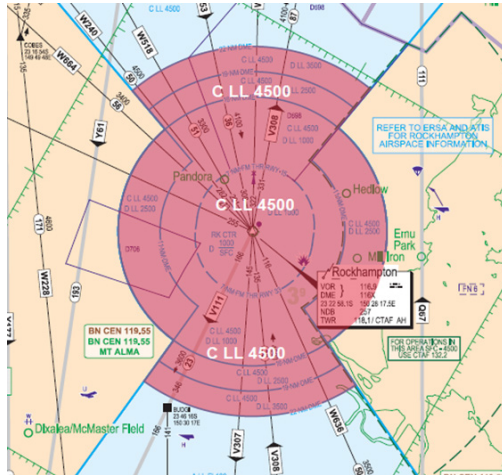
- Area surveillance service provided by Brisbane Centre. Further details provided in Appendix 5 (Rockhampton) and Appendix 8 (Mackay).

4. CHANGE DESCRIPTION

4.1 Until 202206151600 UTC, the current approach control service provided at Rockhampton and Mackay outside of the respective tower hours remains unchanged. After 202206151600 UTC the approach control unit will operate during published tower hours and Air Traffic Services outside of tower hours will be provided by Brisbane Centre.

5. ROCKHAMPTON AIRSPACE

- 5.1 From 202206151600 UTC until Rockhampton tower opens then daily outside tower hours:
- Rockhampton airspace 4,500FT AMSL and below receives a Class G service (refer Figure 1).
 - CTAF procedures apply at Rockhampton.



NOT TO BE USED FOR NAVIGATION

**Figure 1: Rockhampton airspace when ATS provided by Brisbane Centre
(Tower and Approach not operating)**

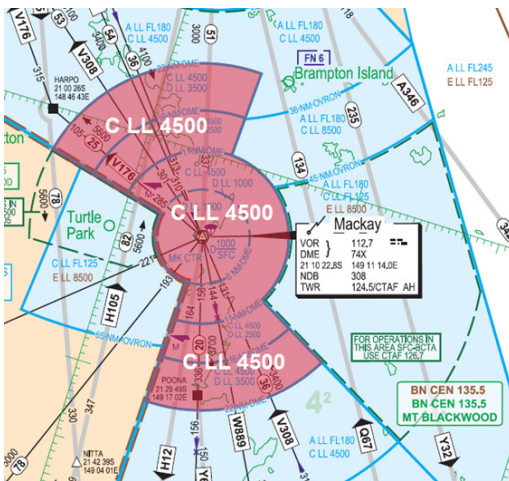
5.2 Rockhampton AIP Changes

5.2.1 Amend AIP ERSAs FAC R (ROCKHAMPTON) sections as follows:

- Replace ATS AND AERODROME COMMUNICATIONS FACILITIES with Appendix 5.
- Amend LOCAL TRAFFIC REGULATIONS as detailed in Appendix 6.
- Add new Section 4 to FLIGHT PROCEDURES as detailed in Appendix 7.

6. MACKAY AIRSPACE

- 6.1 From 202206151600 UTC until Mackay tower opens then daily outside tower hours:
- Mackay airspace 4,500FT AMSL and below receives a Class G service (refer Figure 2).
 - CTAF procedures apply at Mackay.



**Figure 2: Mackay airspace when ATS provided by Brisbane Centre
(Tower and Approach not operating)
NOT TO BE USED FOR NAVIGATION**

6.2 Mackay AIP Changes

6.2.1 Amend AIP ERSa FAC M (MACKAY) sections as follows:

- Replace ATS AND AERODROME COMMUNICATIONS FACILITIES with Appendix 8.
- Amend LOCAL TRAFFIC REGULATIONS as detailed in Appendix 9.
- Amend FLIGHT PROCEDURES as detailed in Appendix 10.

7. CANCELLATION

- 7.1 This SUP will be cancelled when changes are incorporated into the IAIP, expected 1 December 2022.

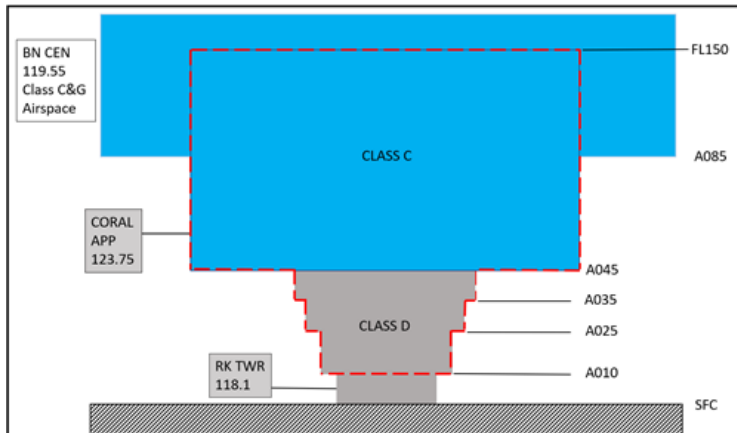
8. DISTRIBUTION

8.1 Airservices Australia website only.

Appendices

1. Airspace Services at Rockhampton – Tower and Approach operating
2. Airspace Services at Rockhampton – Tower and Approach not operating
3. Airspace Services at Mackay – Tower and Approach operating
4. Airspace Services at Mackay – Tower and Approach not operating
5. ERSA changes Rockhampton – ATS and Aerodrome Communications Facilities
6. ERSA changes Rockhampton – Local Traffic Regulations
7. ERSA changes Rockhampton – Flight Procedures
8. ERSA changes Mackay – ATS and Aerodrome Communications Facilities
9. ERSA changes Mackay – Local Traffic Regulations
10. ERSA changes Mackay – Flight Procedures
11. DAH Amendments – Section 7
12. DAH Amendments – Section 9
13. DAP Amendments – Mackay
14. DAP Amendments – Rockhampton
15. Charting Amendments

1. Airspace Services at Rockhampton – Tower and Approach operating



Note: Class E airspace adjacent to Class C steps above 8,500FT AMSL is not shown in the diagram above.

Operating Times

- Operations during tower hours. See *ERSA* for detailed times.

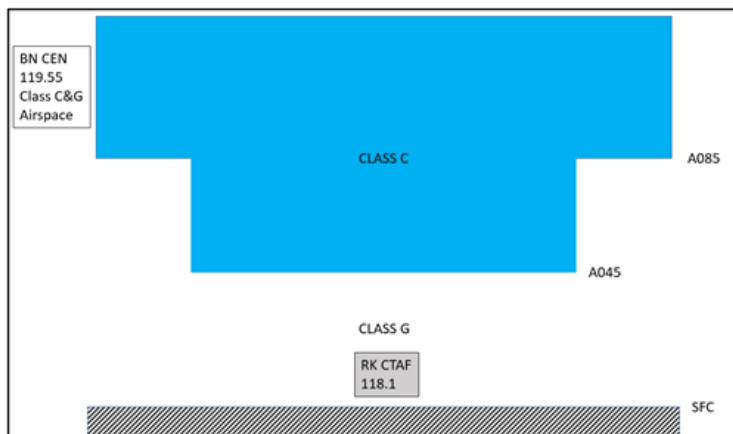
Description of Services Provided

- RK TWR provides Aerodrome control service SFC to 1,000FT AMSL.
- CORAL APP provides a surveillance Approach service in Class D and C airspace depicted by the red dashed line in diagram above from 1,000FT AMSL to FL150.
- BN CEN provides Area Surveillance service in Class G, E, C and A airspace from SFC to FL600.

Operating Considerations

- Standard tower, approach and enroute service.
- BN CEN provides an enroute Surveillance service in Class G, E, C and A airspace from SFC to FL600 outside the airspace being managed by CORAL APP (RK) and RK TWR.

2. Airspace services at Rockhampton – Tower and Approach not operating



Note: Class E airspace adjacent to Class C steps above 8,500FT AMSL is not shown in the diagram above.

Approximate Operating Times

- Operations outside of tower hours.

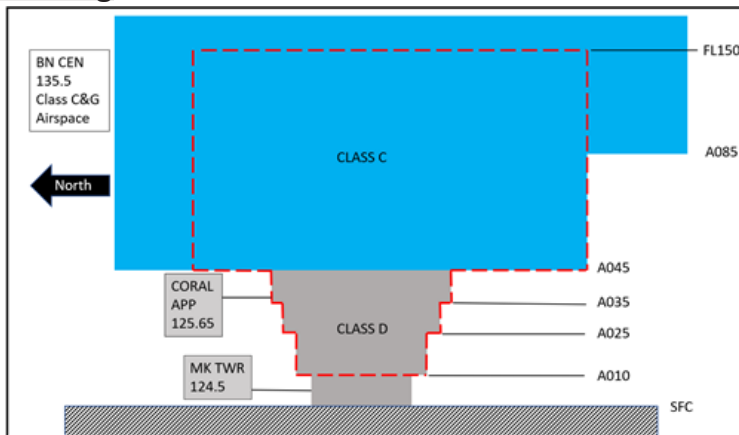
Description of Services Provided

- The aerodrome is uncontrolled, including the airspace from SFC to 4,500FT AMSL. All operations on the aerodrome surface (including takeoff) and in the airspace SFC to 4,500FT AMSL are at pilot discretion.
- BN CEN provides a surveillance area control service in Class G, E, C and A airspace from SFC to FL600 including SAR Alerting, Traffic Information, and other elements of FIS.

Operating Considerations

- CTAF procedures apply to all aircraft operating in the vicinity of the aerodrome.
- The aerodrome is uncontrolled, including the airspace from SFC to 4,500FT AMSL. All operations on the aerodrome surface (including takeoff) and in the airspace SFC to 4,500FT AMSL are at pilot discretion.
- BN CEN does not monitor the CTAF.

3. Airspace Services at Mackay – Tower and Approach operating



Note: Class E airspace adjacent to Class C steps above 8,500FT AMSL is not shown in the diagram above.

Approximate operating times

- Operations during tower hours. See ERSAs for detailed times.

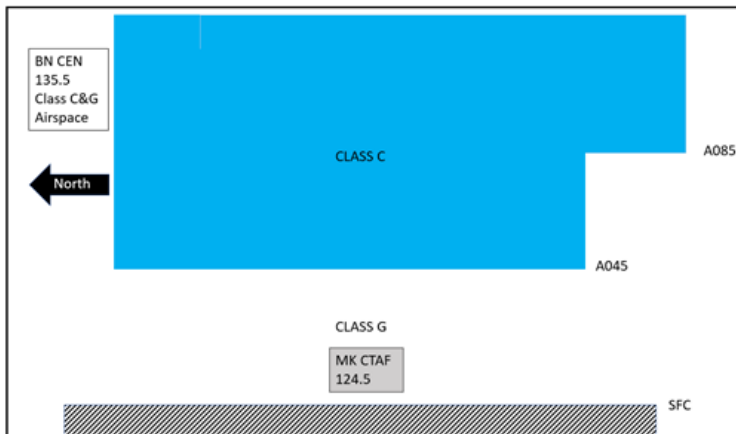
Description of Services Provided

- MK TWR provides Aerodrome control service SFC to 1,000FT AMSL.
- CORAL APP provides a surveillance Approach service in Class D and C airspace depicted by the red dashed line in diagram above from 1,000FT AMSL to FL150.
- BN CEN provides Area Surveillance service in Class G, E, C and A airspace from SFC to FL600.

Operating Considerations

- Standard tower, approach and enroute service.
- BN CEN provides an enroute Surveillance service in Class G, E, C and A airspace from SFC to FL600 outside the airspace being managed by CORAL APP (MK) and MK TWR.

4. Airspace Services at Mackay – Tower and Approach not operating



Note: Class E airspace adjacent to Class C steps above 8,500FT AMSL is not shown in the diagram above.

Approximate Operating Times

- Operations outside of tower hours.

Description of Services Provided

- The aerodrome is uncontrolled, including the airspace from SFC to 4,500FT AMSL. All operations on the aerodrome surface (including takeoff) and in the airspace SFC to 4,500FT AMSL are at pilot discretion.
- BN CEN provides a surveillance area control service in Class G, E, C and A airspace from SFC to FL600 including SAR Alerting, Traffic Information, and other elements of FIS.

Operating Considerations

- CTAF procedures apply to all aircraft operating in the vicinity of the aerodrome.
- The aerodrome is uncontrolled, including the airspace from SFC to 4,500FT AMSL. All operations on the aerodrome surface (including takeoff) and in the airspace SFC to 4,500FT AMSL are at pilot discretion.
- BN CEN does not monitor the CTAF.

5. ERSA changes Rockhampton – ATS and Aerodrome Communication Facilities

Amend AIP ERSR FAC R (ROCKHAMPTON) as follows:

Replace **ATS AND AERODROME COMMUNICATION FACILITIES** with the following:

ATS AND AERODROME COMMUNICATION FACILITIES

FIA	BRISBANE CENTRE	119.55
SMC	ROCKY GROUND	121.8
ATIS	ROCKY	116.9 128.5
APP	CORAL APPROACH (RK)	123.75
TWR	ROCKY TOWER	118.1

1. TWR HR:

MON-FRI: 2030-1035 UTC.

SAT: 2030-0930 UTC.

SUN: 2100-1035 UTC.

Note: TWR HR may change at short notice, check status of airspace with ATS or Rockhampton ATIS.

2. Phone RK TWR: 07 4931 5205[^]. BN CEN: 07 3866 3224[^].

3. Rocky TWR provides Class D TWR services within Rockhampton CTR, SFC to 1,000FT AMSL. CTC TWR for CLR.

4. During TWR HRS, CORAL APP provides ATS:

- a) WI the CTA steps Class D ABV 1,000FT AMSL to an upper level of 4,500FT AMSL.
- b) WI the Class C airspace contained within the boundaries of the Rockhampton CTA steps 36NM north and 36NM south of YBRK ABV 4,500FT AMSL to an upper level of FL150.

5. Outside TWR HR Brisbane Centre provides:

- a) ATS within Class C airspace ABV 4,500FT AMSL.
- b) Class G service at and below 4,500FT AMSL

Note: Outside TWR HR, CTC Brisbane Centre for TAX and on ground reports in this airspace.

6. ERSA changes Rockhampton – Local Traffic Regulations

Amend AIP ERSA FAC R (ROCKHAMPTON) as follows:

Replace the following entry in **LOCAL TRAFFIC REGULATIONS**

6. All SVY, practice IAL and NAVAID training within Class C and D airspace requires prior notice. Phone RK TWR DRG TWR HR for approval.

Delete the following entry in **LOCAL TRAFFIC REGULATIONS**

12. For TFC management, ACFT issued a ROCKHAMPTON TWO DEPARTURE(RADAR) should not enter the departure RWY until an assigned departure heading is obtained, or, an instruction to report lined up is issued.

7. ERSA changes Rockhampton – Flight Procedures

Amend AIP ERSa FAC R (ROCKHAMPTON) as follows:

Replace the following entry in **FLIGHT PROCEDURES**

1.1 ATC requirements

- c) Report on 123.75 at the OPS NORMAL time/s nominated by CORAL Approach.
- d) Report on 123.75 when ready to depart D706 for CLR.

Delete 3, 3.1 and 3.2

Renumber 3.3 as 3

3. Outside TWR HR, ACFT in the circuit are to operate as follows:

- a) RWY 15 and 22 – right hand CCTS;
- b) RWY 04 and 33 – left hand CCTS.

8. ERSA changes Mackay – ATS and Aerodrome Communication Facilities

Amend AIP ERSAC FAC M (MACKAY) as follows:

Replace **ATS AND AERODROME COMMUNICATION FACILITIES** with the following:

ATS AND AERODROME COMMUNICATION FACILITIES

FIA	BRISBANE CENTRE	135.5
TWR	MACKAY TOWER	124.5
APP	CORAL APPROACH (MK)	125.65
SMC	MACKAY GROUND	121.7
ATIS	MACKAY	112.7 128.0

1. TWR and APP HR:

MON-FRI: 2020-1020 UTC.

SAT-SUN: 2020-0930 UTC.

Note: TWR HR may change at short notice, check status of airspace with ATS or Mackay ATIS.

2. Phone MK TWR: 07 4951 8431[^] or 07 4951 8491[^].
BN CEN: 07 3866 3224[^].

3. Mackay TWR provides Class D TWR services within Mackay CTR, SFC to 1,000FT AMSL. CTC TWR for CLR.

4. During TWR HRS, CORAL APP provides ATS:

- a) WI the CTA steps Class D ABV 1,000FT AMSL to an upper level of 4,500FT AMSL.
- b) WI the Class C airspace contained within the boundaries of the Mackay and SWAMPY CTA steps 22NM north and 36NM south of YBMK ABV 4,500FT AMSL to an upper level of FL150.

5. Outside TWR HR Brisbane Centre provides:

- a) ATS within Class C airspace ABV 4,500FT AMSL.
- b) Class G service at and below 4,500FT AMSL

Note: Outside TWR HR, CTC Brisbane Centre for TAX and on ground reports in this airspace

9. ERSA changes Mackay – Local Traffic Regulations

Amend AIP ERSA FAC M (Mackay) as follows:

Replace the following entry in **LOCAL TRAFFIC REGULATIONS**

7. TRAINING FLIGHTS

- b) All SVY, practice IAL and NAVAID training within Class C and D airspace requires prior notice. Phone MK TWR DRG TWR HR for approval.

Delete the following entry in **LOCAL TRAFFIC REGULATIONS**

- 10. For TFC management, ACFT issued a MACKAY ONE DEPARTURE (RADAR) should not enter the departure RWY until an assigned departure heading is obtained, or an instruction to report lined up is issued.

10. ERSA changes Mackay – Flight Procedures

Amend AIP ERSA FAC M (MACKAY) as follows:

Delete entire **FLIGHT PROCEDURES** section

11. DAH Amendments – Section 7

Delete the following entries in the DAH

YBBB/ROCKHAMPTON CTA E1

YBBB/ROCKHAMPTON CTA E2

YBBB/ROCKHAMPTON CTA E3

YBBB/ROCKHAMPTON CTA E4

YBBB/MACKAY CTA E1

YBBB/MACKAY CTA E2

YBBB/MACKAY CTA E3

YBBB/MACKAY CTA E4

12. DAH Amendments – Section 9

INSERT

YBBB/CORAL APPROACH (MACKAY)

LATERAL LIMITS: 210904S 1490458E - 210513S 1484821E

then along the clockwise arc of a circle radius 22.00NM centre

211023S 1491115E (MK/DME) - 204818S 1491221E

205920S 1491147E

then along the clockwise arc of a circle radius 11.00NM centre

211023S 1491115E (MK/DME) - 211548S 1492129E

212749S 1494500E

then along the clockwise arc of a circle radius 36.00NM centre

211023S 1491115E (MK/DME) - 214628S 1491000E

211623S 1491100E

then along the clockwise arc of a circle radius 6.00NM centre

211023S 1491115E (MK/DME) - 210904S 1490458E

VERTICAL LIMITS: BCTA - FL150

HOURS OF ACTIVITY: As specified by AIP

CONTROLLING AUTHORITY: Airservices Australia

YBBB/CORAL APPROACH (ROCKHAMPTON)

LATERAL LIMITS: 231055S 1495127E

then along the clockwise arc of a circle radius 36.00NM centre

232258S 1502818E (RK/DME) - 224720S 1503444E

230708S 1503109E

then along the clockwise arc of a circle radius 16.00NM centre

232258S 1502818E (RK/DME) - 232959S 1504357E

233835S 1510338E

then along the clockwise arc of a circle radius 36.00NM centre

232258S 1502818E (RK/DME) - 235855S 1502427E

233857S 1502634E

then along the clockwise arc of a circle radius 16.00NM centre

232258S 1502818E (RK/DME) - 231741S 1501153E

231055S 1495127E

VERTICAL LIMITS: BCTA - FL150

HOURS OF ACTIVITY: As specified by AIP

CONTROLLING AUTHORITY: Airservices Australia

13. DAP Amendments Mackay

Delete

Text in procedure box for SID MACKAY TWO DEPARTURE (RADAR)

OUTSIDE TWR HOURS, CONTACT MACKAY APPROACH ON GROUND FOR CLEARANCE INTO CLASS E AIRSPACE.

For TFC management, ACFT SHOULD NOT enter the DEP RWY until an assigned DEP heading obtained OR an instruction to REPORT LINED UP is issued.

Amend

Frequency header

ATIS 112.7 128.0	SMC 121.7	TWR 124.5	CORAL APP (MK) 125.65	CTAF+AFRU (AH) 124.5	AFRU+PAL(AH) 124.5	FIA (AH) BN CEN 135.5
------------------------	--------------	--------------	-----------------------------	----------------------------	-----------------------	-----------------------------

On the following YBMK chart:

- Aerodrome Chart Page 1
- Aerodrome Chart Page 2
- SID MACKAY TWO DEPARTURE (RADAR)
- SID CLIFT TWO DEPARTURE (RNAV)
- SID POONA TWO DEPARTURE (RNAV)
- STAR DAGSI ONE ARRIVAL (RNAV)
- STAR WELKE ONE ARRIVAL (RNAV)
- DME or GNSS ARRIVAL PROCEDURES Page 1
- DME or GNSS ARRIVAL PROCEDURES Page 2
- VOR RWY 14
- VOR RWY 32
- NDB-A or VOR-A
- RNP RWY 14
- RNP RWY 32

14. DAP Amendments Rockhampton

Delete

Text in procedure box for SID ROCKHAMPTON THREE DEPARTURE (RADAR)
'OUTSIDE TWR HOURS, CONTACT ROCKHAMPTON APPROACH ON GROUND
FOR CLEARANCE INTO CLASS E AIRSPACE.

For TFC management, ACFT SHOULD NOT enter the DEP RWY until an assigned
DEP heading obtained OR an instruction to REPORT LINED UP is issued.'

Amend

Frequency header

ATIS 116.9 128.5	SMC 121.8	TWR 118.1	CORAL APP (RK) 123.75	CTAF+AFRU (AH) 118.1	AFRU+PAL(AH) 118.1	FIA (AH) BN CEN 119.55
------------------------	--------------	--------------	-----------------------------	----------------------------	-----------------------	------------------------------

On the following YBRK charts:

- Aerodrome Chart Page 1
- Aerodrome Chart Page 2
- SID ROCKHAMPTON THREE DEPARTURE (RADAR)
- SID BUDGI TWO DEPARTURE (RNAV)
- SID TARES THREE DEPARTURE (RNAV)
- STAR ABVAS ONE ARRIVAL (RNAV)
- STAR DADBO ONE ARRIVAL (RNAV)
- DME or GNSS ARRIVAL PROCEDURES Page 1
- DME or GNSS ARRIVAL PROCEDURES Page 2
- VOR RWY 15
- VOR RWY 33
- NDB-A or VOR-A
- RNP RWY 15
- RNP RWY 33

15. Charting Amendments

Amend

Enroute Chart (ERC) L4

Replace the text box below Mackay airfield information:

FOR OPERATION OF MK AIRSPACE SEE ERSA MK APP 125.65 OUTSIDE
TWR HRS'

with

'REFER TO ERSA AND ATIS FOR MACKAY AIRSPACE INFORMATION

Replace the text box right of Rockhampton airfield information

FOR OPERATION OF RK AIRSPACE SEE ERSA RK APP 123.75 OUTSIDE
TWR HRS

with

REFER TO ERSA AND ATIS FOR ROCKHAMPTON AIRSPACE
INFORMATION

Terminal Area Chart TAC-2 (Mackay)

Replace the text box left of Mackay airfield information

FOR OPERATION OF MK AIRSPACE SEE ERSA MK APP 125.65 OUTSIDE
TWR HRS

with

REFER TO ERSA AND ATIS FOR MACKAY AIRSPACE INFORMATION

Terminal Area Chart TAC-2 (Rockhampton)

Replace the text box right of Rockhampton airfield information

FOR OPERATION OF RK AIRSPACE SEE ERSA RK APP 123.75 OUTSIDE
TWR HRS

with

REFER TO ERSA AND ATIS FOR ROCKHAMPTON AIRSPACE
INFORMATION

Visual Navigation Chart (VNC) Townsville

Replace the text box right of Mackay airfield information

MACKAY TWR OPERATES CLASS D AIRSPACE 4500FT AND BLW DURING TWR HOURS. OUTSIDE TWR HRS CLASS D AIRSPACE SFC TO 700FT AGL BECOMES CLASS G AND CLASS D AIRSPACE ABV 700FT AGL BECOMES CLASS E. MK APP 125.65

with

REFER TO ERSA AND ATIS FOR MACKAY AIRSPACE INFORMATION

Visual Navigation Chart (VNC) Rockhampton

Replace the text box right of Mackay airfield information

MACKAY TWR OPERATES CLASS D AIRSPACE 4500FT AND BLW DURING TWR HOURS. OUTSIDE TWR HRS CLASS D AIRSPACE SFC TO 700FT AGL BECOMES CLASS G AND CLASS D AIRSPACE ABV 700FT AGL BECOMES CLASS E. MK APP 125.65

with

REFER TO ERSA AND ATIS FOR MACKAY AIRSPACE INFORMATION

Replace the two text boxes left and right of Rockhampton airfield information
ROCKHAMPTON TWR OPERATES CLASS D AIRSPACE 4500FT AND BLW DURING TWR HOURS. OUTSIDE TWR HRS CLASS D AIRSPACE SFC TO 700FT AGL BECOMES CLASS G AND CLASS D AIRSPACE ABV 700FT AGL BECOMES CLASS E. RK APP 123.75

with

one text box to right REFER TO ERSA AND ATIS FOR ROCKHAMPTON AIRSPACE INFORMATION

Visual Terminal Chart (VTC) Mackay

Replace the two text boxes above and right of Mackay airfield information
MACKAY TWR OPERATES CLASS D AIRSPACE 4500FT AND BLW DURING TWR HOURS. OUTSIDE TWR HRS CLASS D AIRSPACE SFC TO 700FT AGL BECOMES CLASS G AND CLASS D AIRSPACE ABV 700FT AGL BECOMES CLASS E. MK APP 125.65

with

one text box to right REFER TO ERSA AND ATIS FOR MACKAY AIRSPACE INFORMATION

Visual Terminal Chart (VTC) Rockhampton

Replace the two text boxes above and below Rockhampton airfield information

ROCKHAMPTON TWR OPERATES CLASS D AIRSPACE 4500FT AND BLW DURING TWR HOURS. OUTSIDE TWR HRS CLASS D AIRSPACE SFC TO 700FT AGL BECOMES CLASS G AND CLASS D AIRSPACE ABV 700FT AGL BECOMES CLASS E. RK APP 123.75

with

one text box below REFER TO ERSA AND ATIS FOR ROCKHAMPTON AIRSPACE INFORMATION

Delete:

Class E airspace levels and airspace boundaries as per DAH changes in Appendix 11 for the following charts:

- Enroute Chart (ERC) L4
- Terminal Area Chart TAC-2 (Mackay)
- Terminal Area Chart TAC-2 (Rockhampton)
- Visual Navigation Chart (VNC) Townsville
- Visual Navigation Chart (VNC) Rockhampton
- Visual Terminal Chart (VTC) Mackay
- Visual Terminal Chart (VTC) Rockhampton