

**AIP SUPPLEMENT
(SUP)****AIRAC****H59/22****Effective: 202208101600 UTC**AERONAUTICAL INFORMATION SERVICE,
AIRSERVICES AUSTRALIA, GPO BOX 367,
CANBERRA ACT 2601For **DISTRIBUTION** queries, contact:
Email: aim_editorial@airservicesaustralia.comFor **CONTENT** queries regarding this SUP, contact:Email: fpdo.au@idscorporation.com**MOUNT HOLLAND AIRPORT (YMHL)
NEW DAP WEST PROCEDURES****1. INTRODUCTION**

1.1 This AIP SUP introduces new DAP procedures at Mount Holland (YMHL).

2. IMPLEMENTATION

2.1 The procedures in the appendices become effective 202208101600 UTC.

3. WAYPOINTS

3.1 YMHL RNAV (GNSS) RWY 08 waypoints are as follows:

HO2WG	320258.44S	1193053.46E	IAF LEFT
HO2WE	320757.42S	1192731.55E	IAF CENTRE
HO2WF	320703.54S	1193915.24E	FAF
HO2WH	320619.71S	1194837.29E	MAHF
HO2WI	320730.61S	1193323.42E	IF
RW08	320636.25S	1194506.26E	MAPt

3.2 YMHL RNAV (GNSS) RWY 26 waypoints are as follows:

HO2EA	320044.80S	1195922.30E	IAF RIGHT
HO2EB	320507.47S	1200344.69E	IAF CENTRE
HO2EC	321007.31S	1200024.49E	IAF LEFT
HO2EF	320603.61S	1195201.48E	FAF
HO2EH	320647.97S	1194235.96E	MAHF
HO2EI	320535.68S	1195753.12E	IF
RW26	320631.50S	1194607.00E	MAPt

4. CANCELLATION

4.1 This SUP will be cancelled when the procedures are incorporated into AIP DAP. This is expected to be in DAP amendment 173, effective 1 December 2022.

5. DISTRIBUTION

5.1 Airservices Australia website only.

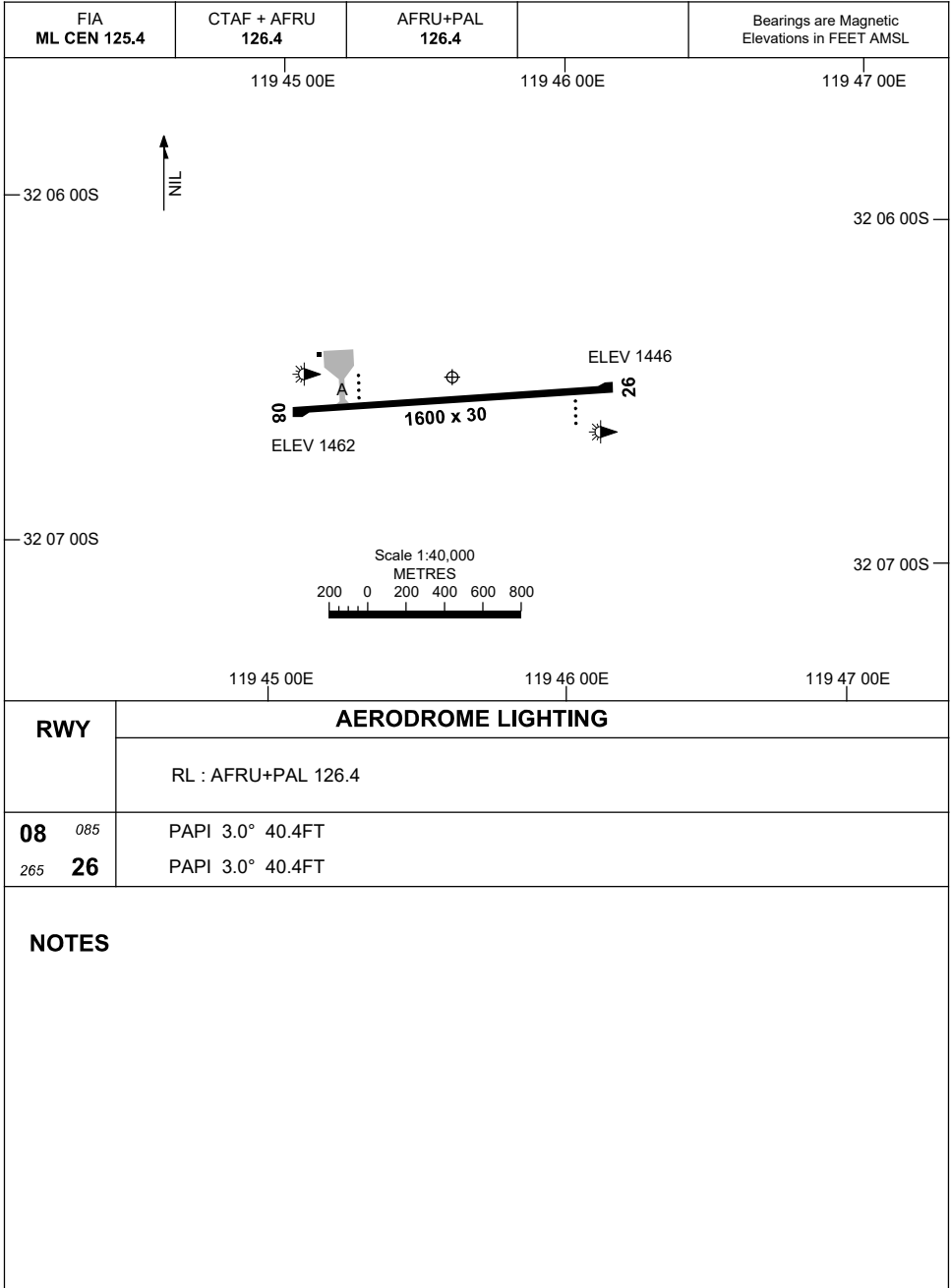
Appendices

1. Aerodrome Chart
2. RNAV (GNSS) RWY 08
3. RNAV (GNSS) RWY 26

**APPENDIX 1 TO
AIP SUP H59/22**

AD ELEV 1462
32 06 30S 119 45 36E

**AERODROME CHART
MOUNT HOLLAND, WA (YMHL)**



Changes: NEW CHART.

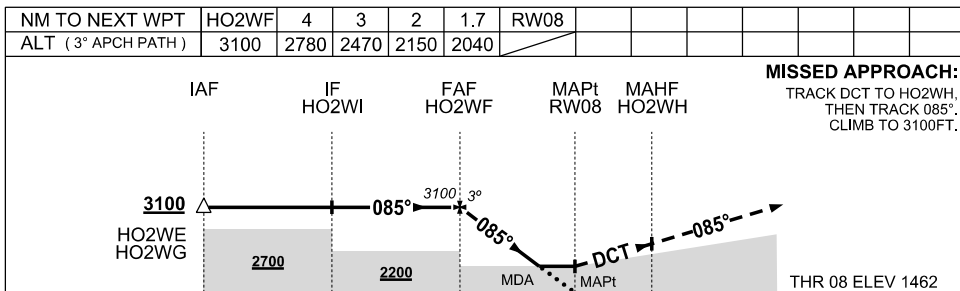
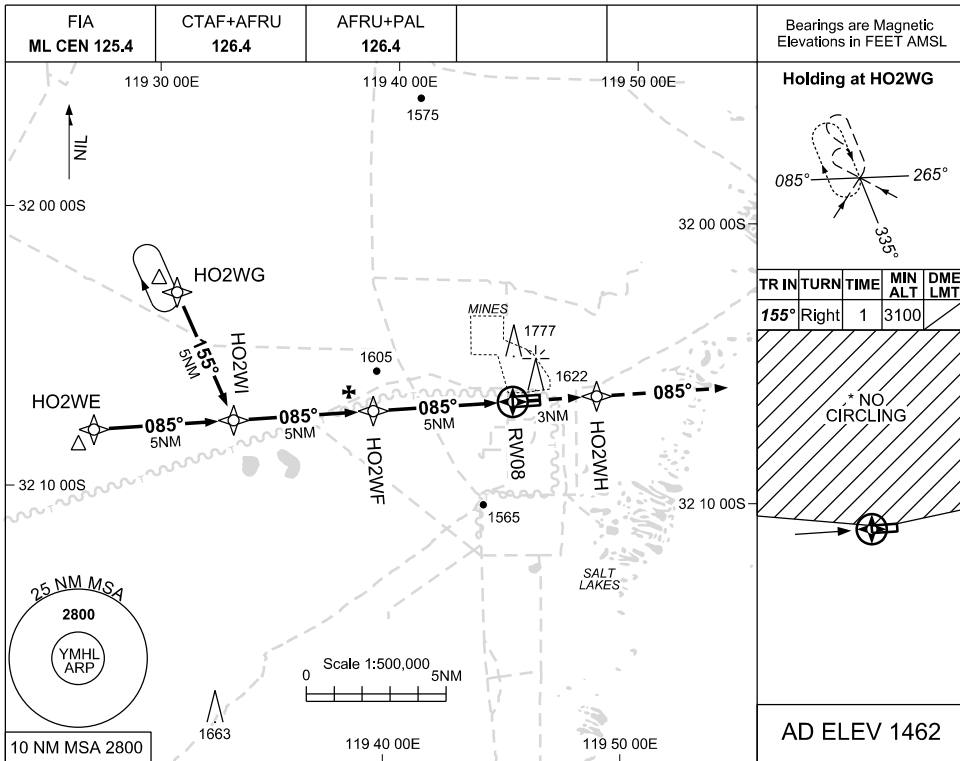
MHLAD01-SUP



**APPENDIX 2 TO
SUP H59/22**

USE QNH

**RNAV (GNSS) RWY 08
MOUNT HOLLAND, WA (YMHL)**



CATEGORY	A	B	C	D	
LNAV	2040 (578-3.3)				NOT AUTHORISED
* CIRCLING	2080 (618-2.4)		2180(718-4.0)		
ALTERNATE	(1118-4.4)		(1218-6.0)		

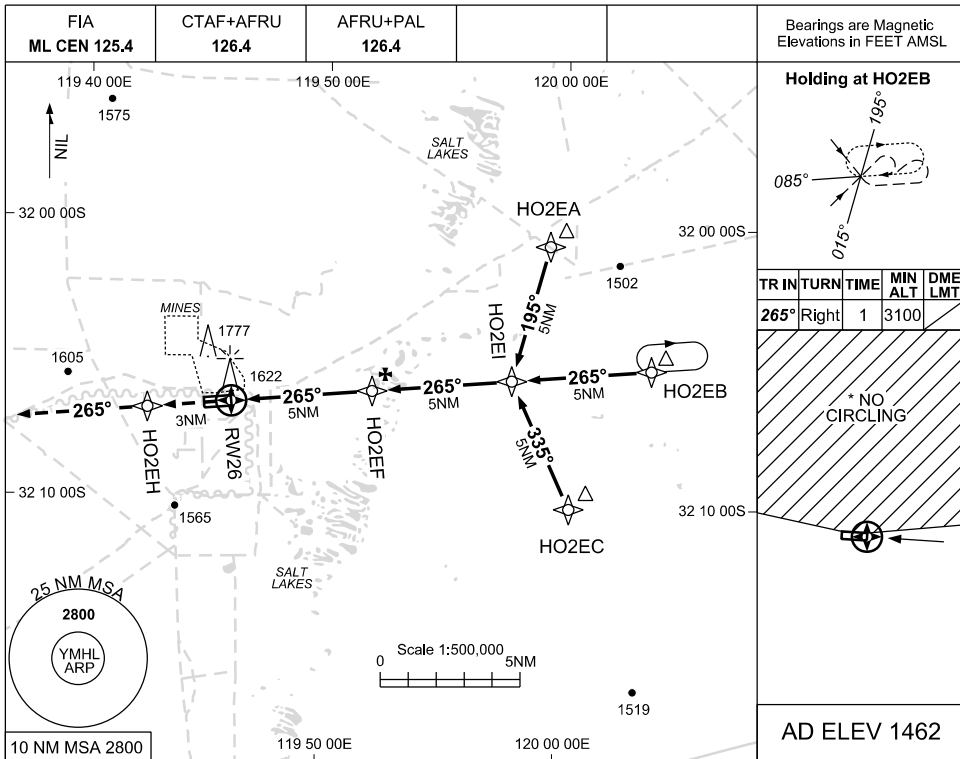
Changes: NEW PROCEDURE

MHLGN01-SUP

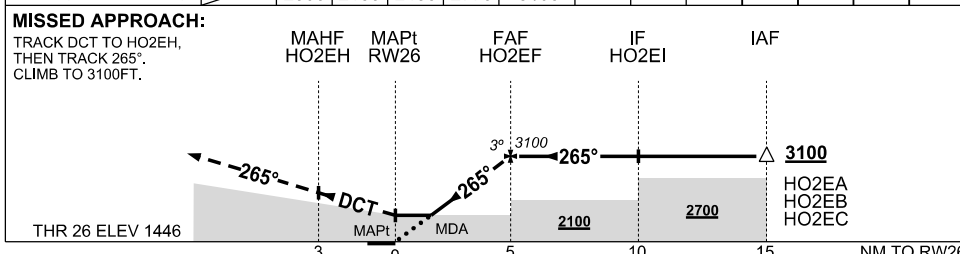
**APPENDIX 3 TO
SUP H59/22**

USE QNH

**RNAV (GNSS) RWY 26
MOUNT HOLLAND, WA (YMHL)**



NM TO NEXT WPT	RW26	1.6	2	3	4	HO2EF				
ALT (3° APCH PATH)		2000	2130	2450	2770	3100				



- NOTES**
- MAX IAS: INITIAL: 210KTS
 - * NO CIRCLING N OF RWY 08/26
 - YFTA PROC ADJ TO S
 - ABANDONED RWY S OF RWY 08/26
 - CAUTION:** BLASTING 1NM N OF RWY 08/26 REFER ERS A

CATEGORY	A	B	C	D
LNAV	2000 (554-3.1)			NOT AUTHORISED
* CIRCLING	2080 (618-2.4)		2180(718-4.0)	
ALTERNATE	(1118-4.4)		(1218-6.0)	

Changes: NEW PROCEDURE

MHLGN02-SUP