

**AIP SUPPLEMENT
(SUP)****AIRAC****H58/22****Effective: 202208101600 UTC**AERONAUTICAL INFORMATION SERVICE,
AIRSERVICES AUSTRALIA, GPO BOX 367,
CANBERRA ACT 2601For **DISTRIBUTION** queries, contact:
Email: aim_editorial@airservicesaustralia.comFor **CONTENT** queries regarding this SUP, contact:Email: fpdo.au@idscorporation.com**ABRA MINE AIRPORT (YABR)
NEW DAP WEST PROCEDURES****1. INTRODUCTION**

1.1 This AIP SUP introduces new DAP procedures at Abra Mine (YABR).

2. IMPLEMENTATION

2.1 The procedures in the appendices become effective 202208101600 UTC.

3. WAYPOINTS

3.1 YABR RNAV (GNSS) RWY 11 waypoints are as follows:

AE2WD	243846.38S	1182328.79E	IAF RIGHT
AE2WE	243319.68S	1182126.71E	IAF CENTRE
AE2WG	242943.01S	1182620.51E	IAF LEFT
AE2WF	243606.68S	1183159.09E	FAF
AE2WH	243810.76S	1183951.07E	MAHF
AE2WI	243443.27S	1182642.84E	IF
RW11	243720.90S	1183641.20E	MAPt

3.2 YABR RNAV (GNSS) RWY 29 waypoints are as follows:

AE2EA	243610.90S	1185057.02E	IAF RIGHT
AE2EB	244137.20S	1185300.43E	IAF CENTRE
AE2EC	244514.73S	1184806.93E	IAF LEFT
AE2EF	243851.68S	1184227.12E	FAF
AE2EH	243647.16S	1183432.87E	MAHF
AE2EI	244014.53S	1184743.72E	IF
RW29	243737.06S	1183742.71E	MAPt

4. CANCELLATION

4.1 This SUP will be cancelled when the procedures are incorporated into AIP DAP. This is expected to be in DAP amendment 173, effective 1 December 2022.

5. DISTRIBUTION

5.1 Airservices Australia website only.

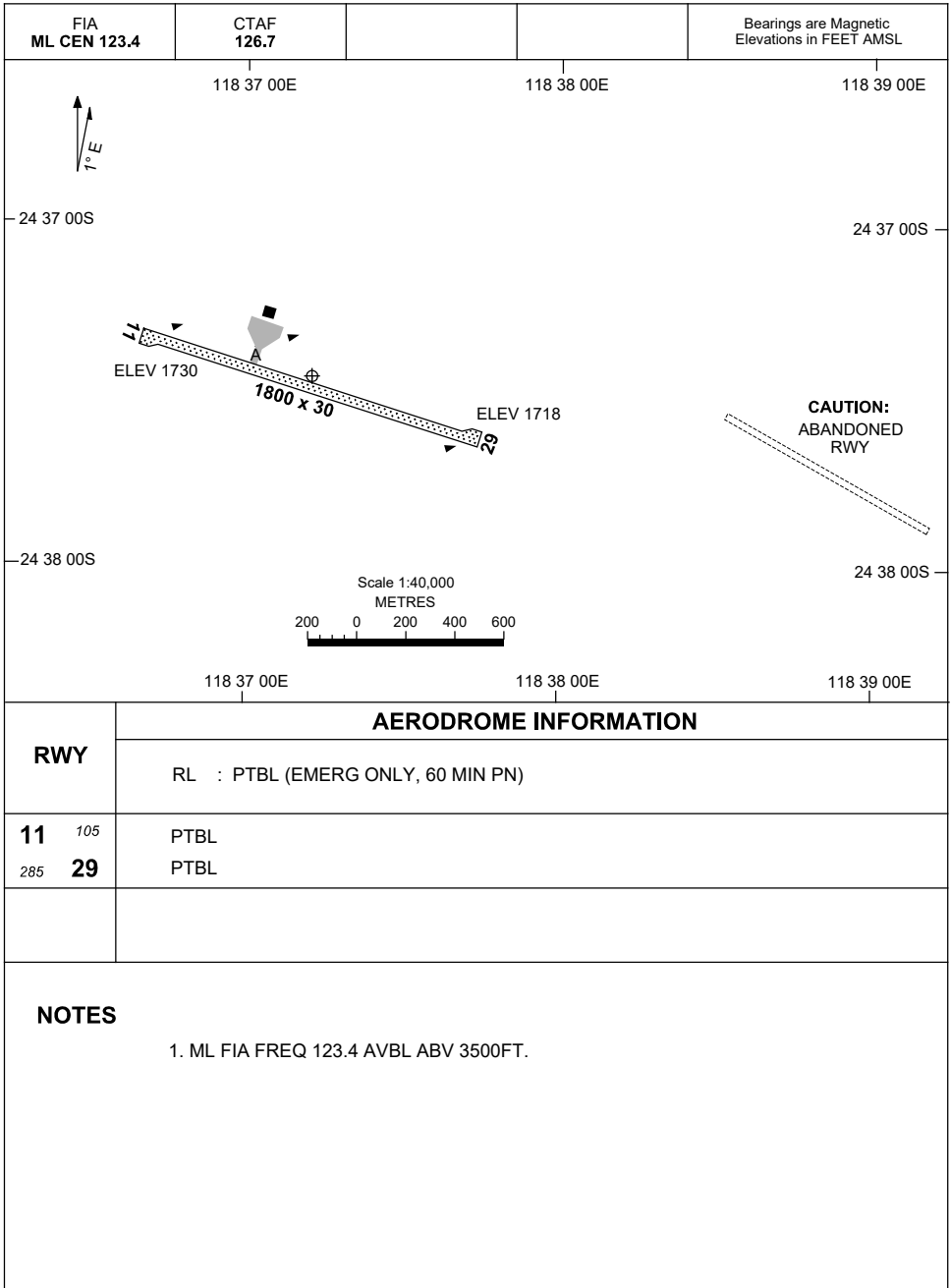
Appendices

1. Aerodrome Chart
2. RNAV (GNSS) RWY 11
3. RNAV (GNSS) RWY 29

**APPENDIX 1
TO SUP H58/22**

AD ELEV 1730
24 37 27S 118 37 13E

**AERODROME CHART
ABRA MINE, WA (YABR)**



	AERODROME INFORMATION
RWY	RL : PTBL (EMERG ONLY, 60 MIN PN)
11 <small>105</small>	PTBL
<small>285</small> 29	PTBL

NOTES

1. ML FIA FREQ 123.4 AVBL ABV 3500FT.

Changes: NEW CHART.

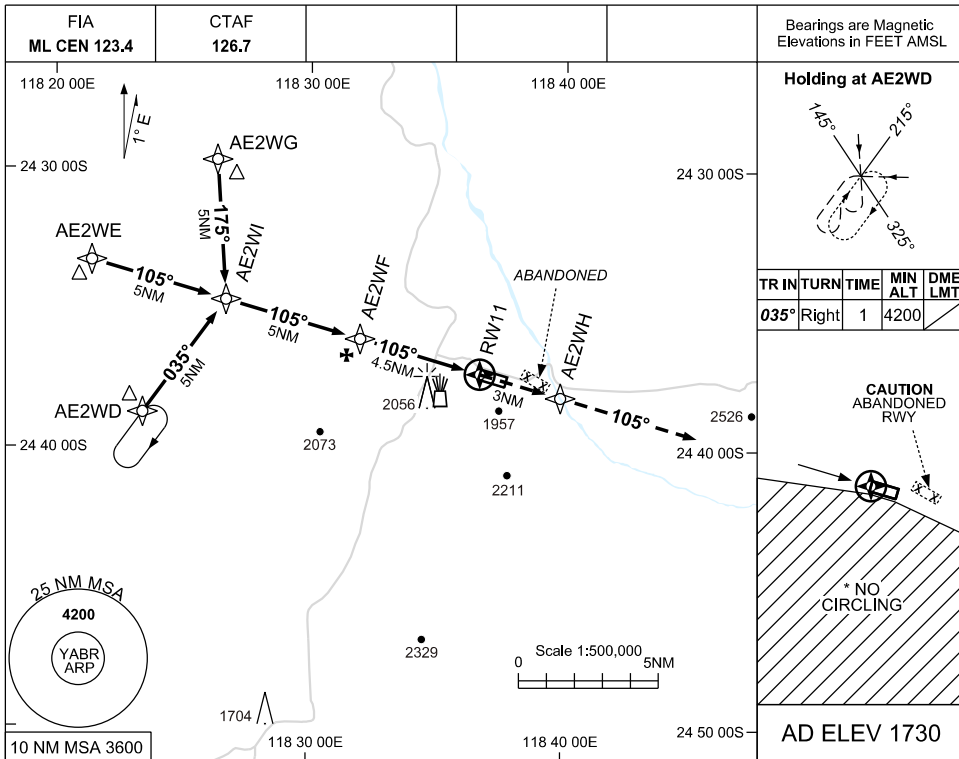
ABRAD01-SUP



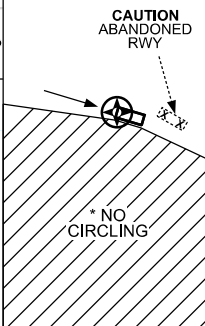
**APPENDIX 2 TO
SUP H58/22**

USE QNH

**RNAV (GNSS) RWY 11
ABRA MINE, WA (YABR)**

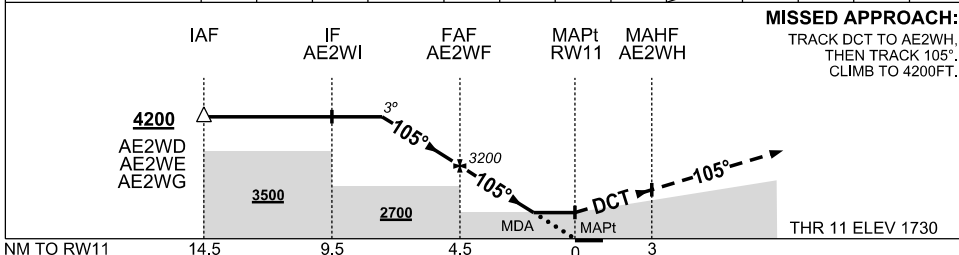


TR IN	TURN	TIME	MIN ALT	DME LMT
035°	Right	1	4200	



AD ELEV 1730

NM TO NEXT WPT	3.1	2	1	AE2WF	4	3	2	1.6	RW11
ALT (3° APCH PATH)	4200	3840	3520	3200	3050	2740	2420	2280	



NOTES

1. MAX IAS: INITIAL : 210KT
- *2. NO CIRCLING S OF RWY 11/29
3. CAUTION: PLUME RISE 2NM SW
4. CAUTION: ABANDONED RWY 1NM E

CATEGORY	A	B	C	D
LNAV	2280 (550-3.1)			NOT AUTHORISED
* CIRCLING	2390 (660-2.4)		2490(760-4.0)	
ALTERNATE	(1160-4.4)		(1260-6.0)	

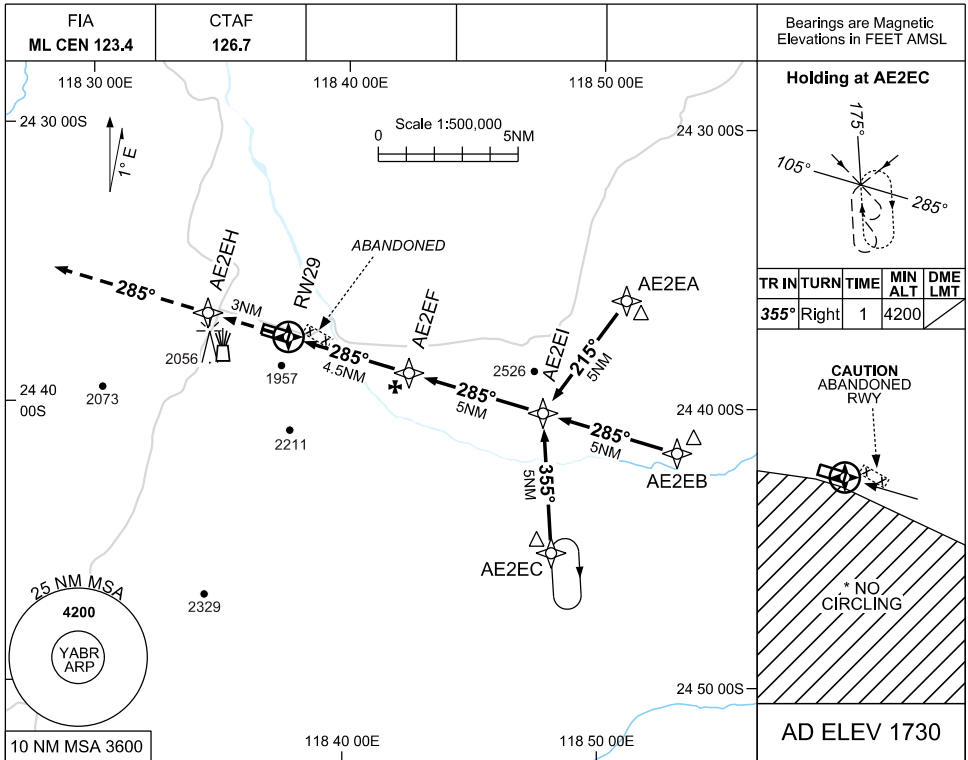
Changes: NEW PROCEDURE

ABRGN01-SUP

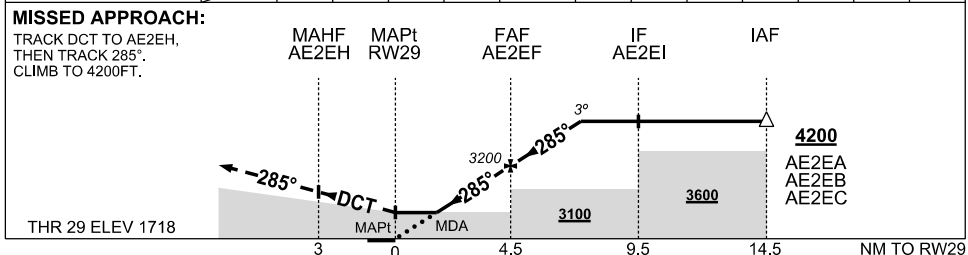
**APPENDIX 3 TO
SUP H58/22**

USE QNH

**RNAV (GNSS) RWY 29
ABRA MINE, WA (YABR)**



NM TO NEXT WPT	RWY29	1.6	2	3	4	AE2EF	1	2	3.1				
ALT (3° APCH PATH)		2270	2410	2730	3050	3200	3520	3840	4200				



NOTES

1. MAX IAS: INITIAL : 210KT
- *2. NO CIRCLING S OF RWY 11/29
3. CAUTION: PLUME RISE 2NM SW
4. CAUTION: ABANDONED RWY 1NM E

CATEGORY	A	B	C	D
LNAV	2270 (552-3.1)			NOT AUTHORISED
* CIRCLING	2390 (660-2.4)		2490(760-4.0)	
ALTERNATE	(1160-4.4)		(1260-6.0)	

Changes: NEW PROCEDURE

ABRGN02-SUP