

**AIP SUPPLEMENT  
(SUP)**

**AIRAC**

**H57/22**

**Effective: 202208101600 UTC**

AERONAUTICAL INFORMATION SERVICE,  
AIRSERVICES AUSTRALIA, GPO BOX 367,  
CANBERRA ACT 2601

For **DISTRIBUTION** queries, contact:  
Email: [aim\\_editorial@airservicesaustralia.com](mailto:aim_editorial@airservicesaustralia.com)

For **CONTENT** queries regarding this SUP, contact:  
Email: [c.dagon@idscorporation.com](mailto:c.dagon@idscorporation.com)

**WINDARLING AIRPORT (YWDG)  
NEW DAP WEST PROCEDURES**

**1. INTRODUCTION**

1.1 This AIP SUP introduces new DAP procedures at Windarling (YWDG).

**2. IMPLEMENTATION**

2.1 The procedures in the appendices become effective 202208101600 UTC.

**3. WAYPOINTS**

3.1 YWDG RNAV-W (GNSS) are as follows:

<b>ZW2WD</b>	300341.04S	1190817.71E	IAF Right
<b>ZW2WE</b>	295820.21S	1190552.02E	IAF Centre
<b>ZW2WG</b>	295431.28S	1191048.35E	IAF Left
<b>ZW2WI</b>	295930.02S	1191128.02E	IF
<b>ZW2WF</b>	300039.83S	1191704.09E	FAF
<b>ZW2WH</b>	300231.32S	1192601.99E	MAHF
<b>RW10</b>	300149.63S	1192240.26E	MAPt

3.2 YWDG RNAV (GNSS) RWY 28 waypoints are as follows:

<b>ZW2EA</b>	300011.63S	1193810.17E	IAF Right
<b>ZW2EB</b>	300532.30S	1194036.38E	IAF Centre
<b>ZW2EC</b>	300921.45S	1193539.75E	IAF Left
<b>ZW2EI</b>	300422.90S	1193459.70E	IF
<b>ZW2EF</b>	300313.15S	1192923.64E	FAF
<b>ZW2EH</b>	300121.88S	1192025.62E	MAHF
<b>RW28</b>	300203.54S	1192347.39E	MAPt

#### 4. CANCELLATION

4.1 This SUP will be cancelled when the procedures are incorporated into AIP DAP. This is expected to be in DAP amendment 173, effective 1 December 2022.

#### 5. DISTRIBUTION

5.1 Airservices Australia website only.

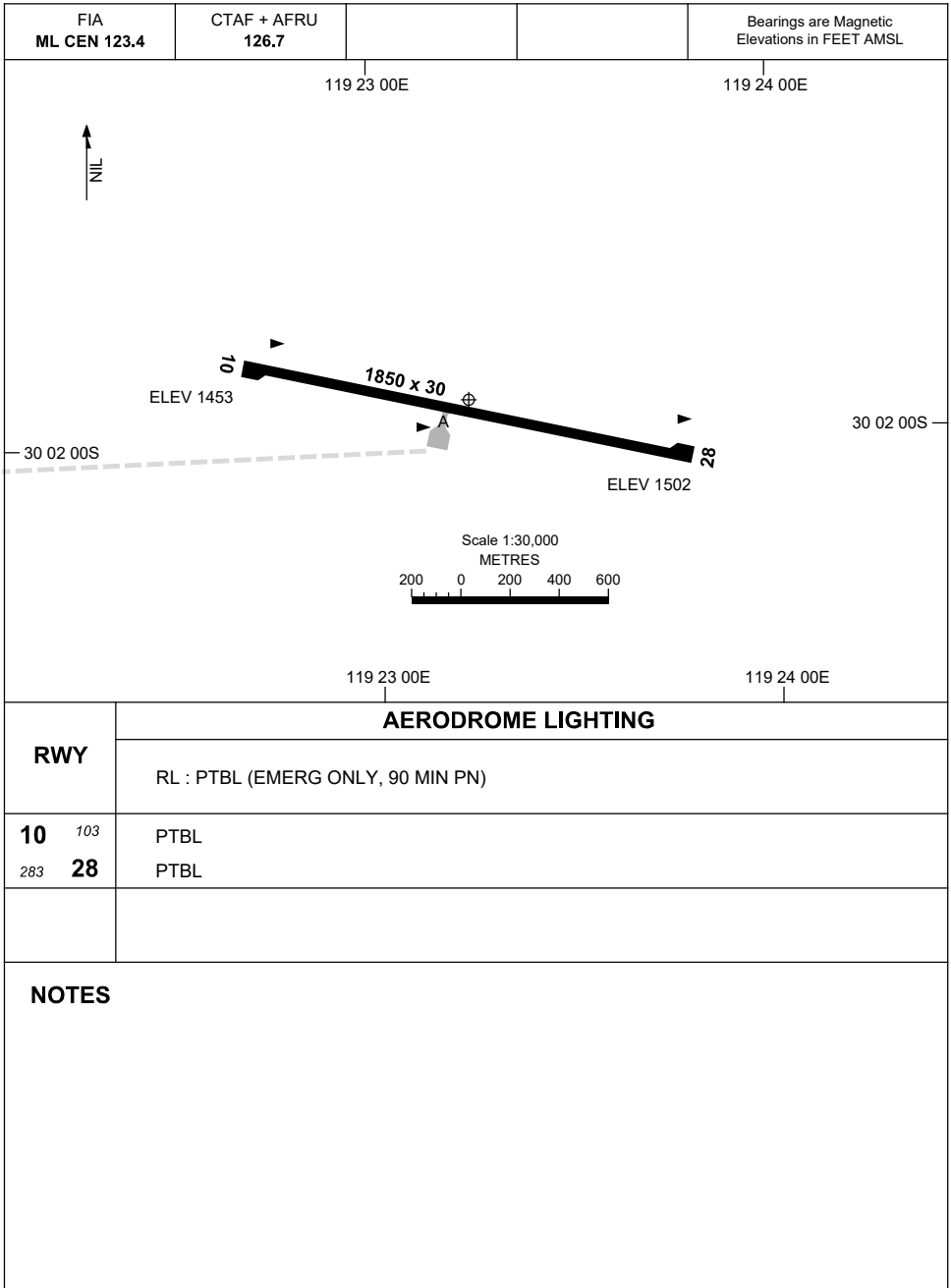
#### Appendices

1. Aerodrome Chart
2. RNAV-W (GNSS)
3. RNAV (GNSS) RWY 28

**APPENDIX 1  
TO AIP SUP H57/22**

AD ELEV 1502  
30 01 55S 119 23 14E

**AERODROME CHART  
WINDARLING, WA (YWDG)**



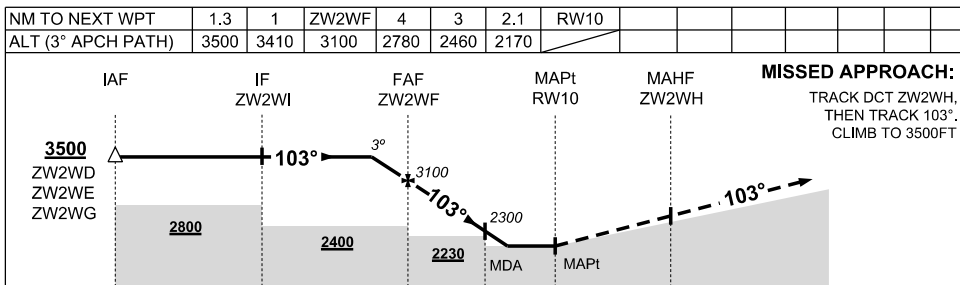
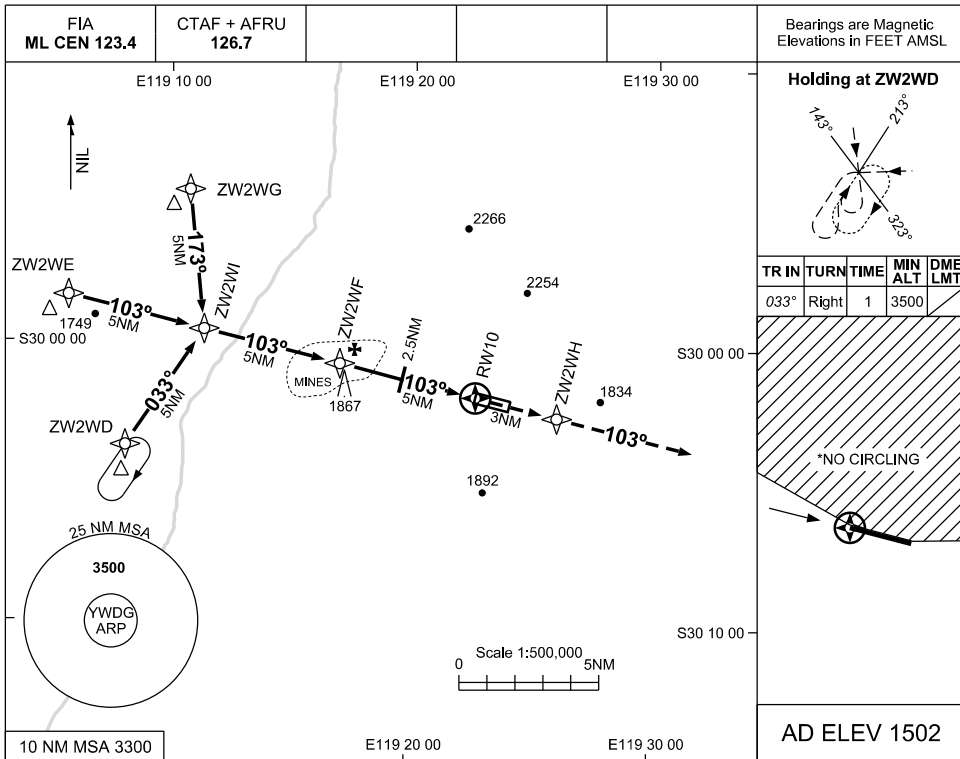
Changes: NEW CHART.

WDGAD01-SUP

**APPENDIX 2 TO  
SUP H57/22**

**USE QNH**

**RNAV-W (GNS)  
WINDARLING, WA (YWDG)**



NM TO RWY10: 15, 10, 5, 2.5, 0, 3

**NOTES**

CATEGORY	A	B	C	D
CIRCLING*	2170 (668-2.4)		2400(898-4.0)	
ALTERNATE	(1168-4.4)		(1398-6.0)	

NOT AUTHORISED

- MAX IAS:  
INITIAL : 210KT
- NO CIRCLING  
N OF RWY 10/28
- CAUTION:** CHECK  
BLASTING TIMES  
WITH AD OPR

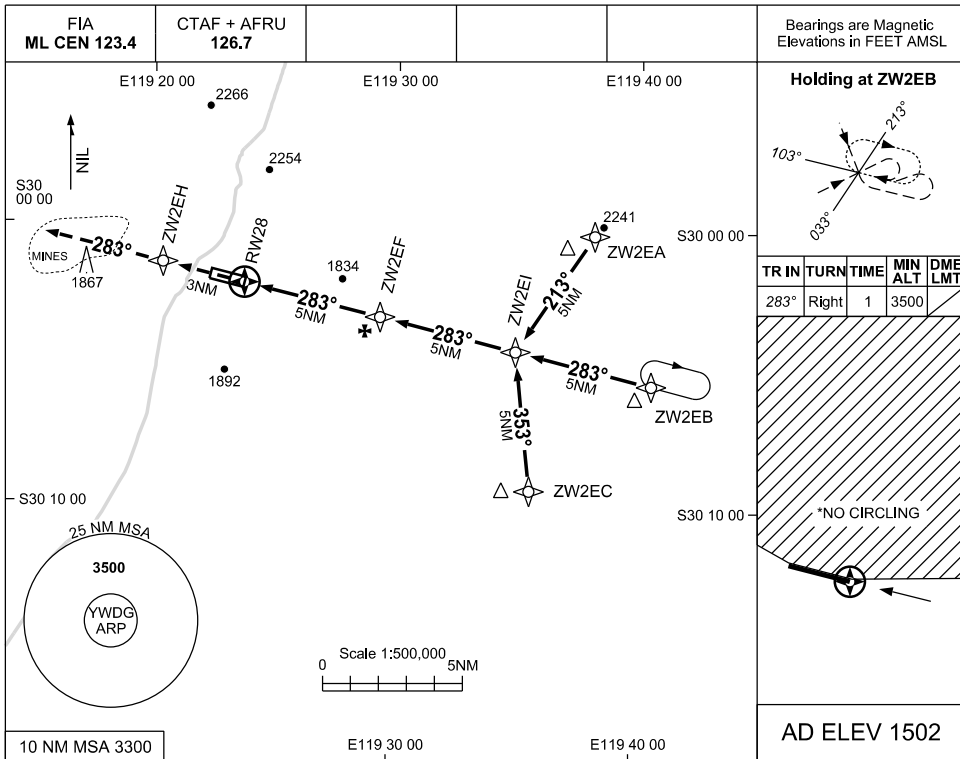
Changes: NEW PROCEDURE

WDGGN01-SUP

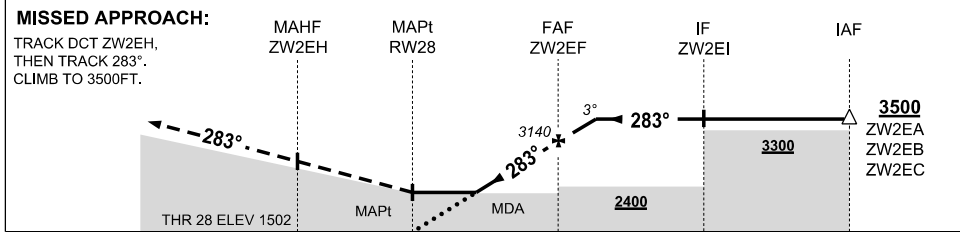
**APPENDIX 3 TO  
SUP H57/22**

**USE QNH**

**RNAV (GNSS) RWY 28  
WINDARLING, WA (YWDG)**



NM TO NEXT WPT	RW28	1.9	2	3	4	ZW2EF	1	1.1					
ALT (3° APCH PATH)		2170	2190	2510	2830	3140	3460	3500					



NM TO RW28: 3, 0, 5, 10, 15

**NOTES**

CATEGORY	A	B	C	D
LNAV	2170 (668-3.8)			NOT AUTHORISED
CIRCLING*	2170 (668-2.4)		2400(898-4.0)	
ALTERNATE	(1168-4.4)		(1398-6.0)	

- MAX IAS:  
INITIAL : 210KT
- NO CIRCLING  
N OF RWY 10/28
- CAUTION:** CHECK  
BLASTING TIMES  
WITH AD OPR

Changes: NEW PROCEDURE

WDGGN02-SUP