

**AIP SUPPLEMENT  
(SUP)****AIRAC****H56/22****Effective: 202208101600 UTC**AERONAUTICAL INFORMATION SERVICE,  
AIRSERVICES AUSTRALIA, GPO BOX 367,  
CANBERRA ACT 2601For **DISTRIBUTION** queries, contact:  
Email: [aim\\_editorial@airservicesaustralia.com](mailto:aim_editorial@airservicesaustralia.com)For **CONTENT** queries regarding this SUP, contact:Email: [fpdo.au@idscorporation.com](mailto:fpdo.au@idscorporation.com)**KARLAWINDA MINE AIRPORT (YKWA)  
NEW DAP WEST PROCEDURES****1. INTRODUCTION**

1.1 This AIP SUP introduces new DAP procedures at Karlawinda Mine (YKWA).

**2. IMPLEMENTATION**

2.1 The procedures in the appendices become effective 202208101600 UTC.

**3. WAYPOINTS**

3.1 YKWA RNAV (GNSS) RWY 01 waypoints are as follows:

<b>KW2SA</b>	235933.23S	1201119.99E	IAF Right
<b>KW2SB</b>	240208.29S	1200544.16E	IAF Centre
<b>KW2SC</b>	235811.29S	1200110.85E	IAF Left
<b>KW2SI</b>	235710.49S	1200631.62E	IF
<b>KW2SF</b>	235212.68S	1200719.02E	FAF
<b>KW2SH</b>	234426.33S	1200833.12E	MAHF
<b>RW01</b>	234725.03S	1200804.74E	MAPt

3.2 YKWA RNAV (GNSS) RWY 19 waypoints are as follows:

<b>KW2ND</b>	233553.17S	1200424.45E	IAF Right
<b>KW2NE</b>	233138.92S	1201034.82E	IAF Centre
<b>KW2NG</b>	233720.17S	1201510.88E	IAF Left
<b>KW2NI</b>	233636.76S	1200947.64E	IF
<b>KW2NF</b>	234134.59S	1200900.40E	FAF
<b>KW2NH</b>	234919.44S	1200746.54E	MAHF
<b>RWY19</b>	234620.75S	1200814.95E	MAPt

#### **4. CANCELLATION**

4.1 This SUP will be cancelled when the procedures are incorporated into AIP DAP. This is expected to be in DAP amendment 173, effective 1 December 2022.

#### **5. DISTRIBUTION**

5.1 Airservices Australia website only.

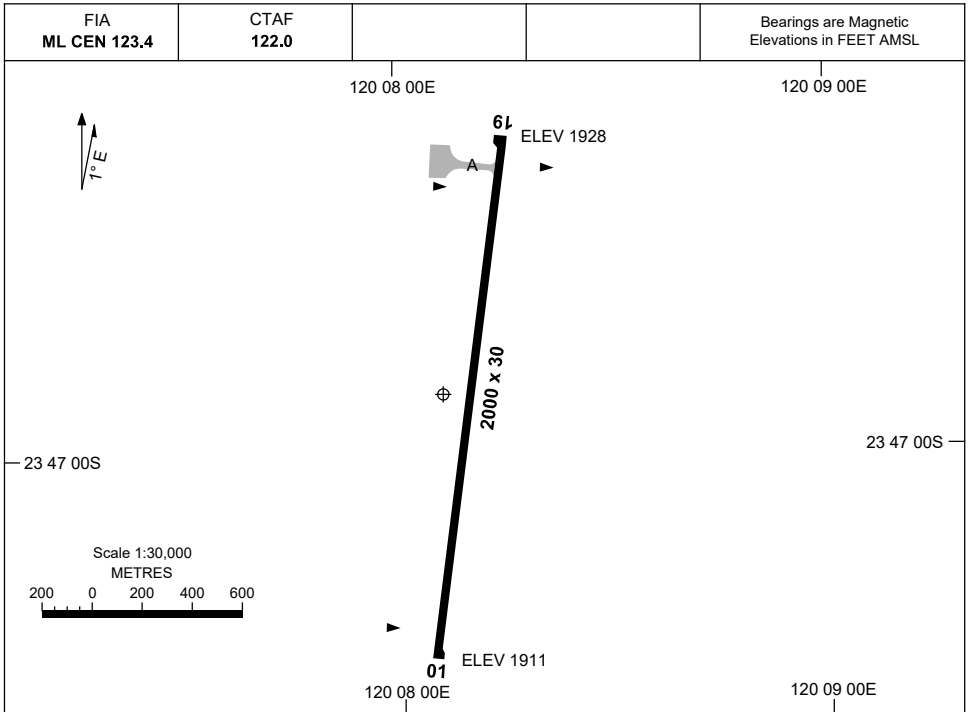
#### **Appendices**

1. Aerodrome Chart
2. RNAV (GNSS) RWY 01
3. RNAV (GNSS) RWY 19

**APPENDIX 1**  
**TO AIP SUP H56/22**

AD ELEV 1928  
 23 46 52S 120 08 06E

**AERODROME CHART**  
**KARLAWINDA MINE, WA (YKWA)**



	<b>AERODROME LIGHTING</b>
<b>RWY</b>	RL : PTBL (EMERG ONLY , 90 MIN PN)
<b>01</b> <small>007</small>	PTBL
<small>187</small> <b>19</b>	PTBL

**NOTES**

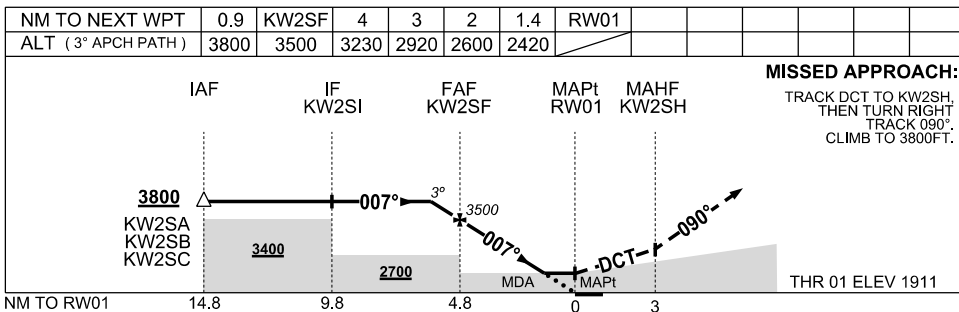
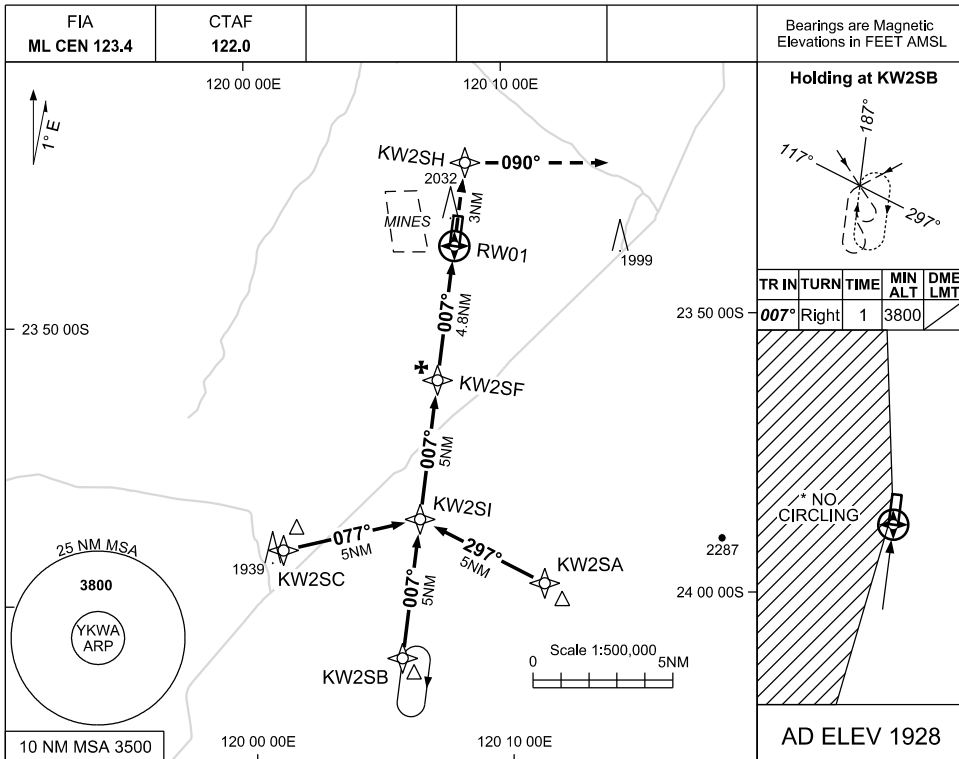
Changes: NEW CHART.

KWAAD01-SUP

**APPENDIX 2 TO  
SUP H56/22**

**USE QNH**

**RNAV (GNSS) RWY 01  
KARLAWINDA MINE, WA (YKWA)**



**NOTES**

1. MAX IAS:  
INITIAL: 210KT  
MAP TURN: 210KT
- \*2. NO CIRCLING WEST OF RWY 01/19
3. CAUTION: YNWN PROCS ADJACENT TO NW
4. CAUTION: BLASTING REFER ERSA

CATEGORY	A	B	C	D
LNAV	<b>2420 (509 - 2.9)</b>			<b>NOT AUTHORISED</b>
* CIRCLING	<b>2550 (622-2.4)</b>		<b>2690(762-4.0)</b>	
ALTERNATE	<b>(1122-4.4)</b>		<b>(1262-6.0)</b>	

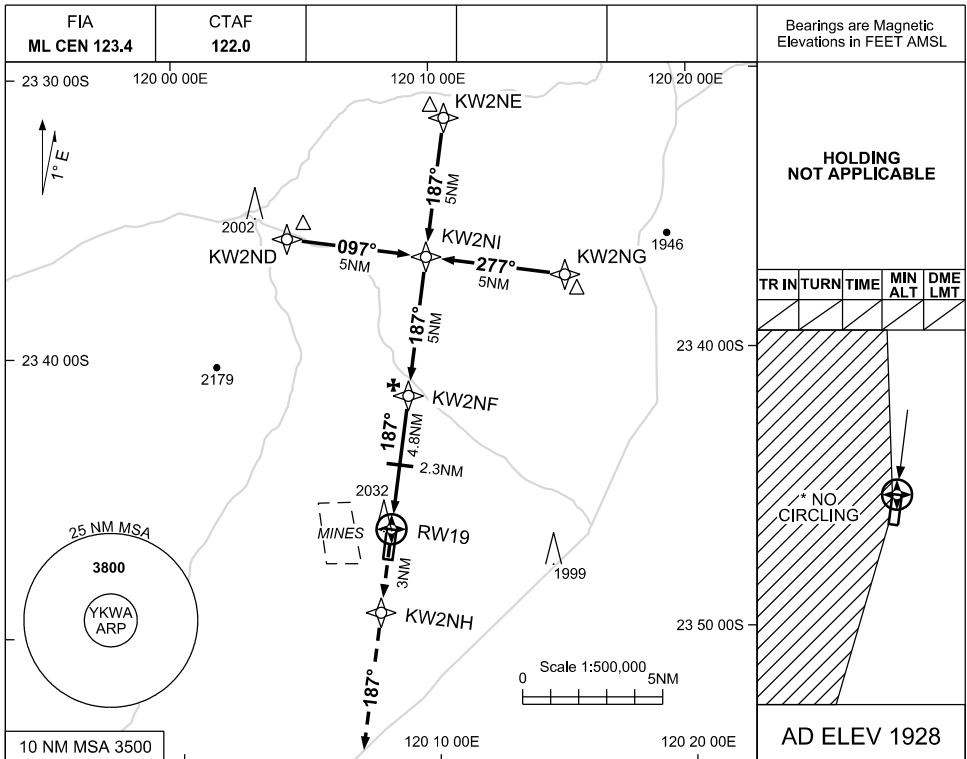
Changes: NEW PROCEDURE

KWAGN01-SUP

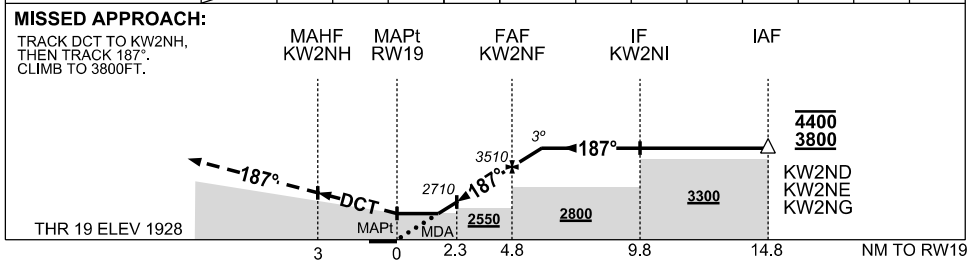
**APPENDIX 3 TO  
SUP H56/22**

**USE QNH**

**RNAV (GNSS) RWY 19  
KARLAWINDA MINE, WA (YKWA)**



NM TO NEXT WPT	RW19	1.5	2	3	4	KW2NF	0.9				
ALT (3° APCH PATH)		2470	2610	2930	3250	3510	3800				



**NOTES**

1. MAX IAS: INITIAL: 210KT
- \*2. NO CIRCLING WEST OF RWY 01/19
3. CAUTION: PROC OVERLAID BY PROCS AY YNWN. PRESCRIBED MAXIMUM ALTITUDES ENSURE SEPARATION
3. CAUTION: BLASTING REFER ERSA

CATEGORY	A	B	C	D
LNAV	2470 (542 - 3.1)			<b>NOT AUTHORISED</b>
* CIRCLING	2550 (622-2.4)		2690(762-4.0)	
ALTERNATE	(1122-4.4)		(1262-6.0)	

Changes: NEW PROCEDURE

KWAGN02-SUP